

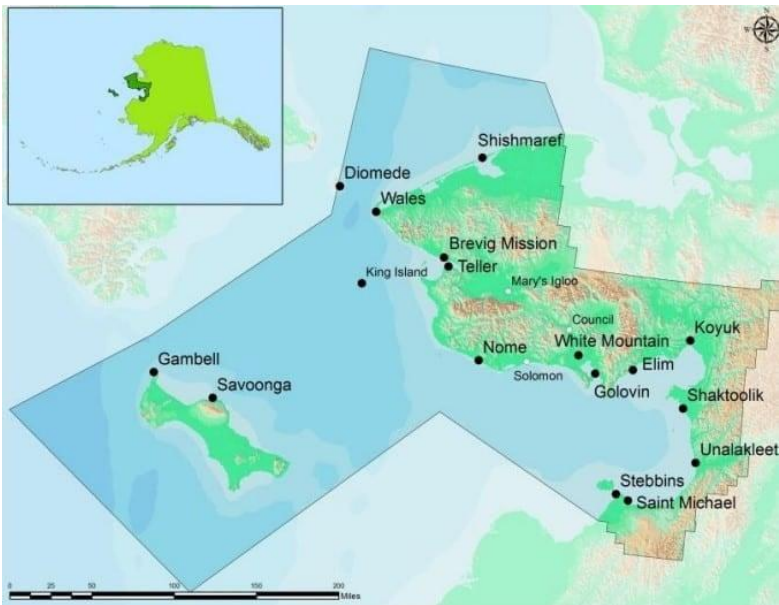
# Bering Strait School District Report



Tammy Dodd  
Superintendent, Bering Strait School District

Friday, February 27, 2026

# Our District and Who We Serve



The Bering Strait School District covers 80,000 square miles serving 15 villages on the Seward Peninsula, Norton Sound and two islands in the Bering Sea.

Our enrollment is approximately 1,800 students with over 95% of students Alaska Native Inupiaq, Yup'ik or Siberian Yup'ik

# Our Successes

- Student programs/ successes

  - 11 students qualified for the State ACADECA competition

  - 8 students participated in the Youth Leader Advocacy conference in Juneau

  - 6 schools participated in the State Ed Rising competition

- Map Growth

  - 14 of our 15 schools have had growth above the standard deviation over the last three years

  - FY22 district average reading percentile was at 11th percent. FY25 district average reading percentile was at the 25th percent.

| School   | Fall 23 | Winter 23 | Spring 24 | Fall 24 | Winter 24 | Spring 25 | Fall 25 | Winter 25 | Total Percentile Growth |
|----------|---------|-----------|-----------|---------|-----------|-----------|---------|-----------|-------------------------|
| School A | 32      | 31        | 36        | 38      | 36        | 34        | 43      | 50        | 12                      |
| School B | 31      | 31        | 34        | 36      | 33        | 30        | 35      | 35        | 0                       |
| School C | 33      | 31        | 38        | 35      | 32        | 35        | 40      | 48        | 20                      |
| School D | 14      | 15        | 24        | 22      | 25        | 27        | 27      | 25        | 13                      |
| School E | 18      | 21        | 21        | 27      | 19        | 23        | 29      | 28        | 19                      |
| School F | 14      | 13        | 22        | 21      | 16        | 20        | 20      | 21        | 10                      |
| School G | 9       | 10        | 18        | 19      | 14        | 18        | 23      | 28        | 16                      |
| School H | 11      | 10        | 17        | 15      | 14        | 19        | 21      | 15        | 7                       |
| School I | 11      | 6         | 16        | 15      | 11        | 20        | 22      | 21        | 14                      |
| School J | 9       | 4         | 13        | 15      | 11        | 19        | 14      | 15        | 4                       |
| School K | 8       | 9         | 14        | 14      | 9         | 14        | 18      | 10        | 5                       |
| Schook L | 7       | 3         | 11        | 10      | 8         | 16        | 16      | 18        | 16                      |
| School M | 4       | 2         | 10        | 6       | 5         | 13        | 12      | 13        | 10                      |
| School N | 11      | 4         | 16        | 6       | 4         | 14        | 8       | 23        | 16                      |
| School O | 2       | 1         | 9         | 19      | 1         | 10        | 6       | 9         | 5                       |

# Challenges Facing Our District

- Recruitment and retention
  - 18 J1 teachers
  - 68 H1B teachers
    - 86 total international teachers
- Major maintenance
  - FY25 began with a total loss of one of our schools due to a fire
  - Tank Farm replacements





# Thank you! Questions?

Tammy Dodd  
Superintendent,  
Bering Strait School District

