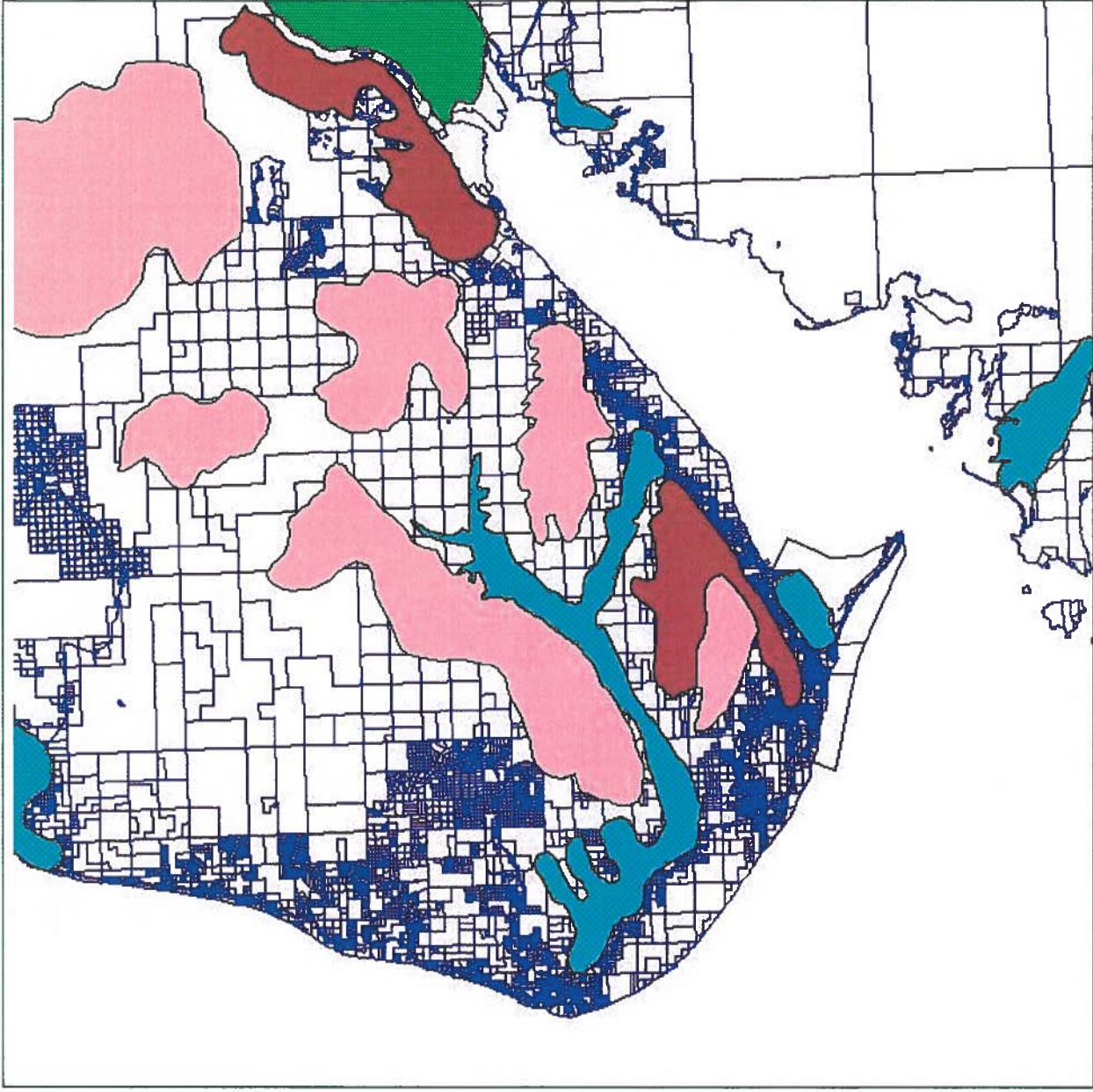


Moose Habitat







- calving
- rutting
- rutting, calving
- winter
- winter, calving
- winter, rutting
- winter, rutting, calving
- Kenai Peninsula Borough Tax Parcels



**Priority Moose Habitat
Southern Kenai Peninsula**



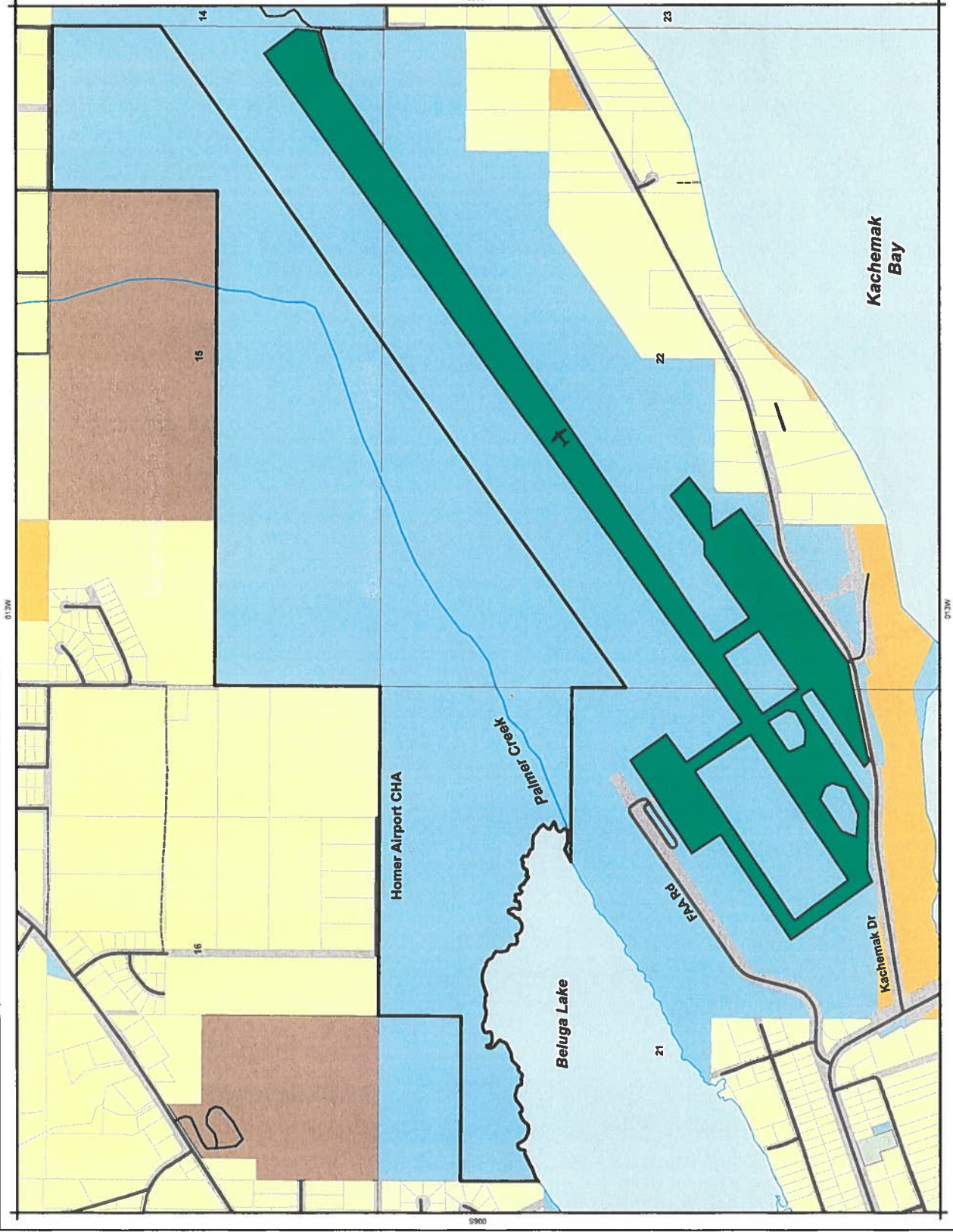
Homer Airport Critical Habitat Area

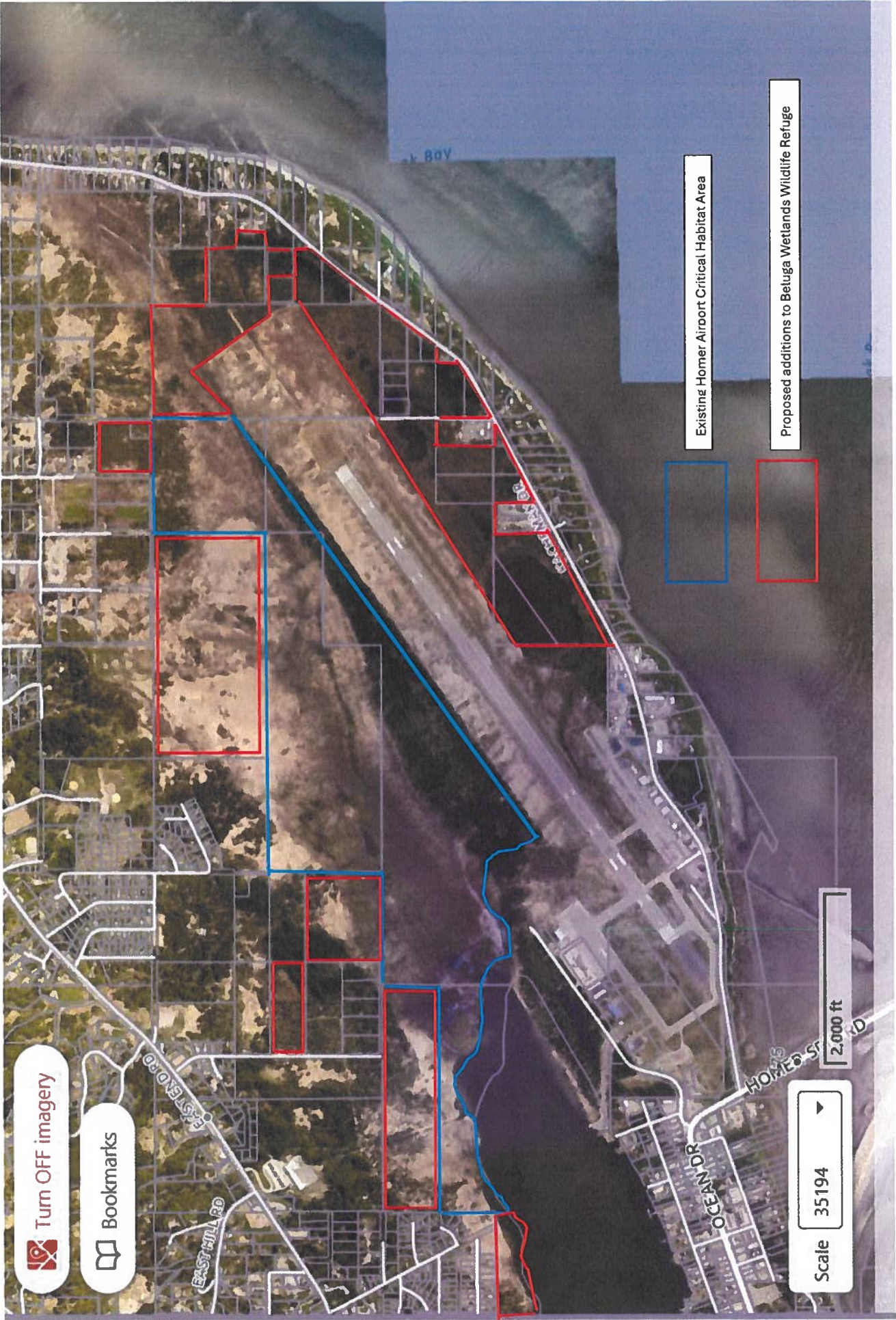
-  CHA Boundary
- State Lands**
-  BLM
- Other Lands**
-  State
-  Private
-  Municipal
-  Borough



Map Produced by Alaska Department
of Fish & Game, Sport Fish Division
Date: 07/22/2010

Location Map





Turn OFF imagery

Bookmarks









Scale 35194

2,000 ft

Existing Homer Airport Critical Habitat Area

Proposed additions to Betuga Wetlands Wildlife Refuge

Anchor River / Fritz Creek Critical Habitat Area

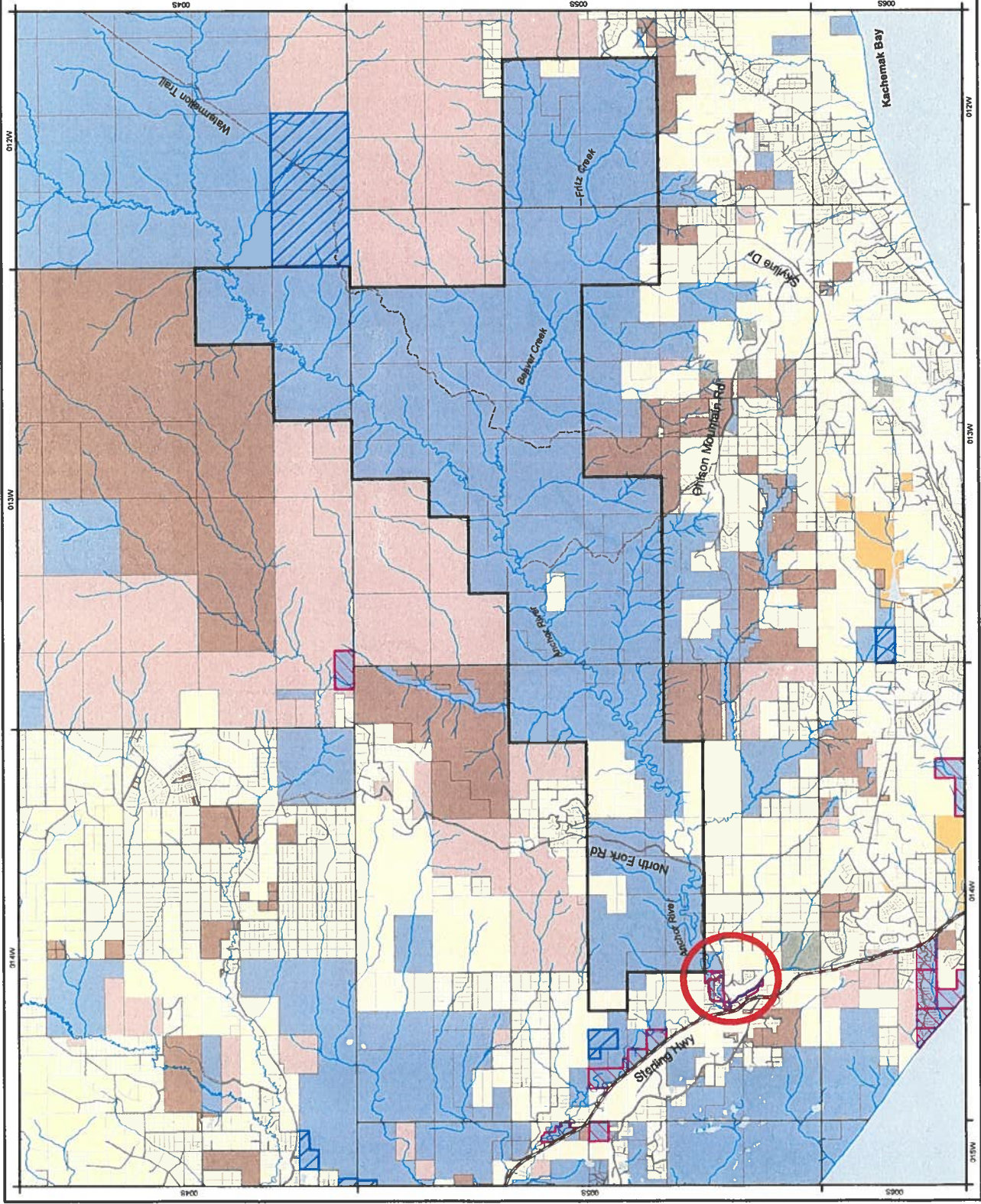
-  CHA Boundary
-  State
-  Native
-  Municipal
-  Borough
-  Private
-  Municipal Entitlement
-  Management Agreement



0 1 2 Miles



Map Produced by Alaska Department of Fish & Game Division of Sport Fish
Date: 10/4/2021





Solid red: State conservation lands.
Dashed red: State DNR parcel



Anchorage Coastal Wildlife Refuge



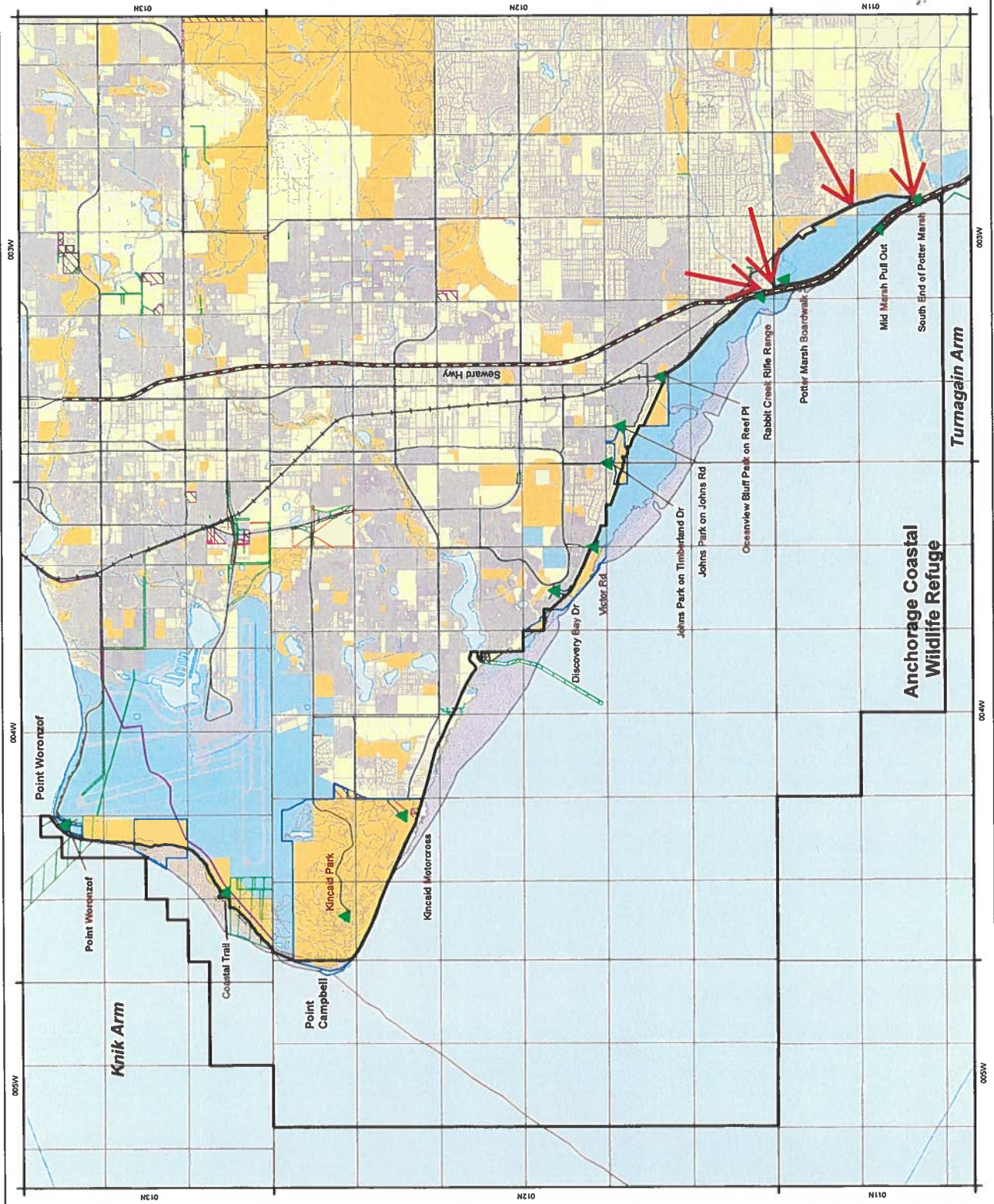
- ▲ Access Points
- Permit/Lease
- ▨ Permit/Lease
- ▭ Easement

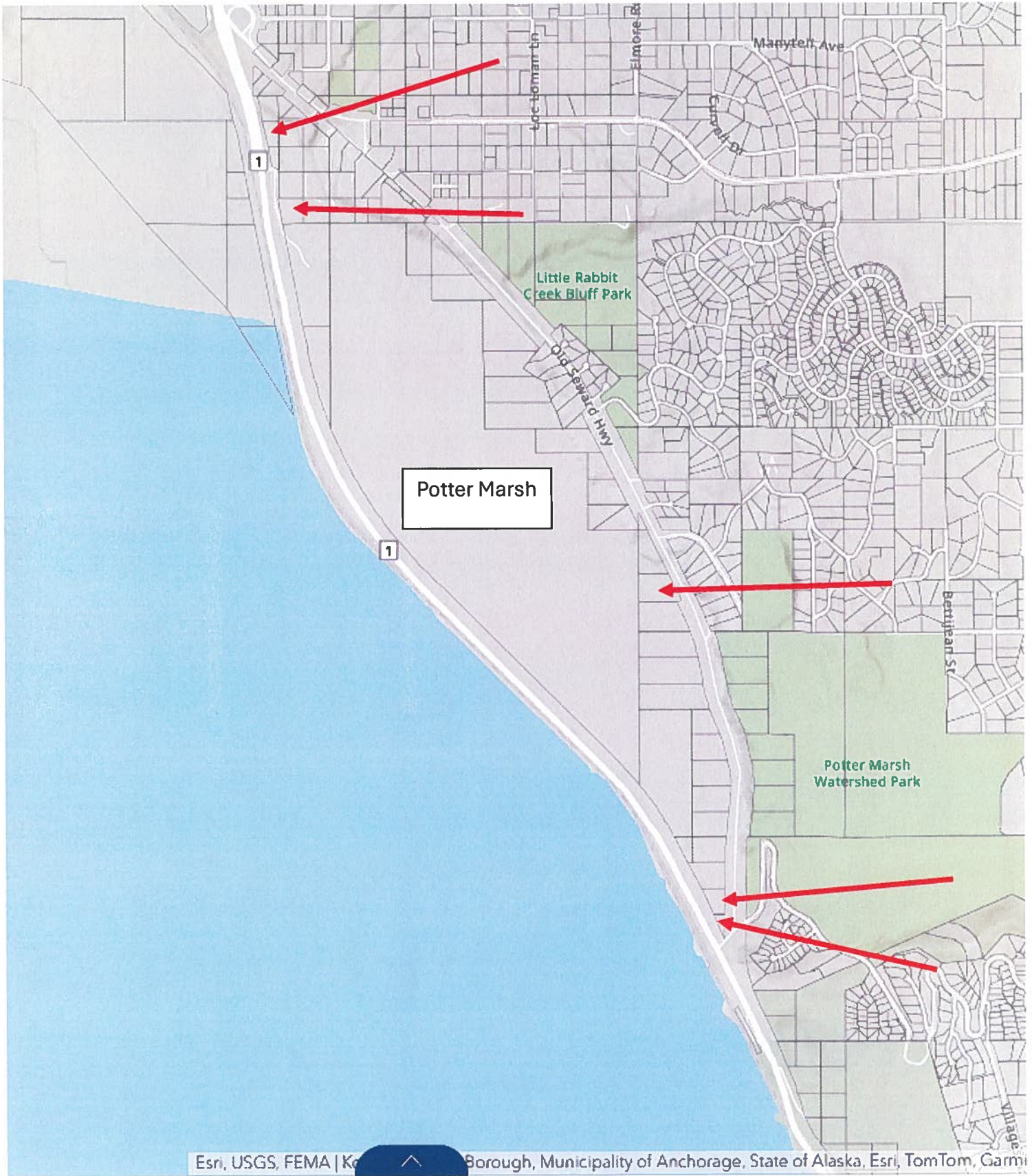
- State
- MHT
- LSH
- MOAParks
- Municipal
- Private
- Native

State parcels to be added










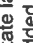


Map Produced by Alaska Department of Fish & Game Sport Fish Division
Date: 4/14/2011



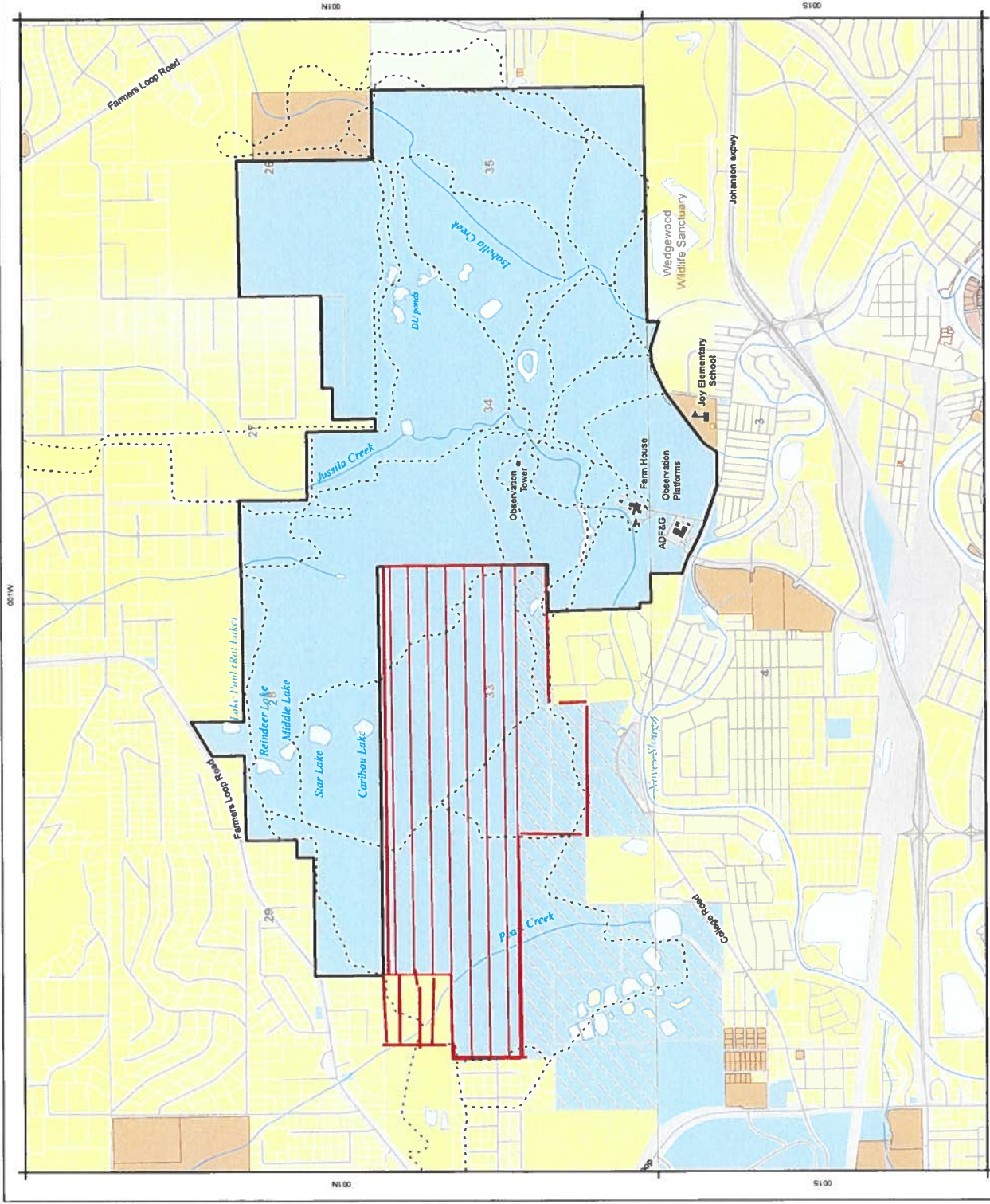


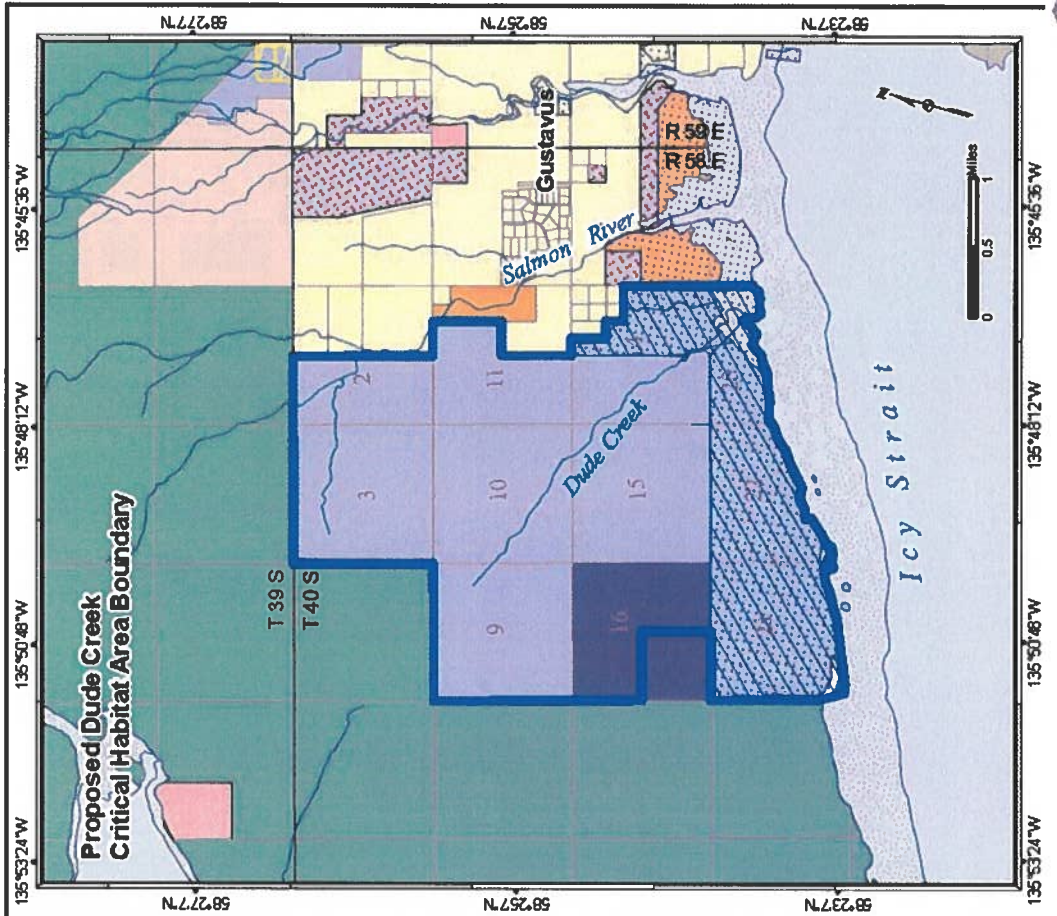
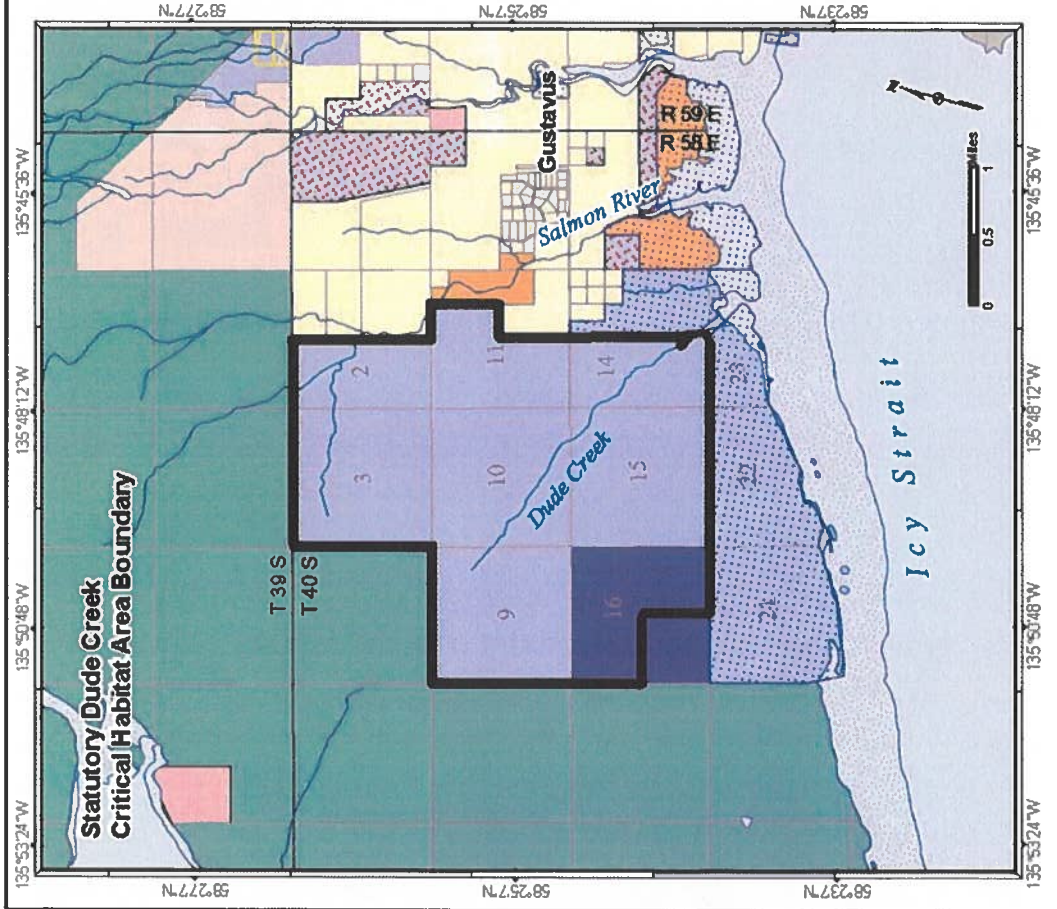
Creamer's Field Migratory Waterfowl Refuge

-  Creamer's Field Boundary
 - Federal Lands**
 -  BLM
 - State Lands**
 -  State of Alaska
 -  University of Alaska
 -  ADF&G Management Rights
 - Other Lands**
 -  Private
 -  City of Fairbanks
 -  Fairbanks North Star Borough
 - Trail**
 -  Trail
 -  State land to be added
- Prepared by:
State of Alaska
Dept. of Fish and Game
Date: 11/20/2020



0 0.25 0.5
Miles





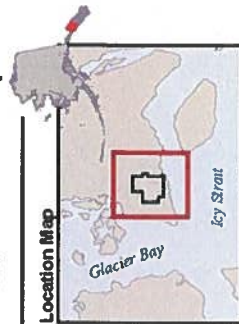
Dude Creek Critical Habitat Area

- Federal Lands**
- National Park Service
 - USFWS
- State Lands**
- State
 - Mental Health
 - School Trust
 - Management Rights

- Private Lands**
- Native
 - Native Allotment
 - The Nature Conservancy

- Statutory CHA Boundary
- Proposed Dude Creek CHA Boundary
- Affected Lands

State of Alaska
Department of Fish and Game
8/26/2014



McNeil River State Game Refuge and Sanctuary

LAND STATUS Legend

- McNeil River SGR and SGS Boundary (including the island but exclusive of marine water and submerged land)
- National Park and Preserve Boundaries
- Public Easement (Fish Ladder ROW)
- RST 375 Point River Trail
- Cabin
- Wildlife Observation Areas
- Trails
- Mining Claim
- Land Status**
- State Lands
- State
- DNR Kamishak Special Use Area
- Cook Inlet Aquaculture Assoc. Lease Area
- Municipal Lands**
- Municipal Entitlement
- Federal Lands**
- Kammai National Park and Preserve
- BLM
- Private Lands**
- Bristol Bay Native Corporation



Kamishak Bay

Nordylke Island and its tidelands are excluded from McNeil River State Game Refuge.



The State of Alaska has management jurisdiction on all state lands within the boundary of the Kammai National Park and Preserve

Kamishak Lands - proposed brown bear hunt closure

Refuge - proposed brown bear hunt closure

Sanctuary - No hunting



Map produced by State of Alaska Dept. of Fish and Game, Div. of Sport Fish June 2008