

# Connecting Talent to Opportunity: The RootEd AK Career Guide Pilot Program

Bridging the gap between Alaska's high school seniors and the skilled workforce.



# The Alaska Paradox: Importing Labor, Exporting Wealth

A dark blue silhouette of the state of Alaska is shown on the left side of the slide. A callout box with a blue border and white background is positioned over the central part of the map. The callout box contains the number '34,000' in large white font, followed by the text 'decline in prime working age population since 2013' in smaller white font. Several orange hexagonal icons are scattered around the map and callout box.

**34,000**

decline in prime working  
age population since 2013

**23%**



of Alaska workers are non-residents.

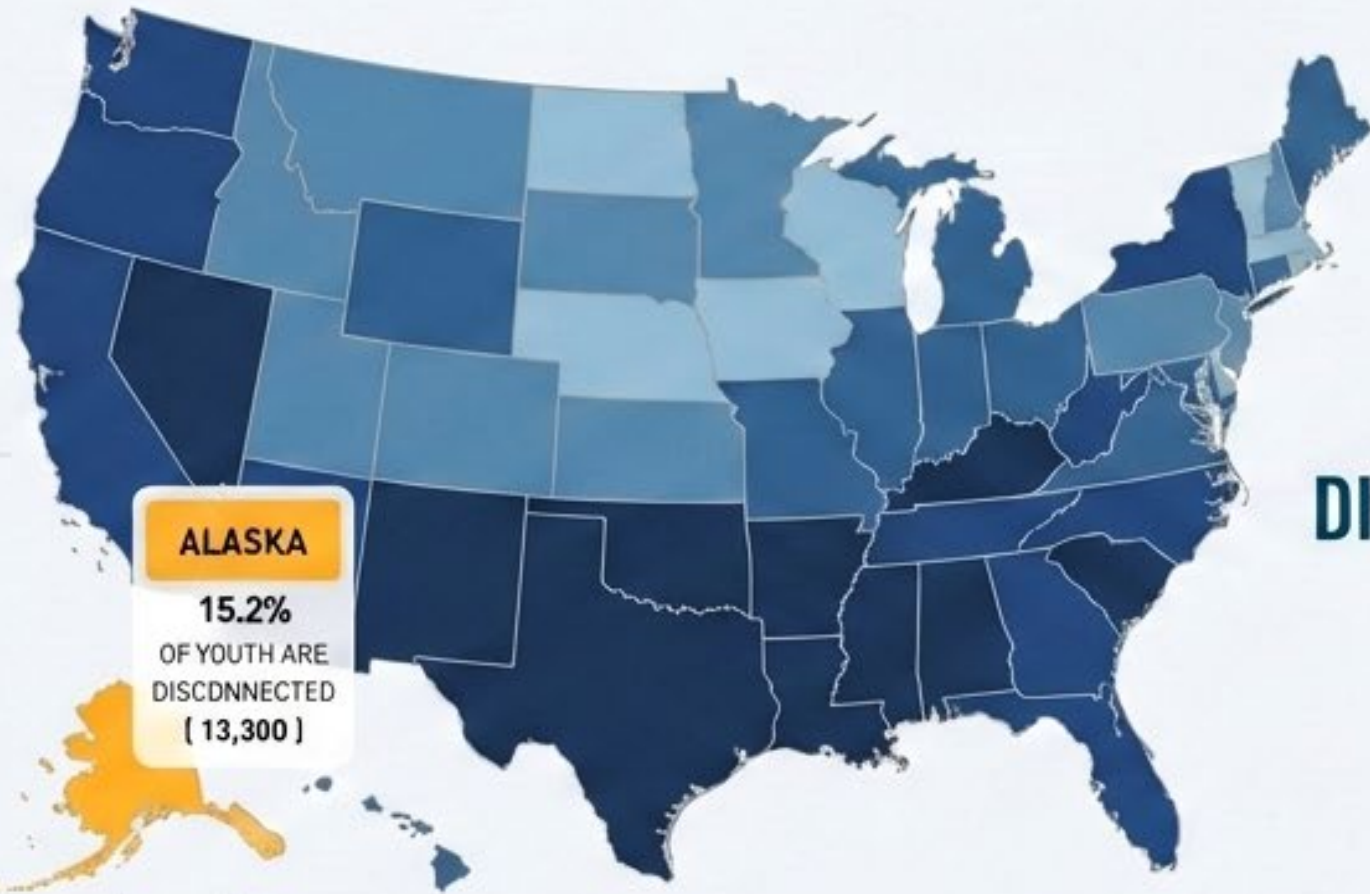
**\$3.8 Billion**



in wages leaves the state annually  
(17% of every dollar earned).

# THE UNTAPPED POTENTIAL OF ALASKA'S YOUTH

## REALITY



## THE DISCONNECT

## AMBITION

# 89%

of high school seniors  
explicitly state they  
very much want to get  
more education after  
high school.

# Navigating the Barriers to Entry

## PERCEPTION



Overcoming the narrative that trades are a “backup plan” rather than high-skill, high-wage careers.

## ACCESS



Geographic isolation, lack of transportation to job sites, and training costs.




## SYSTEM ALIGNMENT



The disconnect between school schedules and employer training needs.

# THE SOLUTION: DEDICATED CAREER ADVISORS



-  **RURAL FOCUS**  
Specifically designed for **rural high schools** (currently serving 8 rural school districts in Alaska).
-  **AUGMENTATION, NOT REPLACEMENT**  
Advisors work alongside **school counselors** to ensure every senior has a concrete plan.
-  **HOLISTIC SUPPORT**  
Advisors handle the “**logistics of life**”—housing, transportation, and interview prep—solving the **actual** points of failure for rural students.

“ rootEd Advisors are people who help people plug into opportunities.”

# The Rooted AK Focus: From Conversation to Completion

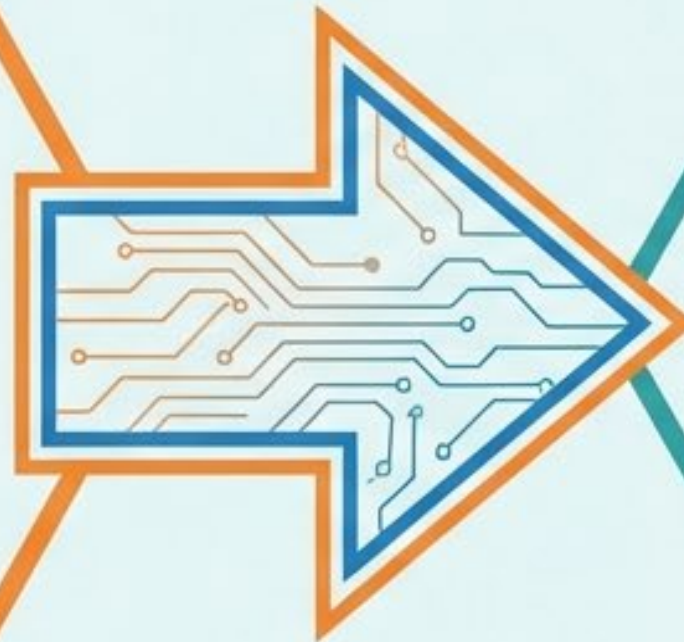


# PILOT EXPANSION: CURRENT & FUTURE REACH



## CURRENT PILOT DISTRICTS

- Nenana City
- Galena City
- Dillingham City
- Bristol Bay
- Southwest Region
- Lake and Peninsula



## EXPANSION DISTRICTS

- Alaska Gateway
- Delta/Greely
- Copper River
- Southeast Alaska Districts:
  - Annette Island
  - Chatham
  - Haines
- Hoonah
- Hydaburg
- Juneau
- Kake
- Ketchikan Gateway
- Klawock
- Pelican
- Petersburg
- Sitka
- Skagway
- Wrangell
- Yakutat



# Pilot: CTE Intensives

**Blend of collaborative 40-hour trainings for students across the region**

**Goal:** Overlapping career guidance to help students build skills, find out what they like to do, and then support them in taking the steps to launch.

**Southeast Education to Career Consortium** forming in partnership with SE AK districts, SHI, Tlingit and Haida, Southeast Trades Unions, UAS, and Many others.

Newly forming **Alaska Regional Career and Technical Interior Consortium (ARCTIC)** with Delta Greeley School District, Copper River School District, and Alaska Gateway School District.



# The 10-Year Vision for Alaska



**If we succeed, what will Alaska look like?**

A self-sustaining local workforce, thriving rural communities,  
and students who feel seen, supported, and skilled.

**CALL TO ACTION: Support the Summer 2026 Pilot Launch.**