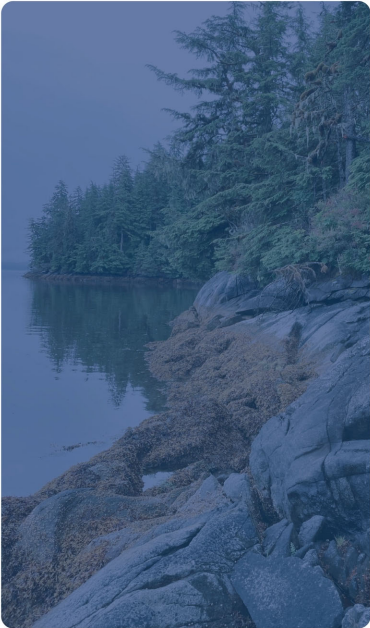


# Senate HSS Committee

February 24, 2026

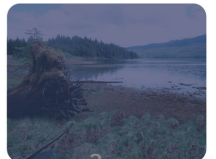
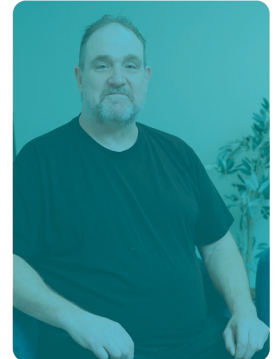
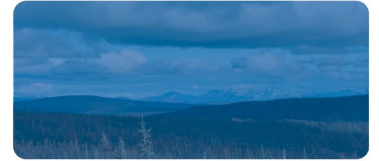


Trust  
Alaska Mental Health  
Trust Authority

# Trust Beneficiaries

Trust beneficiaries include Alaskans who experience:

- Mental illnesses
- Intellectual and/or developmental disabilities
- Alzheimer's disease and related dementia
- Traumatic brain injuries
- Substance use disorders





# About the Trust

- Established in 1994 as a public corporation of the state within the Department of Revenue.
- Governed by a Board of Trustees; which employs a CEO and staff.
- Administers the Mental Health Trust, a perpetual trust.
- Works to improve lives of current and future Trust beneficiaries through ensuring an integrated, comprehensive mental health program in Alaska; approves a budget allocating Trust funds each fiscal year.
- Protects and enhances the value of Trust lands while generating revenues from them over time. The Trust Land Office is a special unit within DNR that is contracted to manage Trust lands and natural resources.
- Entirely self-funded.



# Alaska Mental Health Trust Authority

## *Frequently Asked Questions*

- Is the Trust supposed to fund all public mental health and disability services in Alaska?
- Why doesn't the Trust spend more?
- Why is the Trust asking for general funds (GF/MH)?
- Is the Trust improving mental health in Alaska?

# The Trust Strategic Plan, 2025

## Trust Priorities

The Trust's four Priorities describe where the Trust directs its investments to strengthen Alaska's system of care. Each Priority helps align the Trust's grantmaking and partnerships to improve the lives of beneficiaries and the systems they rely on.

- Prevention & Early Intervention
- Crisis Response
- Treatment & Recovery
- Ongoing Support and Wellbeing

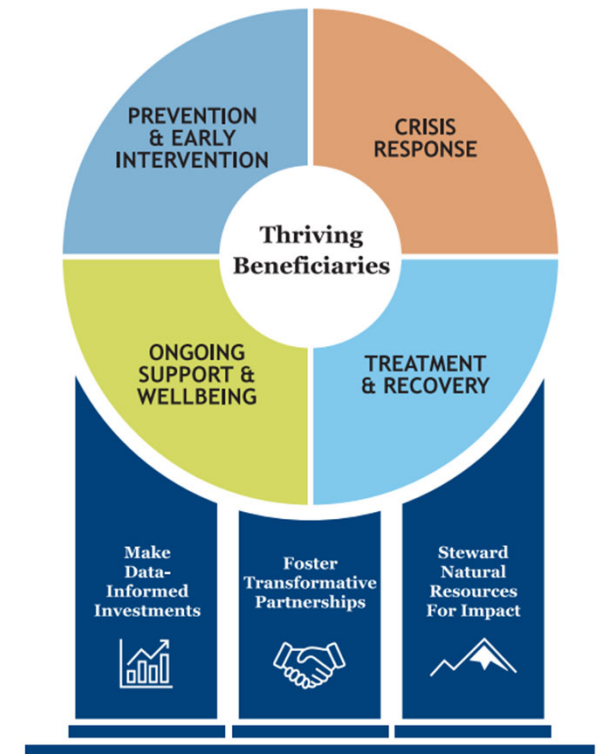
## Trust Core Commitments

The Trust's three Core Commitments define how the Trust fulfills its mission.

1. Make Data-Informed Investments
2. Foster Transformative Partnerships
3. Steward Natural Resources for Impact

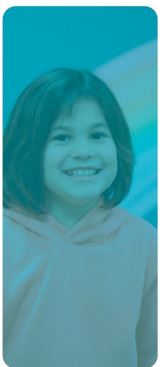
### Priorities

Where the Trust directs its focus



### Core Commitments

How the Trust fulfills its mission

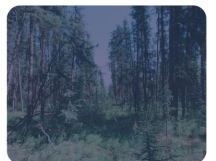
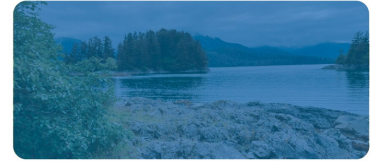


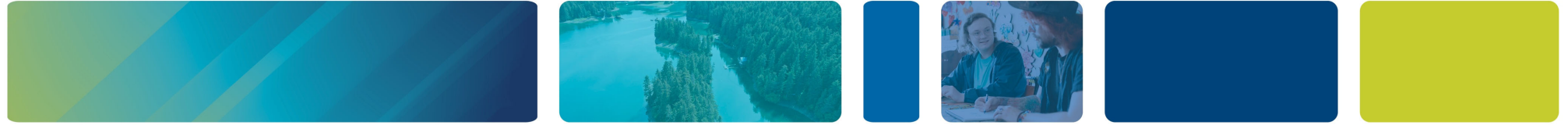
# Trust Mission

The Alaska Mental Health Trust Authority and the Trust Land Office work together to improve the lives of Trust beneficiaries by strengthening Alaska's system of care, prudently managing Trust assets, and driving lasting, positive change across the state.

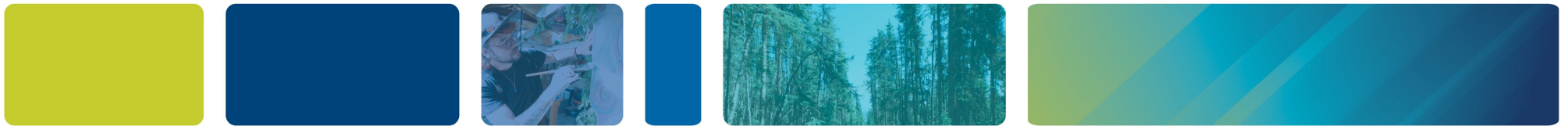
# Trust Vision

A future where every Alaskan supported by the Trust has care, connection, and the opportunity to thrive.

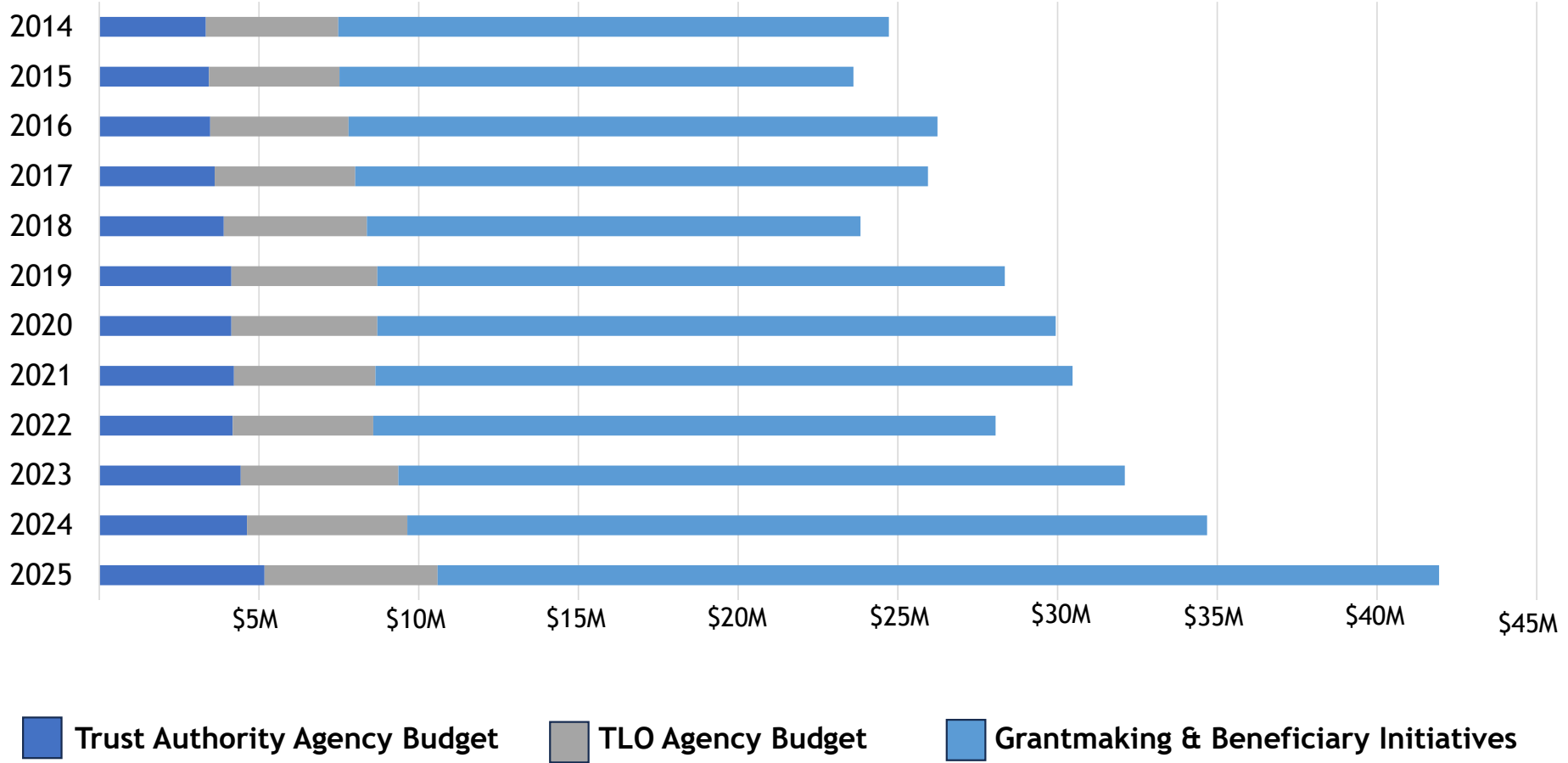




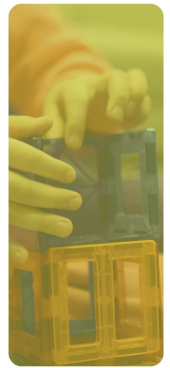
# Trust Grantmaking



# Trustee Approved Spending



\*Effective FY25, the value of in-kind contributions through below market leases on Trust lands are reflected in Grantmaking and Beneficiary Initiatives. In FY25, those leases were valued at \$1,015,171.



# Types of Trust Grants Investments

**MHTAAR Grants:** Grants to State Agencies

**Trust Authority Grantmaking:** Trust funds awarded directly to nonprofits, local governments, Tribal organizations, service providers and other beneficiary-serving partners.

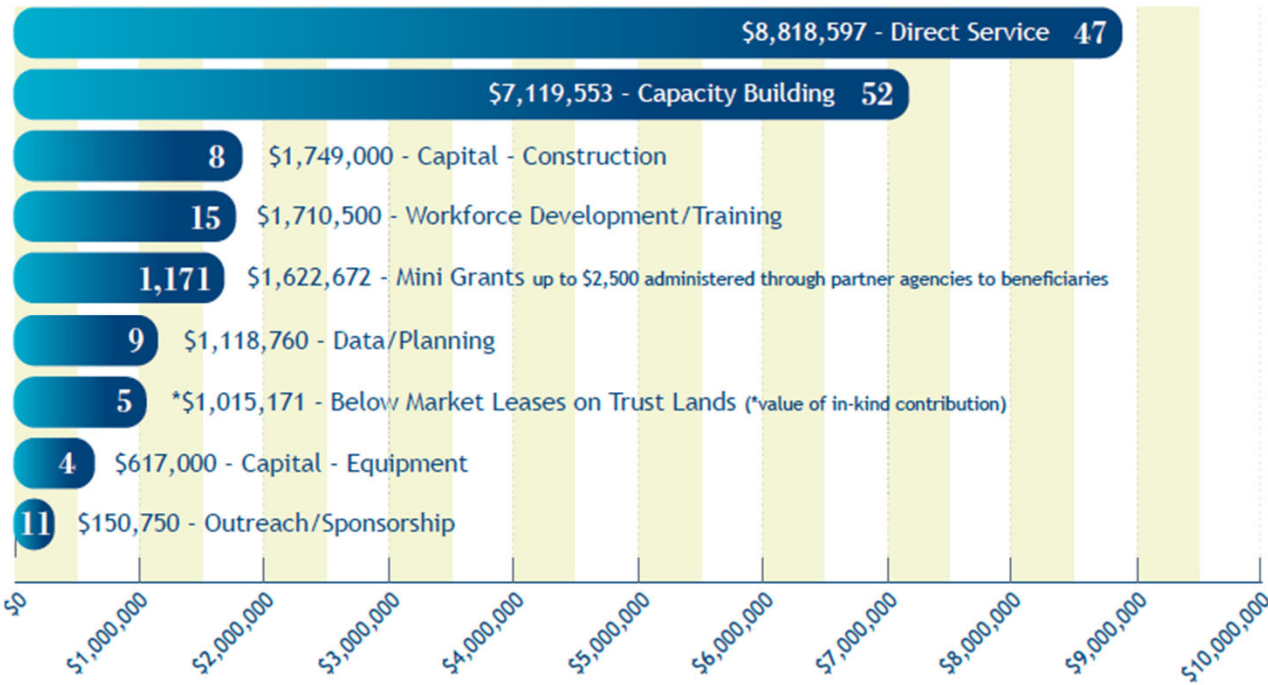
- *Innovative Solutions/Pilots*
- *Capacity Building*
- *Equipment*
- *Capital - Construction*



# Trust Grant Impacts, FY25

(data represents both MHTAAR and Grants directly to partner agencies)

## 2025 Grants



**201 trainings** for beneficiary serving professionals

were offered through Trust-supported programs within the UAA College of Health.



**5,494 individuals** were trained

(representing 103 communities)

**4,912**



**families** that have received early intervention, education, support, or services through Trust supported programs



**6,074 individuals**

received homelessness prevention, emergency shelter, rapid rehousing or related services through the Trust-supported Basic Housing Assistance Program (BHAP) administered by the Alaska Housing Finance Corporation.

**9,500**



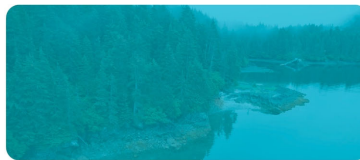
**mobile crisis team (MCT) responses**

to individuals in a behavioral health crisis. These teams, operating in Fairbanks, Mat-Su, Anchorage, Juneau, and Ketchikan, were able to resolve 84% of crises in the community.

**1,957**



**individuals** served through Trust-funded peer led agencies



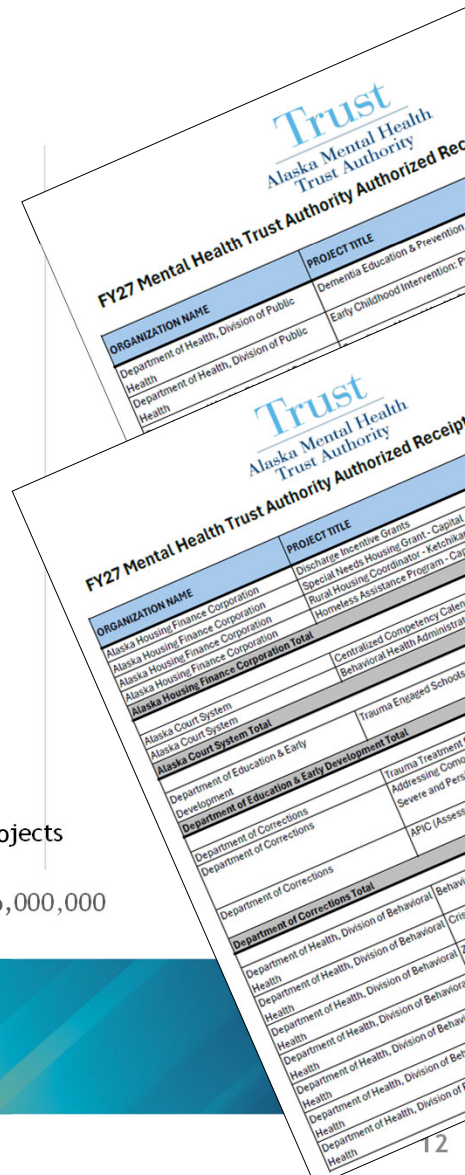
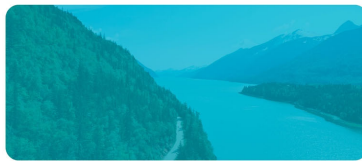
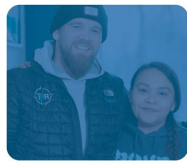
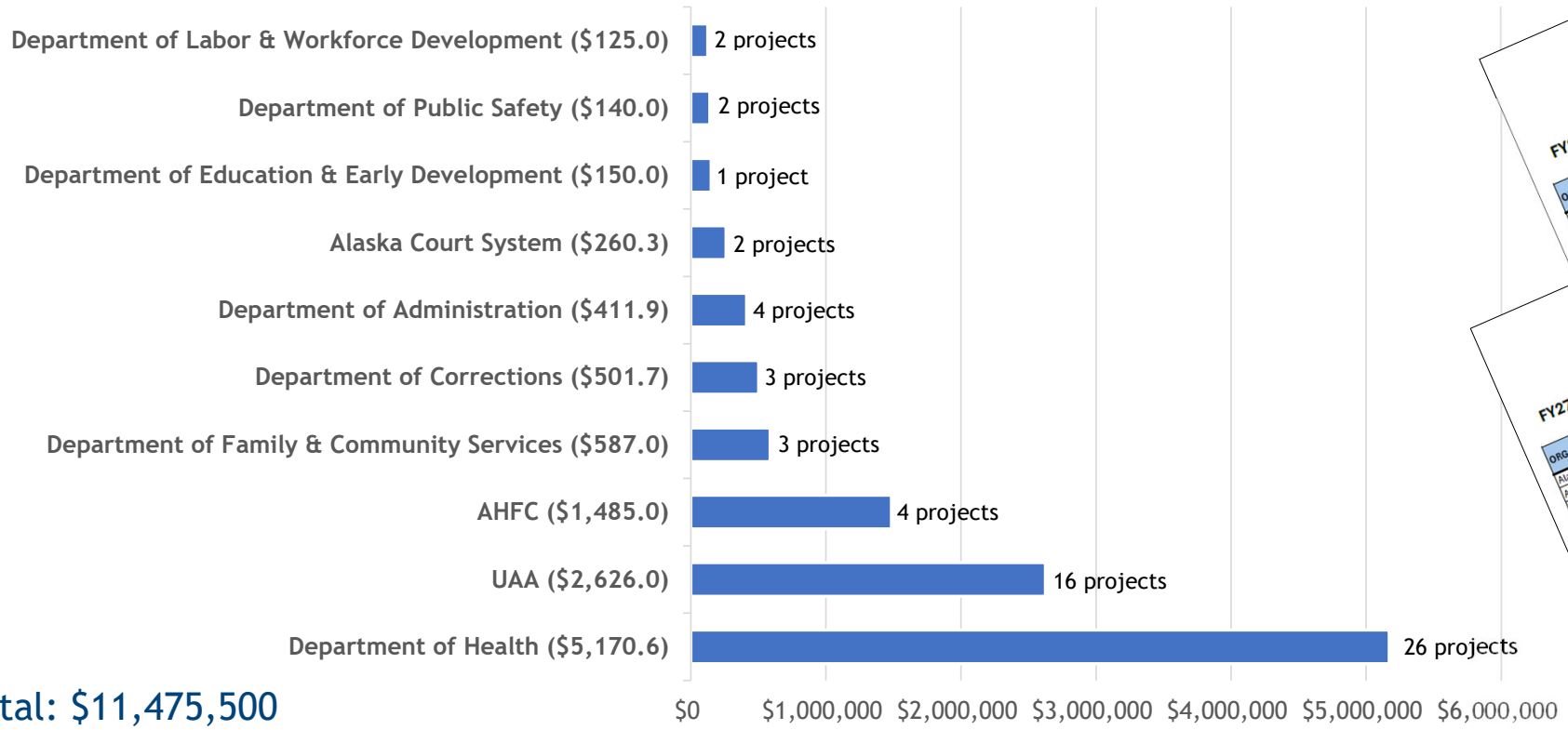


# Trust MHTAAR Grants to State Agencies

- Approved by the board of trustees
- Administered through the State budget process
- Developed in partnership with state agency leadership
- Enhance the capacity of SOA partners to advance system change initiatives
- MHTAAR projects typically developed with anticipated timeline
- Trust MHTAAR projects range in longevity, ranging from new in FY27 to 20+years

**\$260M+**  
in MHTAAR grants  
have been  
awarded to State  
agencies since  
inception.

# MHTAAR Grants, FY27





# Trust Authority Grantmaking

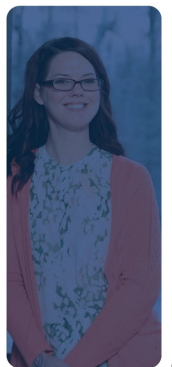
The Trust can award grants directly to beneficiary-serving partners, such as nonprofits, providers, local governments, and Tribal entities.

The Trust  
awarded  
**1,171** Mini  
Grants in  
FY25

- **Partnership Grants:** awarded for a specific purpose or need that is consistent with the Trust's mission and priorities
- **System Level Grants:** support positive changes to the overall system of care that impacts beneficiaries; much of the Trust's Crisis Now work is supported through these grants
- **Mini Grants:** awarded through a partner agency, these grants for individuals (up to \$2,500) can be used for a range of equipment, supplies and services to improve quality of life, and increase independent functioning
- **Below Market Leases:** to organizations serving Trust beneficiaries with facilities on Trust lands

# FY25 Trust Authority Grant Highlights

- Set Free Alaska, Capital support for a therapeutic campus expansion project in the Mat-Su Valley, **\$250,000**
- Southcentral Foundation, Traumatic and Acquired Brain Injury (TABI) screening, assessment, and treatment project equipping staff at ANMC/SCF to develop and implement a comprehensive system of brain injury care, **\$500,000 in FY25 (\$1.3M over 4 years)**
- Volunteers of America, Alaska, Organizational support for the first detox and withdrawal management facility for adolescents in Alaska, **\$325,000**
- A2P2 Help Me Grow, supported a centralized intake and referral system for pediatric behavioral treatment coordination, serves 20 boroughs, **\$150,000**
- Residential Youth Care, Inc. Capital support for the renovation of the SeaLevel Community Youth Center in Ketchikan, which will offer services including behavioral health, **\$400,000**
- The Tundra Women's Coalition, support to provide transitional housing to at-risk youth ages 18-24 in Bethel, **\$50,000**
- Tanana Chiefs Conference, Below Market lease for TCC's adult behavioral health treatment facility, **FY25 in-kind grant value: \$287,088**



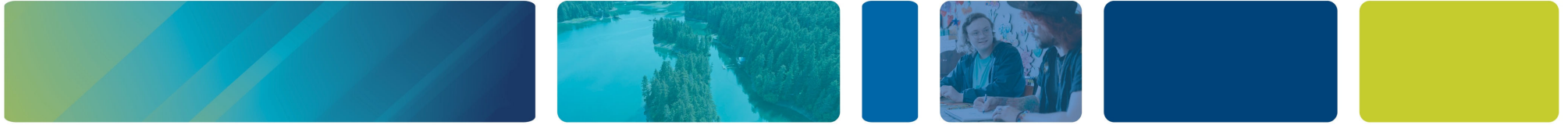


# Other Work of the Trust

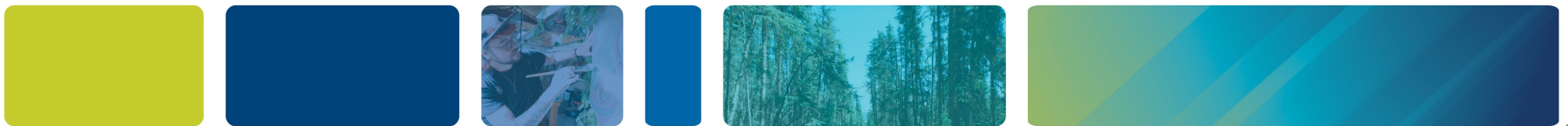
In addition to grantmaking, the Trust also engages in:

- Leadership in implementing system change initiatives
- Planning and evaluation
- Technical assistance and grantwriting support for partners
  - *Next free grantwriting workshop: April 1-2, 2026*
- Beneficiary advocacy/education
- De-stigmatization of beneficiary conditions

Trust investment  
in grantwriting  
resources for  
partners  
generated  
**\$45M**  
in new grant  
funding for  
Alaska from FY23  
to FY25



# Implementing a Behavioral Health Crisis System of Care (2018-2026)

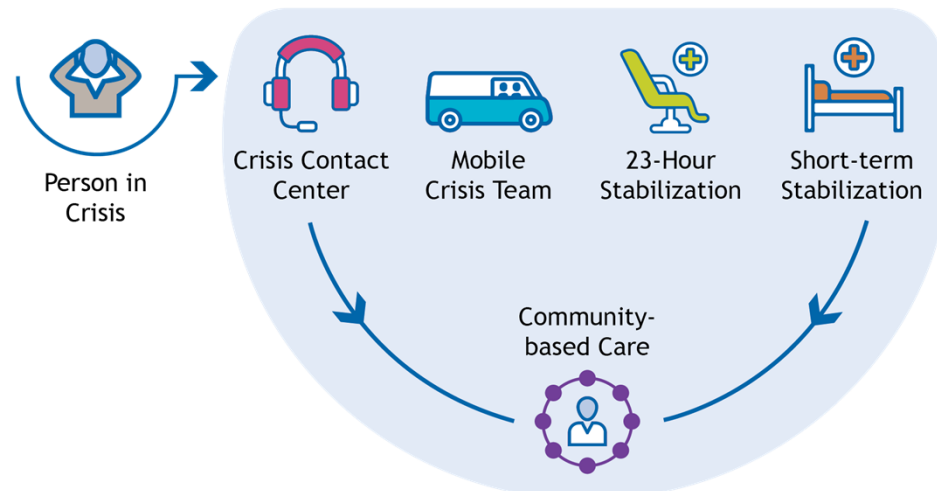


# GOAL: Design and implement a behavioral health crisis response system analogous to the physical health system

## Physical Health Emergency



## Behavioral Health Emergency



# Crisis Now Community Implementation

## 2025 Statewide Impact

### 5 Crisis stabilization planning projects supported:

- Southcentral Foundation: anticipated launch in 2026
- Providence Crisis Stabilization: anticipated launch in 2026
- Maniilaq Association: anticipated launch in 2027
- Alaska Behavioral Health: anticipated launch TBD
- Unalaska: anticipated launch TBD

### MCT Responses and Percent Resolved in Community

|                                   |       |     |
|-----------------------------------|-------|-----|
| Anchorage                         | 6,277 | 86% |
| Fairbanks                         | 1,319 | 98% |
| Juneau (Jan-Aug '25)              | 210   | 82% |
| Kenai Peninsula (started Dec '25) | 35    | 80% |
| Mat-Su (2024)                     | 506   | 80% |

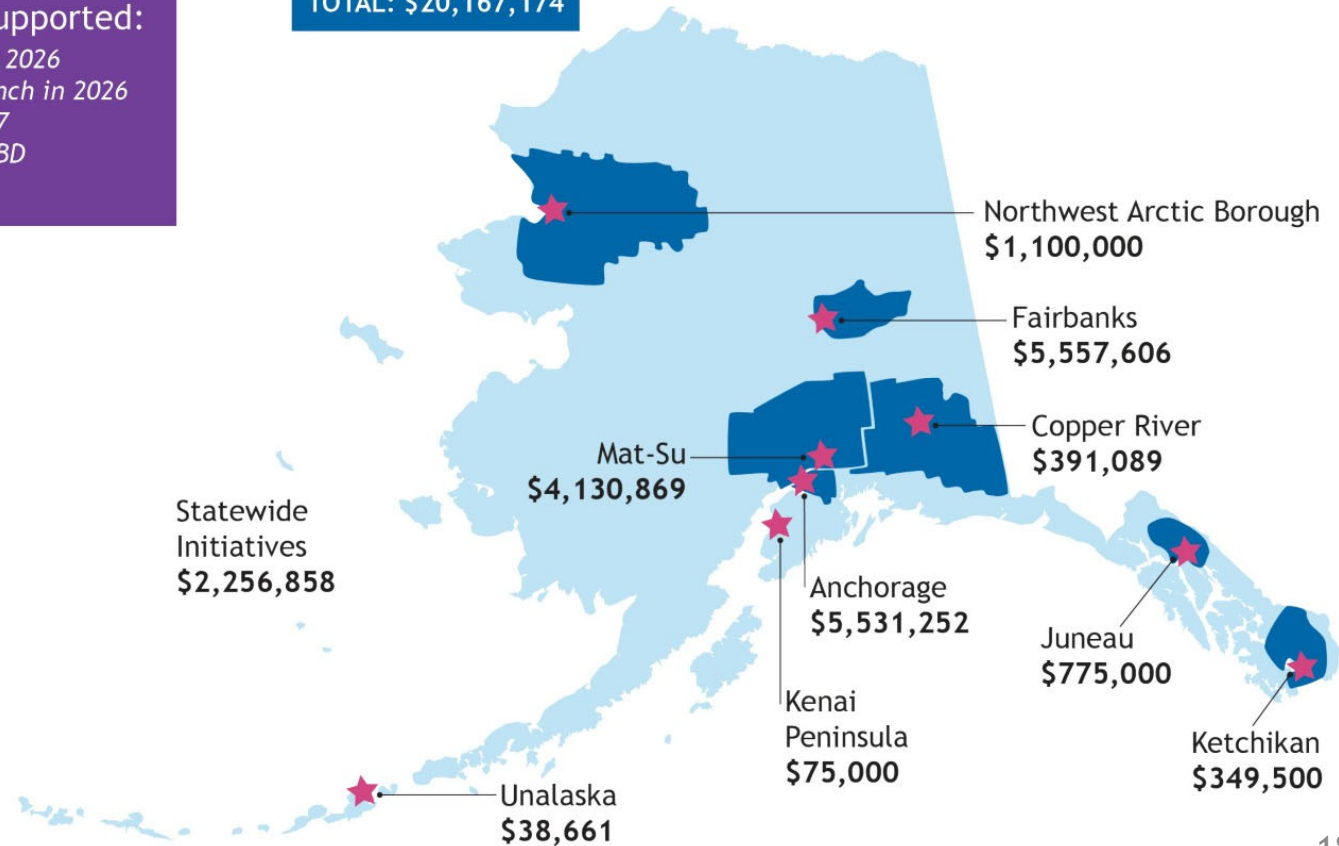
### MIH Responses

|                             |       |
|-----------------------------|-------|
| Juneau (Jan-Aug '25)        | 1,355 |
| Ketchikan (Jun '24-Jul '25) | 1,000 |

**47,809** Calls answered by Alaska's Crisis Call Center

## Investment by Region, Calendar Years 2021–2025

TOTAL: \$20,167,174



# Community Adaptations

Key:  
 Blue text = operational  
 Black- in process

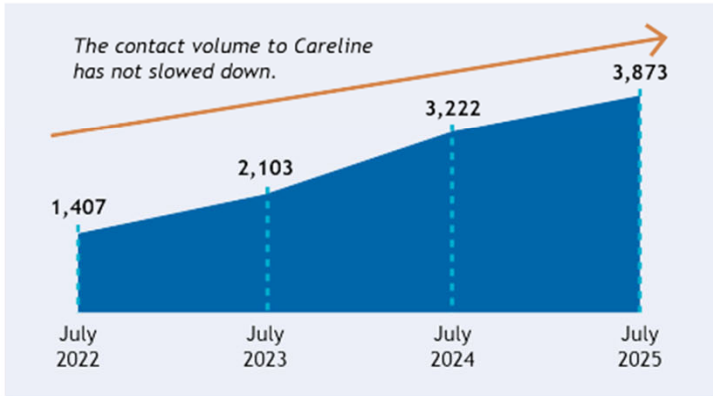



| Community | Contact Center*                 | Mobile Response  | 23-Hour                   | Short-Term                |
|-----------|---------------------------------|--|---------------------------|---------------------------|
| Anchorage | 911 transfers calls to Careline | Clinician + EMT/paramedic<br>Clinician + Law Enforcement | Voluntary and involuntary | Voluntary and involuntary |
| Soldotna  | 911 transfers calls to Careline | Peer + Peer/Telehealth<br>Clinician                      | TBD                       | TBD                       |
| Fairbanks | 911 transfers calls to Careline | Clinician + Peer   | Voluntary only            | Voluntary only            |
| Juneau    | 911 transfers calls to Careline | MIH model; EMT + Clinician                               | TBD                       | TBD                       |
| Ketchikan | Careline                        | MIH model  | TBD                       | TBD                       |
| Kotzebue  | Careline                        | TBD  | EmPATH Unit               | TBD                       |
| Mat-Su    | 911 transfers calls to Careline | Clinician + Peer   | Peer living room model    | Voluntary only            |

# Careline/988



Monthly contacts to Careline have increased since the launch of 988





## Metrics Dashboard

Showing Data for:  
January 2026

This metrics dashboard highlights key indicators for Alaska's Crisis Call Center. Data is updated monthly.

Crisis Contacts Answered  
(January 2026)

4,303

Contacts Answered by Month

|          |          |          |          |          |          |
|----------|----------|----------|----------|----------|----------|
| 4,241    | 4,336    | 4,196    | 3,831    | 4,347    | 4,303    |
| Aug 2025 | Sep 2025 | Oct 2025 | Nov 2025 | Dec 2025 | Jan 2026 |

Contact Type (January 2026)

|                  |                      |
|------------------|----------------------|
| 63%              | 37%                  |
| Careline Contact | Lifeline/988 Contact |

Average Speed of Answer  
(January 2026)

12

seconds

Top 5 Reasons for Contact (January 2026)

|               |     |
|---------------|-----|
| Mental Health | 59% |
| Lonely        | 56% |
| Anxiety       | 47% |
| Relationships | 44% |
| Depression    | 35% |

Referrals to Community Resources  
(January 2026)

942

Referrals provided  
23.0% of calls

Stabilization Rate  
(January 2026)

99.4%

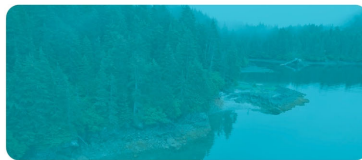
911 & Mobile Crisis Team (MCT)  
Involvement (January 2026)

|                |                        |                         |
|----------------|------------------------|-------------------------|
| 17             | 5                      | 83                      |
| 911 dispatched | MCT dispatch requested | Calls diverted from 911 |

Types of 911 Dispatches  
(January 2026)

|                        |   |
|------------------------|---|
| Without Caller Consent | 8 |
| With Caller Consent    | 4 |
| Other Reason           | 5 |

Privacy | Looker Studio



# Mobile Crisis Teams



Mobile Crisis Team fields an ever-growing number of calls

Jack Barnwell Dec 24, 2025



The Fairbanks Mobile Crisis Team SUV is parked outside Safeway on University Avenue on Thursday, Dec. 11, 2025. Courtesy Alaska Behavioral Health



The mobile crisis teams for the Fairbanks area have had a busy year, with 140 calls alone in November and 1,144 calls from January 1 to Nov. 30 in 2025.

## Tracking Anchorage's Crisis Response

Public Health and Safety Committee  
December 18, 2025



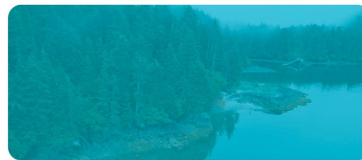
SPONSORED

### Mobile crisis team alleviating burden on law enforcement

By Mark Kelsey For the Mat-Su Health Foundation Aug 5, 2025  
1 min to read



Members of True North Recovery's mobile crisis team, left to right, James Savage, director of community engagement, Eric Farnsworth, mobile crisis peer support professional, Josh Engle, crisis services program manager, Travis Heintzman, mobile crisis peer support professional. Photo courtesy of True North Recovery



# Trustee FY27 GF/MH Recommendations

| Operating Budget Items, FY27                 |                   | Trustee Approved Recommendations |                   | Governor's Proposed Budget |                     | Notes                                     |
|--|-------------------|----------------------------------|-------------------|----------------------------|---------------------|---|
| Project                                      | GF/MH             | Associated MHTAAR                | GF/MH             | Associated MHTAAR          | GF/MH Difference    |   |
| Crisis Call Center (DOH)                     | \$500.00          | \$1,000.00                       | \$ -              | \$1,000.00                 | (\$500.00)          |   |
| <i>Subtotal</i>                              | <i>\$500.00</i>   | <i>\$1,000.00</i>                | <i>\$ -</i>       | <i>\$1,000.00</i>          |                     |   |
| Capital Budget Items, FY27                   |                   | Trustee Approved Recommendations |                   | Governor's Proposed Budget |                     | Notes                                     |
| Project                                      | GF/MH             | Associated MHTAAR                | GF/MH             | Associated MHTAAR          |                     |   |
| Coordinated Community Transportation (DOTPF) | \$700.00          | \$ -                             | \$700.00          | \$ -                       |                     |   |
| Special Needs Housing Grant (DOR)            | \$1,750.00        | \$200.00                         | \$ -              | \$200.00                   | (\$1,750.00)        | Budget includes \$1,750 in AHFC Dividends |
| Homeless Assistance Program (DOR)            | \$2,850.00        | \$950.00                         | \$ -              | \$950.00                   | (\$2,850.00)        | Budget includes \$4,050 in AHFC Dividends |
| Home Modifications & Upgrades (DOH)          | \$1,150.00        | \$ -                             | \$1,150.00        | \$ -                       |                     |   |
| <i>Subtotal</i>                              | <i>\$6,450.00</i> | <i>\$1,150.00</i>                | <i>\$1,850.00</i> | <i>\$1,150.00</i>          |                     |   |
| <b>TOTAL</b>                                 | <b>\$6,950.00</b> | <b>\$2,150.00</b>                | <b>\$1,850.00</b> | <b>\$2,150.00</b>          | <b>(\$5,100.00)</b> |   |

\*\*Chart does not show all Trust FY27 MHTAAR funding

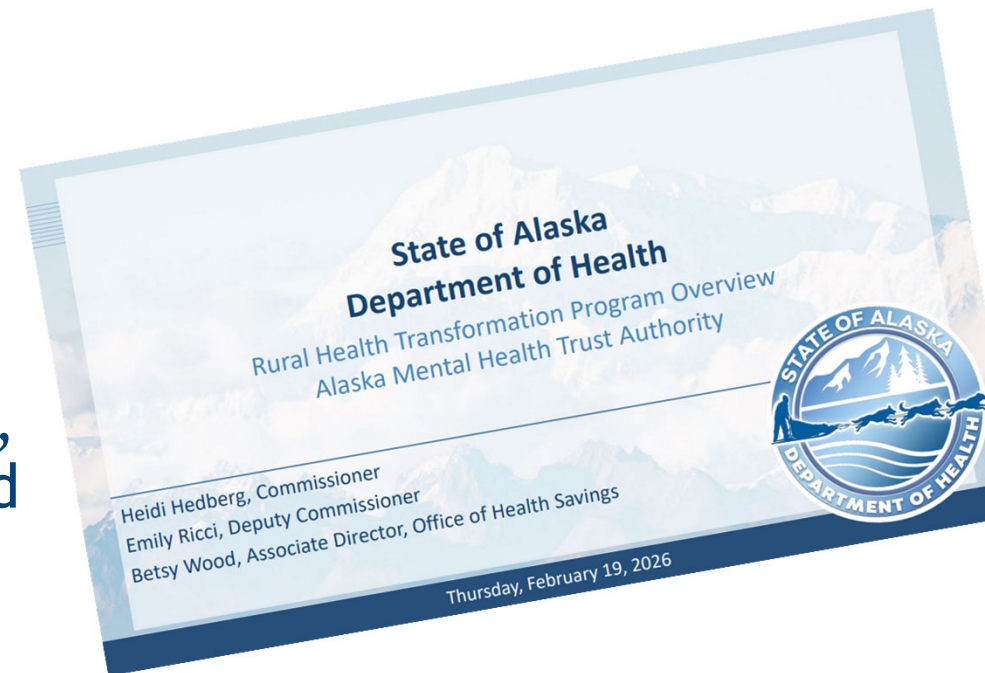
\*\*Chart does not show Trust grant funding to non-SOA partners





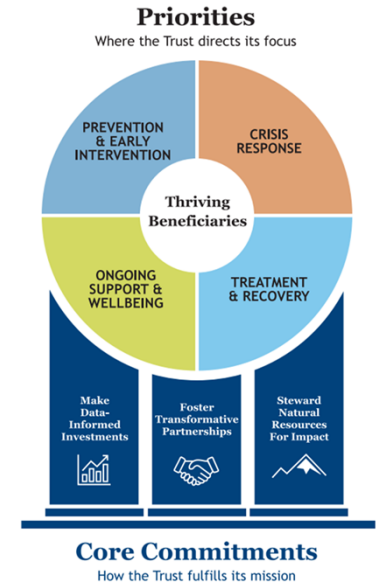
# Rural Health Transformation Program

- Excited to be partnering with DOH and other health leaders
- Joined the RHTP Advisory Council in 2026
- As a grant maker and systems change agent, the Trust is well suited to support this work



# Looking Ahead

- Ongoing grantmaking
- Trust Strategic Plan operationalization
- FY28 Trust budget development
- Trust Improving Lives Conference, September 17-18, 2026



**Trust**  
Alaska Mental Health Trust Authority

## Improving Lives

The Alaska Mental Health Trust Authority Conference

**September 17 and 18, 2026**

8:30 AM – 5:30 PM  
Dena'ina Civic and Convention Center  
Anchorage, Alaska

Mark your calendars!



# Thank You Questions?

**Trust**  
Alaska Mental Health  
Trust Authority



**DONNA**  
Community Partner

“If we can head off disabilities at an early age and support kiddos and their families, it’s a much better deal than waiting until kids are older before providing intervention services.”

**Trust**  
Alaska Mental Health  
Trust Authority



**JAY**  
Trust beneficiary

“Mental Health Trust funding has helped me in so many ways, but the most significant is that it has broken me free from the chains of addiction. I’m free to be the person I always wanted to be.”

**Trust**  
Alaska Mental Health  
Trust Authority



**ALLIE**  
Trust Beneficiary

“I think I’m going to be an amazing makeup artist someday; it’s my dream. It makes me feel very creative.”

**Trust**  
Alaska Mental Health  
Trust Authority

[alaskamentalthrust.org](http://alaskamentalthrust.org)