

# Alaska's Low Incidence Disabilities (LID) Outreach Program

Presented by:

**Olivia Yancey**  
SESA Executive Director  
[oyancey@sesa.org](mailto:oyancey@sesa.org)



*Welcome*



**THE KEY TO SUCCESS FOR ALASKAN  
EDUCATORS SERVING STUDENTS  
WITH LOW INCIDENCE DISABILITIES**

[www.sesa.org](http://www.sesa.org)



# About Us

SESA is an educational service agency comprised of a low incidence disability service inclusive of a statewide lending library. Low incidence disabilities include **autism, deaf and hard of hearing (DHH), deafblind, vision impairment, emotional disabilities** and **multiple disabilities**.

In addition, SESA operates three grants:  
**Alaska Autism Resource Center (AARC)**  
**Alaska Deafblind Project**  
**Alaska Center for Accessible Materials (AKCAM)**

# The SESA Team



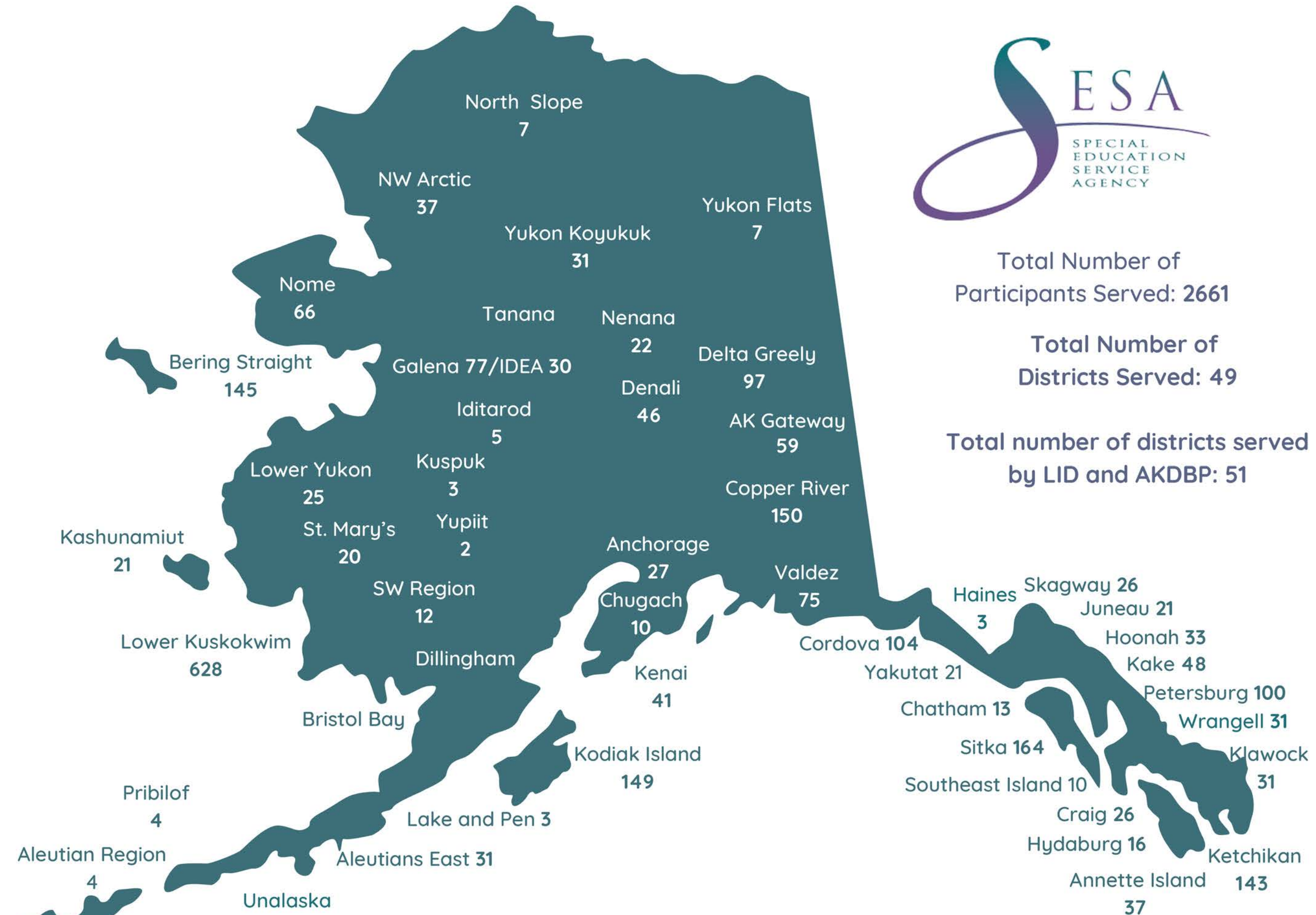
In 1986, SESA's Low Incidence Disabilities Outreach Program was formed to offer rural and rural remote Alaskans access to special education teachers with formal training and professional teaching experience with students who have low incidence disabilities (AS 14.30.600 – 14.30.650).

SESA education specialists bring an average of **13 years** of valuable teaching and consulting experience

**51 school districts and 148 schools (2/19/26)** have connected with the LID and the AKDBP programs, **so far** this school year.

Low Incidence Disabilities (LID) are rare and impact less than **1% of school-aged children**. SESA education specialists help Alaska school districts meet their **unique educational needs**.

# LID Participants Across Districts FY26\*



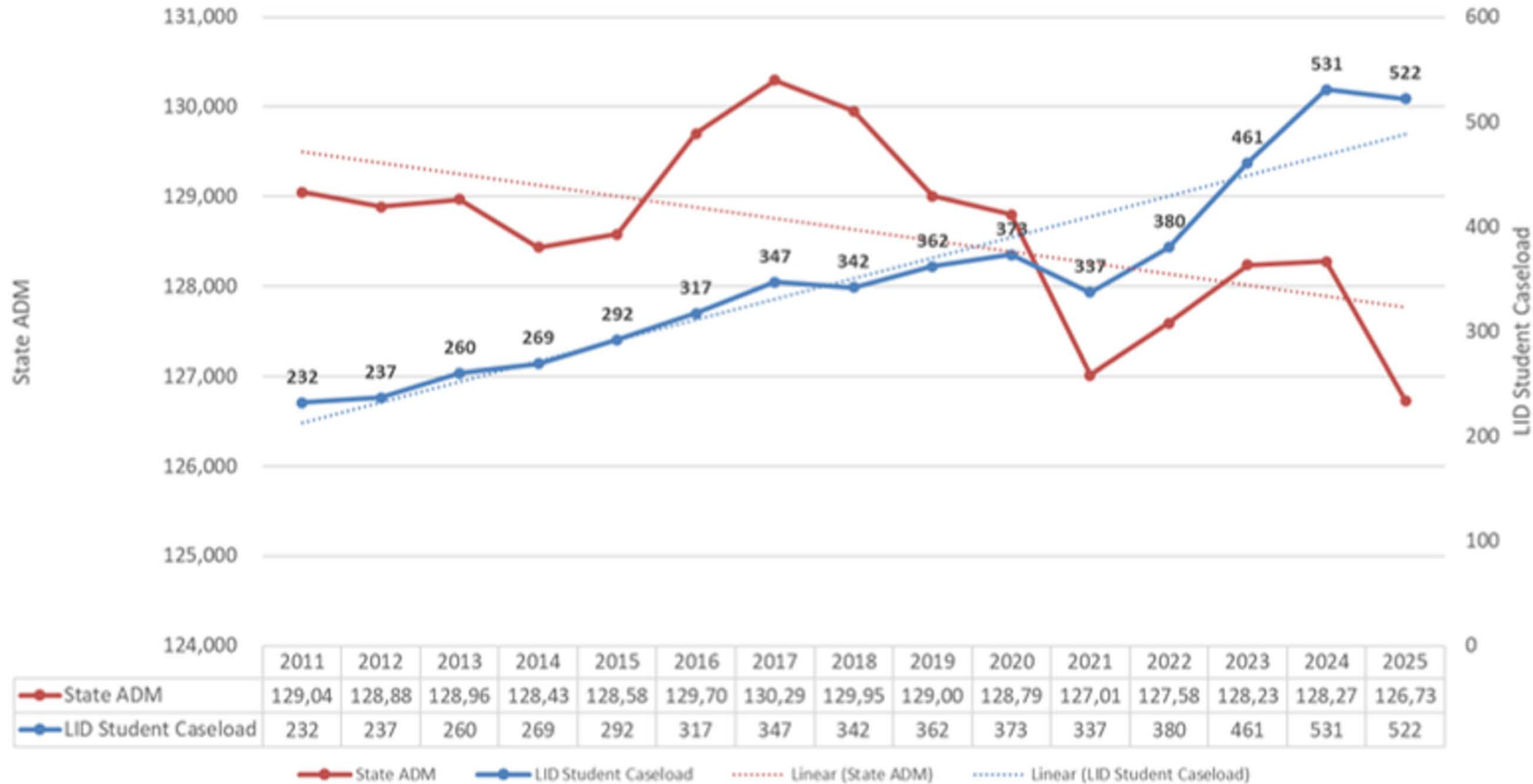
Total Number of Participants Served: 2661

Total Number of Districts Served: 49

Total number of districts served by LID and AKDBP: 51

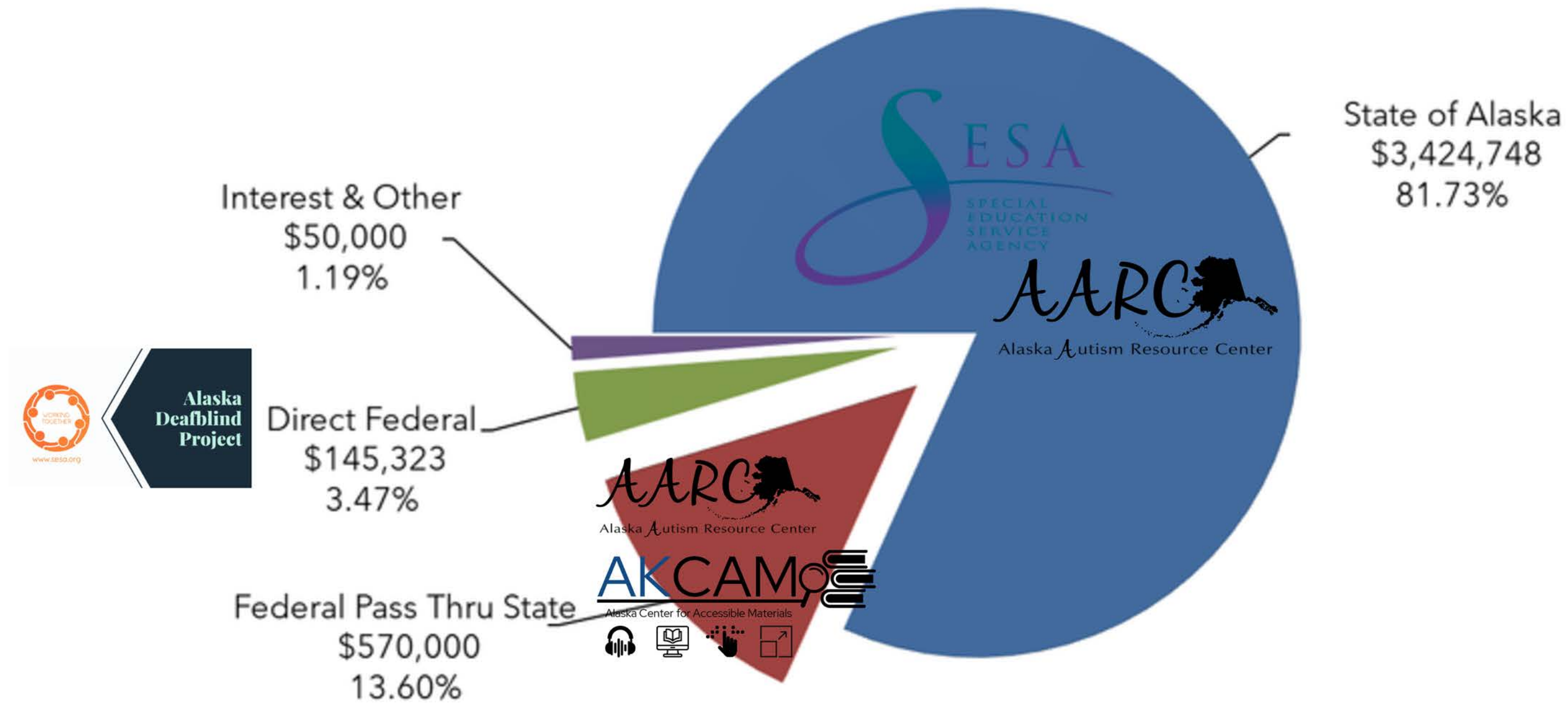
\*Data from activities dated 7/1/2025 to 2/17/2026

State Average Daily Membership (ADM) vs. Low Incidence Disabilities (LID) Student Caseload  
15 Year History



# Funding for SESA

## Revenues by Source FY 2026 Budget



## SPECIAL EDUCATION SERVICE AGENCY

### Revenue Budget

#### FY 2026 Budget

	FY2025 Actual	FY2026 Budget Revision #2	Change
<b>FUND 100: Low Incidence Disabilities (LID)/General Fund</b>			
State of Alaska <sup>1</sup>	\$ 2,967,004	\$ 2,931,304	\$ (35,700)
PERS On-Behalf	10,509	14,407	3,898
TRS On-Behalf	196,805	286,036	89,232
E-Rate	4,320	-	(4,320)
Interest & Other	110,169	50,000	(60,169)
Use Fund Balance (Add to Fund Balance)	(430,768)	612,421	1,043,189
<b>FUND TOTAL</b>	<b>\$ 2,858,039</b>	<b>\$ 3,894,168</b>	<b>\$ 1,036,129</b>

# SESA Funding AS 14.30.650

Prior Fiscal Year Statewide Avg  
Daily Membership (ADM) x \$23.13

## Special Education Service Agency

• the key to success for alaskan educators •

### Low Incidence Disabilities/General Fund FY 2026 Budget Summary

	FY2025 Budget	FY2026 Budget Revision #1	Change
<b>Fund 100: LID/General Fund</b>			
Function: Sped Support Services	\$ 2,159,489	\$ 2,436,416	\$ 276,926
Support Services - Instruction	\$ 10,000	\$ 10,000	\$ -
Library	\$ 19,380	\$ 32,180	\$ 12,800
Inservice	\$ 8,100	\$ 5,713	\$ (2,387)
Agency Administration	\$ -	\$ 189,614	\$ 189,614
Board of Directors	\$ 36,670	\$ 42,741	\$ 6,071
Executive Director's Office	\$ 111,363	\$ 111,388	\$ 24
Agency Admin Support	\$ 527,447	\$ 572,366	\$ 44,919
Fiscal Services	\$ 158,300	\$ 174,846	\$ 16,546
Personnel Services	\$ 55,260	\$ 39,899	\$ (15,361)
Data Processing	\$ 90,950	\$ 125,520	\$ 34,570
Maintenance & Operations	\$ 149,319	\$ 153,486	\$ 4,167

<b><u>TOTAL</u></b>	<b><u>\$ 3,326,279</u></b>	<b><u>\$ 3,894,168</u></b>	<b><u>\$ 567,889</u></b>
---------------------	----------------------------	----------------------------	--------------------------

# Children	512	512	0.00
# Trainings	120	120	0.00
# Specialists	11.70	13.89	2.19
# Support Staff	6.44	5.54	(0.90)
# Administrators	0.60	1.60	1.00
Pupil/Specialist Ratio	40.03	36.86	(3.17)
Avg Per Pupil Expenditure	\$ 7,101.36	\$ 7,605.80	\$ 504.43
Adj Per Pupil Expenditure	\$ 6,614.58	\$ 7,018.99	\$ 404.41
Adj Per Pupil+Trngs Expen.	\$ 5,698.02	\$ 6,047.05	\$ 349.02

# Since August 2025

SESA has provided technical assistance to **over 6,704 Alaskans.**

SESA programs have offered **over 57 site-based, district, and state-wide trainings for Alaskans** on evidence based or best practices related to the educational program of students with low incidence disabilities. Over **56%** of these trainings were conducted via distance delivery (e.g., Zoom).

SESA Low Incidence Disability Programs have been offered and provided support to **495 students and their school teams.**

SESA has produced **295 customized student or patron-focused reports** offering recommendations and guidance.

SESA LID specialists have made **270 onsite consultations or trainings** for Alaskans.

Alaska Center of Accessible Materials has created and connected **9 accessible educational materials projects** for school teams and their students with print disabilities.

Alaska Autism Resource Center has conducted **20 trainings and 24 community outreach activities.**

The Anne Freitag Library has **1,488 patrons** and continues to do outreach across the state during conferences, Facebook, and the SESA Newsletter to share what is available at the statewide lending library.

# SESA Consultations

For SESA Education Specialists all of Alaska is their classroom. After each on-site visit an anonymous satisfaction survey is sent to each recipient of the SESA report. Across 3 school years, an **average 95.2% of Alaskans (672) shared that they gained knowledge about the disability and how to implement a strategy.**



Image description: Vision Impairment Education Specialist, Angel Black, observing a student in southeast Alaska to offer educational recommendations to the school team while on site



The image to the right is of Multiple Disabilities Education Specialist, Amy Topmiller, observing a student working with her teacher on a new prevocational task. School teams benefit from the cross-program collaboration that often occurs at SESA.



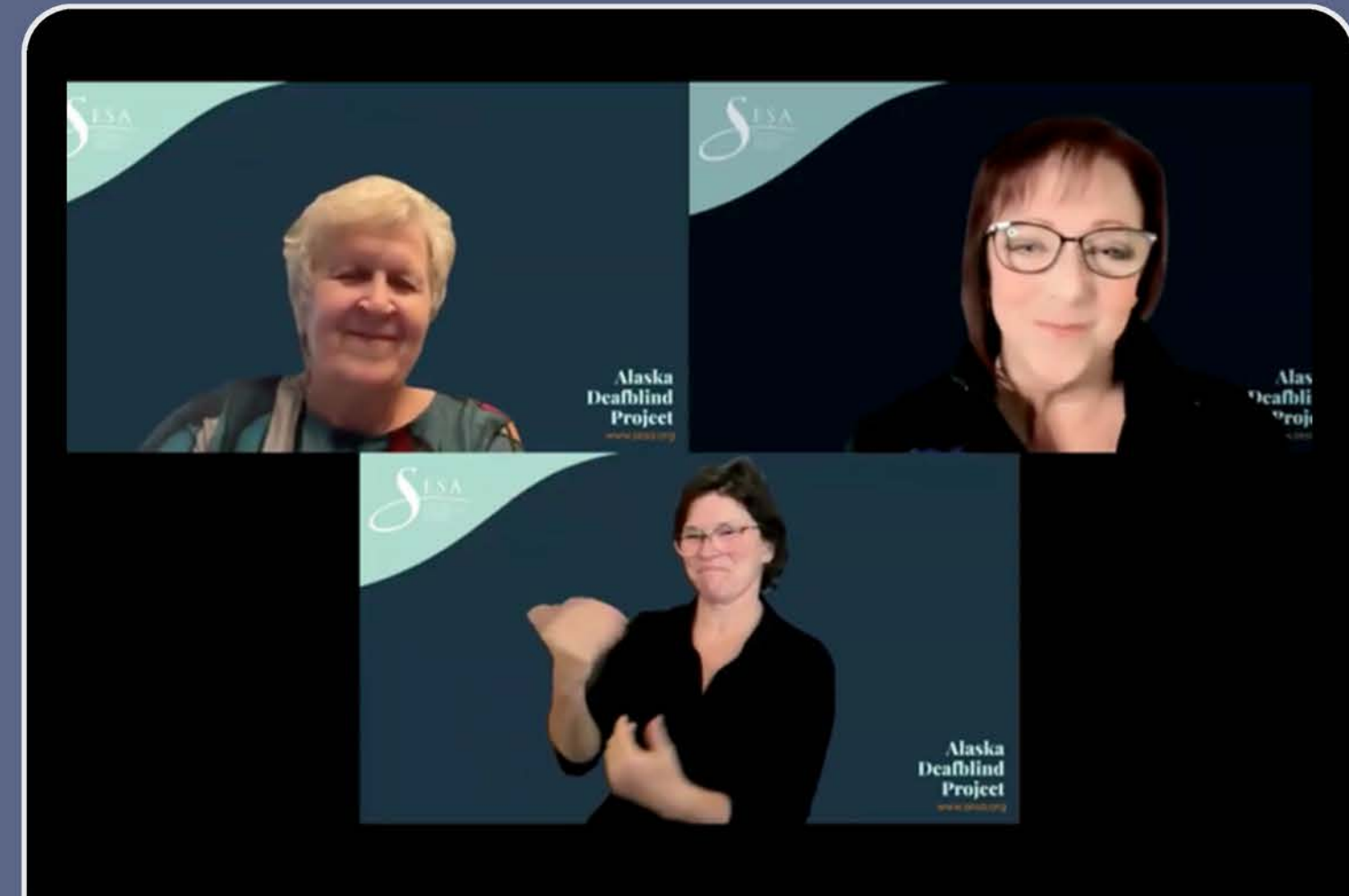
In preparation for a site visit John Barrowman, Autism Education Specialist, visited SESA's statewide lending library to identify items (e.g., Go Talk 4+, Teeth Model, Toothbrush Timer, Self-Help Skills for People with Autism by Stephen R. Anderson) for school teams to trial. This helps save school districts funds and increases the student's access to individualized communication and life skills resources.

# SESA Training

As SESA specialists travel to every corner of Alaska they not only have the opportunity to share their knowledge with students, but with educators as well. SESA has a list of trainings on a wide range of topics that are available free to the Alaska school districts and can be offered by distance or in-person.



Emotional Disabilities Education Specialist, Lyon Johnson, has frequently been asked to support complex cases and offer school and district wide trainings throughout the school year.



Vision Impairment and Deafblind Specialist, Angel Black (top right), hosted guest speaker, Dr. Susan M. Bashinski (top left), for a webinar to discuss Facilitating and Supporting the Social-Emotional Development of Learners Who Experience Deafblindness



# Connect With Us

2600 Denali Street  
Suite 200  
Anchorage, Alaska 99503

(907) 334-1300

Business Hours:  
Monday - Friday  
8:00am - 4:30pm

[sesa@sesa.org](mailto:sesa@sesa.org)



**Special  
Education  
Service Agency -  
Alaska**

Sign up for our quarterly newsletter to stay up to date on all of our SESA adventures, including new library materials, special events, newsletters, and much more!

