

# DEPARTMENT OF CORRECTIONS

HOUSE COMMUNITY & REGIONAL AFFAIRS COMMITTEE

MARCH 2, 2021





# MISSION AND CORE SERVICES

- Mission: To provide secure confinement, reformatory programs, and a process of supervised community reintegration to enhance the safety of our communities
- Department FY2022 Positions: 2,055
- Department FY2022 Budget Request: \$398,490.4

Department Divisions	Core Service: Secure Confinement	Core Service: Supervised Release	Core Service: Reformatory Programs
Institutions	X	X	X
Health & Rehabilitation Services	X		X
Pretrial, Probation, and Parole		X	X
Administrative Services	X	X	X

*\*All \$\$ in thousands*



# CORE SERVICES

## Secure Confinement

- 12 in-state correctional facilities
- 15 regional community jails
- Classification and furlough
- Inmate transportation
- Physical health care
- Correctional academy

## Supervised Release

- Statewide pretrial, probation and parole offices
- 7 community residential centers
- Electronic monitoring
- Correctional academy
- Parole board

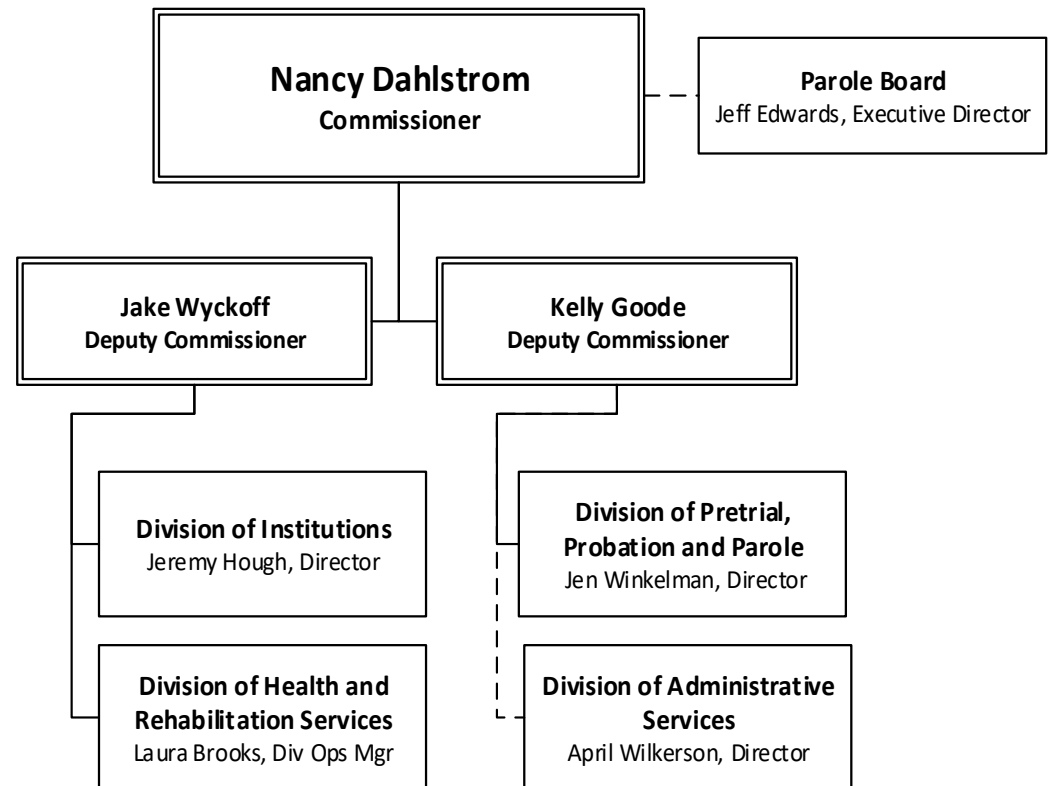
## Reformative Programs

- Behavioral health care
- Substance abuse treatment
- Sex offender management
- Education and vocational programs
- Domestic violence intervention programs
- Faith-based services
- Recidivism reduction
- Reentry services



# ORGANIZATIONAL CHART

- Commissioner's Office
- Division of Institutions
- Division of Health and Rehabilitation Services
- Division of Pretrial, Probation and Parole
- Division of Administrative Services
- Parole Board





## DOC AT A GLANCE

- Alaska is one of seven states that operate a unified correctional system. A state unified system is one in which there is an integrated state-level prison and jail system.
- DOC booked 31,204 offenders into its facilities in 2020
  - ✓ 19,959 were unique offenders
  - ✓ 1,452 were non-criminal Title 47 bookings
- As of 12/31/2020, DOC was responsible for 10,626 individuals
  - ✓ 4,559 offenders in jail or prison
  - ✓ 187 offenders on sentenced electronic monitoring (EM)
  - ✓ 243 offenders in community residential centers (CRCs)
  - ✓ 2,729 defendants on pretrial supervision (1,456 on pretrial EM)
  - ✓ 2,908 offenders on probation or parole

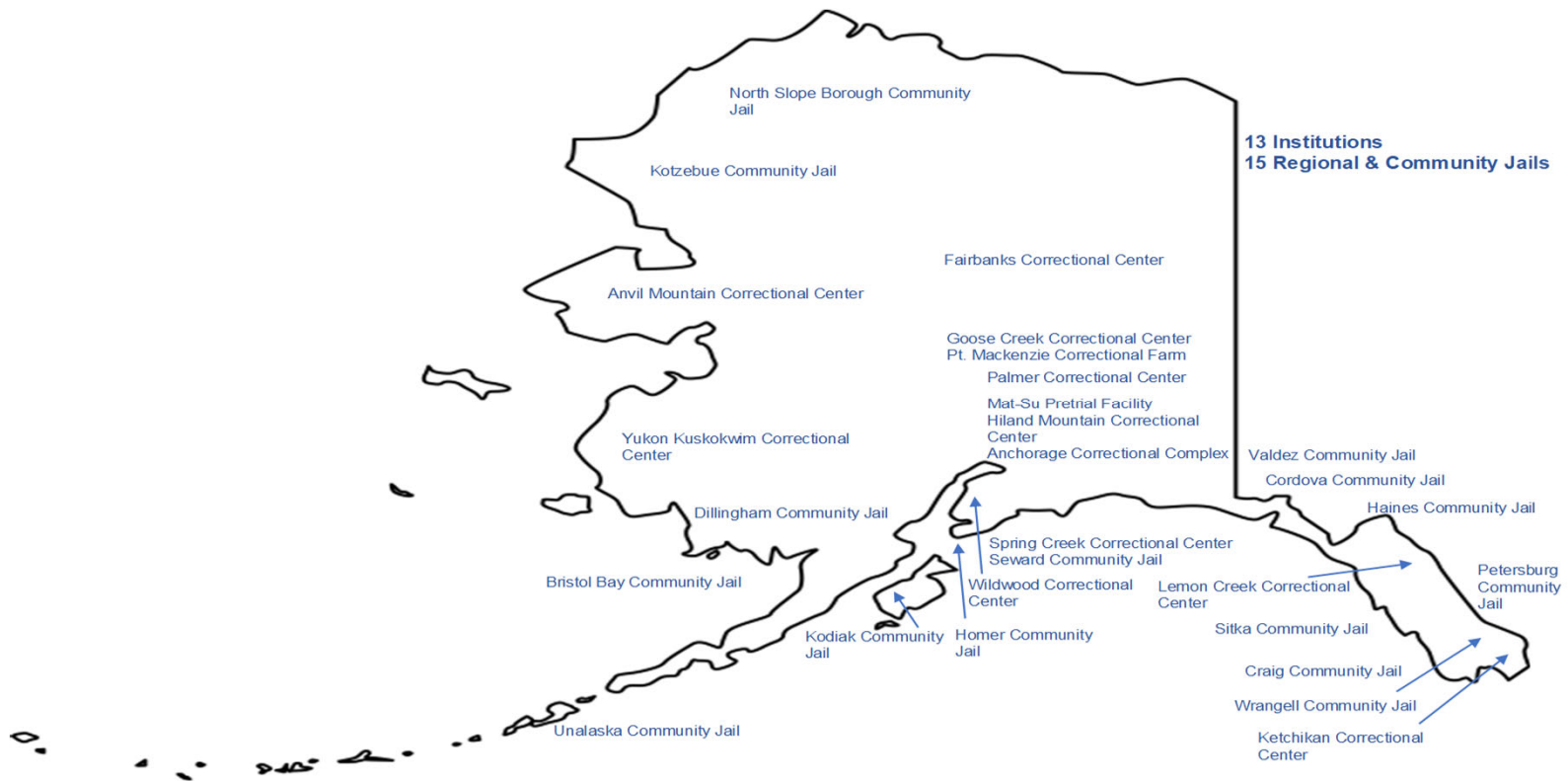


# DIVISION OF INSTITUTIONS

- Institution Director's Office
  - Inmate Time Accounting
  - Chaplaincy Program
  - Prison Rape Elimination Act Oversight
  - Inmate Grievance Resolution
  - Security Threat Group
- Classification and Furlough
  - Inmate Classification
  - Inmate Furlough
- Inmate Transportation and Point of Arrest
  - Inmate Medical Transports
  - Inmate Housing Transports
  - K-9 Unit
  - Point of Arrest
- 13 Correctional Centers
  - 8 Remand Facilities
  - 4 Sentenced Facilities
- 7 Community Residential Centers (CRC)
  - 5 Communities
- 15 Regional and Community Jails
  - 15 locations
- Sentenced to Electronic Monitoring (EM)
  - 7 locations
- Out-of-State
  - Medical and Separatee placements



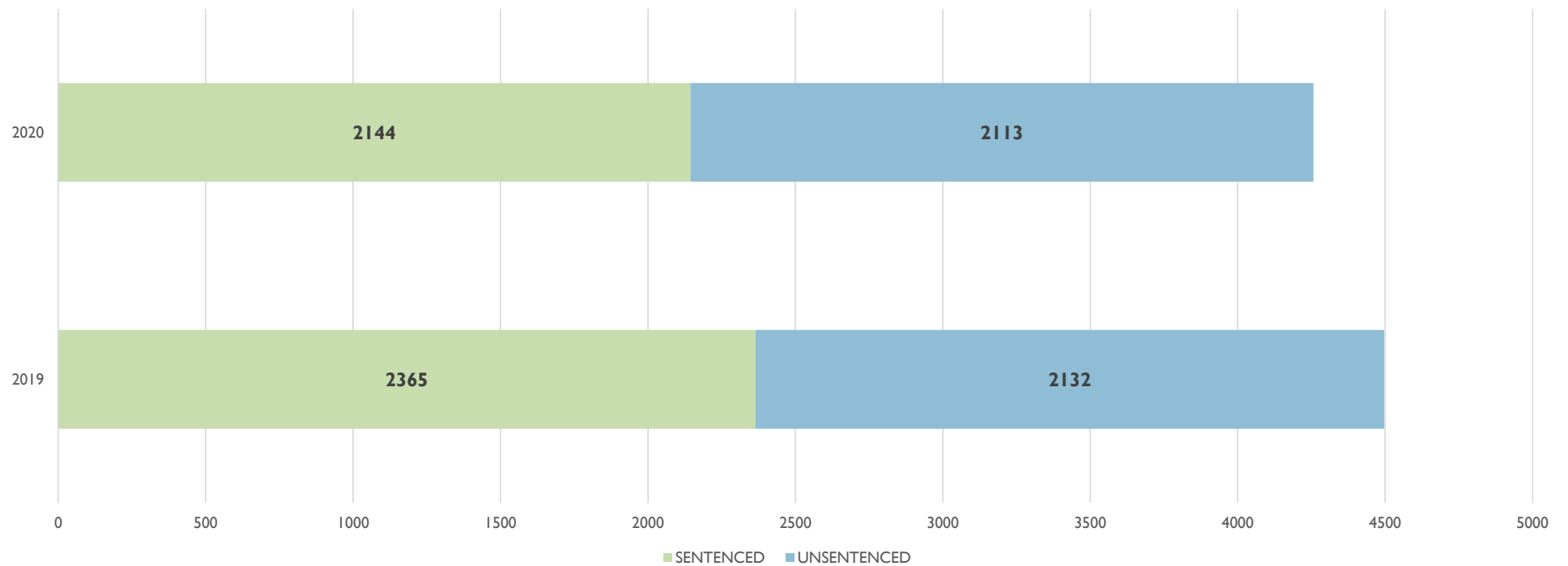
# SECURE CONFINEMENT





# PRISON STATUS COMPARISON

PRISON POPULATION BY LEGAL STATUS: JULY 1

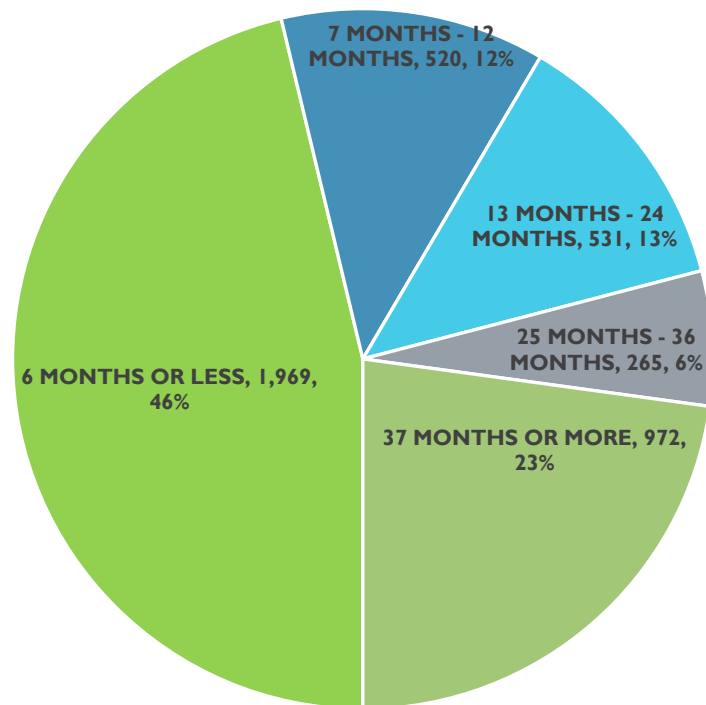






# PRISON POPULATION BY LENGTH OF STAY

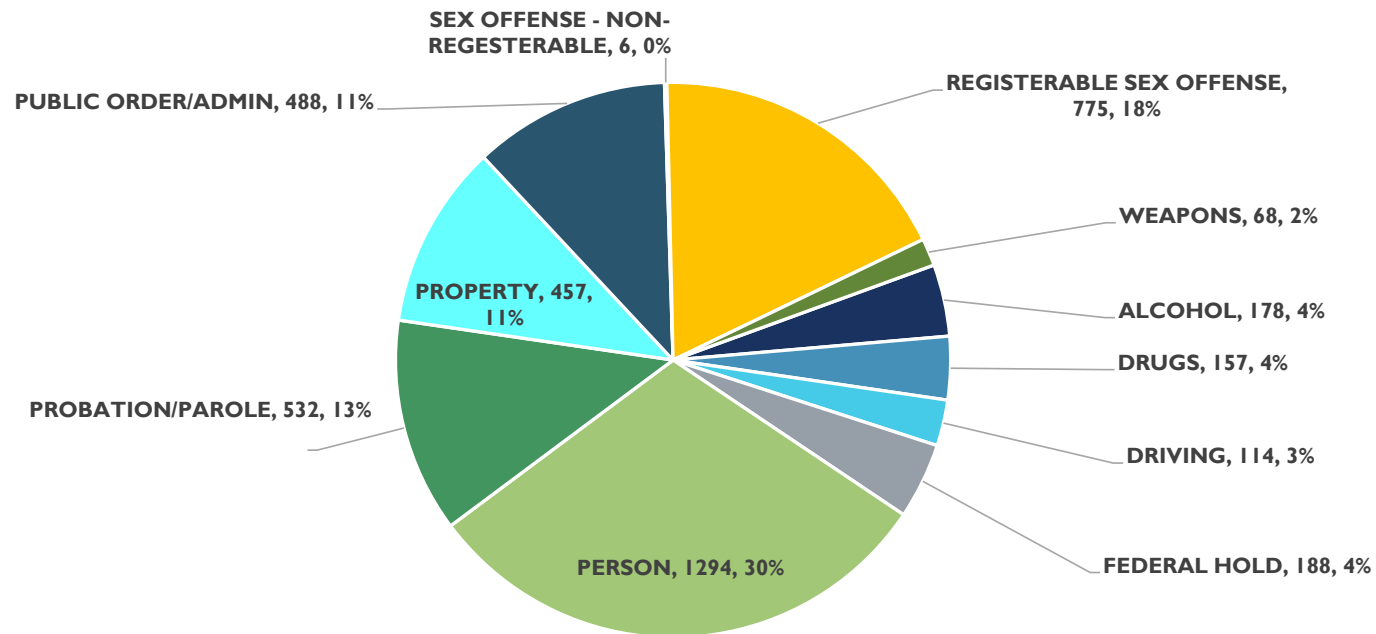
JULY 1, 2020





# PRISON POPULATION BY OFFENSE CLASS

JULY 1, 2020





# DIVISION OF HEALTH & REHABILITATION SERVICES

- Health & Rehabilitation Director's Office

- Medical Oversight
- Medicaid Assistance

- Physical Health Care

- Medical
- Dental

- Behavioral Health Care

- Mental Health Services

- Substance Abuse

- *Assessment*
- *Residential Treatment*
- *Institutional Out-Patient Treatment*

- Sex Offender Management

- Polygraph
- Institutional Sex Offender Program
- Community Sex Offender Program

- Domestic Violence Program

- Batterer's Intervention Program

- Reentry & Recidivism Unit

- Offender Reentry
- Community Coordination

- Education/Vocational Programs

- Basic Adult Education
- Apprenticeship Training
- Vocational Training



# DIVISION OF PRETRIAL, PROBATION, & PAROLE

- Probation and Parole Director's Office

- Victim Service Unit

- Pretrial Services

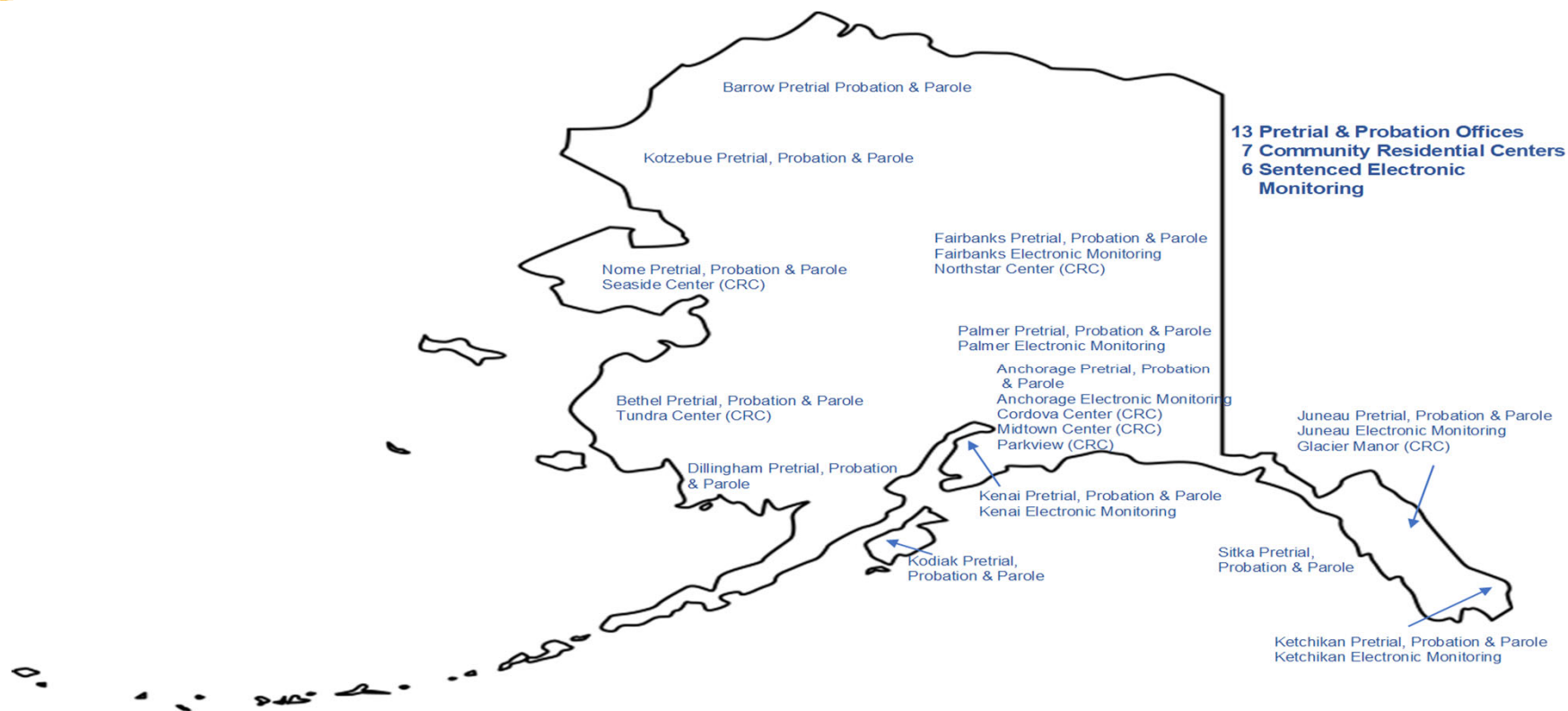
- Assessments
  - Basic Supervision
  - Enhanced Supervision

- Statewide Probation and Parole

- 13 regional locations
  - Specialty
  - Probation Accountability with Certain Enforcement
  - Pre-Sentencing Unit
  - Interstate Compact



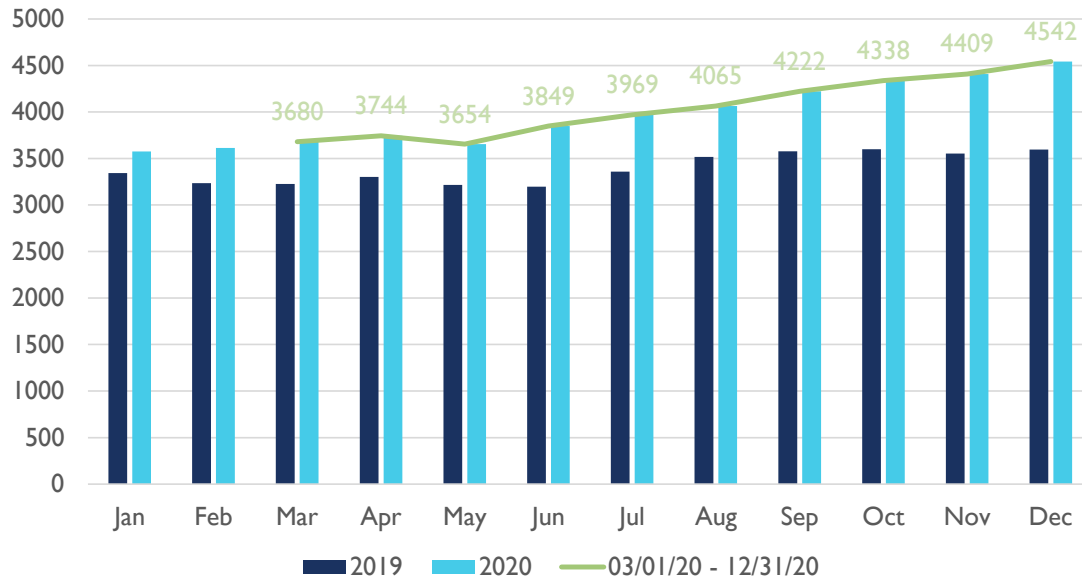
# SUPERVISED RELEASE





# PRE-TRIAL SERVICES - SUPERVISION

**PED Total Assigned**

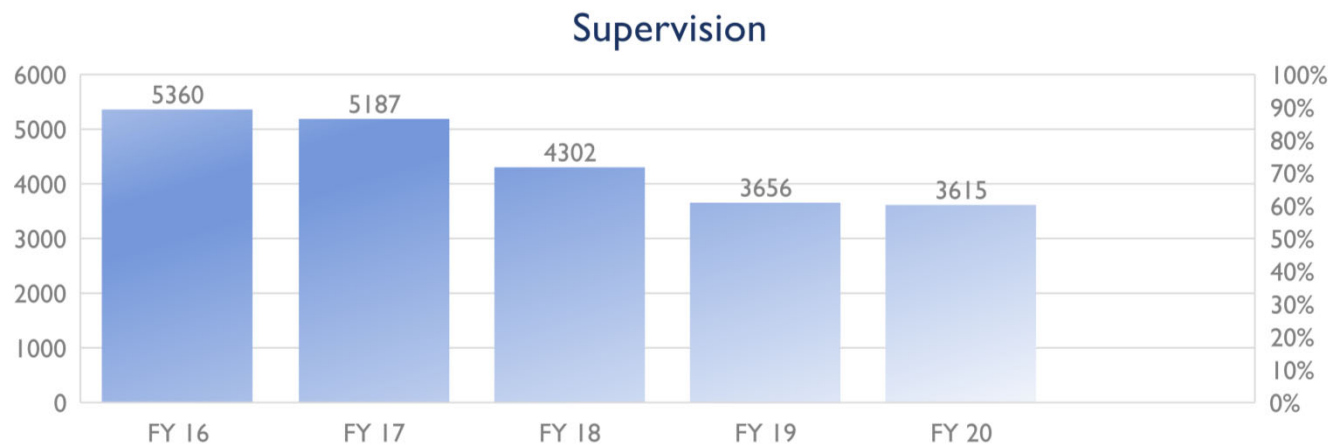


Green line represents when Governor issues Public Health disaster emergency declaration for Covid-19.

03/02/20	12/31/20
3680 Assigned	4512 assigned
1257 Incarcerated	1312 Incarcerated
340 Active Warrants	471 Active Warrants
2083 Community Supervision	2729 Community Supervision (31% increase)



# STATEWIDE PROBATION & PAROLE



- AS 33.05.040 (b) (caseload cap of 75) \*effective 07/01/19.
- AS 33.05.020 (g) (establish a sanction and incentive program) \*effective 01/01/17.  
FY20 5255 sanctions were issued.



# DIVISION OF ADMINISTRATIVE SERVICES

- Administrative Services
  - Budget and Finance
  - Inmate Banking
  - Auditing and Internal Controls
  - Payroll and Position Classification
  - Construction Procurement and Space Liaison
  - Alcohol Ignition Interlock Device Certification
  - Departmental Ethics Supervisor
- Information Technology
  - Alaska Corrections Offender Management System
  - Inmate Law Library
  - Inmate Technology Support
- Research and Records
  - PFD Eligibility
  - Research and Reporting
  - Criminal Justice Information Security
  - Data Management
- Facilities Capital Unit & OSHA Compliance
  - Institution Renovation, Repairs, and Construction Management
  - OSHA Compliance and Oversight
- State Facilities Rent
  - Douglas Island Center Building
  - Palmer State Office Building





# BOARD OF PAROLE

*CORE SERVICE: SUPERVISED RELEASE*

- Board of Parole
  - Discretionary Parole
  - Mandatory Parole
  - Special Medical Parole
  - Geriatric Parole
  - Clemency Investigations
  
- The Board of Parole consists of five members appointed by the Governor



# OFFICE OF THE COMMISSIONER

## ■ Commissioner's Office

- Constituent Relations
- Compliance Standards
- Inmate ADA Grievances
- Public Information
- Policy and Procedures

## ■ Recruitment and Retention

- Recruitment Outreach
- Applicant Assistance
- Employee Backgrounds
- Officer Medical Reimbursement
- Recruitment Incentive Leave Program
- Employee Wellness Program

## ■ Training Academy

- Basic Officer Training
- Field Officer Training
- Prisoner Transportation Officer Training
- Firearm / Taser Training and Certification
- Municipal Officer Academy

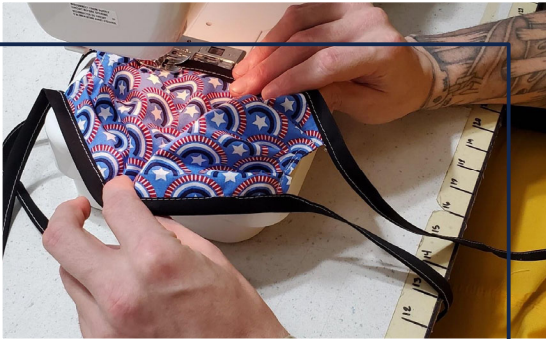


# GOALS AND OBJECTIVES

- ✓ Protect the public
- ✓ Provide safe and secure care and custody
- ✓ Ensure that incarcerated offenders spend productive time while in custody
- ✓ Reentry and community supervision
- ✓ Reduce recidivism
- ✓ Work with stakeholders to achieve these goals



# HOT TOPICS



## COVID-19

[doc.alaska.gov/covid-19](https://doc.alaska.gov/covid-19)



## Recruitment and Retention

[doc.alaska.gov/corrections/officer-recruitment#](https://doc.alaska.gov/corrections/officer-recruitment#)



## Palmer Correctional Center

[doc.alaska.gov/institutions/palmer](https://doc.alaska.gov/institutions/palmer)



# COVID-19 IMPACTS

## OPERATIONAL IMPACTS

- Court System Changes
  - Increase in pretrial release
  - Increase in presentence population
- Attorney-client visits
- Suspended visitation and certain programming
- Free phone calls for inmates

## BUDGETARY IMPACTS

- GF lapses associated with suspended programming
- Federal funds offset:
  - \$617,898 in COVID-19 leave and overtime related expenditures
  - \$479,896 in COVID-19 related expenditures
    - Personal Protective Equipment, Cleaning and Medical Supplies, Employee Fit Testing, Employee Housing, Inmate Charters and Housing, Inmate Stipends Related to Increased Inmate Job Workers, Increased Cleaning at All Institutions



# THANK YOU



# QUESTIONS?