

Alaskans depend on our resources for food,
culture, fun, and making a living

Tim Stallard
Alien Species Control, LLC

Anchorage Cooperative
Invasive Species Management Area



Alien Species Control,
LLC



Defining
the
problem


= Harm



Executive Order 13112 defines invasive species as "...an alien (or non-native) species whose introduction does, or is likely to cause economic or environmental HARM or harm to human health".

Only a small proportion of introduced species are invasive

What's in a name?

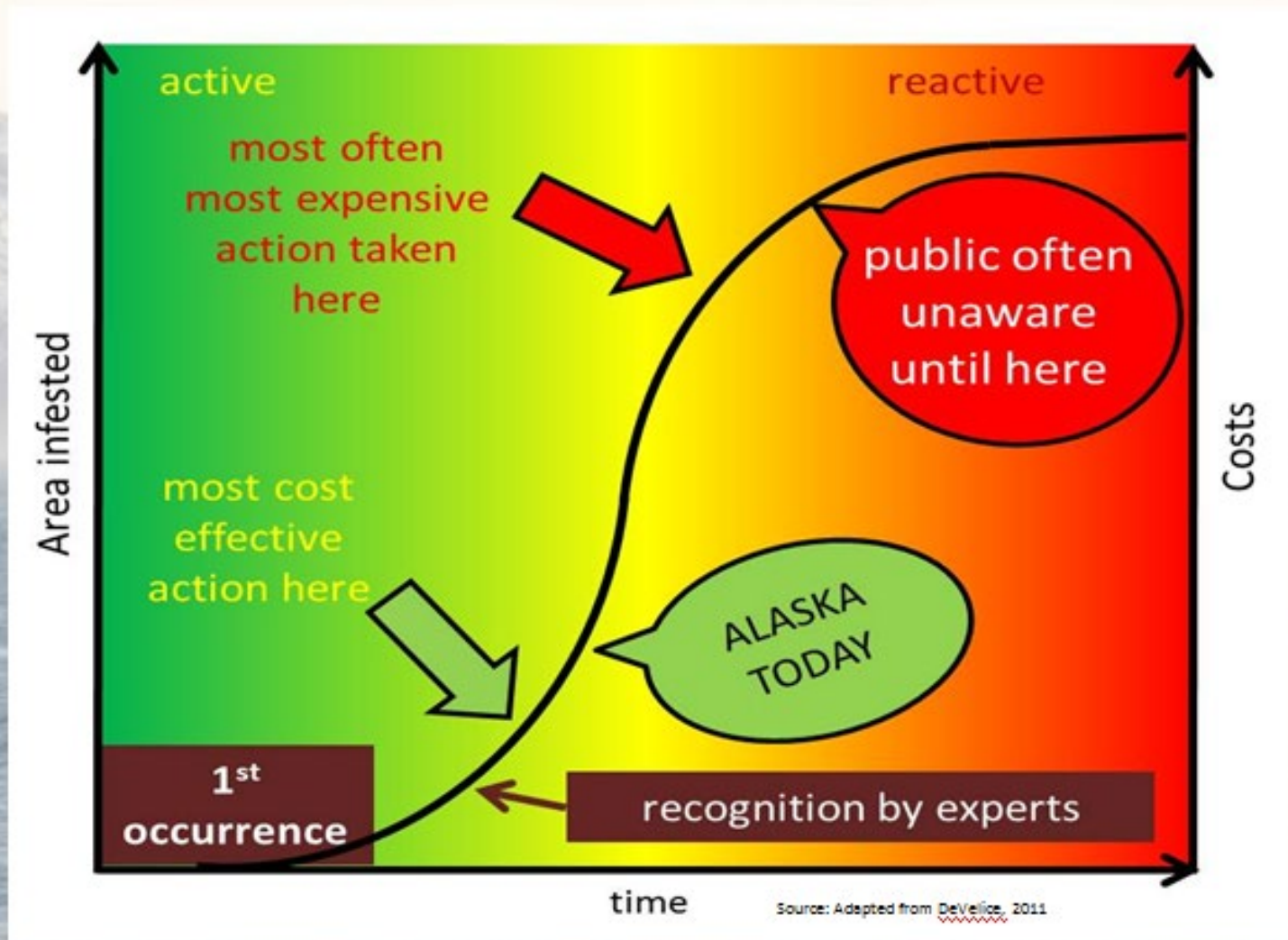
- Invasive = Harm
 - Invade natural areas
 - Crowd out native species and form monocultures
 - Disrupt ecosystem processes
 - "Biological Wildfire"
 - Highly adaptable / competitive - spread far and wide and hard to control
 - Economic harm to agriculture, fisheries, tourism, infrastructure, property values, etc.
 - Harm to humans or animals (e.g., giant hogweed)
- 
- Weeds = unloved plants
 - *Noxious* = restricted invasive plant

Chokecherries - Taking over a forest near you

Anchorage, Fairbanks, Juneau, Kenai/Homer, Mat-Su...



As species establish, costs go up!



Invasive Species Curve – highlighting the ‘Biological Wildfire’

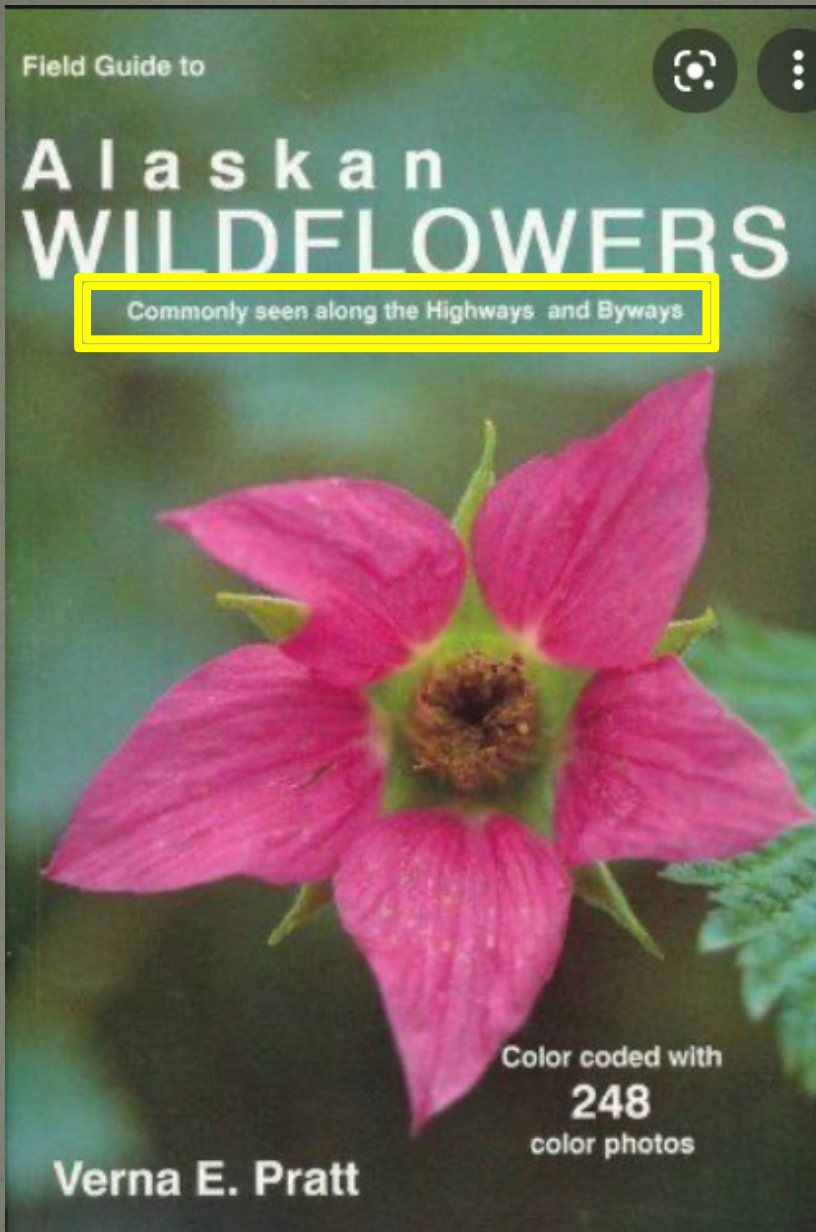
Alaska is facing a Biological Wildfire

...but we aren't organized for it

What's needed:

- Prevention
- Rapid Response
- Coordination
 - Equivalent to *Incident Command System*
- Alaska Invasive Species Council





- Wildflowers are rapidly being replaced by monocultures of invasive weeds along Alaska's Highways



Spotted knapweed plus white sweetclover along Turnagain Arm

**Fairbanks is
drowning in
BIRD VETCH!**



Just say "No" to cracca!

Invasive *Elodea* threatens salmon spawning habitat (Interior, Kenai, Mat-Su, Cordova, and Anchorage)

Invasive plant could cost salmon industry \$159 million per year, ISER study finds



Northern Pike harming salmon runs in Southcentral



WANTED!



Crayfish / Crawfish / Crawdad...

Please contact the Kodiak Soil and Water Conservation District if you find any of these aquatic animals. Call: 907-486-5574

Crayfish are not native to Kodiak, they have the potential to damage our salmon habitat, but we need to know more...

We are currently conducting surveys to assess the presence and abundance of crayfish in Buskin Lake and River waters – please contact us with any information concerning sightings and locations.

Kodiak Soil and Water Conservation District
518 West Marine Way, Suite 206, Kodiak AK
Office: 907-486-5574 or cell: 907-539-5372
E-mail: blythe.brown@kodiaksoilandwater.org



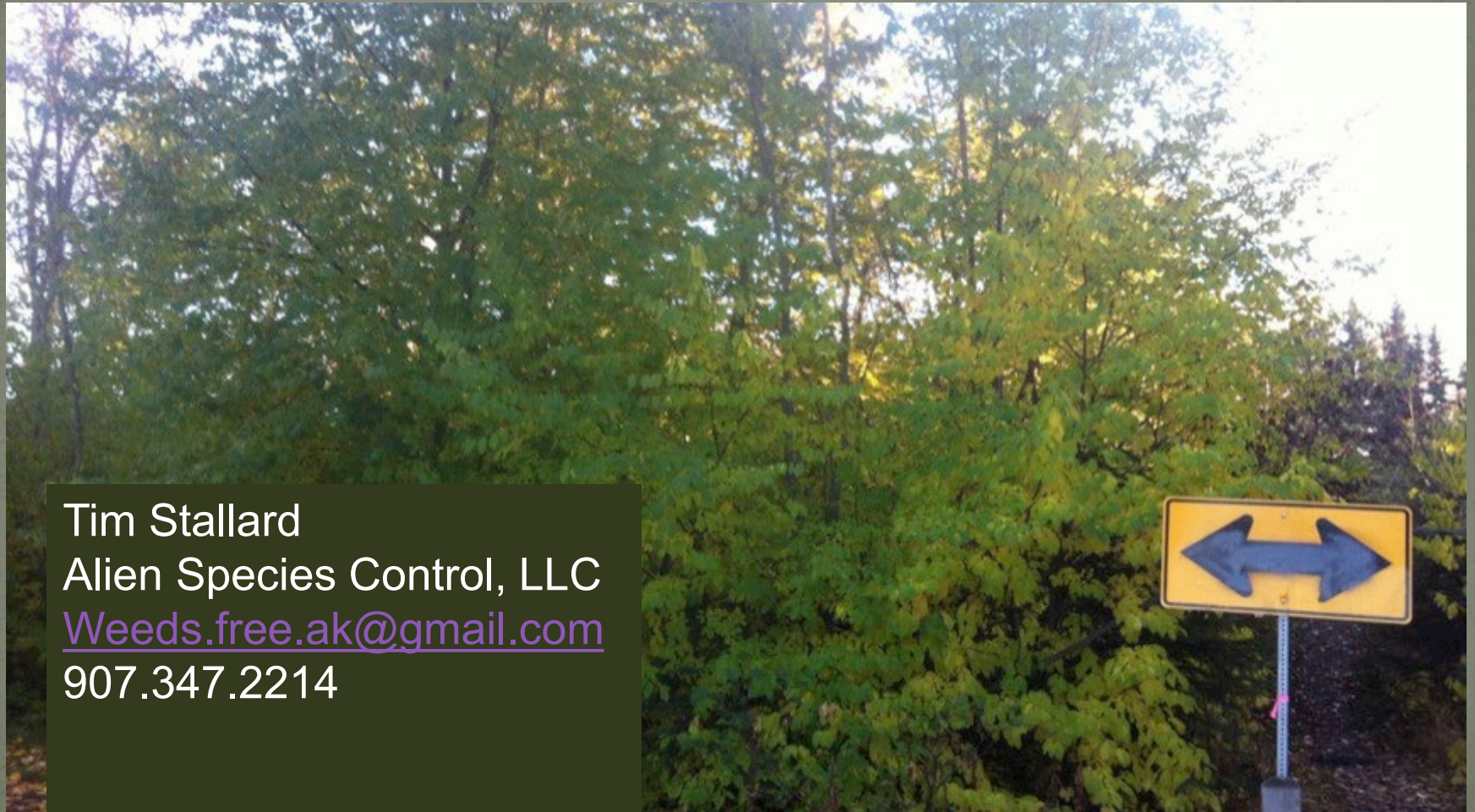
Report Invasive Species: 1-877-INVASIV www.alaskainvasives.org

A close-up photograph of a dense thicket of knotweed plants. The leaves are bright green, heart-shaped, and have serrated edges. The plants are growing in a dense, overlapping manner, filling the frame. At the top of the image, there is a green banner with the text "GOT KNOTWEED?" in yellow. Above the banner, there are three circular icons: a camera, a menu, and a back arrow. The background is a light, overcast sky.

GOT KNOTWEED?

the
Southeast Alaska Watershed Coalition
can help

What will be the state of Alaska's natural resources in 20 years?



Tim Stallard
Alien Species Control, LLC
Weeds.free.ak@gmail.com
907.347.2214