
DEPARTMENT OF CORRECTIONS DIVISION OF HEALTH & REHABILITATION

SENATE CORRECTIONS FINANCE SUBCOMMITTEE

FEBRUARY 23, 2021





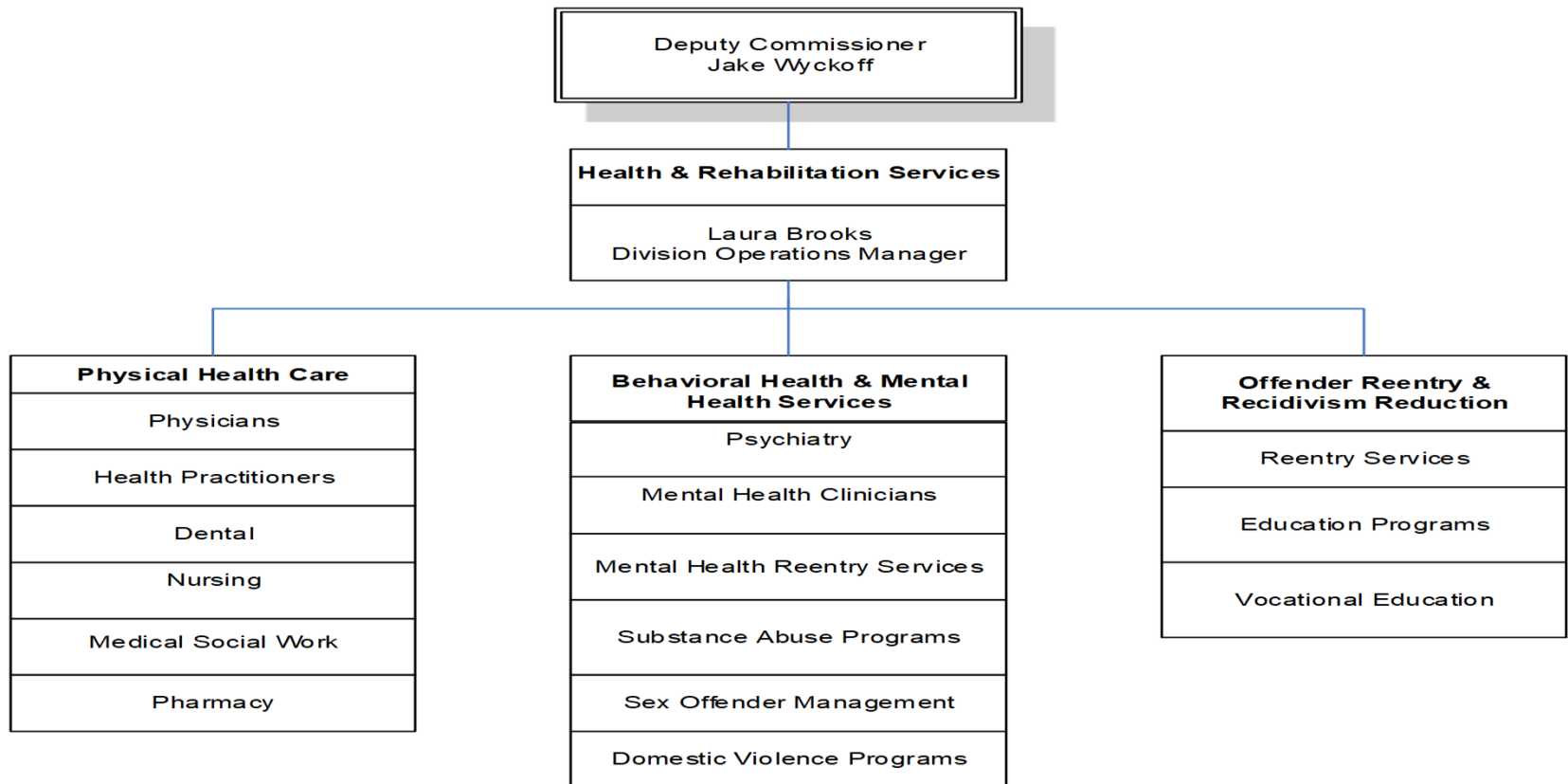
HEALTH & REHABILITATION SERVICES (HARS)

Health & Rehabilitation Services (HARS) has constitutional and statutory obligations to provide health care to offenders who are placed in the custody of the Alaska Department of Corrections.

**Eight Amendment, United States Constitution
Article I, Section 12, Alaska Constitution
AS 33.30.011**



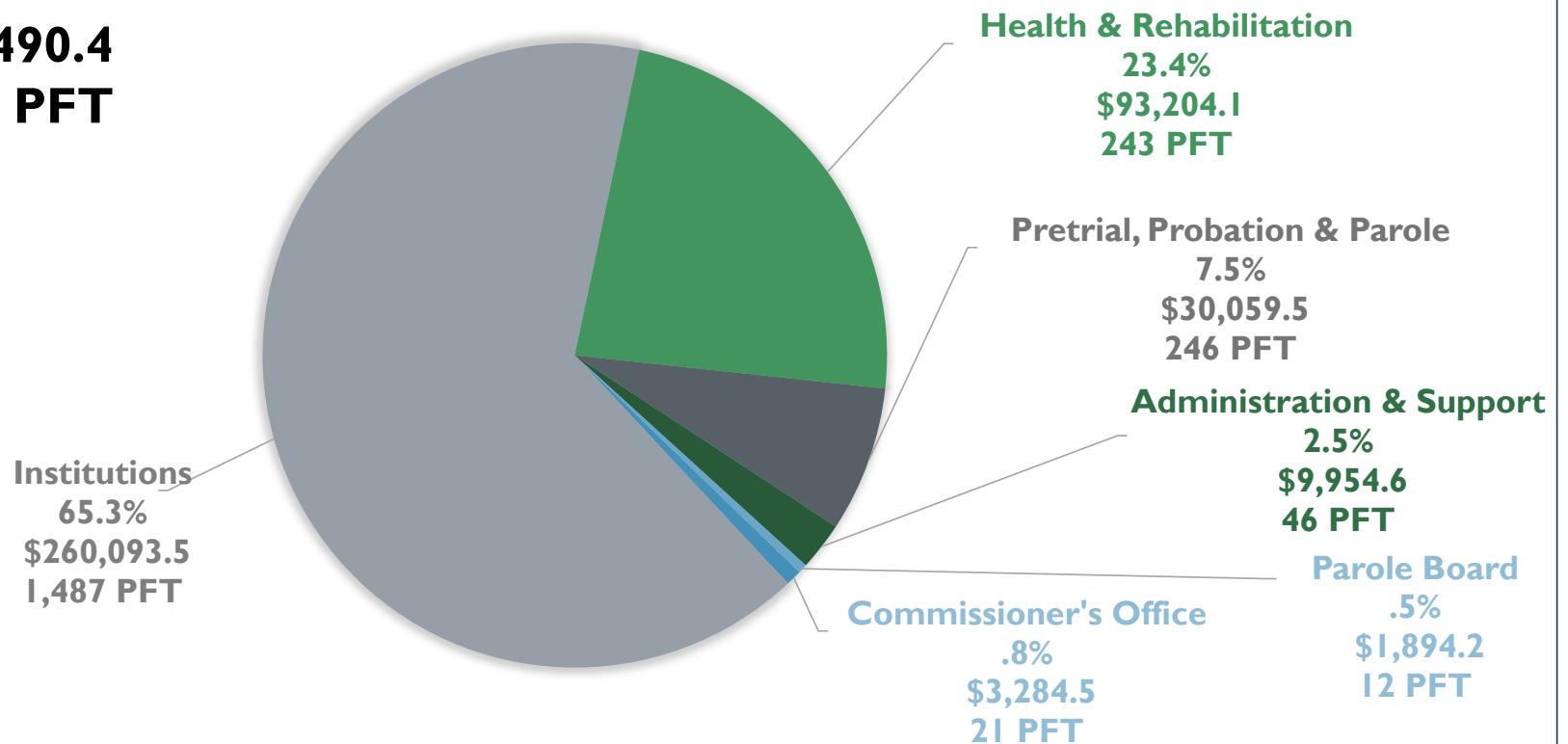
ORGANIZATIONAL STRUCTURE





FY2022 OPERATING BUDGET REQUEST BY DIVISION

Total \$398,490.4
2,055 PFT



**All \$\$ in thousands*



DIVISION OF HEALTH & REHABILITATION SERVICES

- Health & Rehabilitation Director's Office
 - \$1,022.5 / 8 PFT
- Physical Health Care
 - \$69,363.2 / 166 PFT
- Behavioral Health Care
 - \$10,136.0 / 53 PFT
- Substance Abuse
 - \$5,667.0 / 3 PFT
- Sex Offender Management
 - \$3,002.2 / 4 PFT
- Domestic Violence Program
 - \$175.0 / 0 PFT
- Reentry & Recidivism Unit
 - \$2,257.4 / 6 PFT
- Education/Vocational Programs
 - \$1,580.8 / 3 PFT

TOTAL	\$93,204.1
UGF	\$77,176.4
DGF	\$6,286.1
Other	\$8,601.6
Federal	\$1,140.0

Budgeted Positions	243 PFT
---------------------------	----------------

FY2022 Significant Budget Changes

- Restore six medical positions and funding to meet Palmer Correctional Center staffing needs.

All \$\$ in thousands



DIVISION OF HEALTH & REHABILITATION SERVICES

- **Mission:** To provide essential care and rehabilitation and reentry services through an evidence-based, multidisciplinary approach to offenders who are committed to the custody of the department.

Accomplishments:

- The division deployed a department-wide COVID-19 response plan in March 2020.
- Opened a full-service dialysis clinic inside DOC in January 2020.
- Completed the design and began construction on a new collaborative care unit for women at Hiland Mountain.
- Established the Reentry Unit.

Challenges:

- The rising cost of health care due to an aging offender population, increased chronic health conditions and increased medical needs due to complex substance abuse issues.
- Mentally ill offenders are coming into the department's custody in worse shape than ever before.
- Lack of sex offender and substance abuse treatment providers.



COVID-19

- Developed a systemwide COVID-19 response plan.
- Activated a DOC Infectious Disease Response Team.
- Established a detailed clinical care guide for COVID-19.
- Developed and distributed education materials for inmates and staff.
- Developed protocols and coordinated the acquisition of personal protection equipment.
- Developed screening protocols for all individuals entering DOC facilities and offices.
- Implemented standardized isolation and quarantine strategies.
- Implemented broad-based COVID testing strategies.
- Held tabletop exercises for each facility in anticipation of outbreaks.
- Facilitated multi-agency response plan meetings for each outbreak.
- Held regular town hall meetings for department staff.
- Managed outbreaks in multiple facilities and CRC's.
- Began treating qualifying inmates with monoclonal antibody treatment as soon as it became available.
- Coordinating mass vaccination distribution efforts for inmates and staff.
- Coordinating re-opening plan.



COVID-19

Total Positives by Facility	
Facility	Positives
Anchorage Corr Complex	507
Anvil Mountain Corr Cntr	4
Fairbanks Corr Cntr	153
Goose Creek Corr Cntr	1,040
Hiland Mountain Corr Cntr	235
Ketchikan Corr Cntr	1
Lemon Creek Corr Cntr	19
Mat-Su Corr Cntr	68
Palmer Corr Cntr	0
Point MacKenzie Corr Farm	0
Spring Creek Corr Cntr	7
Wildwood Corr Cntr	43
Yukon-Kuskokwim Corr Cntr	185
Clithrow (Anchorage)	3
Cordova (Anchorage)	1
Parkview (Anchorage)	17
Midtown (Anchorage)	0
Tundra Center (Bethel)	17
Northstar Center (Fairbanks)	16
Glacier Manor (Juneau)	0
Seaside (Nome)	0
Total	2,316

Testing Totals	
Negative	20,787
P - Intake	179
P - General Pop	2,081
P - CRC/Furlough	53
P - Repeat	312
P - Re-Infection	3
Pending	79
Invalid	234
Number of Tests	23,728

Covid Deaths **5**
Hospitalizations **21**

Vaccinations



COVID-19

■ Lessons Learned

- Staff resiliency.
- Infectious disease protocols in place going forward.
- Improved inter-departmental collaboration.
- Importance of access to technology.

■ Biggest Challenges

- Space for quarantine and isolation.
- Deficiencies in the electronic health record.
- Delivery of group activities.
- Access to inmate population.



PHYSICAL HEALTH CARE

HARS Medical & Mental Health Staffing and Specialty Units

■ Anchorage Correctional Complex

- DOC medical providers
- 24-hour nursing coverage
- 12-bed infirmary
- Visiting dentist
- DOC mental health clinicians
- DOC psychiatrist
- 28-bed acute psychiatric unit
- 36-bed subacute psychiatric unit

■ Goose Creek Correctional Center

- DOC medical providers
- 24-hour nursing coverage
- 16-bed infirmary
- On-site dentist
- DOC mental health clinicians
- 128-bed subacute psychiatric unit
- 4-chair dialysis clinic

■ Hiland Mountain Correctional Center

- DOC medical provider
- 24-hour nursing coverage
- Visiting dentist
- DOC mental health clinicians
- DOC psychiatrist
- 18-bed acute psychiatric unit
- 40-bed subacute psychiatric unit

■ Spring Creek Correctional Center

- DOC medical provider
- 20-hour nursing coverage
- Visiting dentist
- DOC mental health clinicians
- 48-bed subacute psychiatric unit
- 7-bed mental health transition cells
- Telepsychiatry



PHYSICAL HEALTH CARE

■ Wildwood Correctional Center

- DOC medical provider
- 24-hour nursing coverage
- Visiting dentist
- DOC mental health clinicians
- Telepsychiatry

■ Fairbanks Correctional Center

- DOC medical providers
- 24-hour nursing coverage
- Contract dentist
- DOC mental health clinicians
- Telepsychiatry

■ Lemon Creek Correctional Center

- Contract medical provider
- 24-hour nursing coverage
- Visiting dentist
- DOC mental health clinicians
- Telepsychiatry

■ Mat-Su Pretrial Facility

- DOC medical provider
- 22-hour nursing coverage
- Visiting dentist
- Contract mental health clinicians
- Telepsychiatry

■ Yukon-Kuskokwim Correctional Center

- Visiting medical provider
- 11-hour nursing coverage
- Telepsychiatry

■ Anvil Mountain Correctional Center

- Contract medical provider
- 11-hour nursing coverage
- Contract dentist
- Contract mental health clinicians
- Telepsychiatry

■ Ketchikan Correctional Center

- Contract medical provider
- 11-hour nursing coverage
- Contract mental health clinicians
- Telepsychiatry



PHYSICAL HEALTH CARE

What DOC Pays For:

- In-house services provided by DOC staff
- Outpatient procedures
- Emergency room visits
- Ambulance transports
- In-house specialty services
- Labs, CT scans, MRIs and x-rays, mammograms, ultrasounds
- Medications
- Medical equipment and supplies

What DOC Does Not Pay For:

- Hospitalizations of 24 hours or more if Medicaid eligible
- Injuries covered by Worker's Compensation (CRC placements or work furloughs)
- CRC medical care if offender applies and is eligible for Medicaid
- Outside medical care for someone with private insurance



PHYSICAL HEALTH CARE

Exceptionally Ill and Complex Inmate Patient Population

- 22 percent are Hepatitis C positive
- 25-30 percent have high blood pressure
- 78 percent are overweight, obese, or morbidly obese
- 80 percent have a substance use disorder
- Up to 75 percent of female prisoners report having been sexually victimized
- 65 percent report traumatic brain injury (TBI)
 - 16 percent report moderate to severe TBI
- 65 percent have a mental illness
- 22 percent experience a severe and persistent mental illness
- Prisons are impacted by the high number of inmates with dementia (one in 10 over age 65) and other conditions related to the aging process



PHYSICAL HEALTH CARE

Cost Containment Efforts

- Utilization Review Committee
- Telehealth
- In-house infirmaries
- Early identification and release of high-cost cases
- Aggressive contract negotiations (10-55 percent)
- Preferred provider agreements (10-30 percent)
- Medicaid coverage
- Adjudication Company
- Pharmacy pricing programs
- Expanding in-house services



MENTAL HEALTH SERVICES

- Psychiatrists (on-site & via telepsychiatry)
- Psychiatric nurse practitioners
- Masters level mental health clinicians
- Psychiatric nurses
- Contract providers



MENTAL HEALTH SERVICES

Suicide
Prevention

Group &
Individual
Counseling

In-Patient
Treatment Units

Medication
Management

Dual Diagnosis
Treatment

Title 47
Management

Intensive
Reentry Planning

Trauma
Informed Care

Mental Health
First Aid

Crisis
Intervention
Teams



SUBSTANCE ABUSE TREATMENT

Screening

Assessment

Psycho-education

Intensive
Outpatient
Treatment
(IOPSAT)

Residential
Treatment
(RSAT)

Medication
Assisted
Treatment (MAT)

AA/NA

Video-Based
Substance Abuse
Education

CRC Direct
Access to
Treatment

Prevention
Services



SUBSTANCE ABUSE TREATMENT

Program	Location	Capacity	Length
RSAT	Hiland Mtn	24	6 months
RSAT	Wildwood	40	6 months
IOPSAT	Hiland Mtn	15	15 weeks
IOPSAT	Goose Creek	105	15 weeks
IOPSAT	Anvil Mtn	10	15 weeks
IOPSAT	Anchorage CRCs	24	15 weeks
IOPSAT	Nome CRC	10	15 weeks
IOPSAT	Fairbanks CRC	24	15 weeks
Dual Diagnosis	Anchorage Correctional	10	20 weeks
Dual Diagnosis	Hiland Mtn	10	20 weeks
Dual Diagnosis	Goose Creek	10	20 weeks
Psych Ed	Anchorage Correctional	30	Open
PsychEd	Goose Creek	30	Open
PsychEd	Hiland Mtn	30	Open
PsychEd	Wildwood	30	Open
PsychEd	Anvil Mtn	30	Open
PsychEd	Yukon Kuskokwim CC	30	Open



SEX OFFENDER MANAGEMENT

Institutional Sex
Offender
Treatment

Community Sex
Offender
Treatment

Telehealth
Treatment

Containment
Model

Safety Nets

Specially Trained
Probation
Officers



SEX OFFENDER MANAGEMENT

Program	Location	Capacity	Length
Residential	Lemon Creek	24	24-36 months
Outpatient	Hiland Mtn	12	18-24 months
Outpatient	Wildwood	36	18-24 months
Outpatient	GCCC	36	18-24 months
Outpatient	Anvil Mtn	10	18-24 months
Outpatient	Bethel CRC	15	18-24 months
Teletreatment	Statewide	24	18-24 months
Community	Anchorage	varies	18-24 months
Community	Fairbanks	varies	18-24 months
Community	Juneau	varies	18-24 months
Community	Kenai	varies	18-24 months
Community	Bethel	varies	18-24 months
Community	Nome	varies	18-24 months



PRISON-BASED DOMESTIC VIOLENCE PROGRAMS

Goose Creek
Correctional
Center

Lemon Creek
Correctional
Center

Fairbanks
Correctional
Center

Palmer
Correctional
Center



EDUCATION PROGRAMS

Education
Coordinators

Placement Testing

Computer Literacy

GED Testing,
Tutoring &
Certification

New Path High
School

Job Readiness Skills

English as a Second
Language (ESL)

Parenting

Correspondence
Courses



VOCATIONAL PROGRAMS

Plumbing,
Electrical &
Carpentry

Culinary Arts

Food Handler &
Serve Safe

Small Engine
Repair

Barista Training

Welding

Building
Maintenance

Barber School

CAREERS
Grant



REENTRY SERVICES

Offender
Management
Plans

Risk/Needs
Assessment

Second Chance
Act Grant

Returning Home
Program

Mental Health
Release
Programs

Reentry
Coalitions

Community
In-Reach

Peer Support

Medical Social
Work

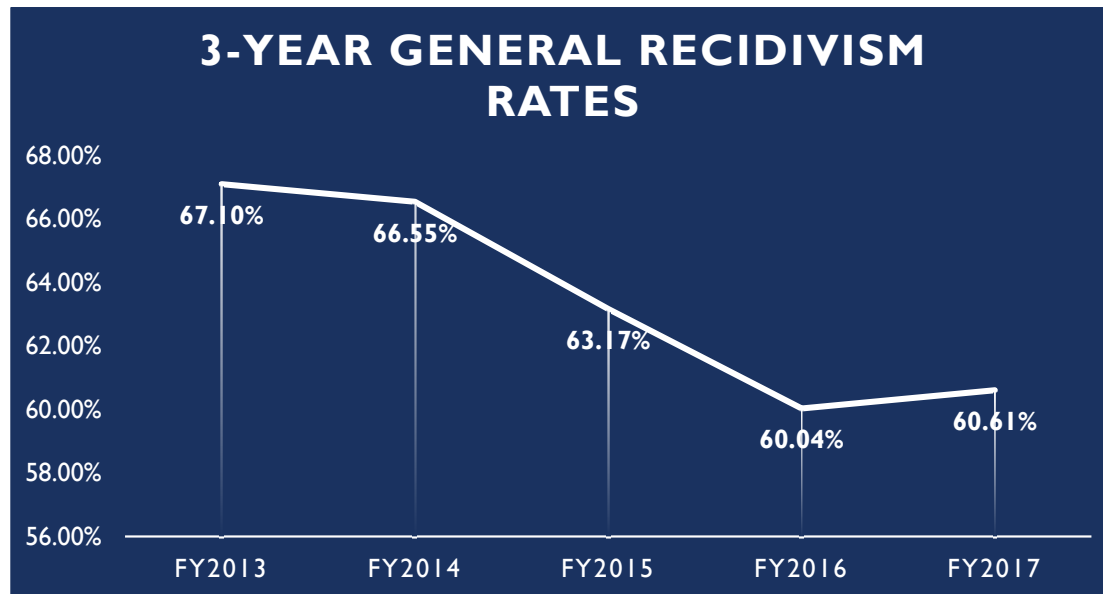
DOLWD &
DEED
Partnerships

Reentry Centers

Halfway Houses
(CRCs)



RECIDIVISM





Thank You