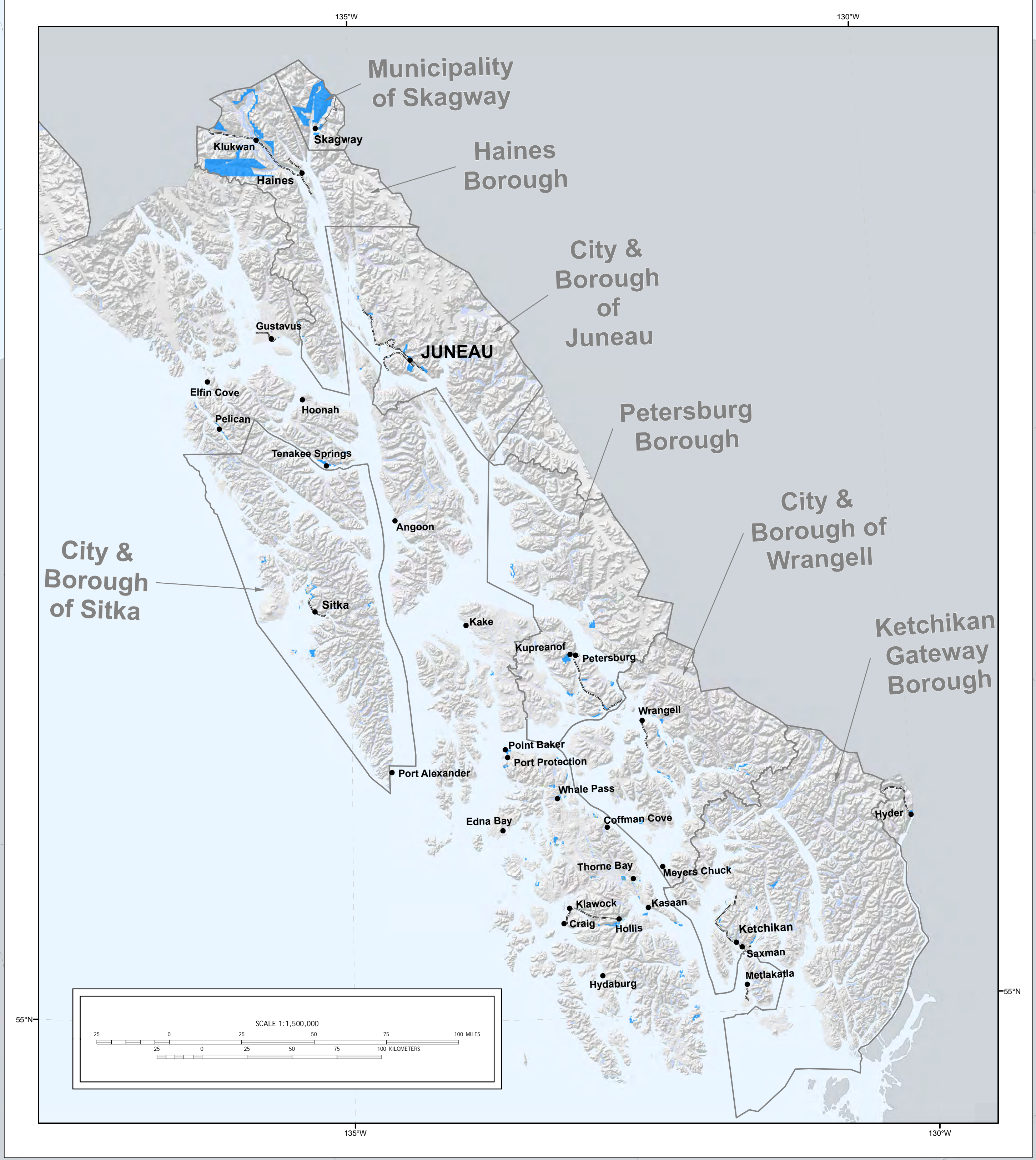
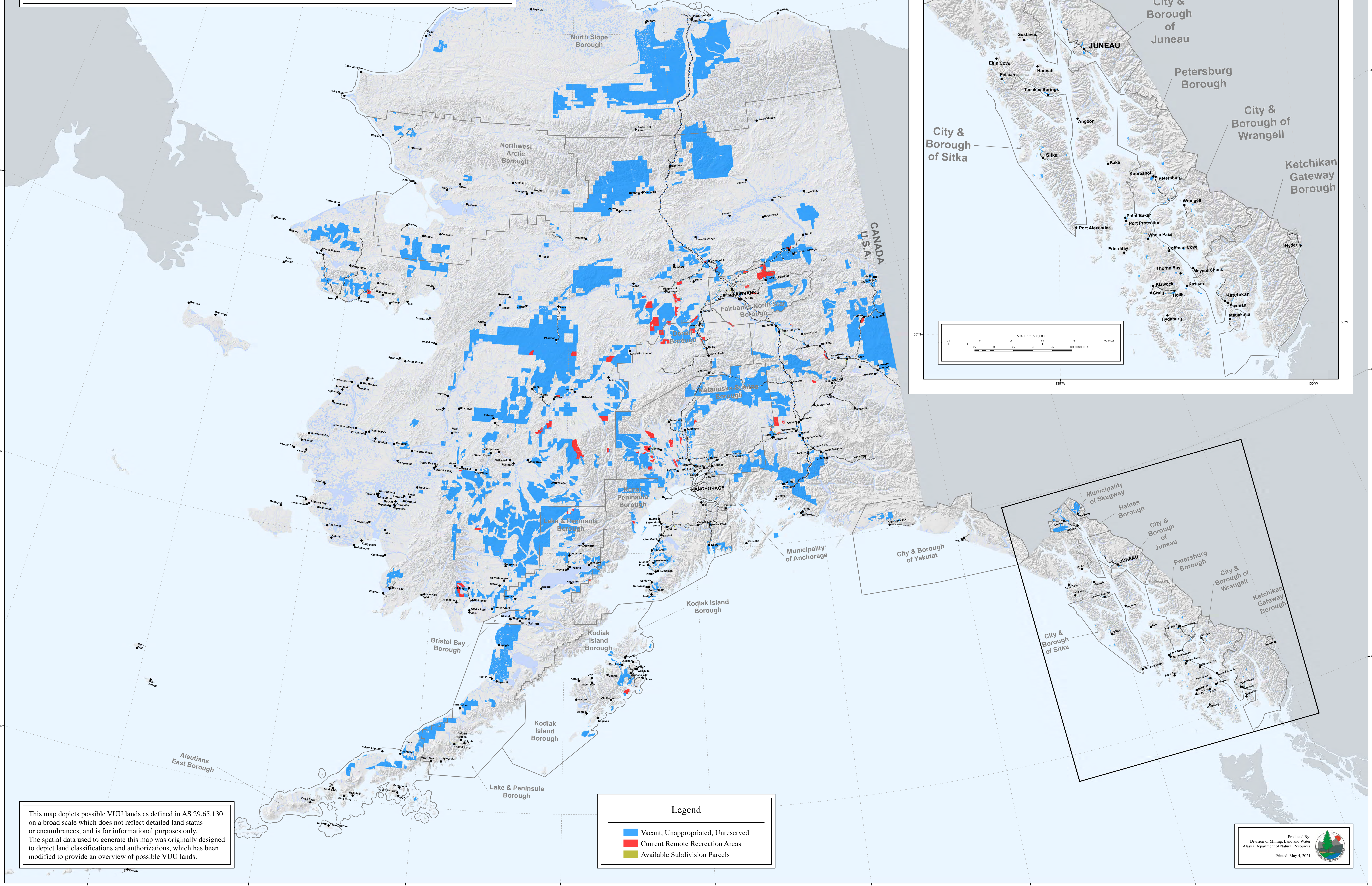
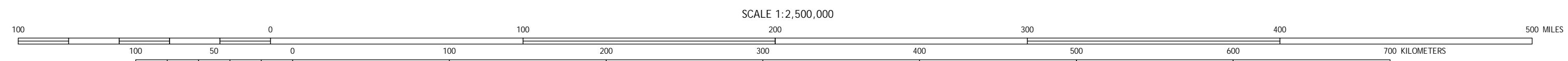


STATE OF ALASKA
Vacant, Unappropriated, Unreserved Lands
 As Defined in AS 29.65.130
 May 2021
 Map Projection: Albers Equal Area



This map depicts possible VUU lands as defined in AS 29.65.130 on a broad scale which does not reflect detailed land status or encumbrances, and is for informational purposes only. The spatial data used to generate this map was originally designed to depict land classifications and authorizations, which has been modified to provide an overview of possible VUU lands.

Legend

- Vacant, Unappropriated, Unreserved
- Current Remote Recreation Areas
- Available Subdivision Parcels