



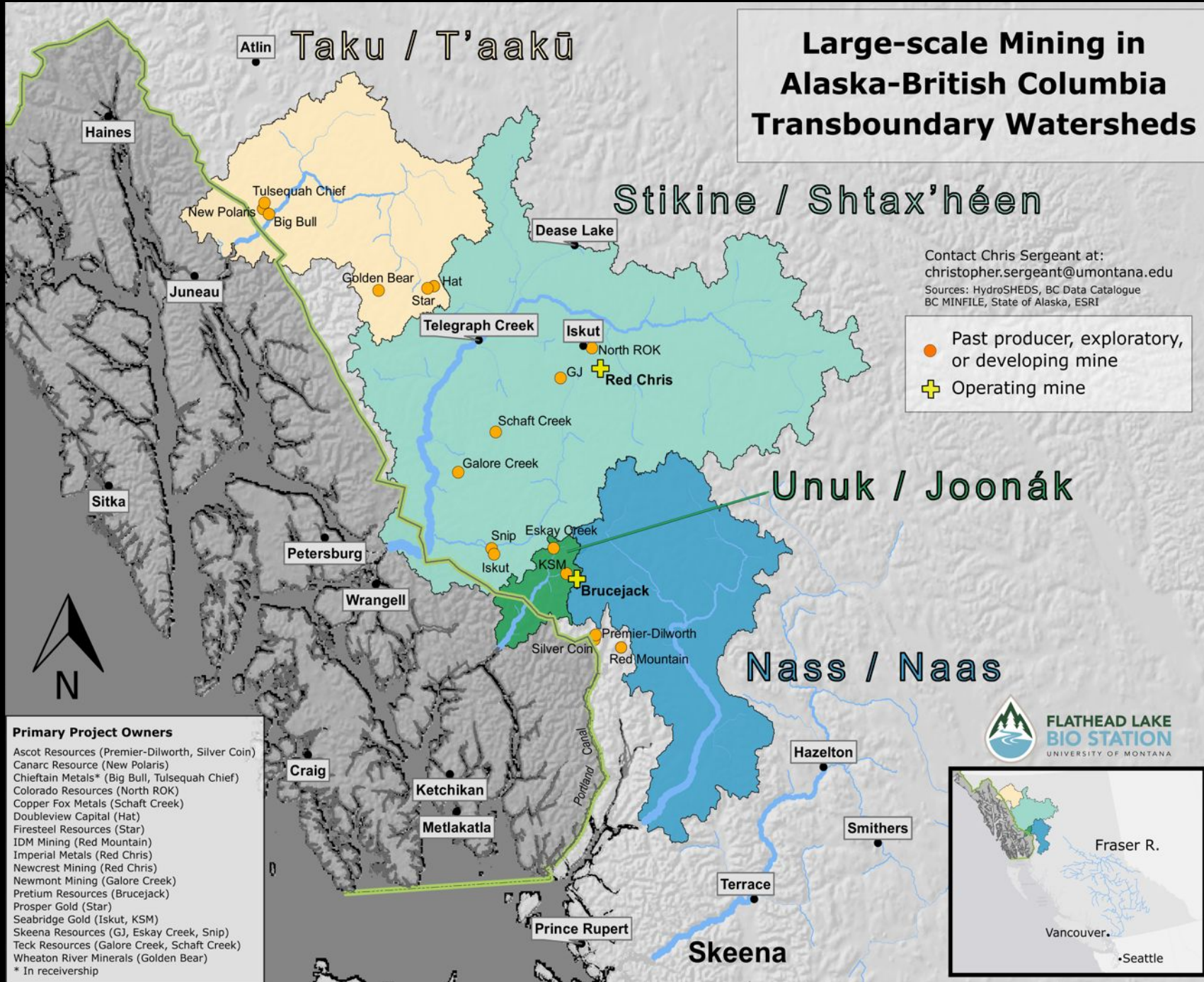
SALMON BEYOND BORDERS

Defending our rivers, jobs, and way of life.



Breanna Walker
Campaign Coordinator

Large-scale Mining in Alaska-British Columbia Transboundary Watersheds



Contact Chris Sergeant at:
christopher.sergeant@umontana.edu
Sources: HydroSHEDS, BC Data Catalogue
BC MINFILE, State of Alaska, ESRI

- Past producer, exploratory, or developing mine
- ✚ Operating mine

- Primary Project Owners**
- Ascot Resources (Premier-Dilworth, Silver Coin)
 - Canarc Resource (New Polaris)
 - Chieftain Metals* (Big Bull, Tulsequah Chief)
 - Colorado Resources (North ROK)
 - Copper Fox Metals (Schaft Creek)
 - Doubleview Capital (Hat)
 - Firesteel Resources (Star)
 - IDM Mining (Red Mountain)
 - Imperial Metals (Red Chris)
 - Newcrest Mining (Red Chris)
 - Newmont Mining (Galore Creek)
 - Pretium Resources (Brucejack)
 - Prosper Gold (Star)
 - Seabridge Gold (Iskut, KSM)
 - Skeena Resources (GJ, Eskay Creek, Snip)
 - Teck Resources (Galore Creek, Schaft Creek)
 - Wheaton River Minerals (Golden Bear)
- * In receivership

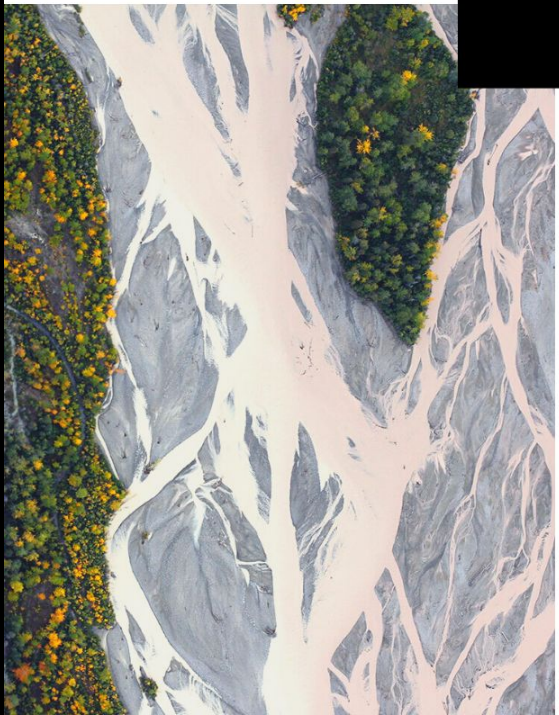
- Three transboundary watersheds: 30k sq. miles
- \$1 Billion: Regional Commercial Fishing and Visitor Industry
- Produce 80 % of our Chinook salmon
- B.C. has more than 12 large-scale open-pit projects near AK-BC headwaters






TAKU - STIKINE - UNUK

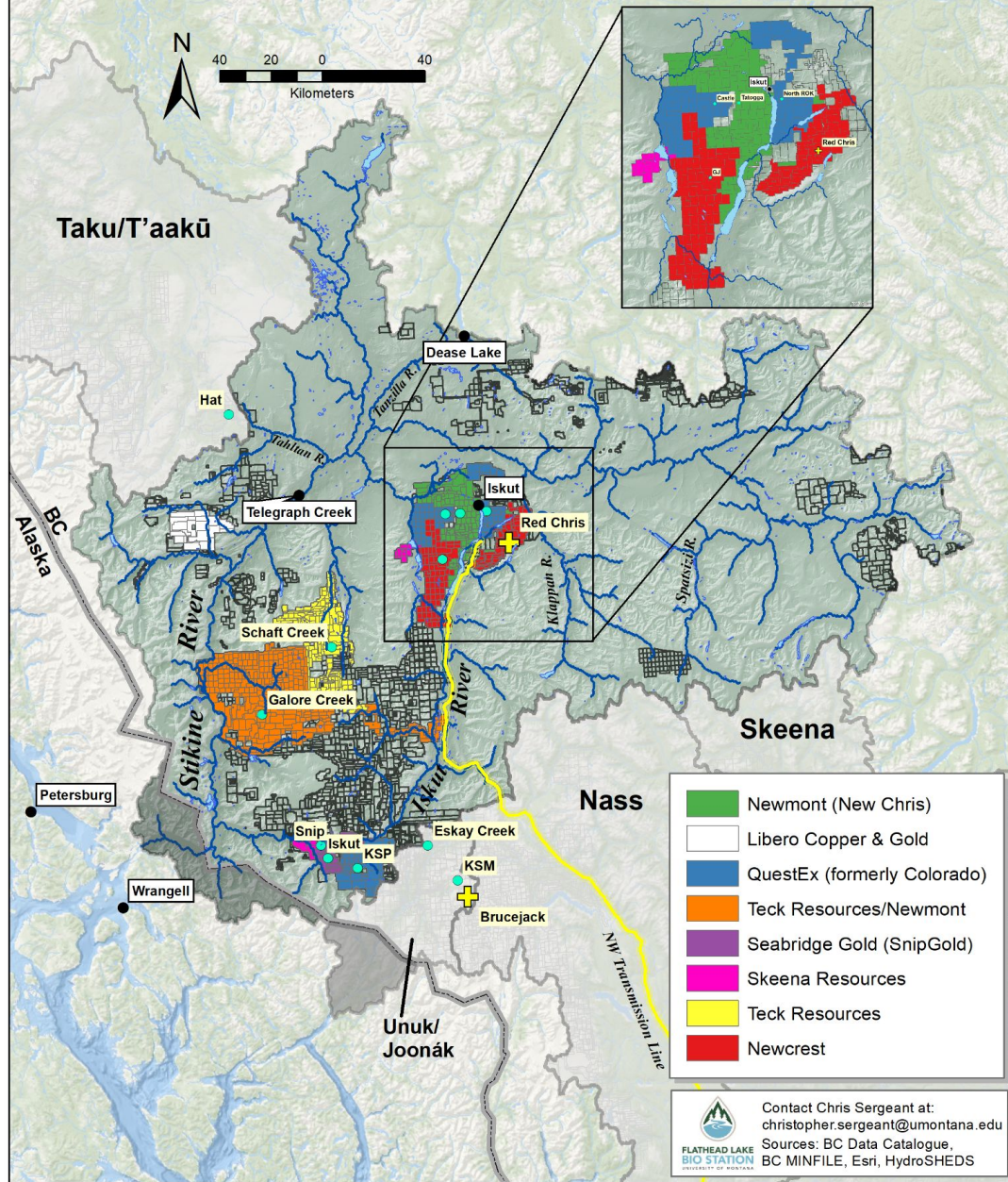
THE RIVERS THAT FEED US



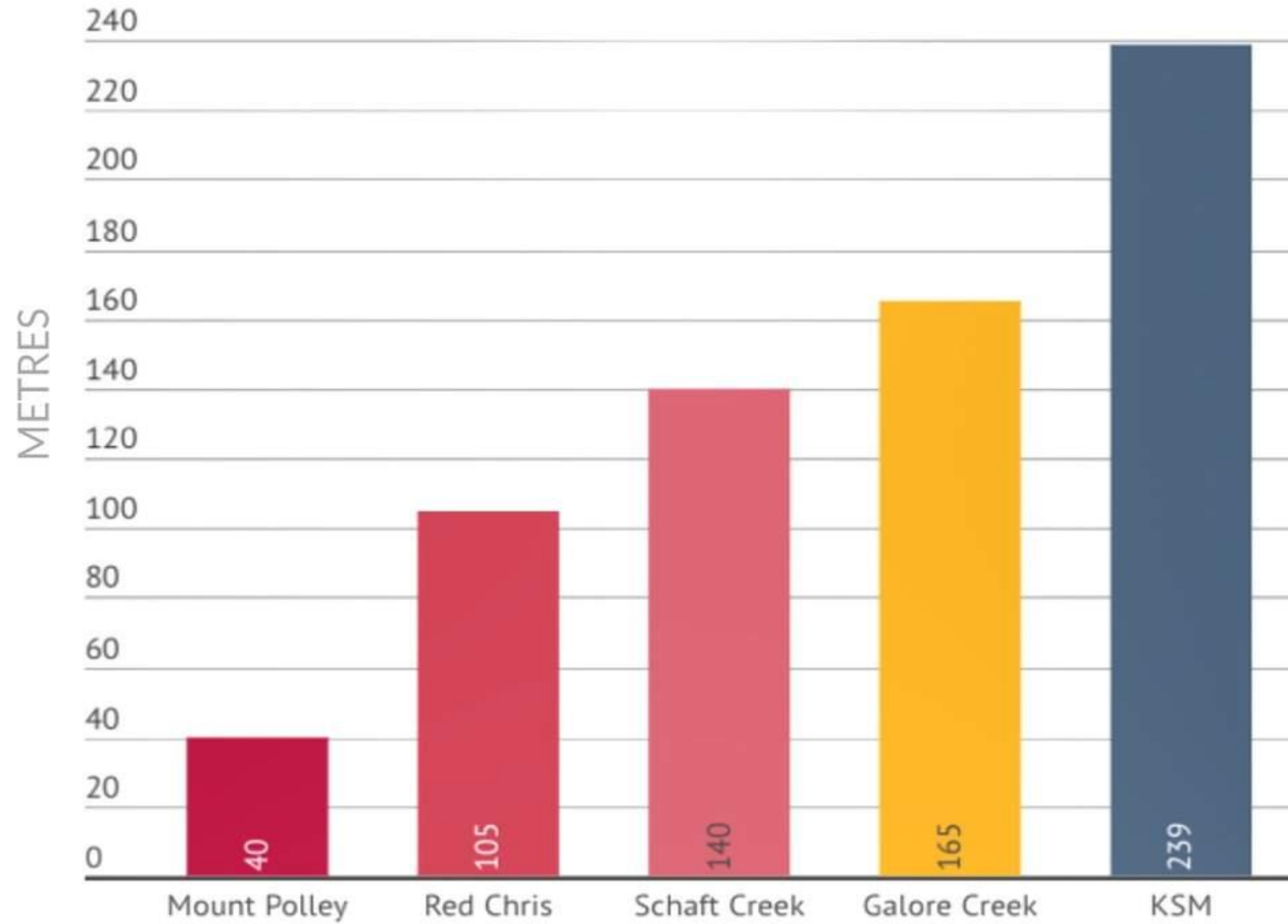
A close-up underwater photograph of a wild king salmon swimming towards the left. The fish has a large, silver, metallic fishing lure with long, thin, white streamers and a red body in its mouth. The water is a clear, greenish-blue color. The fish's scales are visible, and its eye is focused on the lure.

80% of the wild king
salmon produced in
Southeast Alaska come
from the Taku, Stikine,
and Unuk rivers

Major BC Mines, Claims, and Companies in the Stikine/Shtax'héen Watershed



Transboundary Mine Tailings Dam Heights in relation to Mount Polley





TAKU - STIKINE - UNUK

THE RIVERS THAT FEED US

