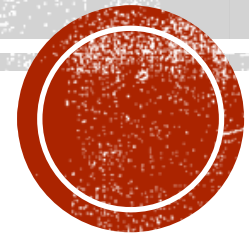


INTRO TO VEGETATION MANAGEMENT

Senate Resources Committee – April 26, 2021



Travis Million, CEO - CVEA

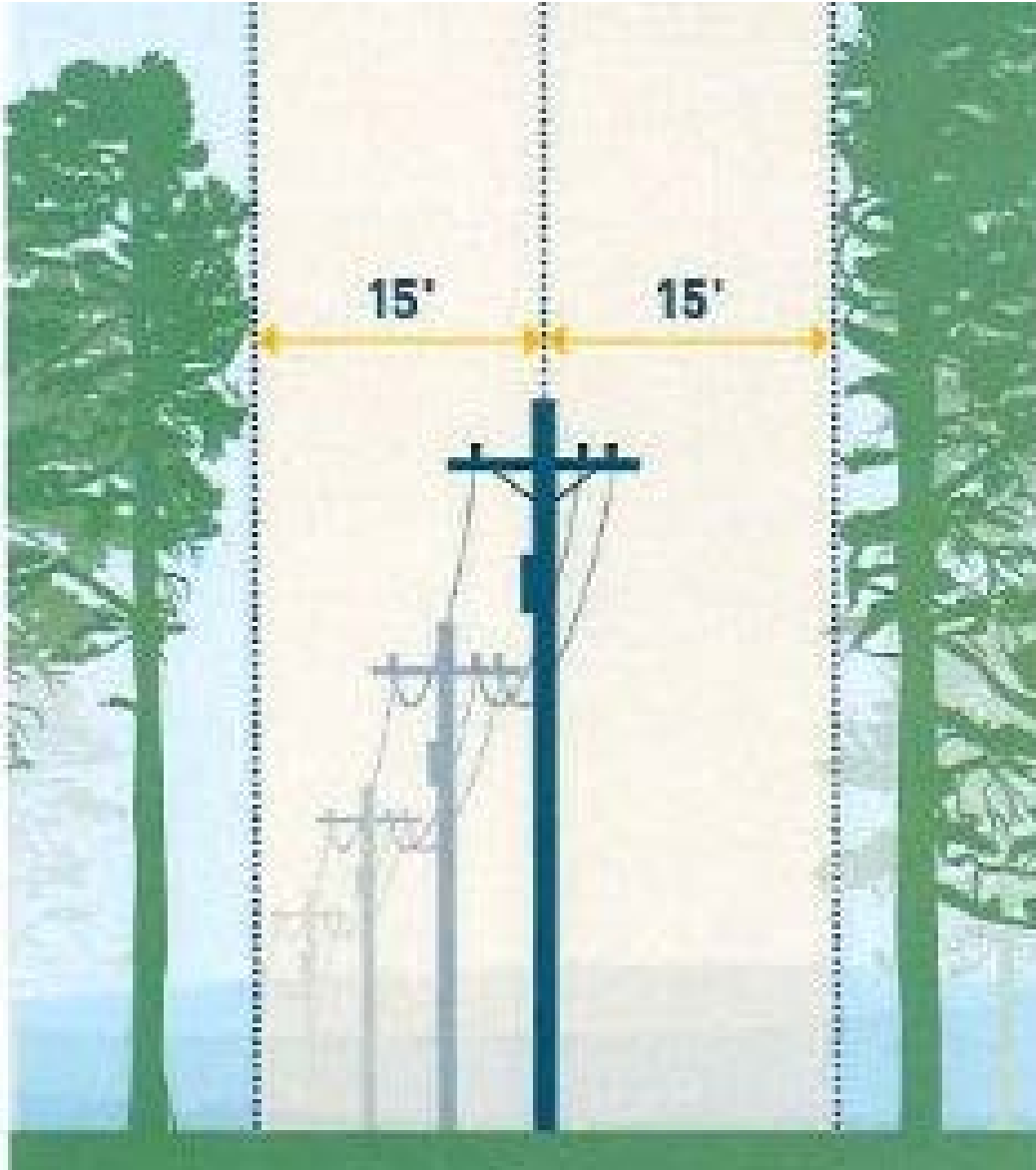


Utilities legal obligation

Provide reliable electric service

Ensure safety to the public

Prevention of utility caused wildfires



RIGHTS OF WAY

- The legal right, established by usage or grant, to pass along a specific route through grounds or property belonging to another.
- Utility specific
 - Distribution
 - Three-phase typically 30 feet (15 feet from the pole)
 - Single-phase typically 20 feet (10 feet from the pole)
 - Transmission
 - Typically 100 feet (50 feet from center line or pole)





CLEARING METHODS





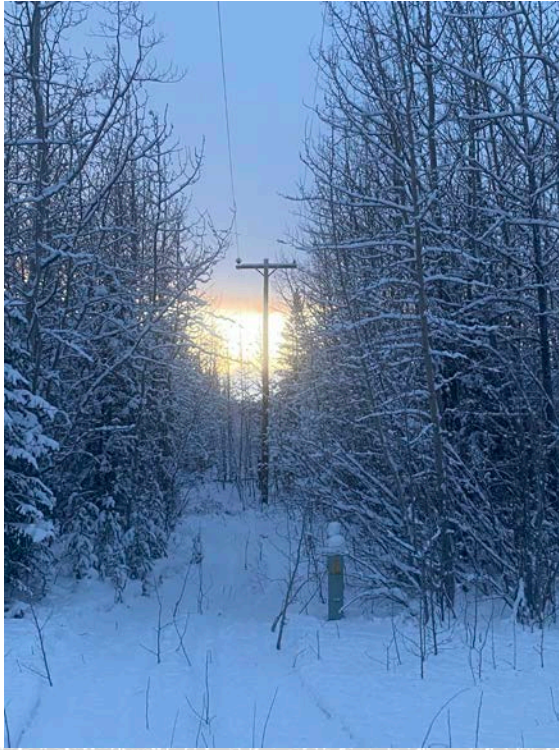
CLEARING METHODS

CLEARING



100-foot Transmission ROW





CLEARING BEFORE / AFTER

- Distribution Right of Way





**RIGHT OF WAY CLEARING
COMPLETE**

