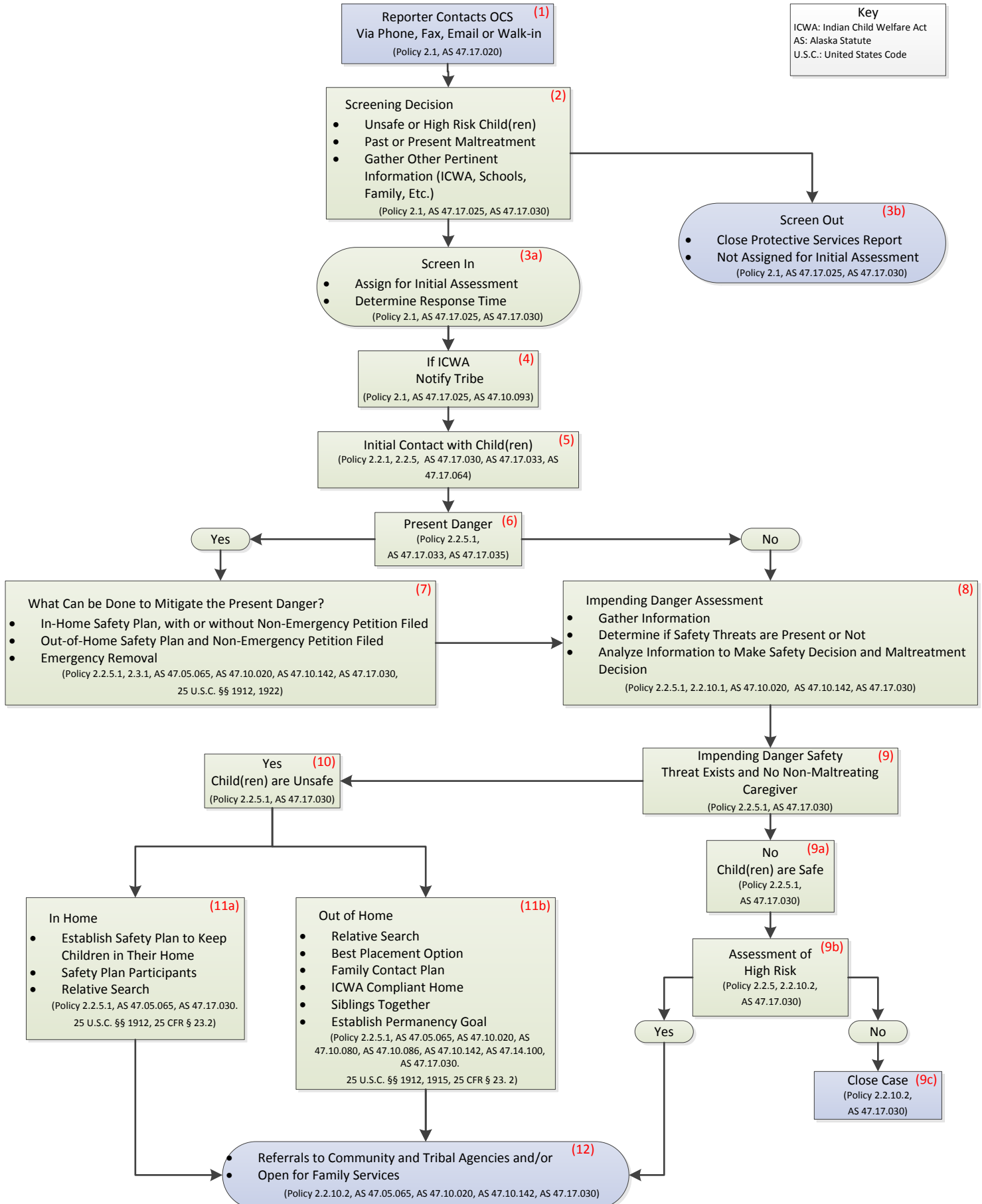


# Office of Children's Services Case Flowchart Intake and Initial Assessment

**Key**  
ICWA: Indian Child Welfare Act  
AS: Alaska Statute  
U.S.C.: United States Code

Relative Search



# Office of Children's Services Case Flowchart

## Family Services

**Key**  
 ICWA: Indian Child Welfare Act  
 APPLA: Another Permanent Plan Living Arrangement  
 AS: Alaska Statute  
 U.S.C.: United States Code  
 CFR: Code of Federal Regulations

Relative Search and Family Contact

