



Providing a Safe Smart Start for Alaska Public Schools

2020-2021 District Plans
House Education Committee
July 23, 2020

The AASA COVID-19 Recovery Task Force Guidelines for Reopening Schools: An opportunity to Transform Public Education

1. Plan for Multiple Reopening Scenarios and Contingencies to Ensure the Health, Safety and Well-Being of All Students and Staff
2. Build a COVID-19-Response Reopening Infrastructure Aligned with Changing Scenarios and Needs
3. Ensure Students' and Families' Equitable Access to Technology Required for Virtual Learning
4. Provide Continuing Support to Students and Adults to Address Their Immediate and Long-Term Physical, Psychological, Social and Emotional Needs
5. Ensure All Schools Are Trauma-Informed and Trauma-Skilled
6. Prepare for COVID-19-Related Changes in Human Resource Management and Practices
7. Offer Ongoing Personalized and Differentiated Professional Learning
8. Transform the Teaching-Learning-Assessment Process to Ensure Personalization, Engagement and Differentiation
9. Anticipate COVID-19-Related Budget and Fiscal Management Issues
10. Embrace a New Paradigm for Public Education



Alaska Superintendents Association/
Alaska Council of School
Administrators

Executive Director

Dr. Lisa S. Parady

serves on the AASA COVID-19
Recovery Task Force





ASA Superintendent
of the Year
2020
Kerry Boyd



Yukon-Koyukuk School District



Scheduling: Opening Green with Caution



Safety and Health:

- Delayed School Opening: Training and Safety
- Small Cohort of Classes (8-10 students)
- Health Screening & Social Distancing
- No Travel to Minimize Spread
- Limited Gatherings to Essential
- Transportation

Physical/Blended/Remote:

- 1:1 Technology
- Limited Village Internet Infrastructure
- Digital vs. Paper Packets

Cares Act Funding:

- Personal Protective Equipment
- Staff Resources & Individual Student Supplies
- Internet Infrastructure for Communities
- Staff Quarantine Costs

Yukon-Koyukuk School District Smart Start 2020

Yukon-Koyukuk School District

2019 School Population

Allakaket	22
Hughes	17
Huslia	85
Koyukuk	16
Kaltag	20
Minto	44
Nulato	44
Rampart	13
Ruby	23

Subtotal River 284

Current Raven
Homeschool 2189

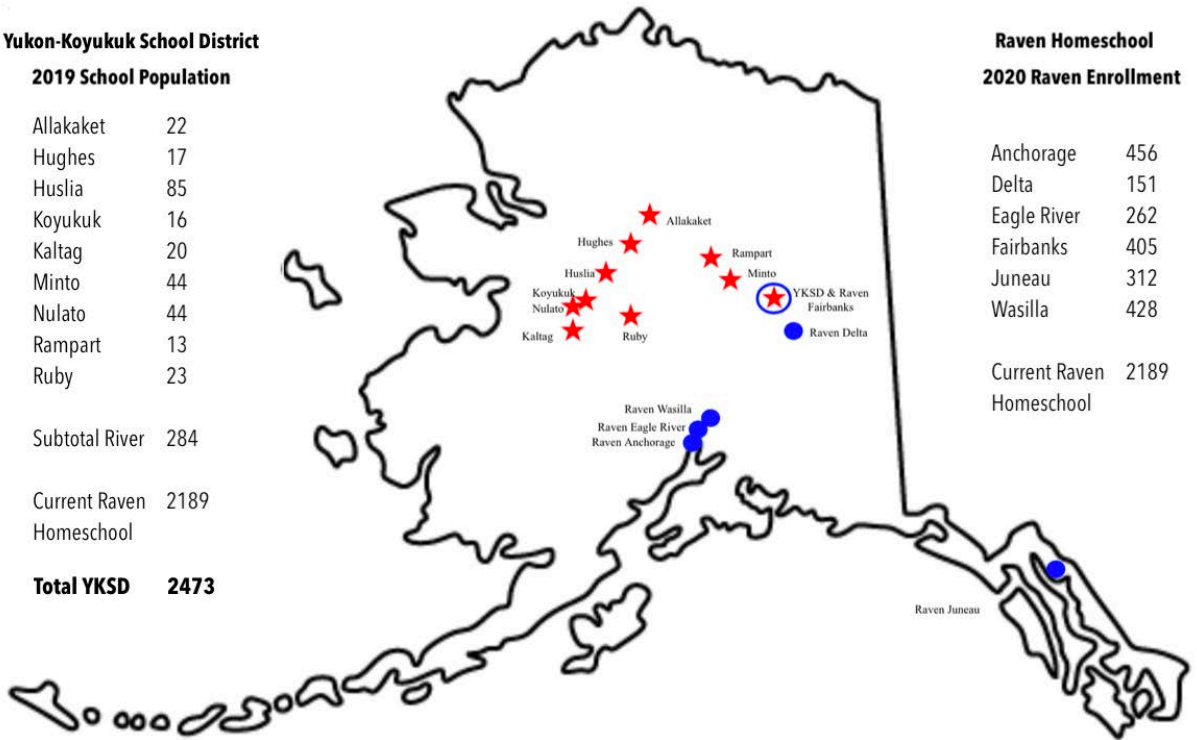
Total YKSD 2473

Raven Homeschool

2020 Raven Enrollment

Anchorage	456
Delta	151
Eagle River	262
Fairbanks	405
Juneau	312
Wasilla	428

Current Raven
Homeschool 2189



- Nine remote villages
- Six Raven Homeschool Offices Statewide

***16 Smart Start Plans**





Yukon-Koyukuk School District Smart Start 2020



Low Risk



Medium Risk



High Risk

Childcare:

- Families and Staff
- Homeschool

Special Needs Students:

- Students with Intensive Needs
- Individualized Lessons at Home

Loss of Learning:

- Assessment Plan & Data
- Reading, Writing, and Math

Other Challenges:

- Village COVID Travel Restrictions
 - Quarantine and Approval for Travel
- YKSD has no School Nurses
 - Limited Health Aides
- Mental Health & Social Emotional Learning
 - Trauma Informed Schools and ACEs

Strengths:

- TCC Partnership
- Village and School Board Leadership





Superintendent
John Conwell



Unalaska City School District



Unalaska City School District

Plans developed with guidance from:

- Federal, state and local health and educational agencies
- City Risk Manager and local Emergency Operations Center
- Survey responses from UCSD families

Unified Incident Command Structure

Formed at the inception of the pandemic, this team met daily through the initial phase of the crisis and created a unified voice for local leaders that community members now look to for guidance.

Plans are EVOLVING

The plan will continue to evolve up to and after the first official day of school on August 19. The overarching goal of the plan is to provide in-person PK-12 education while protecting the health of employees, students and the community at large.



Unalaska City School District

▲ August 12-15
Professional development
devoted to training in
Smart Start Plan
implementation.

▲ Aug. 19-21
“soft-opening” whereby
only 2 classes per half
day will attend to meet
teachers and learn new
Smart Start routines.

Low/Medium Risk Protocol Measures:

- **Social distancing:** 6 ft. spacing, plexiglass dividers,
- **Face coverings:** School buses, hallways, locker rooms and anywhere 6 ft distance isn't possible
- **Personal hygiene:** Proper handwashing measures
- **Temperature and health screenings:**
Family “care kits”
- **Visitors:** Face masks, social distancing, secured access
- **Recess:** Encouraged outdoor recreation
- **Social Emotional Learning/Mental Health:** instruction incorporated daily when feasible
- **Training for personnel** devoted to Smart Start
- **Training for students** first days devoted to Smart Start education
- **Remote Education** an option for families



Unalaska City School District

▲ If the Emergency Operations Center elevates local risk to **HIGH**, schools would need to pivot to home-based education much like last spring.

Our current planning includes the implementation of measures that would seek to improve on the home-based learning experience from last spring.

High Risk Protocol Measures:

- **Home-based education for all students**
- **Adoption of standardized learning platforms** for online, district supported for K-4 and 5-12.
- **Transitioning to a hybrid 1:1** computer device program
- **Offer Alaska Statewide Virtual System** as a distance learning option
- **Maintain a daily class schedule** with limited flexibility for special circumstances
- **Re-launch** the homework and removable drive exchange program
- **Continued partnership** with KUCB Channel 8 to broadcast educational content that is developed locally or from PBS



Superintendent
Dr. Bridget Weiss



Juneau School District

JUNEAU SCHOOL DISTRICT: COVID-19 RESPONSE PLAN

DR. BRIDGET WEISS, SUPERINTENDENT

HOUSE EDUCATION COMMITTEE HEARING

JULY 23, 2020



JUNEAU: BLENDED MODEL

- ELEMENTARY: 4 HALF DAYS
- MS/HS: AB SCHEDULE
- ALL SCHOOLS: WEDNESDAY AS AN E LEARNING DAY FOR STUDENTS
- CONSIDERATIONS MADE:
 - STUDENTS WITH SPECIAL NEEDS WILL ATTEND FULL DAY, 4 DAYS A WEEK AT ELEMENTARY
 - ADDITIONAL DAYS AS POSSIBLE AT MS/HS FOR STUDENTS WITH SPECIAL NEEDS
- ISSUES: SAFETY AND EQUITY

CHILDCARE, CARES \$ AND OUR MOST VULNERABLE

- CHILDCARE
 - SIGNIFICANT challenge!
 - WORKING WITH CBJ TASK FORCE
 - DEVELOPING STRUCTURE FOR STAFF—but not sure yet how to support it financially
- CARES
 - Developed a 1:1 device program
 - PPE for buildings and personnel
 - NOT enough—we will need additional funding for staff and academic recovery

RESPOND, REBOOT, AND RECOVERY

- Current **response** effort is something we have never done before:
 - Distance delivery, home schooling options, special education needs, curricular strategies with blended model, mitigation in environments where the guidelines are nearly impossible
- **Reboot:**
 - We hope to learn from our experiences and be better for it in the end, but in the here and now we are asking A LOT from every individual in our organizations. And the real threat of loss of enrollment and the impact to our funding is daunting.
- **RECOVERY:**
 - The stages of recovery will take on a life of their own as we proceed: we need support now in order to deliver high quality instruction with the level of mitigation necessary for safety, however...as we proceed, the losses will take time to recoup. Summer of 2021 will be a critical stretch of time for us to augment learning opportunities and the cost is going to be a huge challenge.



Superintendent
Terri Walker



Northwest Arctic Borough School District



Mission

The Northwest Arctic Borough School District's mission is to provide a learning environment that inspires and challenges students and employees to excel.

Priorities for Reopening

- Safety and security of students, staff, and community
- Social and emotional well-being of our students and staff
- Targeted instruction for students using platforms that can be used in classrooms and remotely



Flexible Learning Plan

- Extended start date
- School will start on August 20, 2020
- Orientation for parents/students the first two days
- Staggered schedules
- 1:1 electronic device for each student K-12
- Middle/High school block schedule
- Blended learning model



Medium Risk Opening

- Practice protocols and expectations
- Cohort rostering and staggered scheduling
- On-site and remote teaching
- Blended learning lessons
- Social and emotional needs of students
- Meals at home and in-school
- Provide information and training
- Safety measures in place



Quyaana Thank you

Questions



Superintendent
Dr. Deena Bishop



Anchorage School District

Educating All Students for Success in Life

Anchorage School District



Anchorage School District Risk Level Decision Matrix

The following matrix outlines ASD's decision-making process and considerations for determining the District's risk level for conducting school. This process is directly informed by the Municipality of Anchorage and the State of Alaska Department of Health and Social Services.

ASD will monitor the community COVID data on a daily basis; however, District risk-level decisions will be made every two weeks. The risk level will be subject to change based on direction from the Municipality or State.

Municipality Alert Level	Municipality Average Daily Incidence Over the Last 14 Days	Municipality Interpretation	Anchorage School District Level	Decision Considerations
High	>29 Cases	Widespread community transmission with many undetected cases and frequent discrete outbreaks	High	Greater than 29 new cases over a 14-day average
Intermediate	15-28 Cases	Moderate community transmission with some undetected cases and infrequent discrete outbreaks	Medium-High	<ul style="list-style-type: none"> 14-day average of new case numbers High number of student and staff absenteeism due to illness Ability to have adequate staffing for a safe environment Need for additional physical distancing space for students and staff Isolated "hot spots" within the Municipality Other pertinent info from State, Community, and health officials
Low	<15 Cases	Minimal community transmission	Medium Low	<ul style="list-style-type: none"> 14-day average of new case numbers Ability to have adequate staffing for a safe environment No isolated "hot spots" within the Municipality Other pertinent info from State, community and health officials
			Low	Less than 15 new cases over a 14-day average



Anchorage School District School Start Risk Level Response Plan



ASD at School				
	Low Risk	Medium-Low Risk	Medium-High Risk	High Risk
How many days at school?	5 days a week	5 days a week	2 days a week	0 days a week
Who attends at school?	All students	All students	Alphabet-based cohort (50%) Cohort 1 = last name A-L Cohort 2 = last name M-Z	No students
How long is the school day?	Full student day 6.5 hours	5.5 hours a day	5.5 hours a day	N/A
How many eLearning days?	Only for a school cancellation	Only for a school cancellation	3 days a week	5 days a week
Teaching & Learning	Instruction in physical setting using ASD curriculum (Traditional model)	Instruction in physical setting and online using ASD curriculum (Blended Model)	Instruction in physical setting and online using ASD curriculum (Blended Model)	Instruction online using ASD curriculum (eLearning model)
ASD at Home				
Opt-in Choice: ASD Virtual	<ul style="list-style-type: none"> • Full-time online program regardless of risk level • Dedicated online curriculum aligned to standards • ASD virtual teachers facilitating learning • Continue to be enrolled at neighborhood school or school of choice • Access activities at neighborhood school or school of choice 			
Enrollment Choice	<ul style="list-style-type: none"> • Correspondence through ASD homeschools 			



Anchorage School District Response Matrix – Confirmed Case

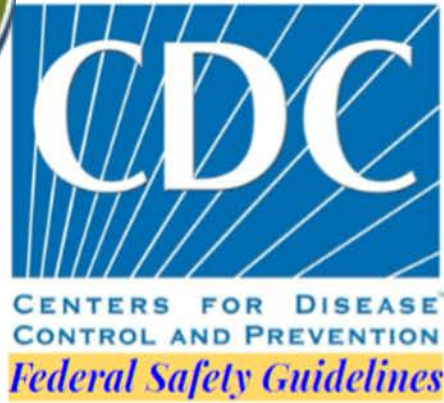
Situation	Evaluated Probability of Transmission In School(s)	Assumption Remarks	Response*
1 Case	Low or no risk	Confirmed case had little to no contact time in school	<ul style="list-style-type: none"> No building closure Notify school parents
	Possible/Suspected	Confirmed case had some contact time in school while infected	<ul style="list-style-type: none"> 24-hour or no closure Disinfect school Notify school parents
>1 Case in a School in a 1-3 Day Time Frame	Possible/Suspected	Increased possibility that transmission occurred within a school building	<ul style="list-style-type: none"> 24-72 hour building closure Disinfect school Notify school parents
>1 Case in Multiple Schools in a 1-3 Day Time Frame	Low or no risk	No specific region or discernible pattern to link confirmed cases	<ul style="list-style-type: none"> Address each case separately (as defined in the 1 Case model)
	Possible/Suspected	<ul style="list-style-type: none"> Cases occur within a geographic region indicating a “hot spot(s)” or a common origination Scale of cases may necessitate an immediate response to transition to high risk 	<ul style="list-style-type: none"> 24-96 hour closure of affected schools or schools in the region (with possible extension) Potential districtwide risk: Transition to High Risk delivery Disinfect schools Notify school parents Notify Office of Emergency Management; public notification



Superintendent
Beth Lougee



Ketchikan Gateway Borough School District

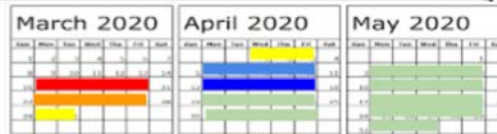


KGBSD SmartStart 2020
*Crafting an Informed Framework for Reopening
Our Schools. Together.*



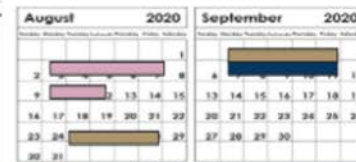


KGBSD COVID-19 Continuity of Learning Plan Timeline



March 16 - 20	March 23 - 27	March 30 - April 3	April 6 - 10	April 13 - 17	April 20 - June 3
Spring Break	Staff Returns. Students on Extended Break.	School Resumes	Extended Schedule	Distance Learning Begins	Distance Learning Continues
Closure is an extension of Spring Break until March 30	Closure is extended to April 6	Closure is extended to May 1	Closure is extended through end of school year	District grading/credits plan implemented pK-12.	Final daily schedule and instructional plan communicated and implemented.
District Covid Response Team formed and begins daily meetings.	Staff receive professional development in: Zoom, Self-Care, COVID-19 Health Information, and Work from Home strategies.	Daily 30-min. meetings with homeroom students (pK-6). Daily advisory meetings (7-12). Emphasis on building connections with and between students (SEL).	Secondary schedule extended to twice daily meetings, allowing for a rotation through all periods over the course of the week, not just advisory.	Teachers begin providing distance learning using existing tools and Quarter 3/Trimester 2 or posted "At-Home Learning Activities" content.	Staff work to identify and facilitate "Essential Learning"
Educational Response team formed and begins meeting.	Staff contact all advisory and Homeroom Students and conduct needs assessment.	"At Home Learning" activities go live for students and families.	Elementary continues with daily Homeroom meetings	At-Home Professional Development (readings) on distance learning strategies and equity.	Professional development ongoing to support learning management systems, distance instructional strategies, and distance learning tools.
District's philosophy and focus for crisis education established.	Staff surveyed on home connectivity	Tech begins distribution of chromebooks for students.	Focus remains on SEL/Connectedness.	Families surveyed on distance learning readiness.	Preparations for summer school and multiple possible fall 2020 instructional environments.
Family technology needs assessment distributed.	Food Service begins.		Teachers surveyed on distance learning readiness		

KGBSD COVID-19 Continuity of Learning Plan Timeline



June 15 - July 23	July 13-August 13	August 25-September 4: Staff Starts School	September 8-Students Start School
Summer School	Extended School Year (Students w/ Special Needs only)	Smart Start 2020	Smart Start 2020
We continue to be dedicated to your child's academic and social emotional education. Your child is invited to attend summer school June 15th through July 23rd. With social distancing mandates still in place, we will be offering summer school instruction remotely through Zoom sessions with a daily schedule of activities. This year's summer school will be open to ALL students enrolled in KGBSD grades K-12 and can be registered by a parent/guardian.	Schedule (days, times, weekly overview) <ul style="list-style-type: none"> Dates: July 13 through August 13 2 daily sessions -one morning and one afternoon, 2 hours a piece 4 days a week -Monday through Thursday 8:30am - 10:30am -one hour break- 11:30am -1:30pm Master schedule for all ESY students and staff, as well as sub-schedules to accommodate families who may opt for home visits or online options. This is a longer day for staff, but it keeps the numbers low and more in line with the Smart Start plan. Building Location (who is in which rooms and when) <ul style="list-style-type: none"> KCS is the ESY building 	Building Level Professional Development & Staff Work Days to prepare for all risk levels. Staff training and continuing development of asynchronous distance learning courses. Health and Safety building preparations and staff training on Health and Safety practices.	September 7, Monday: LABOR DAY Buildings closed, no online activity September 8-11: Tuesday - Friday: •Orientation at school sites, a different student group each day, •Online training for students on days they don't attend orientation. •Preschool Screening September 14: Classes Begin based on level of risk.



Ketchikan Gateway Borough School District

The district's top priority is providing for the needs of our students, families, staff, and community during this time, charting a path forward for educating our students, and keeping them safe at the same time. We are committed to doing what we need to do to accomplish this.

Considerations and Challenges:

- Planning time and training for different tiers of instruction
- Resources to support the different tiers of instruction (staff, space, PPE)
- Managing the daily changes with updated information due to new recommendations and restrictions



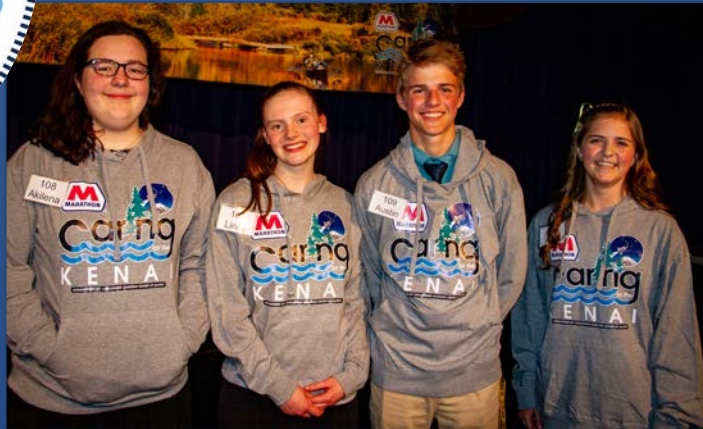
Superintendent
John O'Brien



Kenai Peninsula Borough School District



Kenai Peninsula Borough School District



July 23, 2020, House Education Committee
John O'Brien, Superintendent of Schools
Dave Jones, Assistant Superintendent of Instructional Support
Clayton Holland, Assistant Superintendent of Instruction
www.KPBSD.org



Kenai Peninsula Borough School District

COVID-19 and Kenai Peninsula Borough School District

Preparing for New School Year in August



- **CHOICE**
- **CONSISTENCY**
- **CONTINUITY**
- **SYMPTOM FREE SCHOOLS**



KPBSD Smart Start 2020



www.KPBSD.org | 907-714-8888



Fiscal Concern: Covid19 and Enrollment

Issue

- Neighborhood school enrollment shift to our KPBSD Connections Homeschool
- Neighborhood school enrollment loss to non-KPBSD statewide correspondence programs

Solutions

- Short term: FY21 Hold Harmless for declining enrollment districts
- Long term: FY22 enrollment based on prior year actual enrollment



Decreased funding = reduction of staff
and educational opportunities

What if: when the COVID19 pandemic risk is over,
possibly mid-year, and students want to return to KPBSD
neighborhood schools





Superintendent
Shawn Arnold,
ASA President



Valdez City Schools



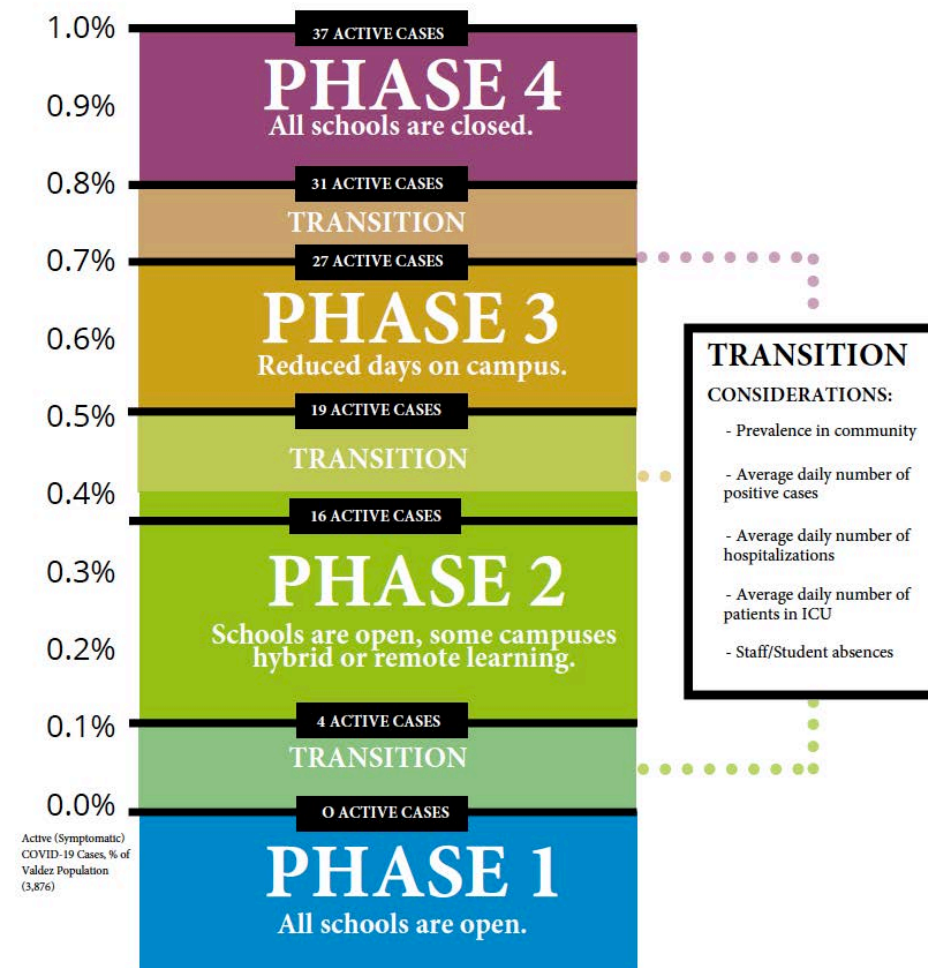
Phase Transition Considerations

- Prevalence in Community
- Average Daily Number of Positive Cases
- Daily Hospitalizations
- Number of patients in ICU
- Staff/Student Absences

Components of Each Phase Include

- Health and Safety Protocols
- Parent and Family Engagement
- Wraparound Support and Community Services
- Transportation
- Trauma Informed Practices/
Social and Emotional Needs
- Welcome Back Planning
- Connections with Stakeholders

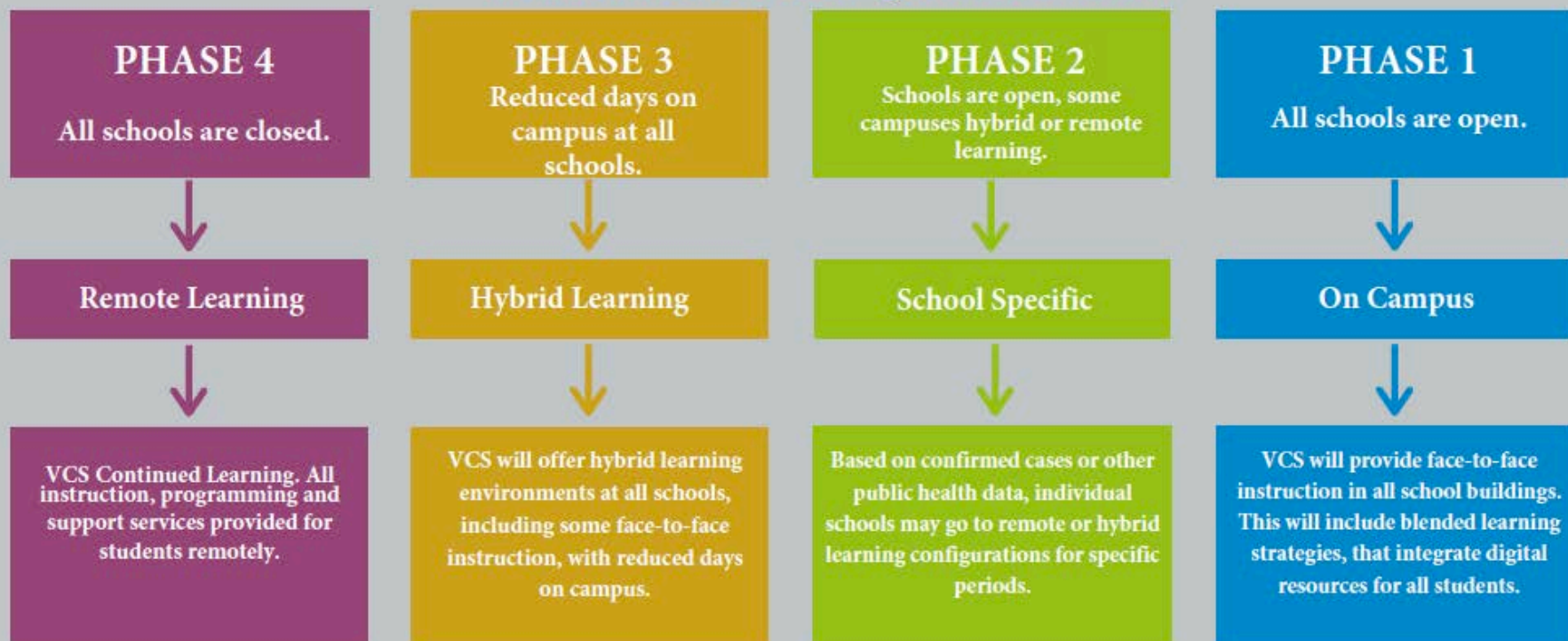
VCS GATING CRITERIA PHASE THRESHOLDS AND CONSIDERATIONS





FAMILY OPTIONS FOR 2020-2021 SCHOOL YEAR

OPTION 1: VCS Learning Continuum Plan



Option 2: VCS at Home Program

All VCS families have the option to choose our VCS at Home remote learning program with their base school for the full semester, regardless of what phase the districts is in for face-to-face instruction. Families must register ahead of each semester for the 2020-2021 school year.

Option 3: Valdez Homeschool Program

This program requires enrolling at Valdez Homeschool Program as your child's base school. The programming is self-directed and self-paced, with more reliance on families for curriculum support and engagement. This school supports students in grades K-12.



Considerations and Challenges

- **Planning time and training** for multiple tiers of instruction:
 - In-class instruction
 - Fully virtual
 - Hybrid of the two
- **Adequate supplies and staffing** available to support healthy hygiene practices, and to routinely clean and disinfect objects and surfaces.
- **Support from local health officials** to review and update plans, and to determine if or when to dismiss schools.
- **Physical, social, and emotional well-being** of staff and students.
- **Reacclimatizing students and staff** back to physical settings, new routines.
- **Managing expectations** and logistical issues.
- **Re-entry plan changes** as more information becomes available and as recommendations and restrictions evolve.



Thank
You!