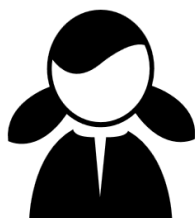


WHO ARE ALASKA'S CTE STUDENTS?



2018-2019 STATEWIDE AVERAGES

DEMOGRAPHICS



43%

Of CTE participants are female

41%

Are economically disadvantaged

31%

Are NTO*

14%

Are disabled

8.7%

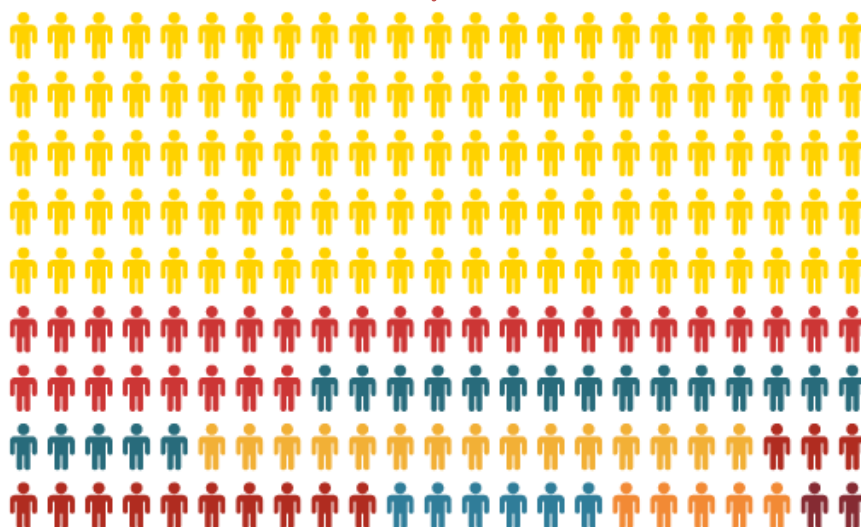
Are Migrant

6.5%

Are EL†

* Nontraditional Occupations

† English Learners



👤 Caucasian— 55%; 👤 Alaska Native—15%; 👤 Two or more races—10%; 👤 Asian—7%; 👤 Hispanic—6%;
👤 Black—3%; 👤 Pacific Islander—2.5%;
👤 American Indian—1%

CTE IN ALASKA



95% GRADUATION

CTE concentrators‡ are 17% more likely to graduate than their non-CTE counterparts.

‡ Students with ≥ 2.0 HS CTE credits



17.5%

Alaskan graduates are CTE concentrators



30%

Of students took at least one CTE class in high school

73%

Of CTE concentrators go on to postsecondary, adv. training, the military, or employment.

	2013	2014	2015	2016	2017	2018	2019	7 year trend
Female participants	44.23%	43.61%	43.05%	42.32%	42.56%	42.77%	43.02%	↘
Economically disadvantaged	38.28%	38.06%	34.77%	38.00%	40.20%	40.74%	40.57%	↗
NTO	23.55%	22.03%	17.84%	18.20%	29.46%	31.89%	30.72%	↑
ELL & Migrant	12.52%	13.35%	12.59%	13.46%	13.37%	14.06%	15.15%	→
Disabled	12.15%	12.47%	13.04%	11.00%	13.98%	13.96%	13.80%	→
	2013	2014	2015	2016	2017	2018	2019	7 year trend
Caucasian	55.47%	55.06%	54.38%	54.60%	54.19%	54.69%	55.34%	→
Alaska Native	15.92%	15.81%	15.94%	15.98%	16.09%	15.00%	14.88%	→
Asian	7.62%	7.82%	7.21%	7.44%	7.23%	7.60%	7.22%	→
Multiracial	6.66%	6.94%	10.16%	8.28%	9.49%	9.21%	9.64%	↗
Hispanic	6.78%	6.79%	6.37%	6.80%	6.51%	6.84%	6.38%	→
Black	3.87%	3.68%	3.26%	3.34%	3.07%	3.13%	2.80%	→
Pacific Islander	2.26%	2.50%	1.74%	2.30%	2.05%	2.22%	2.60%	→
American Indian	1.42%	1.41%	0.94%	1.26%	1.37%	1.33%	1.13%	→
	2013	2014	2015	2016	2017	2018	2019	7 year trend
CTE Concentrator graduation rate	89.54%	89.84%	93.00%	94.55%	95.44%	94.43%	84.72%	→
CTE Participants	38.73%	34.76%	29.35%	32.47%	31.70%	33.56%	30.08%	↘
% of AK grads who are CTE Concentrators	24.89%	19.24%	17.80%	18.46%	18.47%	17.38%	17.50%	↘
Placement rate	77.06%	80.52%	79.80%	78.90%	79.00%	69.45%	72.69%	↘