



Wilson
Center

Navigating the New Arctic

Dr. Mike Sfraga, Director

Polar Institute &

Global Risk and Resilience Program

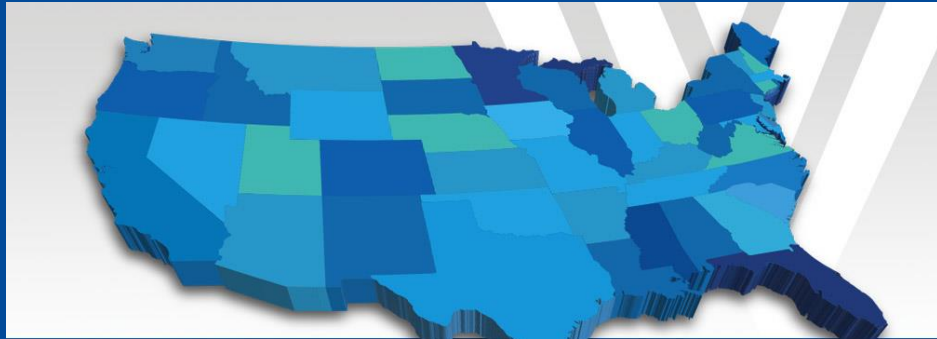
Woodrow Wilson International Center for
Scholars

Established by the U.S. Congress in 1968

Woodrow Wilson International Center for Scholars



**#10 Think Tank
Worldwide**



**#6 Think Tank
in the United States**



**#1 Regional Studies
Think Tank**



**#1 Best Institutional Collaboration
Involving Two or More Think Tanks**

2019 Global Think Tank Index Report
University of Pennsylvania



Dr. Mike Sfraga

A New Ocean



The Global Arctic is 5.4
M Sq. Mi

Roughly 1.5 times the
size of the United States

Nearly half the size of the
Continent of Africa.

The Arctic Has Emerged

- Politically
- Socially
- Economically
- Physically
- Strategic Bering Strait
- Great Power Competition
- NATO, 2nd Fleet, GI-UK Gap...
- Sustainable Arctic communities
- SAR

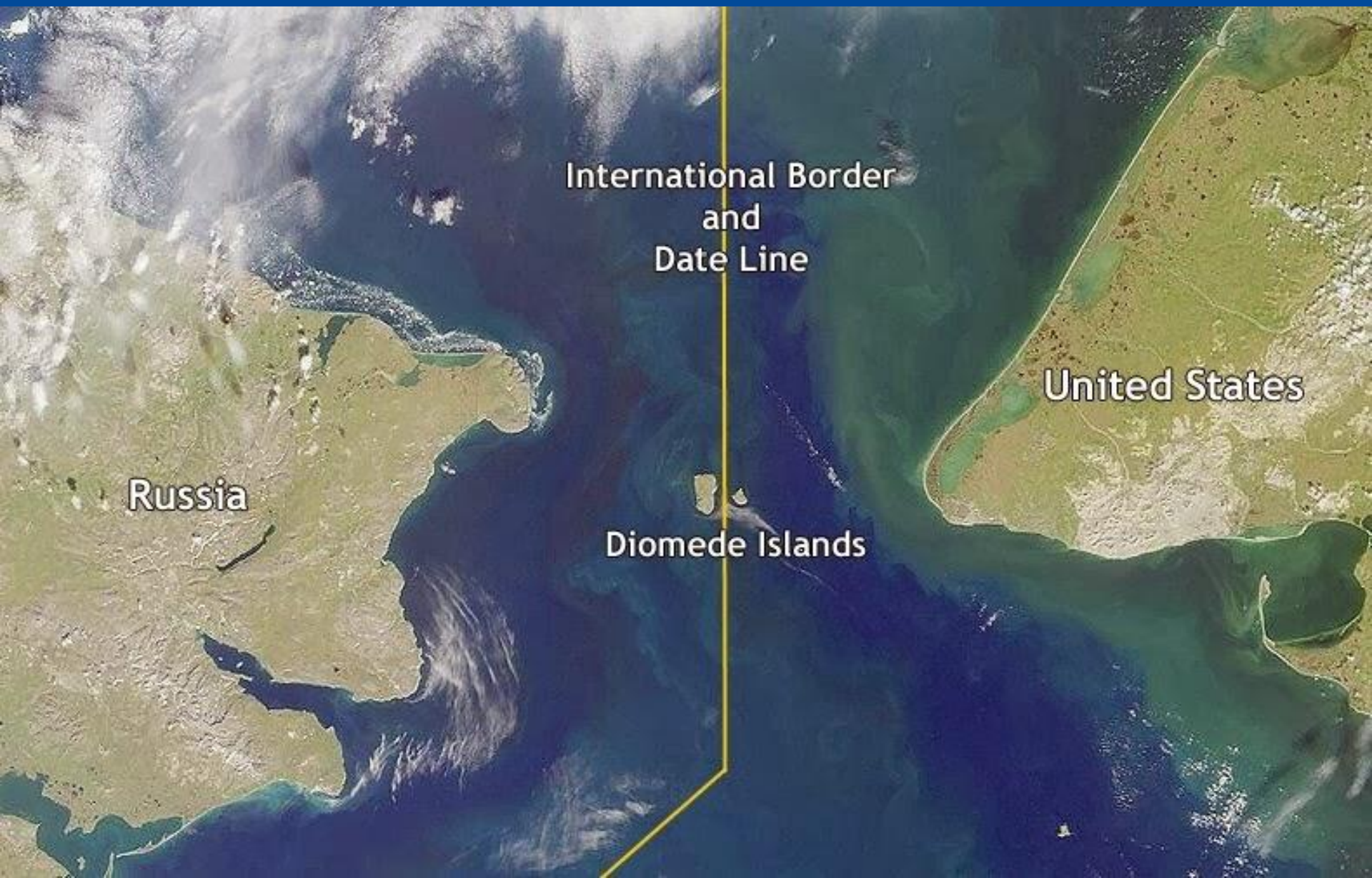


Navigating the Arctic's Seven Cs

- Climate
- Commodities
- Commerce
- Connectivity
- Communities
- Cooperation
- Competition



The US, RUSSIA and the Arctic



The Great Geopolitical Game Board



Russia plays *Survivor*



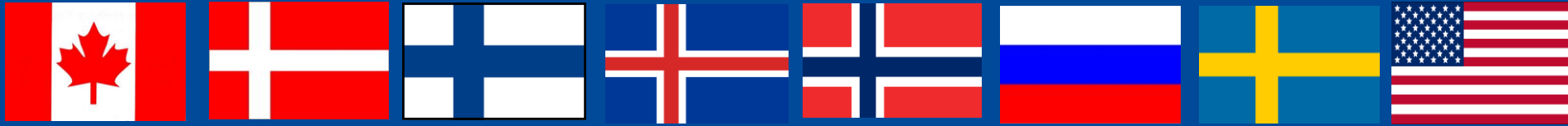
China plays *Go*

The US plays *Twister*



Cooperation: Arctic Council

Members



Canada Denmark Finland Iceland Norway Russia Sweden USA

Permanent Participants

The Aleut International Association
The Arctic Athabaskan Council
Gwich'in Council International
The Inuit Circumpolar Council
Russian Association of Indigenous Peoples of the North
The Saami Council

Working Groups

Arctic Contaminants Action Program (ACAP)
Arctic Monitoring and Assessment Program (AMAP)
Conservation of Arctic Flora and Fauna (CAFF)
Emergency Prevention, Preparedness, and Response (EPPR)
Protection of the Arctic Marine Environment (PAME)
Sustainable Development Working Group (SDWG)

Observer Nations



France Germany Italy Japan The Netherlands China Poland India



South Korea



Singapore



Spain



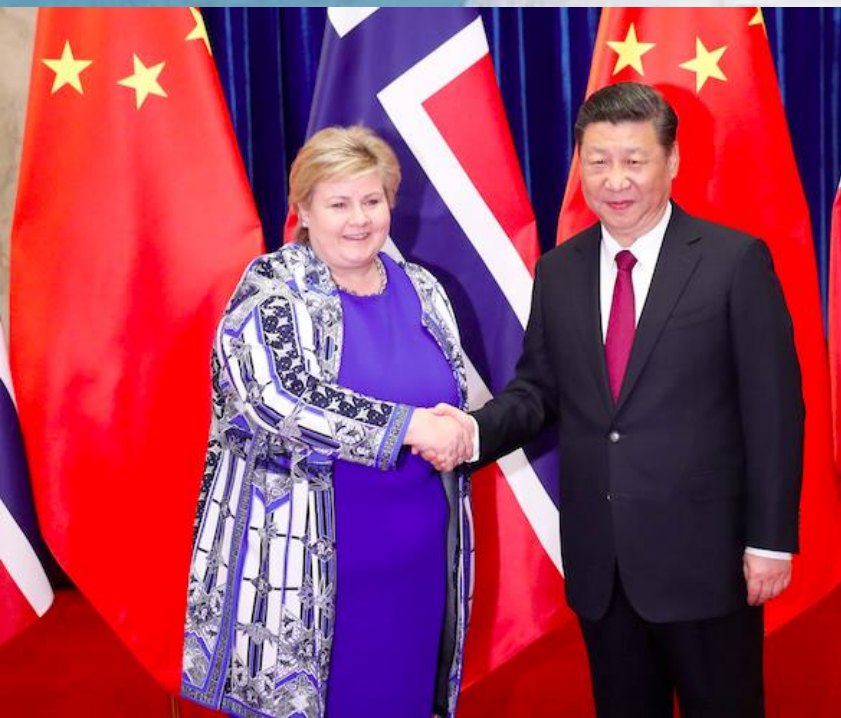
Switzerland



UK

CHINA'S POLAR SILK ROAD

Scandinavia's Unlikely Link



Commodities



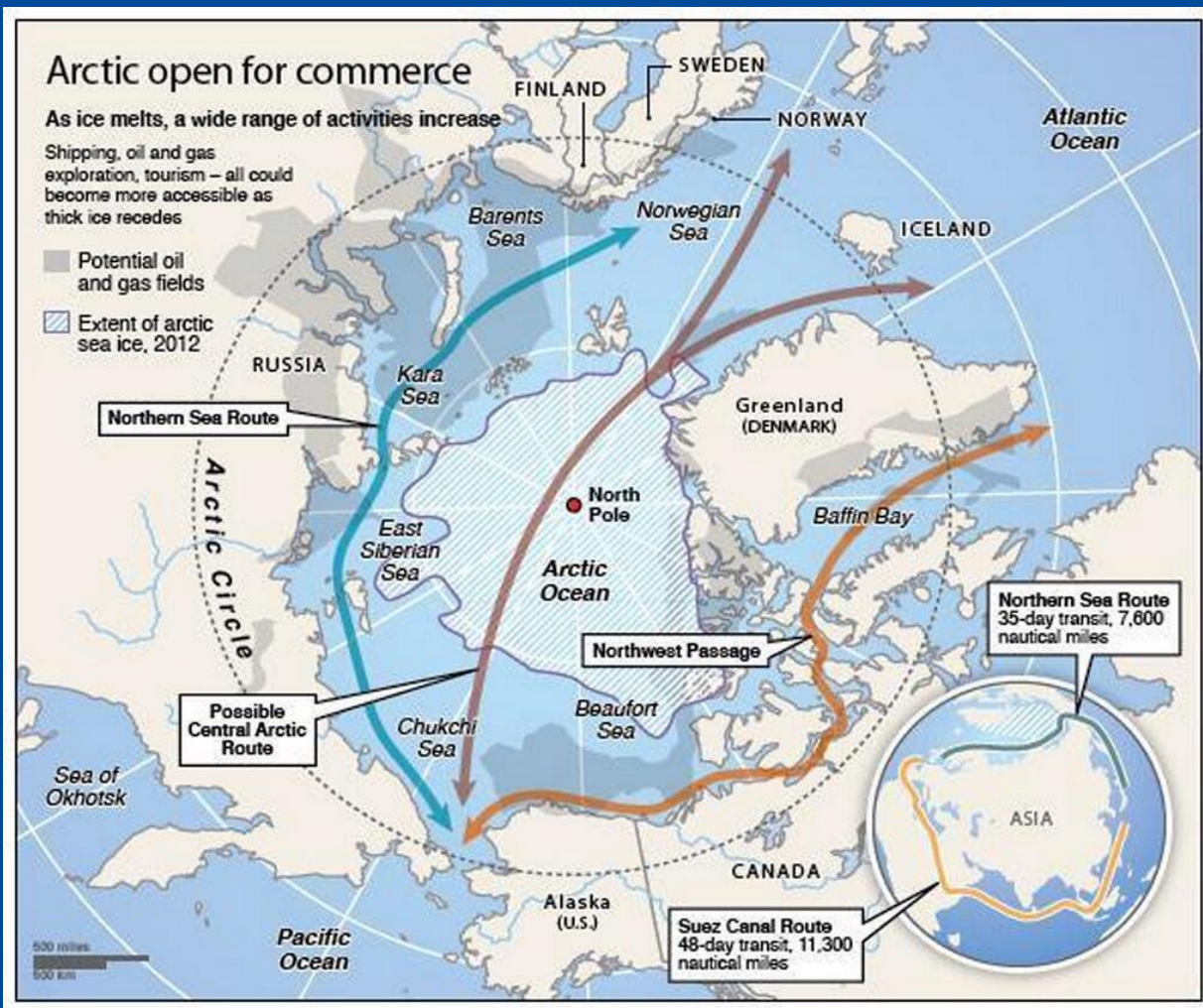
“Circum-Arctic Resource Appraisal: Estimates of Undiscovered Oil and Gas North of the Arctic Circle”

- 13% Undiscovered Oil
- 30% Undiscovered Natural Gas
- 20% Undiscovered Natural Gas Liquids
- Alaska’s Arctic Seafood industry averaged \$3.3 billion annually over the past decade

Alaska Resource Development Council



Commerce



Suez Canal 2018:

- 18,174 vessels
- 983.4 million tons of freight

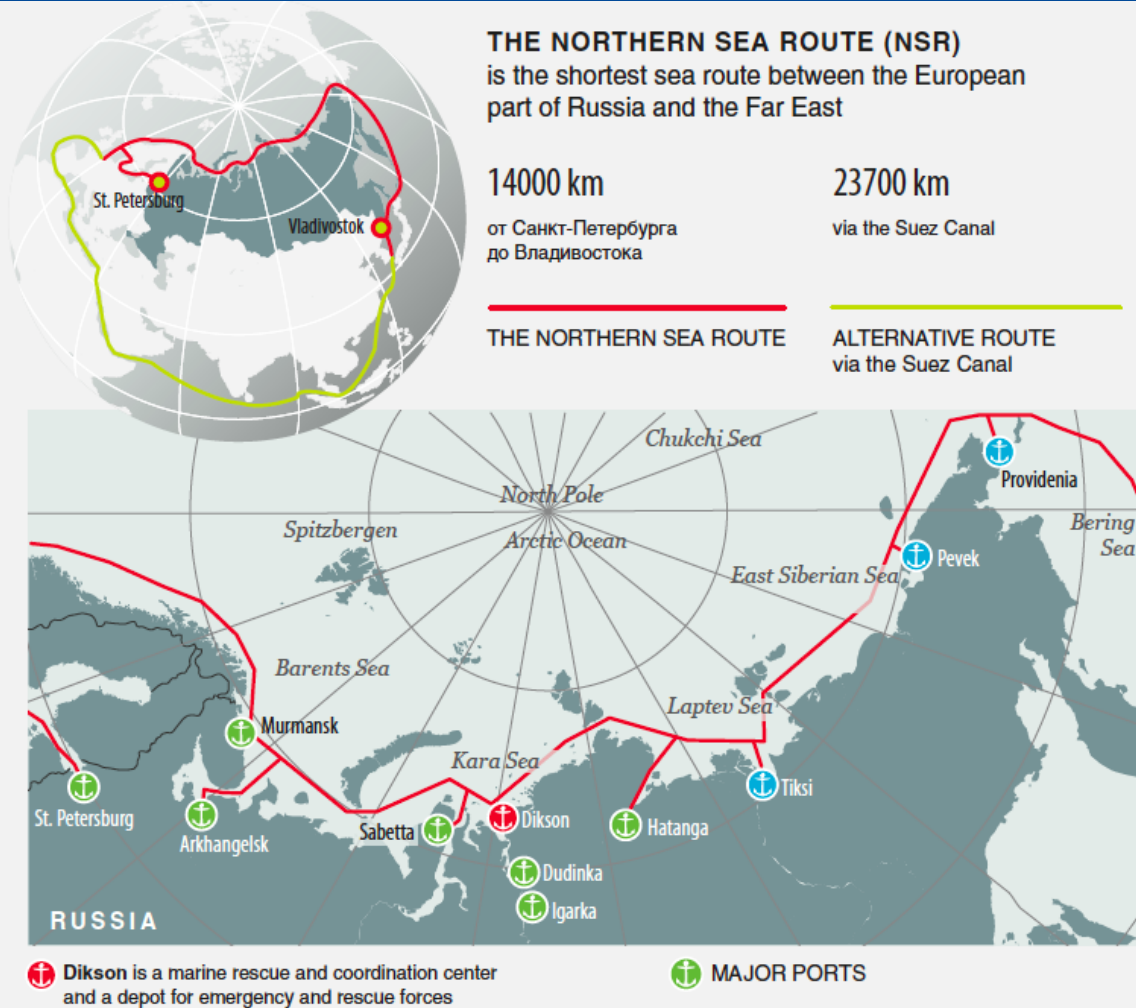
Panama Canal 2018:

- 13,795 vessels
- 442.1 million tons

Northern Sea Route 2018:

- 22,022 voyages
- 20.1 million tons

Commerce – Northern Sea Route



NSR 2017:

- 10.4 million tons of freight

NSR 2018:

- 20.1 million tons of freight

NSR (Jan-Sept) 2019:

- 23.37 million tons of freight

NSR 2024:

- 80 million tons of freight (estimated)

NSR, China, and Global Commerce

China's New Shipping Frontier

How the new Northern Sea route compares to the traditional Suez Canal route

NORTHERN SEA ROUTE

Travel time

35 days

Dangers

Icebergs

Travel window

July to November

Container-carrying vessels

One this year

SUEZ CANAL ROUTE

Travel time

48 days

Dangers

Access to Suez Canal under question with upheaval in Egypt

Travel window

Year-round

Container-carrying vessels

17,000 last year





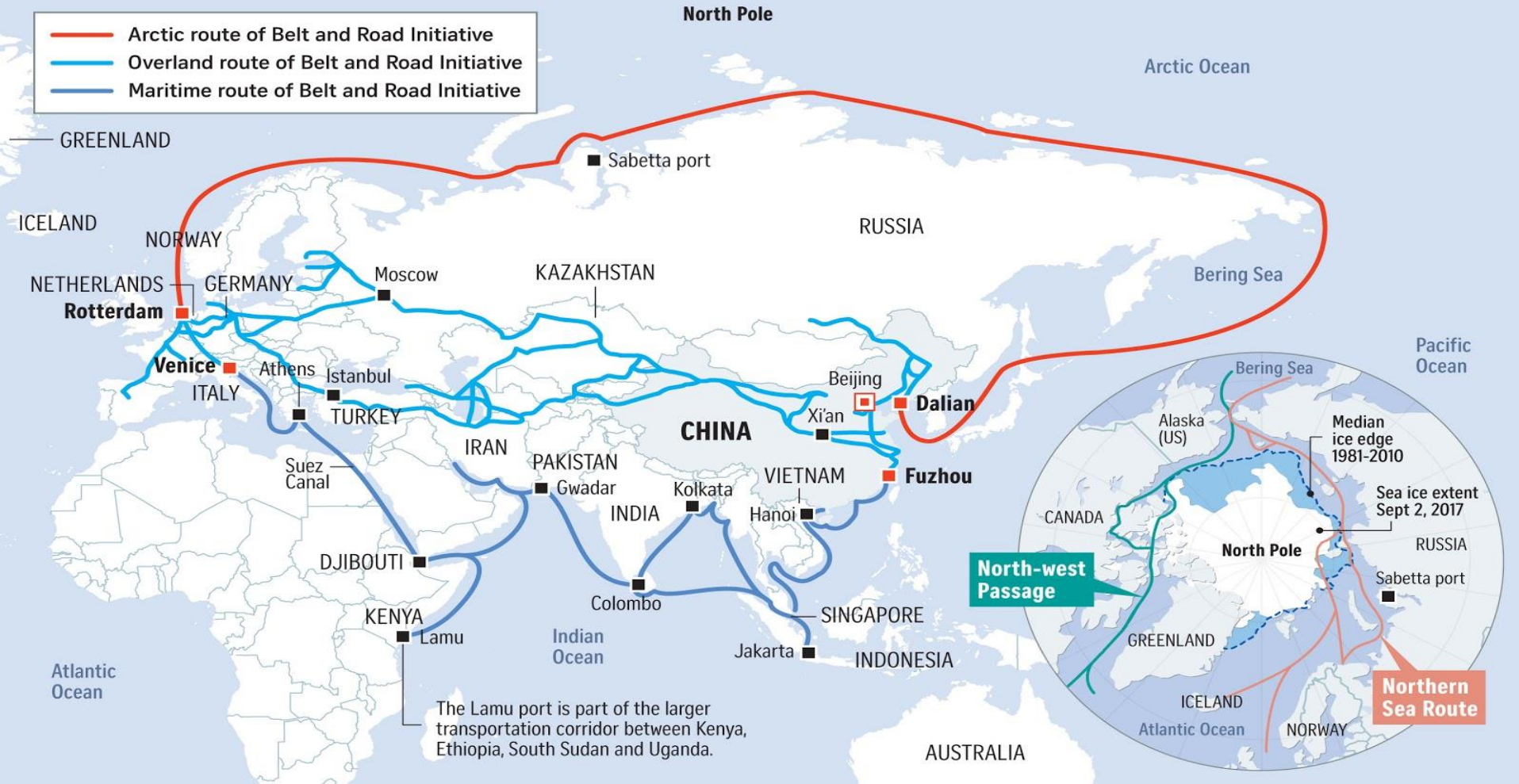
The **Northern Sea Route** is around 10–15 days faster than the traditional route. Depending on weather and ice it is navigable without icebreakers for two–four months of the year. Russia wants to make it possible year-round by 2030



[Source: Financial Times](#)

China's Polar Silk Road

China's polar extension to Silk Road



NOTE: September is the end of summer in the North Pole when the frozen lid of sea ice tends to shrink to its smallest. Unlike the Antarctica, there is no land under the frozen Arctic ice.

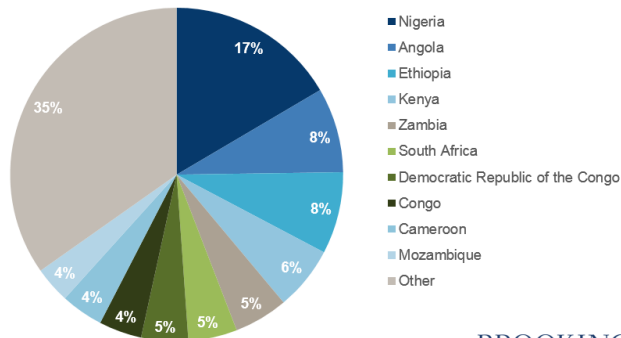
Sources: CHINA'S NATIONAL DEVELOPMENT AND REFORM COMMISSION, THE ARCTIC INSTITUTE, NATIONAL SNOW AND ICE DATA CENTRE, REUTERS STRAITS TIMES GRAPHICS

China's Investment Abroad



China in Africa

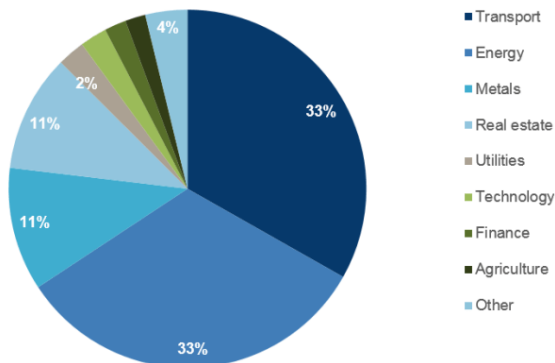
Locational distribution of Chinese investment in Africa (2018)



Source: Chinese Investment Tracker, AEI

BROOKINGS

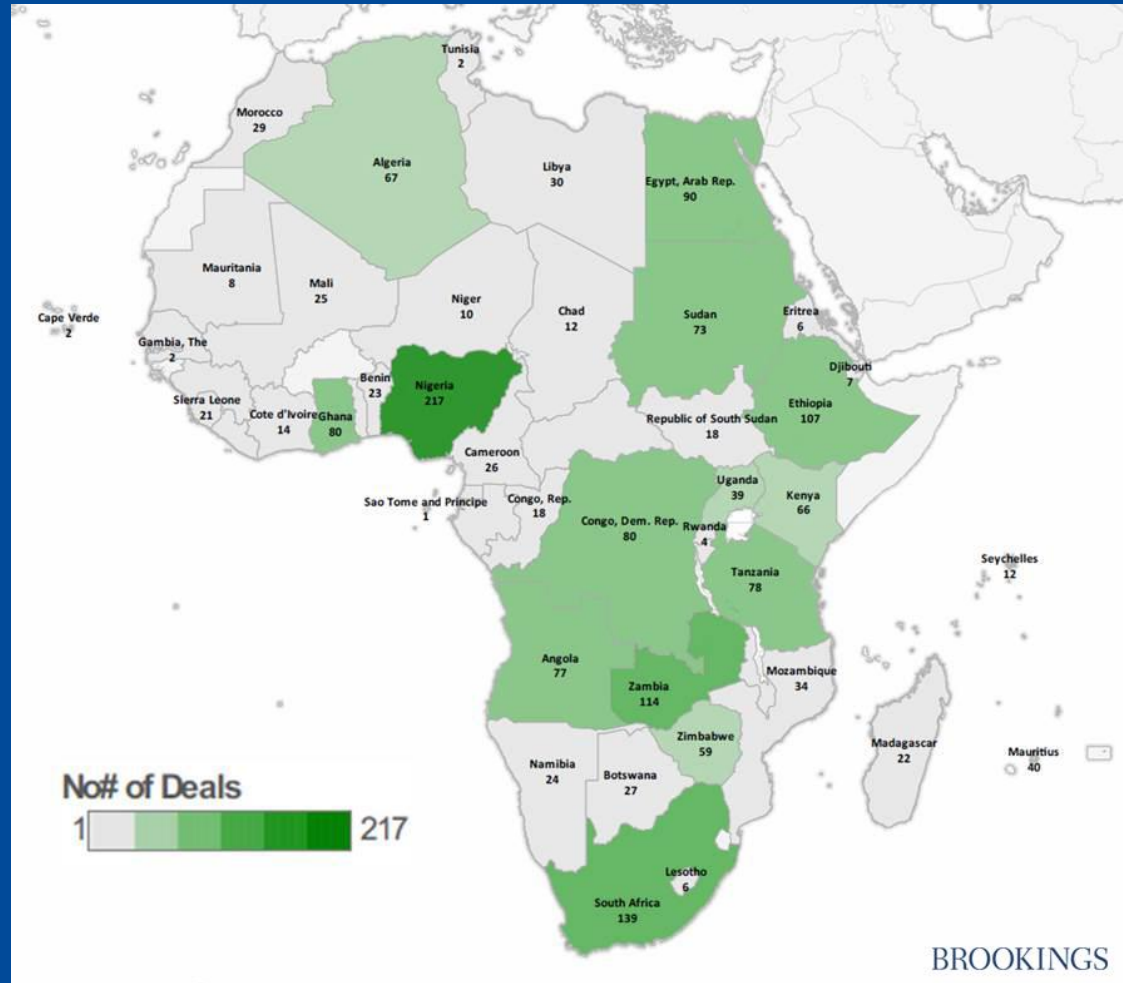
Sectoral distribution of Chinese investment in Africa



Source: Chinese Investment Tracker, AEI

BROOKINGS

CHINESE INVESTMENT IN THE CONTINENT (2015)



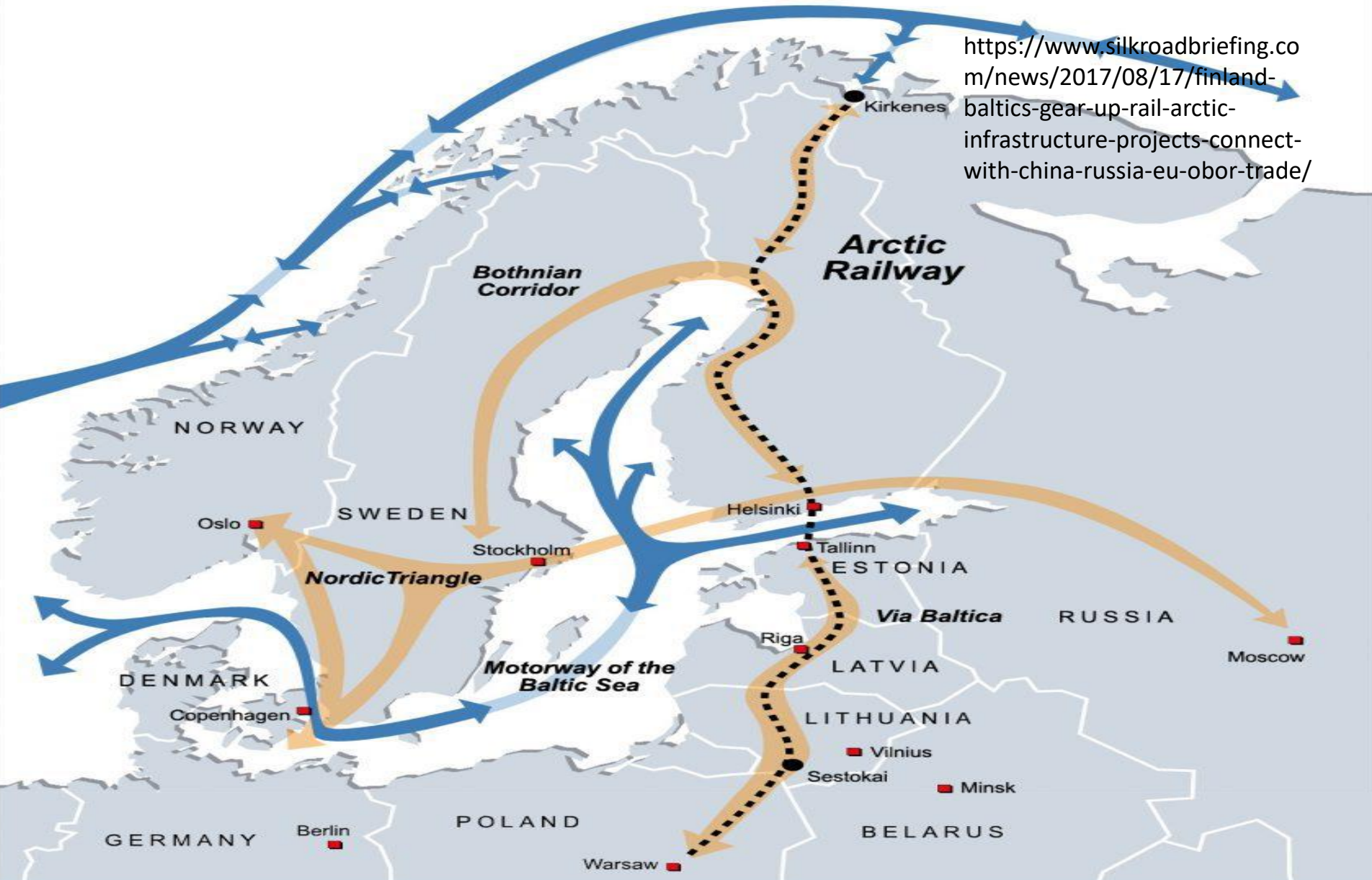
BROOKINGS

China—Europe Railway Express

Kouvola-Xi'an Direct Cargo Train Connection



China – Finland – Baltics - Russia



Stats—PRC Investments in Arctic States							
	Population	GDP	GDP per capita	# of Transactions	Average Transaction Size (Million USD)	Total Value (Billion USD)	% of GDP
Canada	35,362,905	\$1.53 trillion	\$46,400	107	\$442.1	\$47.3	2.44%
Greenland	57,728	\$1.06 billion	\$37,600	6	\$33.4	\$2.00	11.6%
Iceland	335,878	\$20.05 billion	\$49,200	5	\$30.8	\$1.2	5.7%
Norway	5,265,158	\$370.60 billion	\$69,400	17	\$147.9	\$2.5	0.9%
Russia	142,355,415	\$1.28 trillion	\$26,900	281	\$691.7	\$194.4	2.8%
USA	323,995,528	\$18.62 trillion	\$57,600	557	\$340.6	\$189.7	1.2%
Total	-	-	-	884	\$508.66	\$449.66	-

Competition - Icebreakers



China

In service = 4
Developing = 2
Nuclear = 1



Russia

In service = 53
Developing = 6
Planned = 12



United States

In service = 2
Planned = 6

Canada

In service = 10
Developing = 3
Planned = 6

Finland

In service = 11

Sweden

In service = 4
Planned = 3

Norway

In service = 2

Denmark

In service = 7

Germany

In service = 1
Planned = 1

South Korea

In service = 1
Planned = 1

Japan

In service = 1

The Great Geopolitical Game Board



Russia plays *Survivor*



China plays *Go*

The US plays *Twister*



Navigating the Arctic's Seven Cs

- Climate
- Commodities
- Commerce
- Connectivity
- Communities
- Cooperation
- Competition

