

Trust

Alaska Mental Health
Trust Authority

Legislative Presentation Senate Finance Committee

January 30, 2020

Trustees

- **Mary Jane Michael**, *Chair*
- **Chris Cook**, *Vice Chair*
- **Ken McCarty**, *Secretary*
- **Verné Boerner**, *Program and Planning Committee Chair*
- **Anita Halterman**, *Audit and Risk Committee Chair*
- **Laraine Derr**, *Finance Committee Chair*
- **John Sturgeon**, *Resource Management Committee Chair*

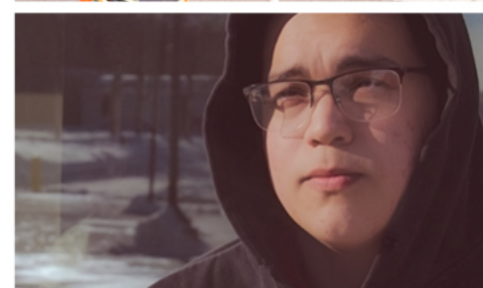


Trust Beneficiaries

Beneficiaries include Alaskans who experience:

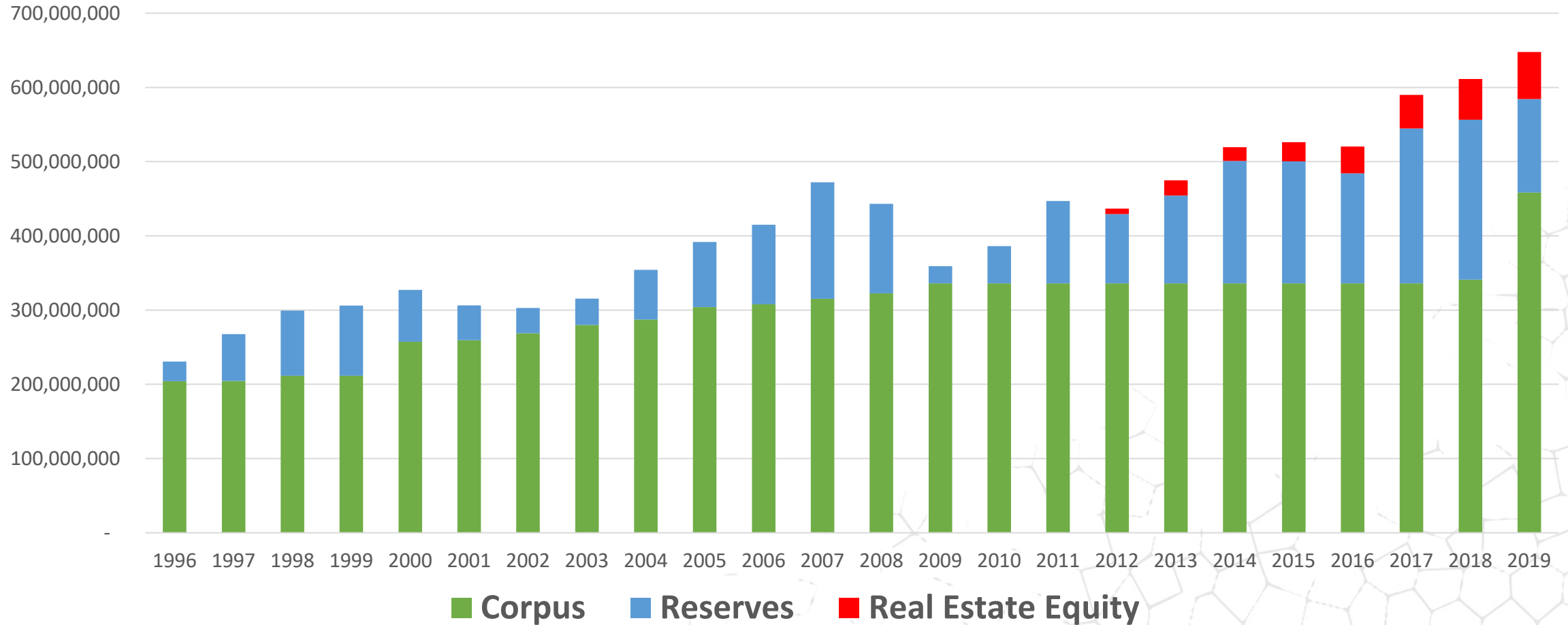
- Mental illnesses
- Developmental disabilities
- Alzheimer's disease and related dementias
- Traumatic brain injuries
- Substance use disorders

The Trust also works in prevention and early intervention services for individuals at risk of becoming beneficiaries.



Financial Position

Trust Invested Assets



FY21 Earnings and Available Funding

Trust Assets	End of FY19
Corpus	\$458,505,600
Reserves	\$125,913,783
Real Estate Equity	\$61,283, 324
Total	\$645,702,707

Trust's Available Funding FY21	
Investment Portfolio Payout (4.25%)	\$24,379,800
Prior Year Funds Carried Forward	\$3,223,079
Land Office Spendable Income (Expected)	\$4,731,900
Interest Earnings	\$736,700
Total	\$33,071,479

Prior Years' Available Funding	
FY20	\$31,776,100
FY19	\$29,437,000
FY18	\$28,908,000
FY17	\$28,234,000

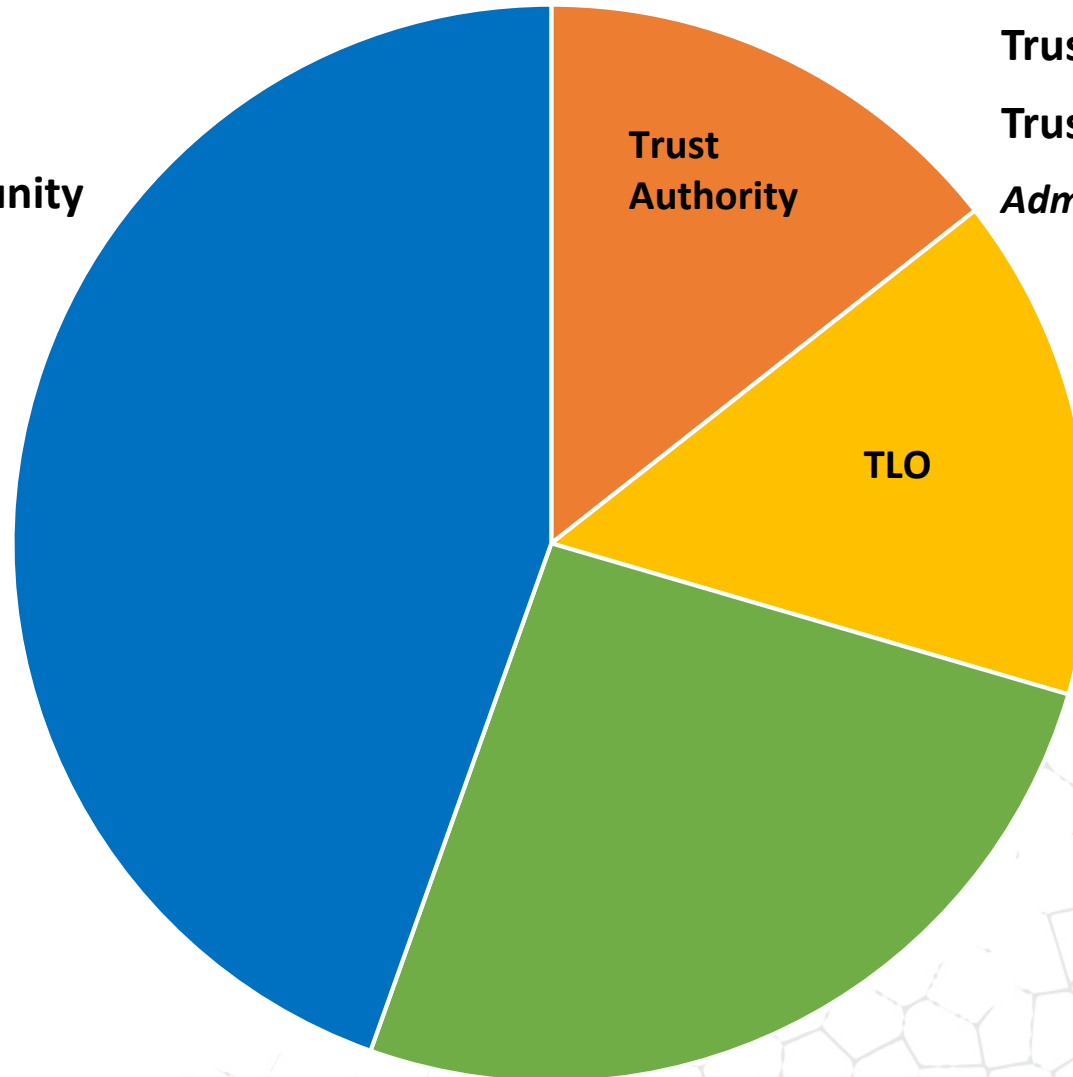
FY 21 Spending

Authority Grants

\$13,039.9

Designated grants to community providers, nonprofits, local governments and Tribal organizations

•Includes \$1.7 M in mini grants



Administrative Budgets

Trust Authority: \$4,215.1

Trust Land Office (TLO): \$4,425.6

Administrative budget is lower than FY20 levels

MHTAAR

\$7,587.5

Designated grants to state agencies, requires receipt authority

FY 21 GF/MH Recommendations

Trust Proposed Budget	GOV Proposed Budget					
	MHTAAR	GF/MH	AHFC	MHTAAR	GF/MH	AHFC
1. **Deferred Maintenance	\$250.0	\$250.0		\$250.0		
2. ** Medical Appliances and Assistive Technology		\$500.0			\$500.0	
3. ** Coordinated Transportation	\$300.0	\$1,000.0		\$1,300.0		
4. **Homeless Assistance Program	\$950.0	\$850.0	\$6,350.0	\$950.0		\$6,350.0
5. **Special Needs Housing Grant	\$200.0	\$1,750.0	\$1,750.0	\$200.0		\$1,500.0
6. **Home Modifications & Upgrades	\$300.0	\$750.0		\$300.0	\$750.0	
7. Holistic Defense Project, Bethel	\$193.8	\$372.7		\$193.8		
8. IT - Telehealth Service System Improvements	\$38.1	\$63.0		\$38.1		
9. Comprehensive Program Planning Coordinator	\$75.0	\$75.0		\$75.0		
10.** Essential Program Equipment	\$300.0	\$300.0		\$300.0	\$300.0	
** capital budget item						
TOTAL	\$2,606.9	\$5,910.7	\$8,100.0	\$ 3,606.9	\$1,550.0	\$ 7,850.0



Trust Land Office

- Subport Property Sale
- USFS Land Exchange
- Icy Cape Development

FY 19 Trust Land Office Revenues

Coal	\$14.5
Oil and Gas	\$1,279.5
Minerals	\$840.9
Materials	\$24.8
Timber	\$2,130.1
Land	\$3,594.6
Real Estate	\$2,755.4
Total	\$10,639.9

25 Years of Supporting Beneficiaries

- Harborview closure
- Mental Health Court
- Bring the Kids Home
- Medicaid Reform/Expansion



Medicaid Reform/Expansion

- \$10M investment (SB 74)
- Capacity support to the department
- Administrative Services Organization
- 1115 Waiver development (Behavioral Health and Substance Use Treatment)



Medicaid Reform Success

FY2019 DHSS Medicaid Reform Report:

- Estimated \$166M in GF savings and cost avoidance
- Flat state GF spending despite significant enrollment growth
- An increased use of Home and Community Based Service (HCBS) waivers
- 1115 Waiver will lead to continued savings

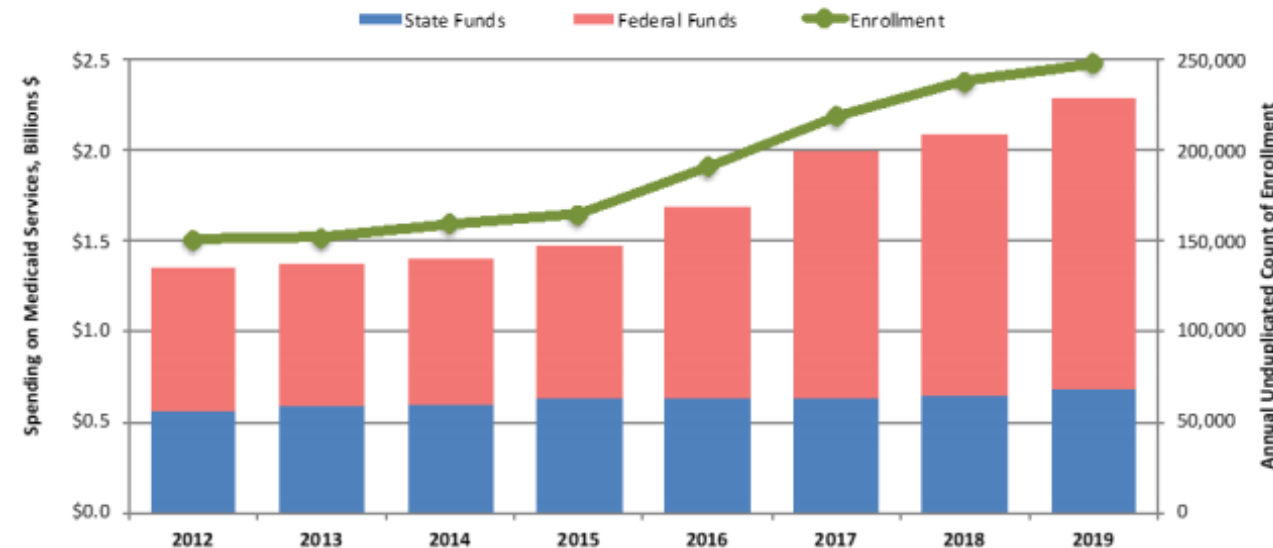
ANCHORAGE DAILY NEWS

Politics

2016 Medicaid reform bill generates huge savings for Alaska, official says

Author: Elwood Brehmer, Alaska Journal of Commerce Updated: 1 day ago Published 1 day ago

Medicaid Enrollment & Spending in Alaska
2012 – 2019 Date of Service Actuals



¹ Evergreen Economics. (November, 2019). Long Term Forecast of Medicaid Enrollment & Spending in Alaska ("MESA"): FY 2020 – FY 2040.

Psychiatric Crisis Continuum of Care

- Absence of full continuum including community based services
- Reduction in API capacity
- Psychiatric boarding - Emergency Departments/Department of Corrections
- Police/Fire resources misused

Crisis Now Model

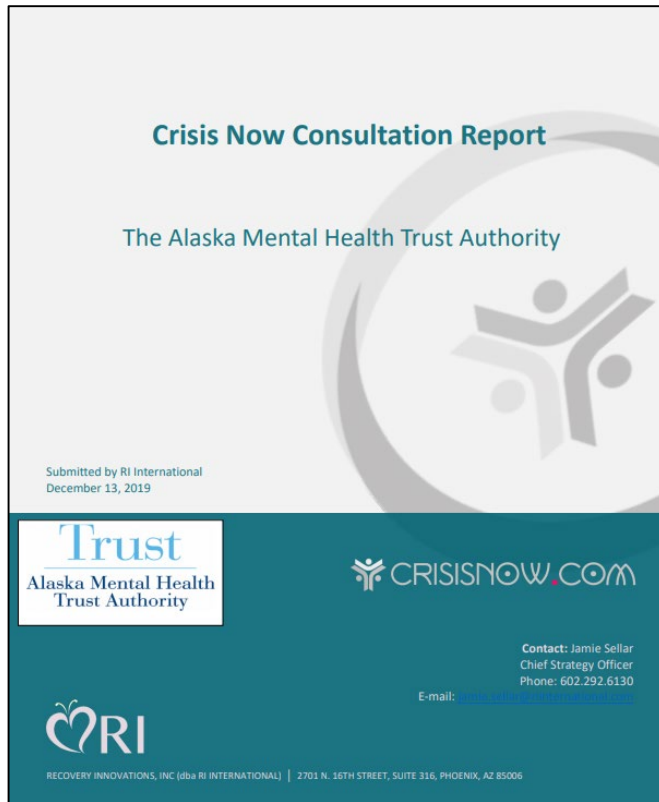
Model includes four elements:

- Regional or statewide crisis call centers coordinating in real time
- Centrally deployed, 24/7 mobile crisis teams
- Short-term, “sub-acute” residential stabilization programs
- Essential crisis care principles and practices



Crisis Now in Alaska

Crisis Now Consultation Report



- System accountability and performance metrics
- Policy considerations
- Funding options including Medicaid
- Implementation of key Crisis Now model elements
- Workforce needs



Improving Alaska's Crisis Continuum of Care

Next Steps for the Trust

- Support alignment statewide
- Statute and policy needs
- Facilitation/support of local planning and implementation
- Capital, equipment, and start-up needs
- Urban and rural Alaska



In the past 25 years,
Trustees have approved
more than

\$355,000,000

to fund more than

3,200

beneficiary serving projects
and more than

8,600

mini grants to beneficiaries
across Alaska



THANK YOU

Questions?