

# Trust

---

Alaska Mental Health  
Trust Authority

## Legislative Presentation House Finance Committee

January 29, 2020

# Trustees

- **Mary Jane Michael**, *Chair*
- **Chris Cook**, *Vice Chair*
- **Ken McCarty**, *Secretary*
- **Verné Boerner**, *Program and Planning Committee Chair*
- **Anita Halterman**, *Audit and Risk Committee Chair*
- **Laraine Derr**, *Finance Committee Chair*
- **John Sturgeon**, *Resource Management Committee Chair*



# Trust Beneficiaries

Beneficiaries include Alaskans who experience:

- Mental illnesses
- Developmental disabilities
- Alzheimer's disease and related dementias
- Traumatic brain injuries
- Substance use disorders

The Trust also works in prevention and early intervention services for individuals at risk of becoming beneficiaries.



# Financial Position

## Trust Invested Assets



# FY21 Earnings and Available Funding

Trust Assets	End of FY19
Corpus	\$458,505,600
Reserves	\$125,913,783
Real Estate Equity	\$61,283,324
<b>Total</b>	<b>\$645,702,707</b>

## Trust's Available Funding FY21

Investment Portfolio Payout (4.25%)	\$24,379,800
Prior Year Funds Carried Forward	\$3,223,079
Land Office Spendable Income (Expected)	\$4,731,900
Interest Earnings	\$736,700
<b>Total</b>	<b>\$33,071,479</b>

## Prior Years' Available Funding

FY20	\$31,776,100
FY19	\$29,437,000
FY18	\$28,908,000
FY17	\$28,234,000

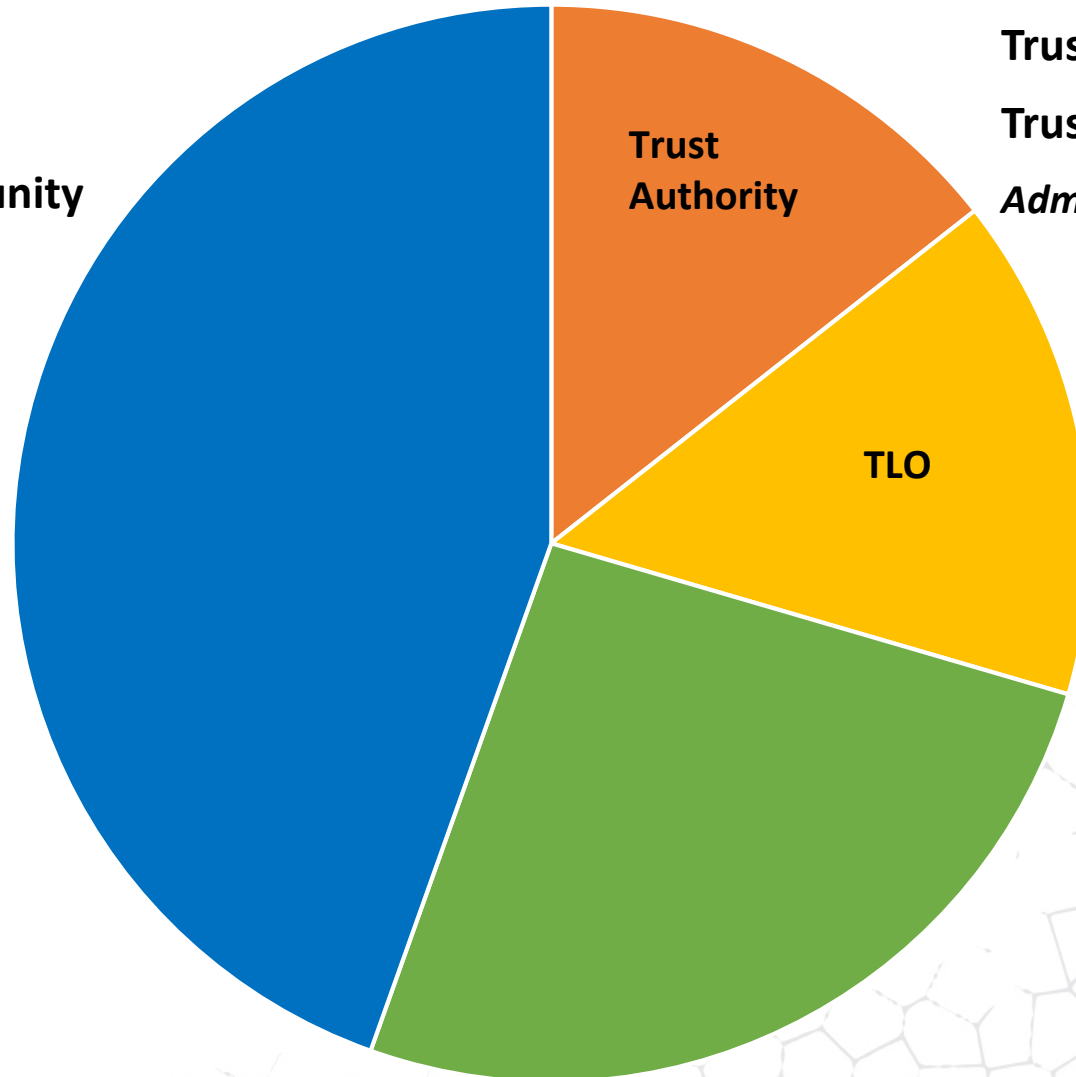
# FY 21 Spending

## Authority Grants

\$13,039.9

Designated grants to community providers, nonprofits, local governments and Tribal organizations

•Includes \$1.7 M in mini grants



## Administrative Budgets

Trust Authority: \$4,215.1

Trust Land Office (TLO): \$4,425.6

*Administrative budget is lower than FY20 levels*

## MHTAAR

\$7,587.5

Designated grants to state agencies, requires receipt authority

# FY 21 GF/MH Recommendations

## GOV Proposed Budget

Trust Proposed Budget	MHTAAR	GF/MH	AHFC	MHTAAR	GF/MH	AHFC
1. <b>**Deferred Maintenance</b>	\$250.0	\$250.0		\$250.0		
2. <b>** Medical Appliances and Assistive Technology</b>		\$500.0			\$500.0	
3. <b>** Coordinated Transportation</b>	\$300.0	\$1,000.0		\$1,300.0		
4. <b>**Homeless Assistance Program</b>	\$950.0	\$850.0	\$6,350.0	\$950.0		\$6,350.0
5. <b>**Special Needs Housing Grant</b>	\$200.0	\$1,750.0	\$1,750.0	\$200.0		\$1,500.0
6. <b>**Home Modifications &amp; Upgrades</b>	\$300.0	\$750.0		\$300.0	\$750.0	
7. <b>Holistic Defense Project, Bethel</b>	\$193.8	\$372.7		\$193.8		
8. <b>IT - Telehealth Service System Improvements</b>	\$38.1	\$63.0		\$38.1		
9. <b>Comprehensive Program Planning Coordinator</b>	\$75.0	\$75.0		\$75.0		
10. <b>** Essential Program Equipment</b>	\$300.0	\$300.0		\$300.0	\$300.0	
<b>** capital budget items</b>						
<b>TOTAL</b>	<b>\$2,606.9</b>	<b>\$5,910.7</b>	<b>\$8,100.0</b>	<b>\$ 3,606.9</b>	<b>\$1,550.0</b>	<b>\$ 7,850.0</b>

# Trust Land Office

- Support Property Sale
- USFS Land Exchange
- Icy Cape Development

## FY 19 Trust Land Office Revenues

Coal	\$14.5
Oil and Gas	\$1,279.5
Minerals	\$840.9
Materials	\$24.8
Timber	\$2,130.1
Land	\$3,594.6
Real Estate	\$2,755.4
<b>Total</b>	<b>\$10,639.9</b>



# 25 Years of Supporting Beneficiaries

- Harborview closure
- Mental Health Court
- Bring the Kids Home
- Medicaid Reform/Expansion



# Medicaid Reform/Expansion

- \$10M investment (SB 74)
- Capacity support to the department
- Administrative Services Organization
- 1115 Waiver development (Behavioral Health and Substance Use Treatment)



# Medicaid Reform Success

## FY2019 DHSS Medicaid Reform Report:

- Estimated \$166M in GF savings and cost avoidance
- Flat state GF spending despite significant enrollment growth
- An increased use of Home and Community Based Service (HCBS) waivers
- 1115 Waiver will lead to continued savings

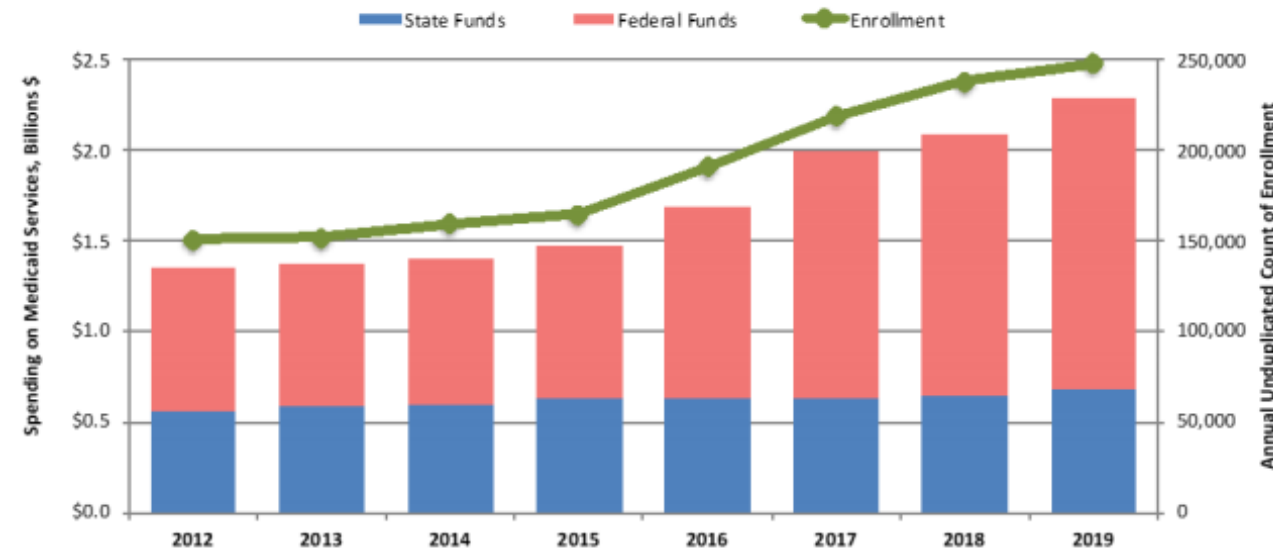
**ANCHORAGE DAILY NEWS**

Politics

**2016 Medicaid reform bill generates huge savings for Alaska, official says**

Author: Elwood Brehmer, Alaska Journal of Commerce • Updated: 1 day ago • Published 1 day ago

**Medicaid Enrollment & Spending in Alaska  
2012 – 2019 Date of Service Actuals**



<sup>1</sup> Evergreen Economics. (November, 2019). Long Term Forecast of Medicaid Enrollment & Spending in Alaska ("MESA"): FY 2020 – FY 2040.

# Psychiatric Crisis Continuum of Care

- Absence of full continuum including community based services
- Reduction in API capacity
- Psychiatric boarding - Emergency Departments/Department of Corrections
- Police/Fire resources misused

# Crisis Now Model

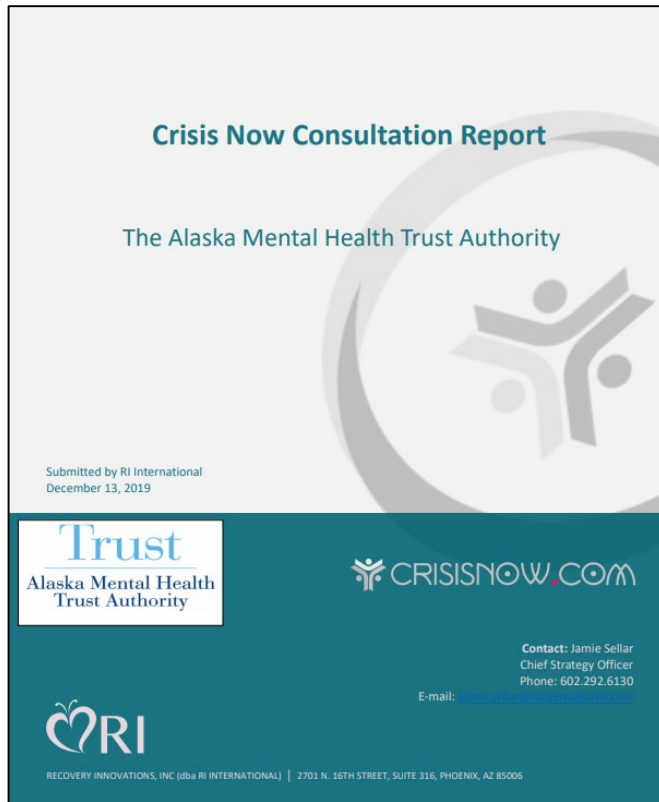
Model includes four elements:

- Regional or statewide crisis call centers coordinating in real time
- Centrally deployed, 24/7 mobile crisis teams
- Short-term, “sub-acute” residential stabilization programs
- Essential crisis care principles and practices



# Crisis Now in Alaska

## Crisis Now Consultation Report



- System accountability and performance metrics
- Policy considerations
- Funding options including Medicaid
- Implementation of key Crisis Now model elements
- Workforce needs



# Improving Alaska's Crisis Continuum of Care

## **Next Steps for the Trust**

- Support alignment statewide
- Statute and policy needs
- Facilitation/support of local planning and implementation
- Capital, equipment, and start-up needs
- Urban and rural Alaska



In the past 25 years,  
Trustees have approved  
more than

**\$355,000,000**

to fund more than

**3,200**

beneficiary serving projects  
and more than

**8,600**

mini grants to beneficiaries  
across Alaska



**THANK YOU**

Questions?