

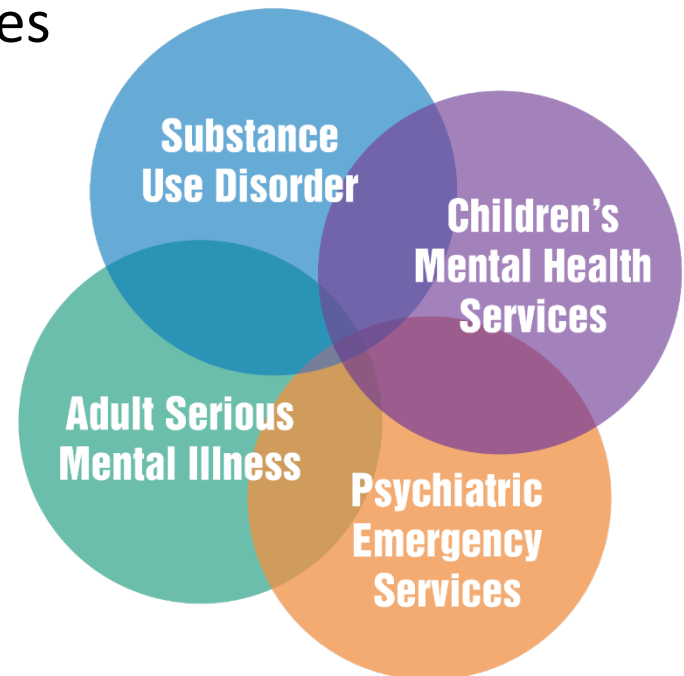


**Gennifer Moreau-Johnson, Director**  
DIVISION OF BEHAVIORAL HEALTH



# Programs and Services

- Prevention & Early Intervention
- Alcohol Safety Action Program
- Tobacco Compliance Unit
- Treatment & Recovery Grants Services
- Behavioral Health Medicaid Services





# Prevention & Early Intervention

Grantees engage community service agencies, schools and other organizations in a collective effort to prevent underage drinking and binge drinking; to prevent suicide; and to encourage community wellness.

**7 of the 18** grantees focus specifically on substance misuse issues-alcohol or both alcohol and drugs

**On the horizon**-a statewide alcohol prevention alliance focusing on alcohol misuse

Grantees use the Strategic Prevention Framework (SPF) as a foundation to guide their efforts.

Strategies are based on local/regional data and identified community need.

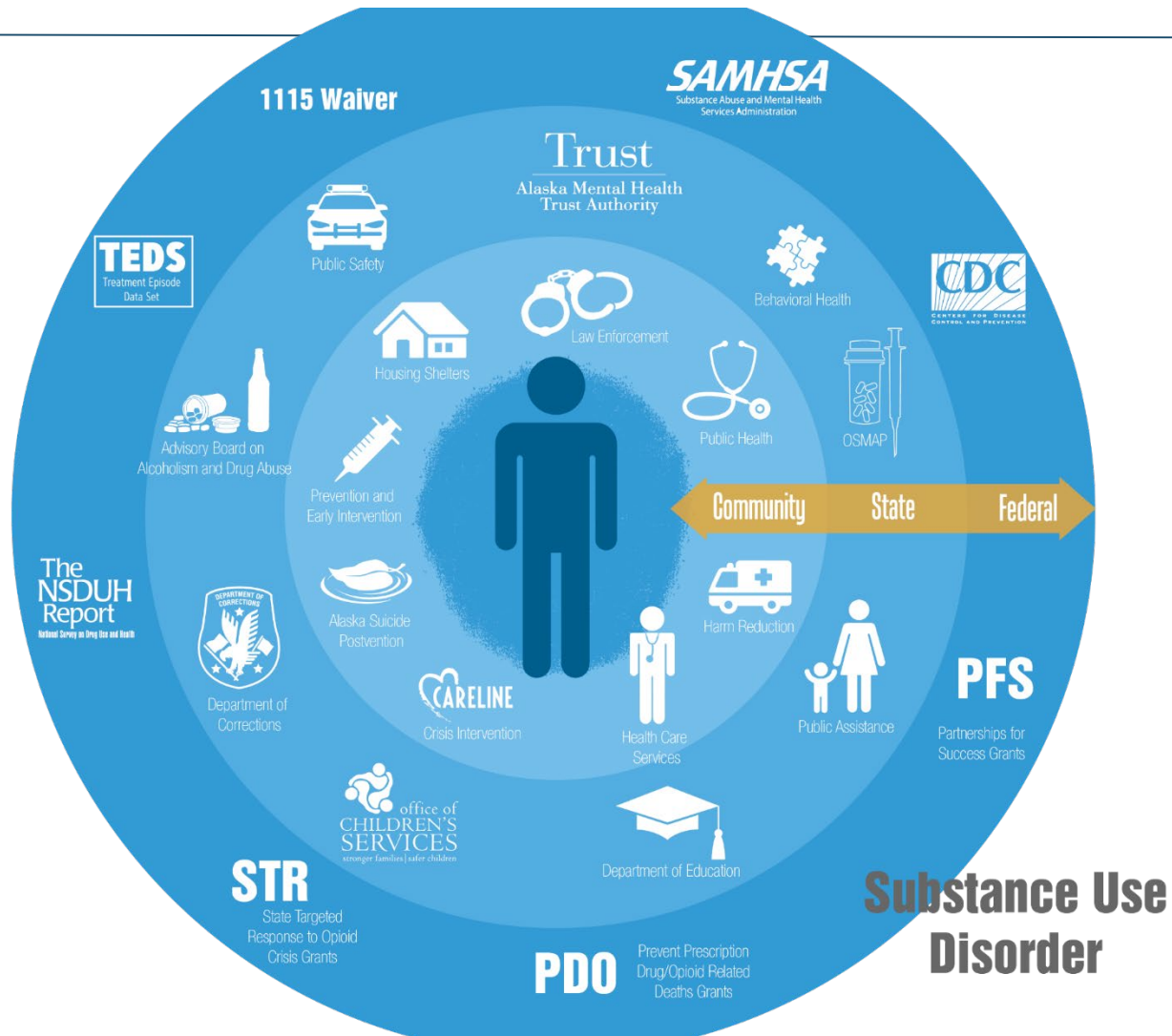
Be(You)-beyondalaska.com

Funders for Be(You) include ANTHC, Mat-Su Health Foundation, Rasmuson, AK Wellness Coalition, the Trust and DBH



# BE (You)-Most AK teens don't drink







# Substance Use Disorder (SUD) Funding for FY 2019

## by Service Area and Program Type

Service Areas	Detox	Opioid	Youth SUD Res	Women and Children SUD Res	Adult SUD Res	Youth and Family SUD Out	Women and Children SUD Out	Adult SUD Out	Therapeutic Court	Other SUD Direct	Other SUD Not Direct	Prevention Programs	Total
Anchorage		\$1,550,692	\$765,597	\$1,062,874	\$3,367,094	\$510,398	\$200,000	\$699,263	\$280,179	\$527,402		\$985,000	\$9,948,499
Bethel					\$835,416			\$234,936			\$1,088,930	\$60,000	\$2,219,282
Copper Center								\$39,566					\$39,566
Cordova						\$33,093		\$92,659					\$125,752
Dillingham					\$77,682			\$23,222				\$124,163	\$225,067
East Aleutian Islands								\$116,390					\$116,390
Fairbanks / Fort Yukon	\$1,341,749	\$1,026,601		\$454,366	\$498,695	\$100,000		\$193,823		\$163,384		\$150,000	\$3,928,618
Juneau	\$54,696	\$455,000			\$442,543	\$148,065		\$301,384			\$85,840	\$265,723	\$1,753,251
Kenai / Soldotna	\$1,015,000	\$554,568			\$100,000	\$91,323	\$74,146	\$485,495					\$2,320,532
Ketchikan / Metlakatla					\$10,000	\$5,005		\$63,090					\$78,095
Kodiak								\$113,418				\$110,000	\$223,418
Kotzebue								\$939,618				\$60,000	\$999,618
McGrath								\$6,909					\$6,909
Nenana								\$16,014					\$16,014
Nome								\$768,694			\$100,000	\$135,000	\$1,003,694
Palmer / Wasilla					\$1,059,197	\$163,196	\$163,197	\$209,941	\$150,000	\$305,288		\$210,000	\$2,260,819
Petersburg / Wrangell		\$109,552						\$275,165					\$384,717
SEARHC Region			\$190,144					\$204,772					\$394,916
Seward								\$139,204		\$110,000		\$60,000	\$309,204
Sitka		\$144,972			\$109,225	\$50,000	\$50,000	\$50,000					\$404,197
TCC Region					\$282,491			\$146,786			\$1,000,000		\$1,429,277
Utqiagvik								\$151,500					\$151,500
Valdez								\$113,479					\$113,479
West Aleutian / Pribilofs								\$104,419					\$104,419
Other Statewide Grants											\$42,695		\$42,695
TOTAL:	\$2,411,445	\$3,841,385	\$955,741	\$1,517,240	\$6,782,343	\$1,101,080	\$487,343	\$5,489,747	\$430,179	\$1,106,074	\$2,317,465	\$2,159,886	\$28,599,928

**Other SUD Direct Services**

- Substance Use Disorder Treatment for OCS Engaged Families
- Permanent Supportive Housing Intensive Case Management

**Other SUD Not Direct Services**

- Chemical Dependency Professionals Certification
- SUD Planning Grant for Building a Treatment Center
- Sobering Center
- Bethel Community Service Patrol

**Prevention Programs**

- Alcohol Safety Action Program (Adult & Juvenile)
- Recidivism Reduction

**Program Type**

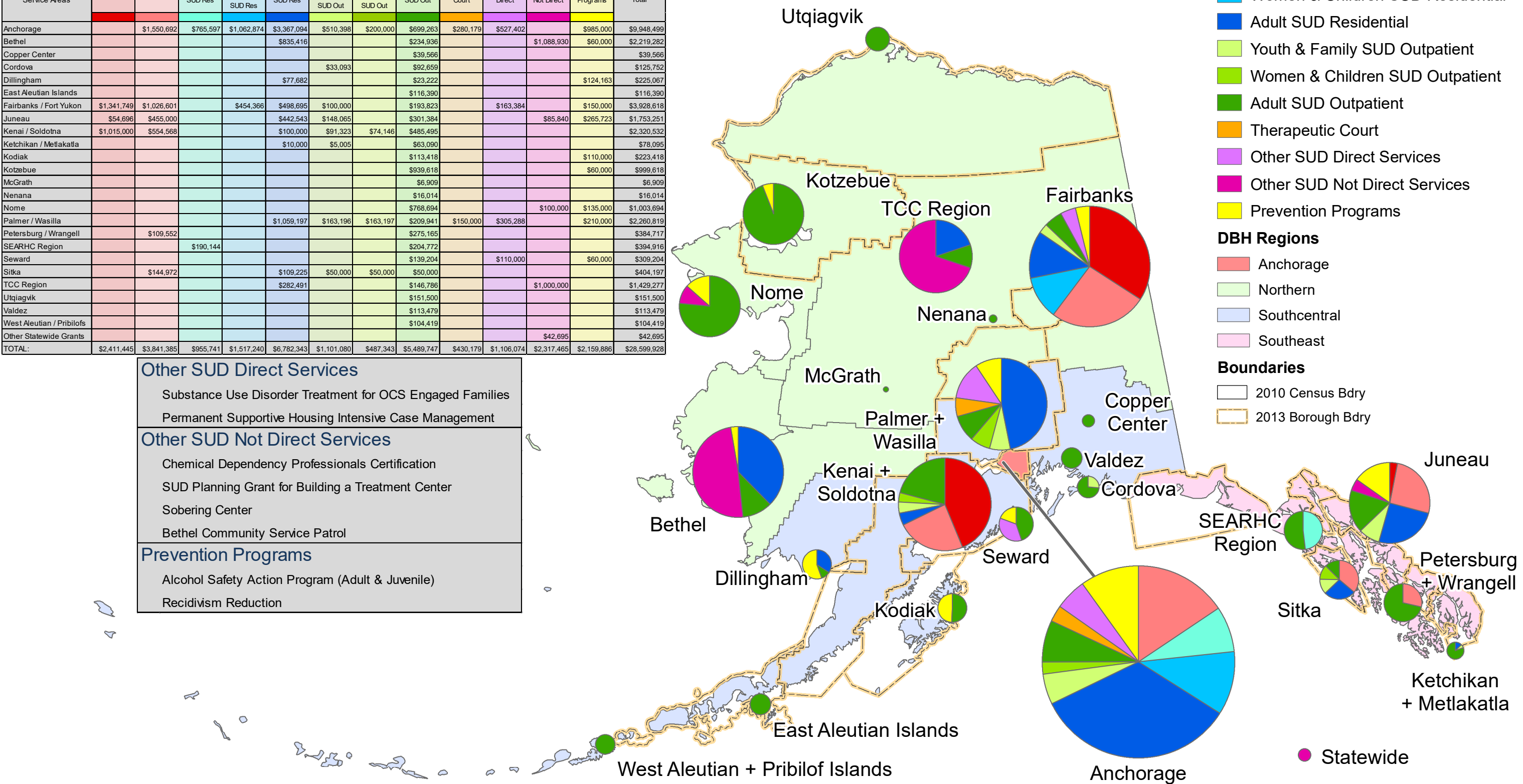
- Withdrawal Management (Detox)
- Opioid Treatment
- Youth SUD Residential
- Women & Children SUD Residential
- Adult SUD Residential
- Youth & Family SUD Outpatient
- Women & Children SUD Outpatient
- Adult SUD Outpatient
- Therapeutic Court
- Other SUD Direct Services
- Other SUD Not Direct Services
- Prevention Programs

**DBH Regions**

- Anchorage
- Northern
- Southcentral
- Southeast

**Boundaries**

- 2010 Census Bdry
- 2013 Borough Bdry





# Infrastructure Analysis

Division of Behavioral Health and Office of Children Services

Supported with funding from the Mental Health Trust Authority

Anchorage/Mat-Su

Fairbanks

Soldotna/Homer

Nome/Kotzebue

Utgavik

Bethel

Juneau

Sitka

Ketchikan

Kodiak

Dillingham



# 1115 Waiver

Creates services that identify unhealthy substance use BEFORE it becomes a problem

Screen in General  
Healthcare Settings

Sub-acute Community  
Services

Youth

Targeted acute Services  
focused on families and  
population specific

Return on Investment





*Thank You!*