

NOME

Benefits of an Arctic Deep Draft Port

Transportation Committee
Alaska State House of Representatives
April 2019

Mayor Richard Beneville



Nome, Alaska

- Incorporated in 1901
- 3,800 residents
- Daily jet service – regional charter and commuter flights
- Level-four trauma center
- State-of-the-art fiber communications



Arctic Deep Draft Port Study - Site Selection

- A total of 13 locations were evaluated by the Corps of Engineers and Alaska DOT in the 2011-2015 Alaska Deep Draft Arctic Port Study
- Nome was selected as the most cost-effective location for initial investigation and investment
- Site selection was based on:
 - Existing Port Infrastructure
 - Intermodal Connections
 - Uplands Support
 - Water Depth
 - Navigation Accessibility



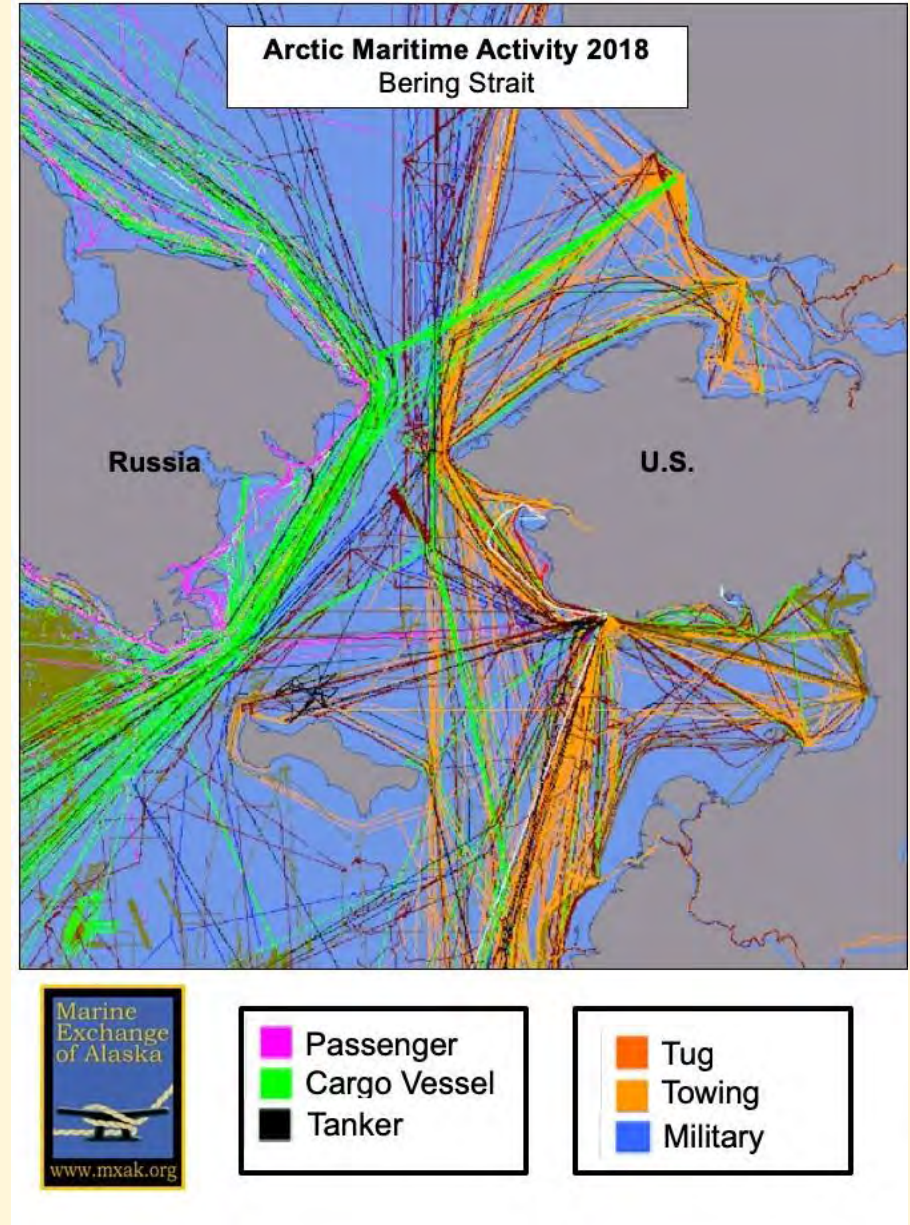
PORT OF NOME MODIFICATION FEASIBILITY STUDY

- 2016 WIIN Act provided new provisions to allow the Nome Arctic Port Study to proceed:
 - Remote & Subsistence Harbor authority allows the Corps to include non-economic factors in the study and design of projects in the region
 - Requires that the Army Corps consult with DOD and the Coast Guard to “identify national security benefits associated with an Arctic deep draft port”, and authorizes the Corps to consider such benefits in “determining whether an Arctic deep draft port is feasible”.
- New authorities enabled the Corps to execute a cost-share agreement with the City of Nome for further investigation of an Arctic Deep Draft Port. (Study schedule shown in table.)

SCHEDULE / MILESTONES 24-MONTH	
MILESTONE	DATE
FCSA Execution	02 Feb 2018
Alternatives Milestone	27 Jun 2018
Tentatively Selected Plan	08 Mar 2019
Agency Decision Milestone	Aug 2019
MSC Transmittal of Final Report	Mar 2020
Chief’s Report Signed	Jun 2020

Benefits of developing maritime infrastructure in the U.S. Arctic

- Supports the people and communities in the region
- Addresses elements of increasing maritime traffic
- Responds to growing strategic interest in the region
- Supports development of significant natural resource potential
- Prepares for unique marine environmental challenges
- Captures benefits at regional, state and federal levels, namely in the protection of:
 - National Security
 - Life Safety
 - Environmental Safety
 - Economic Viability
 - Sustaining Culture



Accommodate Larger Tour Ships

- Smaller/adventure cruise vessels have regularly called on Nome (since 1991)
- The 820-foot Crystal Serenity called on Nome in 2016 and 2017 (top right)
- 2019 schedule has 8 vessels visiting Nome, totaling 11 calls, with 3 large ships at anchor.
- There is growing interest in Arctic tourism, with more ice-hardened vessels presently under construction and expected to schedule port calls at Nome.



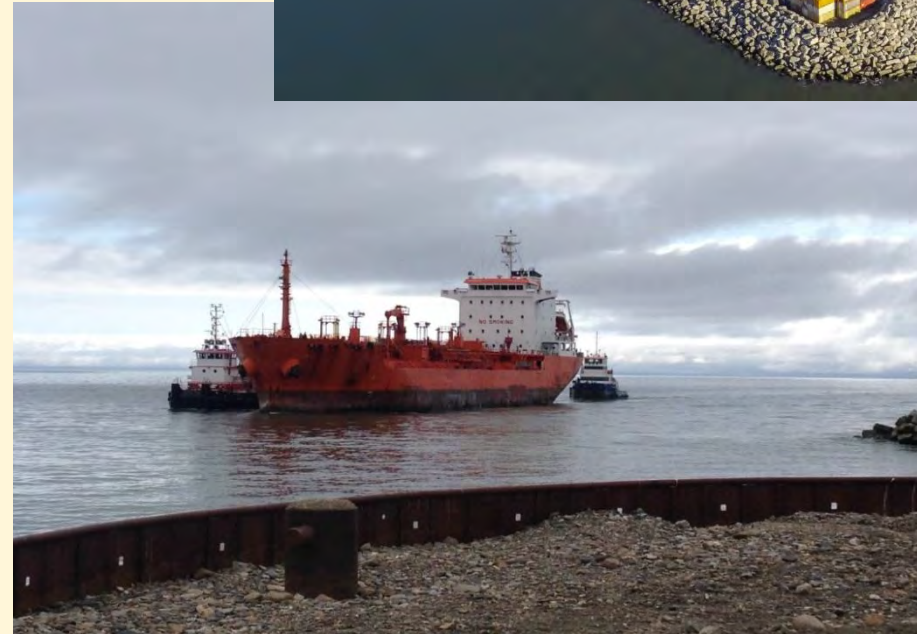
Arctic Research and Resource Development Benefits

- Research
 - Enhance mission support of increasing Arctic research
- Industrial Support
 - Oil & gas
 - Mining
- Fuel and Food Security
 - A depth-limited port results in potential risk for entire region
 - Supports mitigation of marine mammal impacts



Protection of Environment/Marine Life Benefits

- Economic/Cultural Sustainability
 - Increased economic opportunity
 - Assist in reducing the cost of living by lowering transportation costs
 - Increased environmental/life-safety capacity will help preserve cultures in rural Alaska
- Environmental Safety
 - Port expansion increases environmental protection
 - Mitigating release of petroleum/chemicals
 - Proximity to Arctic Ocean and Bering Sea



National Security/Mariner Safety (Benefit)

- National Security

- Strengthen U.S. presence for increased foreign vessel activity
- Keep pace with Russia's Arctic infrastructure development and operations in the region
- Provide critical refueling and resupply port for U.S. Coast Guard and Navy

- Life Safety

- Enable Coast Guard to operate more efficiently in Arctic region with base support
- With nearly double the maritime activity, response capacity has not increased
- Allow for increased role as a port of refuge



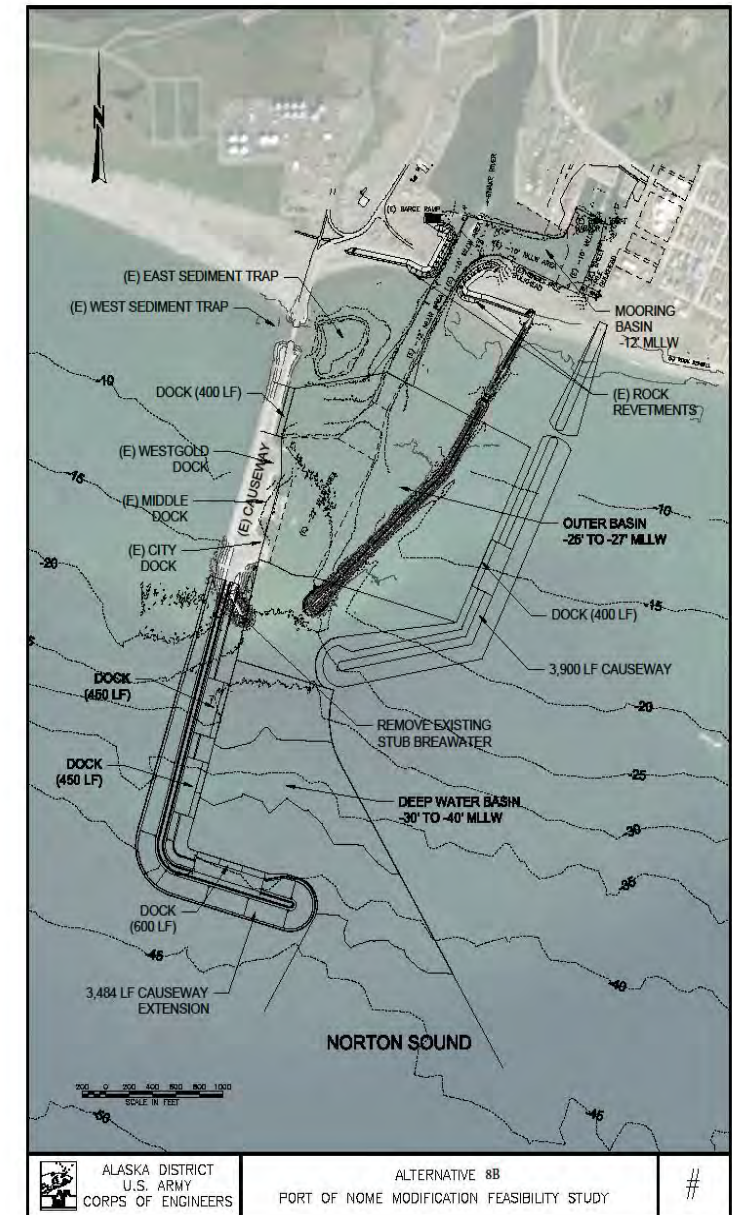
Port of Nome Shore-Based Infrastructure Development

- Nome's Strategic Development Plan
 - 34 acres of laydown property available for use
 - 16 acres in development – more in planning phase
 - Moorage expansion area fully permitted and designed
 - This will mitigate congestion in Small Boat Harbor
 - Haulout facilities currently being upgraded/expanded
 - Alaska DOT Port Rd. Improvements scheduled for 2021
- Port Reception Facilities
 - Federal, state, regional and local stakeholders should work together to accelerate construction of port facilities that meet IMO Polar Code regulations to service U.S. vessels as well as international traffic
- Minimizing operational discharges helps
 - Protect Arctic marine environment for subsistence hunting and fishing
 - Enhance maritime operations by extending vessel duration in the region



Arctic Deep Draft Port – Path Forward

- Feasibility Study – Tentatively Selected Plan
 - Extend Causeway 3,500 ft., construct 3 docks in deep basin dredged to 40' MLLW
 - Remove breakwater, construct new 3,900 ft. Causeway with ship dock
 - Dredge existing outer basin to -28' MLLW
- Project Delivery Schedule
 - Chief's Report scheduled to Congress in June 2020
 - WRDA 2018 allows project to move into design upon signed Chief's Report
 - Congress is expected to authorize the project in WRDA 2020 in FY2021-2022
 - Project bid and construction could start as early as 2023 and last through 2027



Building an Arctic Deep Draft Port at Nome

- The City of Nome requests project support from the Alaska State Legislature:
 - To assist in bringing economic development to the region to support jobs for Alaskan residents
 - To assist in sustaining the Alaska Native culture by protecting marine food resources and the environment
 - To attract investment capital in maritime infrastructure development through a variety of P3 agreements
 - To assist in generating long-term economic benefits to the region, the state and the nation
 - To capitalize on opportunities to develop the Arctic's natural resources while sustaining the environment
 - To provide suitable maritime infrastructure for Arctic tour ships – attracting more ships to the state

Jan 2012 - Nome Winter Fuel Delivery

QUESTIONS?

Transportation Committee
Alaska State House of Representatives
April 2019

