



Alaska Department of Transportation & Public Facilities

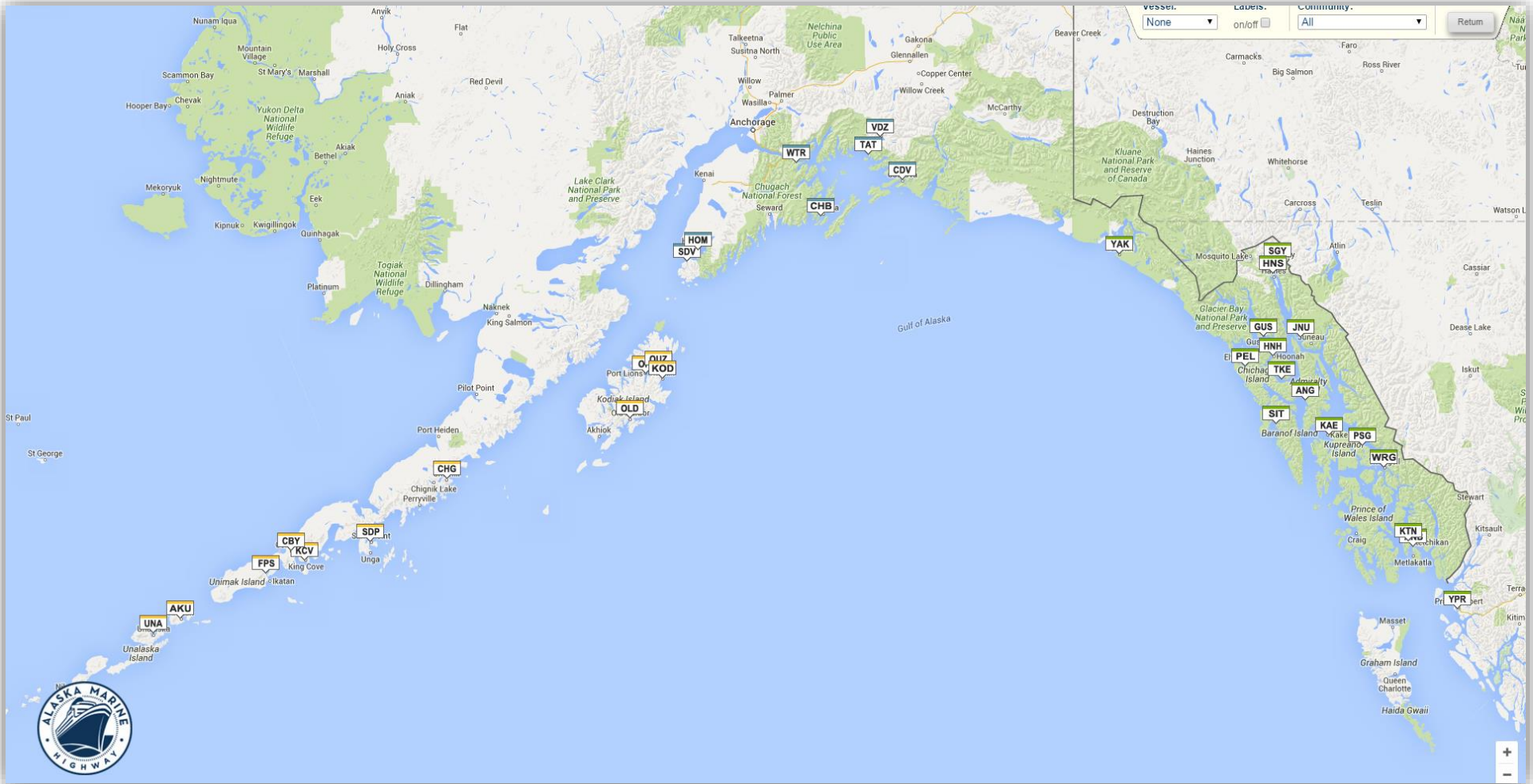
Alaska Marine Highway System (AMHS) Overview

Mary Siroky, DOT&PF Deputy Commissioner
Matt McLaren, AMHS Business Enterprise & Development Manager

April 10, 2019

Our mission is to **Keep Alaska Moving** through service and infrastructure.

AMHS Ports of Call



33 Alaskan Communities, Prince Rupert, & Bellingham

AMHS Port and Vessel Codes

Communities

ANB = Metlakatla (Annette Bay)
AKU = Akutan
ANG = Angoon
BEL = Bellingham, WA
CBY = Cold Bay
CDV = Cordova
CHB = Chenega Bay
CHG = Chignik
FPS = False Pass
GUS = Gustavus
HNS = Haines
HNH = Hoonah
HOM = Homer
JNU = Juneau (Auke Bay)
KAE = Kake
KCV = King Cove
KOD = Kodiak
KTN = Ketchikan

Communities

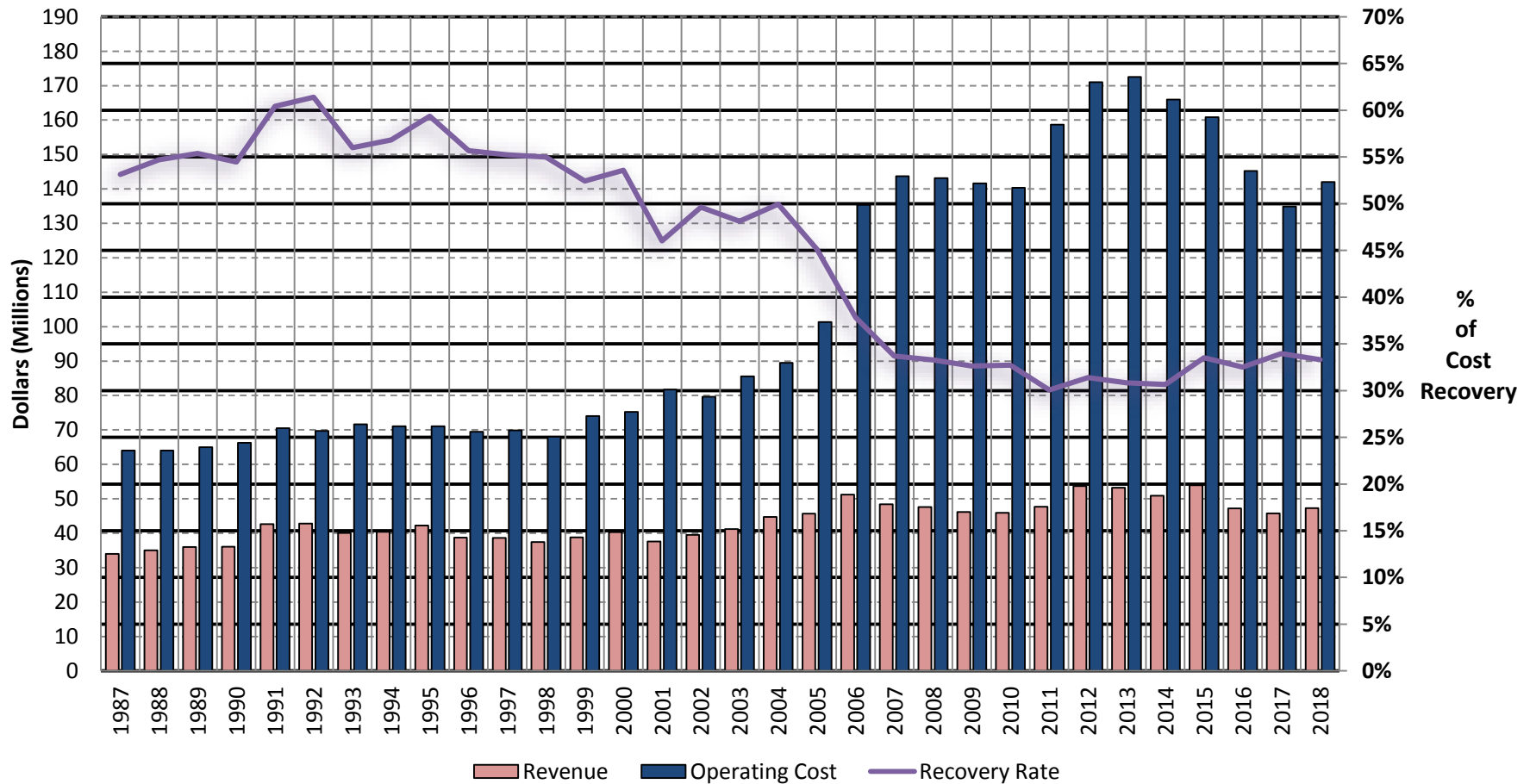
OLD = Old Harbor
ORI = Port Lions
OUZ = Ouzinkie
PEL = Pelican
PSG = Petersburg
SDP = Sand Point
SDV = Seldovia
SGY = Skagway
SIT = Sitka
TAT = Tatitlek
TKE = Tenakee
UNA = Unalaska/
Dutch Harbor
VDZ = Valdez
WRG = Wrangell
WTR = Whittier
YAK = Yakutat
YPR = Prince Rupert, BC

Ships

| | |
|-----|--------------------|
| AUR | M/V Aurora |
| CHE | FVF Chenega |
| COL | M/V Columbia |
| FWX | FVF Fairweather |
| KEN | M/V Kennicott |
| LEC | M/V LeConte |
| LIT | M/V Lituya |
| MAL | M/V Malaspina |
| MAT | M/V Matanuska |
| TUS | M/V Tustumena |
| TAZ | M/V Tazlina |
| M/V | Motor Vessel |
| FVF | Fast Vehicle Ferry |

Historical Revenue and Operating Cost

AMHS Fare Box Recovery Rate 1987-2018



Economic Impacts

Chart ES-2. Number of AMHS Trips Booked by Community of Residence, Top 10, 2014

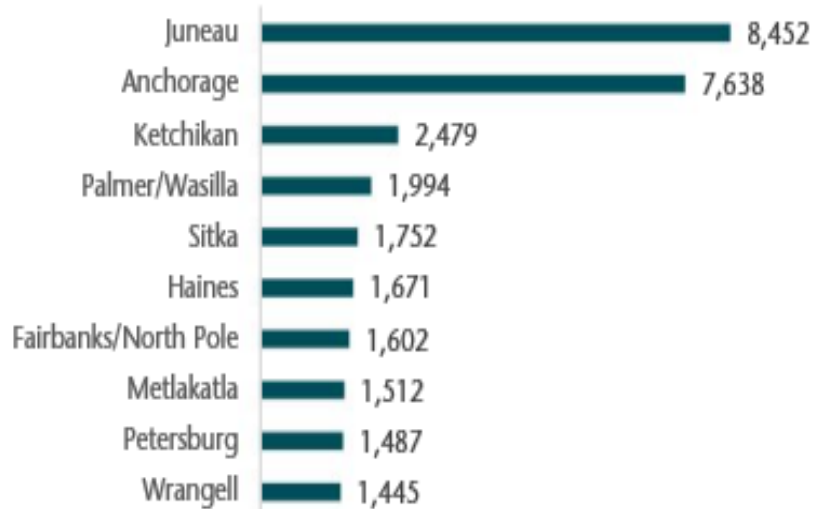
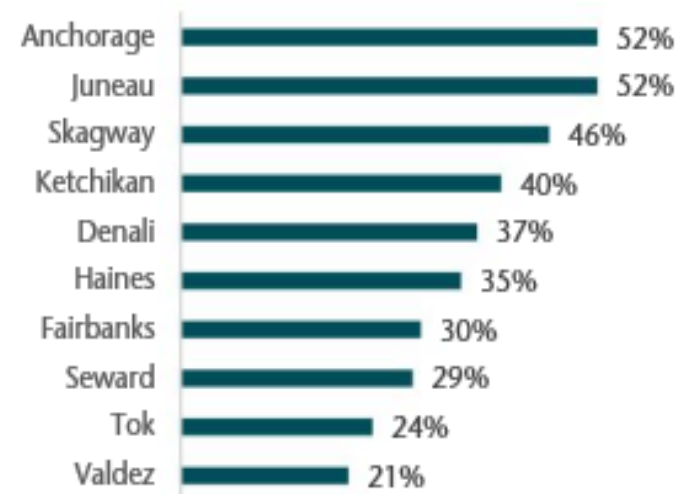


Chart ES-3. Top Ten Destinations of AMHS Visitors, Summer 2011



Source: *Economic Impacts of the Alaska Marine Highway System*, McDowell Group, January 2016

FY2020 Governor's 2/13 Budget

Published summer schedule remains intact through the end of August

September 1, 2019 through September 30, 2019, operate:

- Matanuska and Malaspina on their Bellingham and SE Alaska runs
- Tazlina in Northern Lynn Canal
- Lituya from Ketchikan – Annette Bay
- **No service to Homer, Kodiak, Aleutian Chain, Whittier, Cordova, Valdez, Chenega Bay, Tatitlek, Yakutat, Prince Rupert, Angoon, Tenakee, Pelican, Hoonah, and Gustavus**
- **Vessels in Layup: Chenega, Fairweather, Kennicott, Columbia, Tustumena, Aurora, LeConte, and Hubbard**

October 1, 2019, through June 30, 2020:

- **No Service**
- **Vessels in Layup: All vessels**

This schedule provides 84.8 weeks of service with a potential fare box recovery rate of 40%.

UGF: \$21,825.8

DGF*: \$17,869.3 (Revenues)

Motor Fuel Tax Fund: \$3,617.1

CIP Receipts: \$1,893.7

*Includes DOT&PF Support Services

Expenditure Authorization: \$45,205.9

Generated Revenue: \$17,869.3

Net Deficit Amount: (\$27,336.6)



Outsourcing Service

Per the Collective Bargaining Agreements with the vessel unions, service to the following ports could be outsourced by the State with service to/from Sitka, Juneau and Petersburg:

- **Angoon**
- **Gustavus**
- **Kake**
- **Hoonah**
- **Tenakee**
- **Pelican**



Example Scenario 1

Potential Outsourced Service Schedule

- **Sitka – Angoon – Hoonah – Juneau**
 - **One day per week, every other week**
- **Juneau – Hoonah – Angoon – Sitka**
 - **One day per week, every other week**
- **Juneau – Gustavus – Juneau**
 - **One day per week, every other week**
- **Pelican and Tenakee**
 - **One port call per month**

FY2020 AMHS Example Scenario 1

Add Oct-June Outsourcing Villages of SE Panhandle

Published summer schedule remains intact through the end of August

September 1, 2019 through September 30, 2019, operate:

- Matanuska and Malaspina on their Bellingham and SE Alaska runs
- Kennicott on the Bellingham – Whittier Cross-gulf run
- Tustumena on the Homer-Kodiak/Aleutian Chain run
- Tazlina in Northern Lynn Canal
- Lituya from Ketchikan – Annette Bay
- Outsourced Service to SE Villages – three days, every other week
- Vessels in Layup: Chenega, Fairweather, Columbia, LeConte, Aurora, Hubbard

October 1, 2019 through March 31, 2020, operate:

- Matanuska on the Bellingham run
- Tustumena on the Homer – Kodiak Island and Cordova - Valdez
- Tazlina in Northern Lynn Canal
- Lituya from Ketchikan – Annette Bay
- Outsourced Service to SE Villages – three days, every other week
- No service to Prince Rupert or Whittier
- Vessels in Layup: Chenega, Fairweather, Kennicott, Malaspina, LeConte, Columbia, Aurora, Hubbard

April 1, 2020, through June 30, 2020, operate:

- Matanuska and Malaspina on the Bellingham run
- Kennicott on the Juneau – Whittier Cross-gulf run
- Tustumena on the Homer-Kodiak Island run with one Aleutian Chain run
- Hubbard in Prince William Sound
- Tazlina in Northern Lynn Canal
- Lituya from Ketchikan – Annette Bay
- Outsourced Service to SE Villages – three days, every other week
- No service to Prince Rupert
- Vessels in Layup: Chenega, Fairweather, LeConte, Columbia, Aurora

This schedule provides 288.8 weeks of service, including the outsourced service with a potential fare box recovery rate of 50%.

Note: There will be gaps in service while the vessels undergo their required annual COI overhauls.

UGF: \$41,605.9

DGF*: \$47,358.9 (Revenues)

Motor Fuel Tax Fund: \$3,617.1

CIP Receipts: \$1,893.7

*Includes DOT&PF Support Services

Expenditure Authorization: \$94,475.6

Generated Revenue: \$47,358.9

Net Deficit Amount: (\$47,116.7)



FY2020 AMHS Example Scenario 2

Add Oct-June AMHS Operating to Villages of SE Panhandle

Published summer schedule remains intact through the end of August

September 1, 2019 through September 30, 2019, operate:

- Matanuska and Malaspina on their Bellingham and SE Alaska runs
- Kennicott on the Bellingham – Whittier Cross-gulf run
- Tustumena on the Homer-Kodiak/Aleutian Chain run
- Tazlina in Northern Lynn Canal
- Lituya from Ketchikan – Annette Bay
- No service to Angoon, Tenakee, and Pelican due to LeConte's required overhaul
- Vessels in Layup: Chenega, Fairweather, Columbia, Aurora, Hubbard

October 1, 2019 through March 31, 2020, operate:

- Matanuska on the Bellingham run
- Tustumena on the Homer – Kodiak Island and Cordova - Valdez
- Lituya from Ketchikan – Annette Bay
- LeConte - Dayboat service to Northern Lynn Canal, SE Panhandle, and Sitka
- No service to Prince Rupert or Whittier
- Vessels in Layup: Chenega, Fairweather, Kennicott, Malaspina, Columbia, Aurora, Tazlina, Hubbard

April 1, 2020, through June 30, 2020, operate:

- Matanuska and Malaspina on the Bellingham run
- Kennicott on the Juneau – Whittier Cross-gulf run
- Tustumena on the Homer-Kodiak Island run with one Aleutian Chain run
- Hubbard in Prince William Sound
- Tazlina in Northern Lynn Canal
- Lituya from Ketchikan – Annette Bay
- LeConte - Dayboat service to SE Villages and Sitka
- No service to Prince Rupert
- Vessels in Layup: Chenega, Fairweather, Columbia, Aurora

This schedule provides 283.9 weeks of service with a potential fare box recovery rate of 50%.

Note: There will be gaps in service while the vessels undergo their required annual COI overhauls.

UGF: \$43,124.7

DGF*: \$48,120.5 (Revenues)

Motor Fuel Tax Fund: \$3,617.1

CIP Receipts: \$1,893.7

*Includes DOT&PF Support Services

Expenditure Authorization: \$96,756.0

Generated Revenue: \$48,120.5

Net Deficit Amount: (\$48,635.5)



Scenario Comparison

| | FY2020 Governor 2/13 Budget | | FY2020 Example Scenario 1 Add Oct-June Outsourcing Villages of SE Panhandle | | FY2020 Example Scenario 2 Add Oct-June AMHS Operating to Villages of SE Panhandle |
|--|--|--|--|--|--|
| July - August | Operate current published schedule | | Operate current published schedule | | Operate current published schedule |
| September | No service in SW Alaska, Prince William Sound, Prince Rupert, and SE Alaska Villages | | Some service to all ports | | No service to Angoon, Tenakee, and Pelican (Due to LeConte's required annual overhaul) |
| October - March | No service | | Some service to all ports except Prince Rupert and Whittier | | Some service to all ports except Prince Rupert and Whittier |
| April - June | No service | | Some service to all ports except Prince Rupert | | Some service to all ports except Prince Rupert |
| Service Weeks (incl. outsourcing weeks) | 84.8 | | 288.8 | | 283.9 |
| Fare Box Recovery | 40% | | 50% | | 50% |
| Funding Sources | UGF: \$ 21,825.8 DGF: 17,869.3 Mtr Fuel Tax: 3,617.1 CIP Rcpts: 1,893.7 Total: \$ 45,205.9 | | UGF: \$ 41,605.9 DGF: 47,358.9 Mtr Fuel Tax: 3,617.1 CIP Rcpts: 1,893.7 Total: \$ 94,475.6 | | UGF: \$ 43,124.7 DGF: 48,120.5 Mtr Fuel Tax: 3,617.1 CIP Rcpts: 1,893.7 Total: \$ 96,756.0 |
| Net Deficit Amount | (\$27,336.6) | | (\$47,116.7) | | (\$48,635.5) |

Example Scenario Route Comparison Summer 2019 - Southeast

Scenario 1



Scenario 2



Example Scenario Route Comparison Summer 2019 - Southwest

Scenario 1



Scenario 2



Example Scenario Route Comparison Winter 2019/2020 - Southeast

Scenario 1

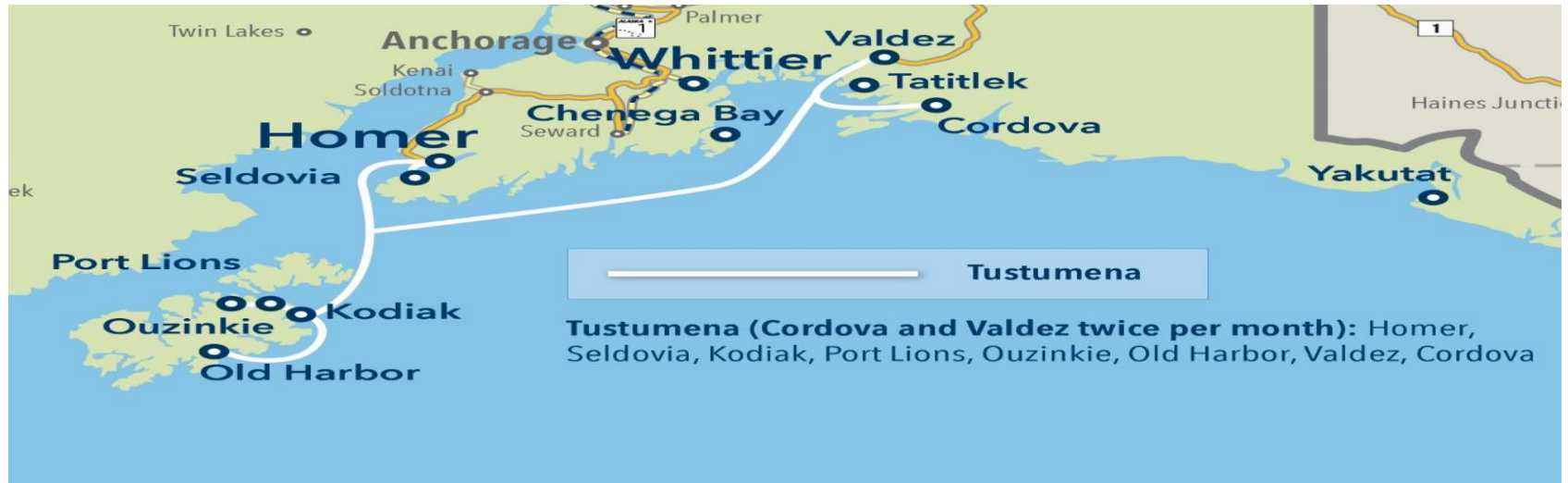


Scenario 2



Example Scenario Route Comparison Winter 2019/2020 - Southwest

Scenario 1



Scenario 2



Example Scenario Route Comparison Summer 2020 - Southeast

Scenario 1



Scenario 2



Example Scenario Route Comparison Summer 2020 - Southwest

Scenario 1




Scenario 2





Thank You



Mary Siroky
DOT&PF Deputy Commissioner
(907) 465-3900
Mary.Siroky@alaska.gov

Matt McLaren
**AMHS Business Enterprise &
Development Manager**
(907) 228-7274
Matt.McLaren@alaska.gov



Clear day aboard M/V Aurora crossing the Prince William Sound. Photo by Alex Surnin, Alaska DOT&PF

4/10/2019

18