

# Reentry Services: Promoting Safer & Healthier Communities

---

HOUSE JUDICIARY COMMITTEE PRESENTATION

APRIL 3, 2019

# Reentry Background

---

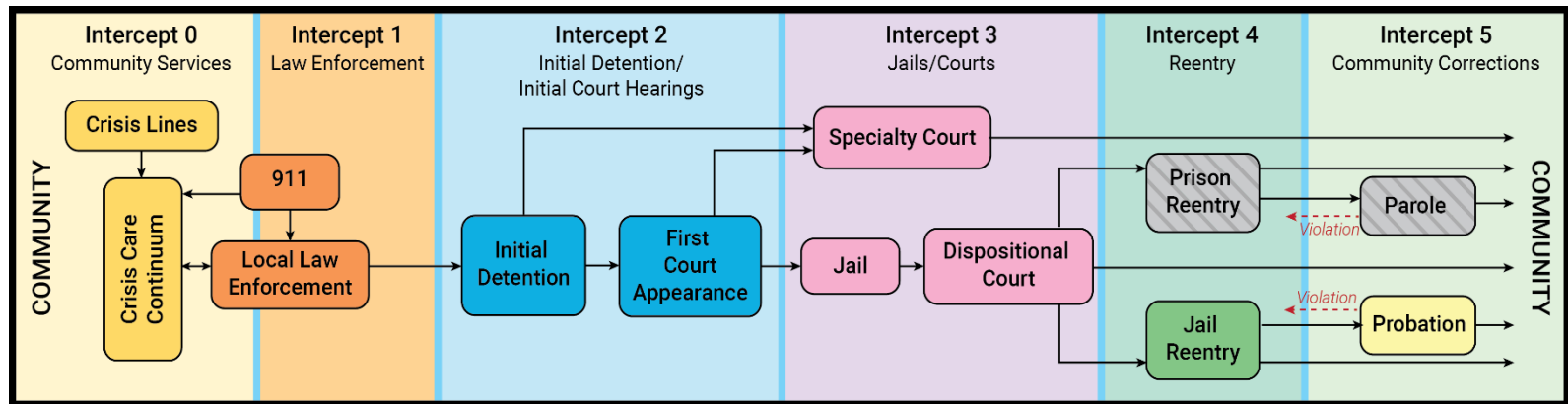
- 95% of all prisoners will eventually return to 'the streets,' if not their home community, then another Alaskan community
- Reentering persons often have substance abuse and mental health diagnoses which interfere with functionality
- Reentering persons are often without housing and employment
- Family ties may have been diminished by non-contact or by their relocation
- But when support services are frontloaded for medium to high risk individuals they are more likely to stay out rather than return to prison

# What do we mean by “reentry”?

---

- Person leaves correctional facility where they have been incarcerated
- After completing a sentence of imprisonment
- He or she may be under supervision (probation, parole) but not always, and especially not if the sentence was for misdemeanor crime(s)
- Their return is to a community, but not necessarily their home community

# Sequential Intercept Model (SIM)



© 2016 Policy Research Associates, Inc.

“Successful reentry begins on admission and continues through incarceration, release, community supervision and ultimately the unsupervised and successful reintegration [of the individual] into the community.”

# - History -

## Statewide Reentry Efforts

---

- 1) 2010 DOC formed statewide Prisoner Reentry Task Force but recognized that reentry needs had to be locally developed and met
  - ❑ Grassroots reentry coalitions (Anchorage, Juneau, e.g.) formed led by community members, probation officers and others
- 2) 2015 Recidivism Reduction Plan
- 3) FY16 Mental Health Trust provided funding support for 4 reentry coalitions
- 4) Spring 2017, additional reentry coalitions form (Dillingham, Kenai, Ketchikan, Nome)
- 5) Spring 2017 the Depts. of Corrections, Health & Social Services and the Trust partnered create vision collaboration between the State and the community to support reentrants

# Roles of a Reentry Coalition

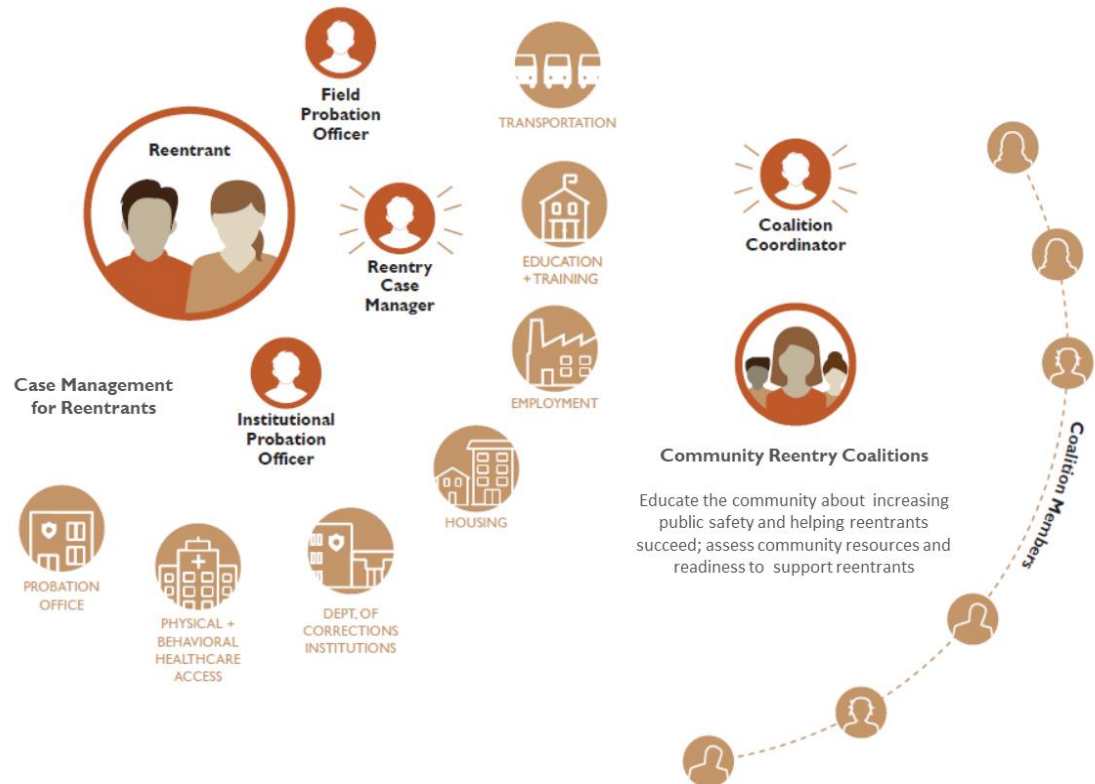
Educate the community about the justice system and the reentry program,

Identify local challenges facing reentrants,

Identify local gaps in reentry services and identify collaborative solutions to build capacity in the community, and

Serve as the local point of contact for the DOC and its partners in reducing recidivism.

## From Incarceration to Communities



# Local Reentry Coalitions





## 1 Direct Service

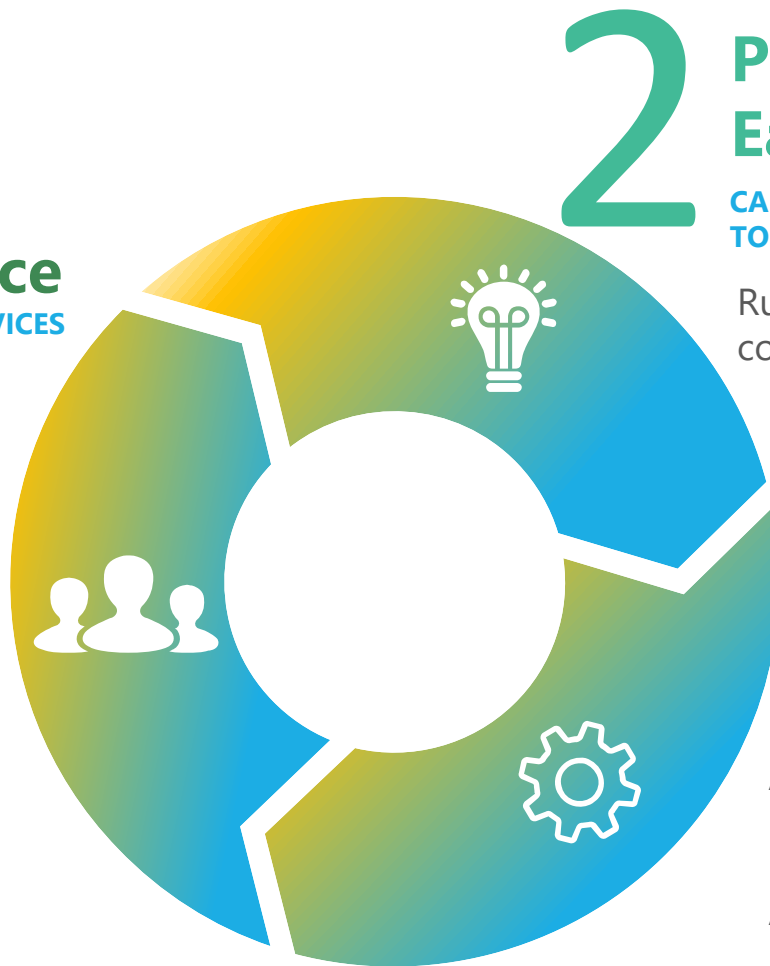
### ACCESS TO SERVICES

Reentry Case Management

Reentry Center

Alaska Medicaid  
Coordinated Care Initiative

Alaska Housing Finance  
Corporation Returning  
Home Vouchers



## 2 Prevention and Early Intervention

### CAPACITY BUILDING FOR ACCESS TO SERVICES

Rural community reentry coalitions

## 3 Program Infrastructure

### EVIDENCE-BASED PRACTICE

AKAIMS Module data-tracking  
(reentry/therapeutic courts)

ACOMS Reentry Pre-Release Referral  
Module (case management)

Vivitrol Study (DOC – Behind the Walls  
/ Community treatment)

Medicaid Enrollment

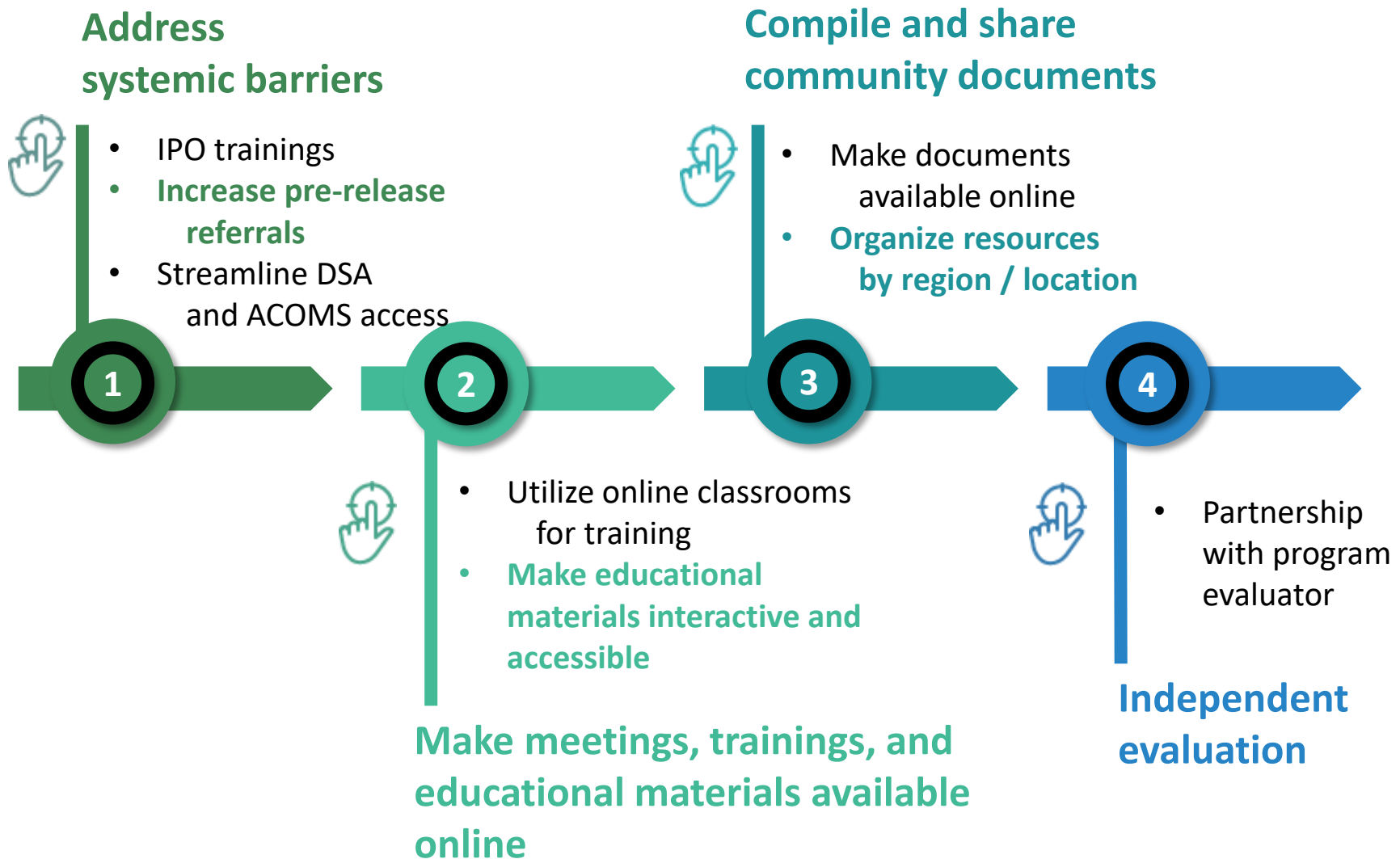
# Division of Behavioral Health & Community Reentry Supports

Supports local, community-based staff in planning and coordination of services for medium to high-risk felony offenders, high-risk misdemeanants, and sex offenders

Case Management | Pre-release & Post-release community-based referrals (treatment, housing, employment) | Transitional supports



**Fairbanks**  
**Juneau**  
**Bristol Bay**  
**Mat-Su**  
**Anchorage**



# Juneau Reentry Coalition

---

- The Juneau Reentry Coalition's (JREC) mission is to, *“promote public safety by identifying and implementing strategies that increase a former prisoner's well-being within the community and reduces the likelihood of their return to prison through recidivating.”*
- Average yearly releases to Juneau – 502 individuals (CY: '12-'16).
- JREC serves as the facility/community interface.
- JREC is a collaboration of individuals, community stakeholders, public and not-for-profit agencies, faith-based and business partners who are united and committed to the goal of a safer community.
- Example: Subway of Juneau donating meal cards to our local field probation office.

# Juneau Reentry Coalition

---

JREC's area's of focus:

- Behavioral health treatment and support.
- Reentry housing:
  - Gastineau Human Services,
  - Haven House Juneau (women),
  - Tlingit & Haida's 16 bed reentry transitional housing program for men.
- Peer Support: those with demonstrated reentry success assisting recently released individuals achieve reentry success.

# Juneau Reentry Coalition

---

- JREC's structure:
  - Community members.
  - Steering Team:
    - Community member Co-chair
    - DOC Institution member Co-chair
    - Fifteen members from community areas of expertise.
  - Workgroups.
  - Community Coordinator.

# Juneau Reentry Coalition

---

- Juneau's reentry process:
  - Releasee - voluntary program
  - Institutions – Case Manager – Field Probation – Community connections.
- Juneau's case management numbers;
  - 63 individuals referred,
  - 15 graduates,
  - 20 opt-outs,
  - 11 Noncompliant,
  - 17 in community or intake process.

# PARTNERS REENTRY CENTER



**419 Barrow Street Anchorage, AK 99501**

*(ANC Correctional Complex: 10 minute walk)*

*(Adult Public Assistance: 8 minute walk)*

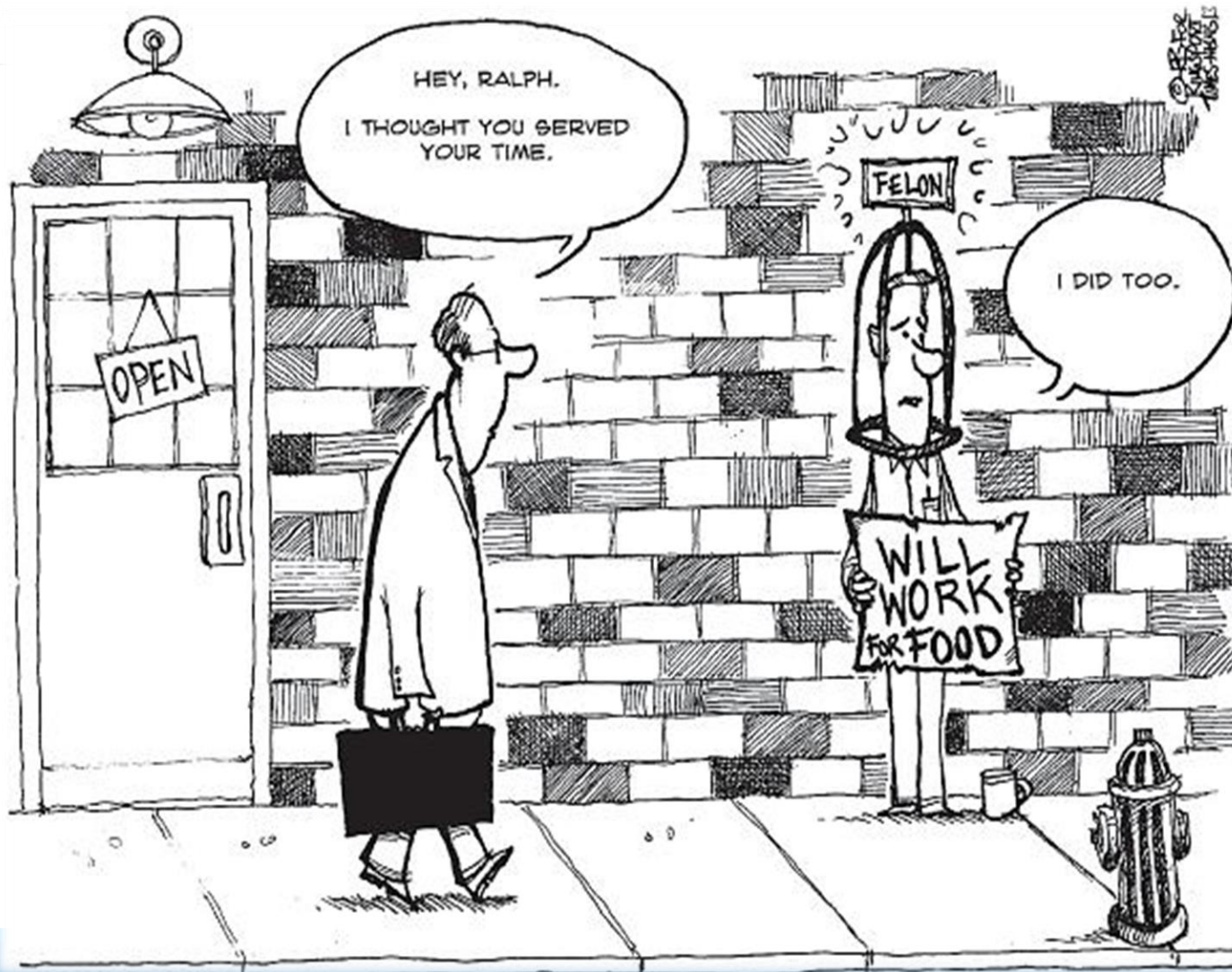
*(DOC Probation Office: 7 minute walk)*

- **Pre-Release & Walk-in**
- **Prioritize High-Risk and Immediate Needs**
- **Purpose-Driven Case Management**
- **Not a “Hang-out” Center**
- **Voluntary, Merit-Based Program**
- **A Referral & Collaboration based “Community Model”**
- **Using Evidence-Based Practices**



Formerly incarcerated people are almost **10 times** more likely to be homeless than the general public.

(“Nowhere to Go: Homelessness among formerly incarcerated people”. Lucius Couloute 8/2018)



# 3 Phases of Community-Based Reentry

---

## 1. Stabilize –

- Basic Needs Met
- Shelter, Food, Hygiene
- Move from survival mode

## 2. Incentivize

- Purpose-driven goals

## 3. Restore

- Accountability and healing

# PARTNERS REENTRY CENTER

## Housing

- ✓ Emergency
- ✓ Transitional
- ✓ Permanent
- ✓ Done in partnership with over 130 private landlords



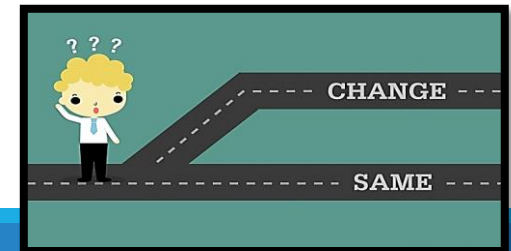
## Self-Sufficiency

- ✓ Employment
- ✓ Reinstating Social Security and other APA Benefits
- ✓ Overcoming barriers to employment, including personal shame



## Behavioral Modification & Community Support

- ✓ Accountability
- ✓ Sober Support
- ✓ Healthy Personal and Family relationships
- ✓ Goal Setting
- ✓ Finding Sustainable Purpose
- ✓ Referrals and collaboration with Community Partners



# PARTNERS REENTRY CENTER

## PROGRAM GROUP

### Engagement Highlights

**65%..... Applied for Medicaid/SNAP**

**31%..... referred to & utilized  
Treatment providers**

**61%..... Gained Full-Time Employment**

**An average of \$597.63 was spent per  
participant on Housing costs for the FY18  
Date Range.**

**91%..... Assessed as Med-Max  
Risk/Needs**

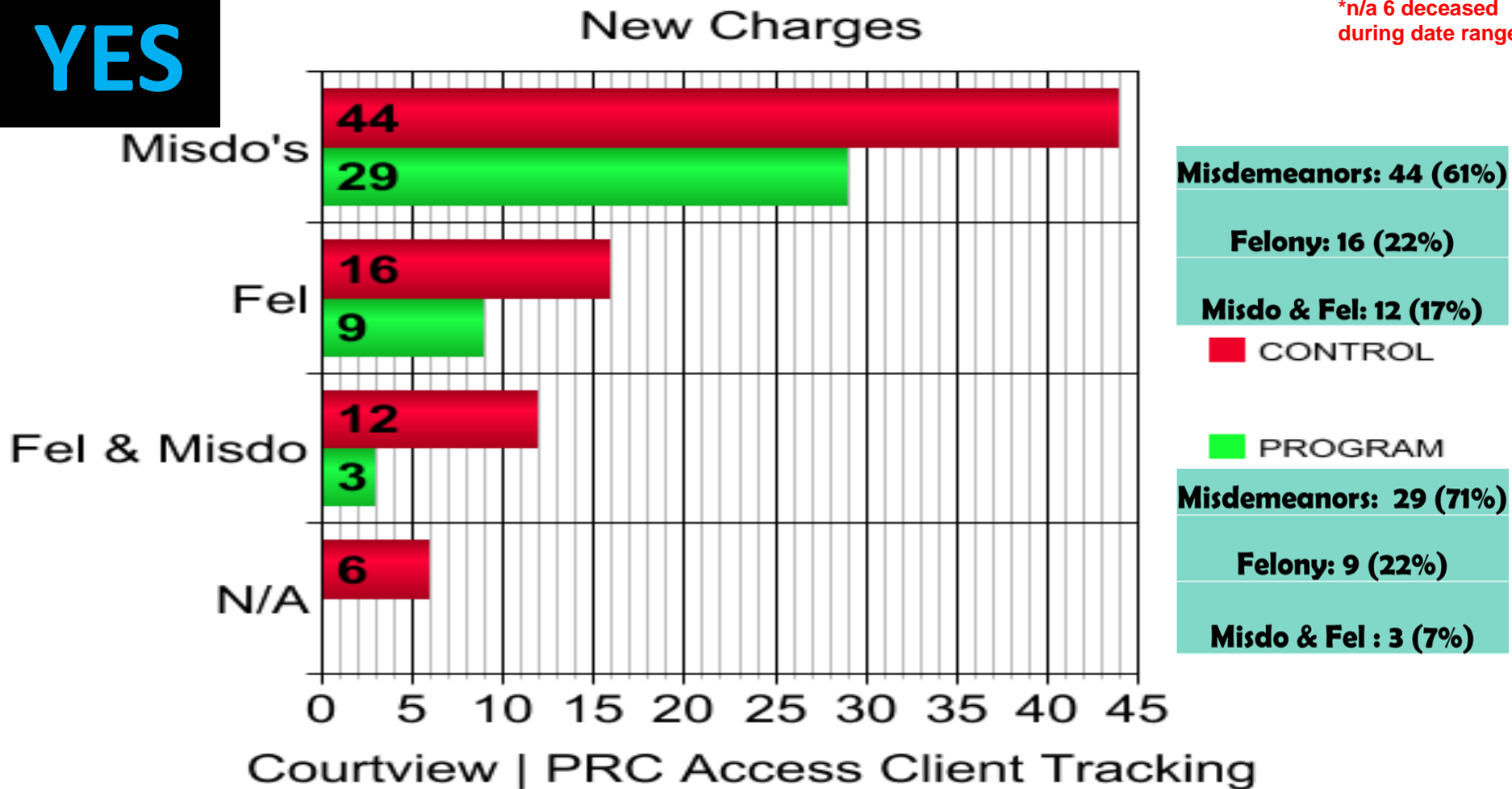


- DOC Referred (FWO)
- Engaged with PRC Program *minimum 7* or more times
- Housing/Employment Job Lab Services
- Utilized Referrals, Support Groups, Partnerships with other Community Organizations, etc.
- Received Case Management, Goal Planning, Program Intake & Attendance/Accountability Guidelines

**Do We Make  
a Difference?**

YES

\*n/a 6 deceased during date range



**PROGRAM GROUP** 41 out of 150 Recidivated, Resulting in a Re-Arrest, Re-Conviction and Return to Custody  
( **27% Recidivism Rate** )

**CONTROL GROUP** 72 out of 150 Recidivated, Resulting in a Re-Arrest, Re-Conviction and Return to Custody  
( **48% Recidivism Rate** )

# Safer, Healthier Alaskan Communities & Alaskans

---



**Increase public  
safety**

**Improve access to  
services & public  
health outcomes**

**Reduce recidivism**



*“ The country was built on the belief that each human being has limitless potential and worth. Everybody matters. We believe that even those who have struggled with a dark past can find brighter days ahead. One way we act on that belief is by helping former prisoners who’ve paid for their crimes – we help them build new lives as productive members of our society....the work of redemption reflects our values.”*

-President George W. Bush  
April 9, 2008

# Thank You

---

Susanne DiPietro, Alaska Judicial Council

Don Habeger, Juneau Reentry Coalition Coordinator

Cathleen McLaughlin, Partners Reentry Center

Steve Williams, Alaska Mental Health Trust