

Calendar Year Snap Shot of API Utilization

Calendar Year	Official Bed Capacity	Maximum Patient Bed Days	Total No. of Admissions	No. of Unduplicated Admits With Just a Single Stay during the Year	No. of Unduplicated Admits With Multiple Stays during the Year	Total No. of Actual Bed Days Used as a Percentage of Maximum Days Possible (# / %)	Average Daily Census	Average No. of Admissions Per Month	No. of Days in the Year Where API Handled 8 or More Admissions in a Single Day	No. of Days in the Year Where API Handled 5 or More Admissions in a Single Day	No. of Days in the Year with Just One Admission	No. of Discharges
1990	160	58,400	831	529	126	33,147 / 57%	90	69	3	32	90	831
2000	74	27,010	1,448	872	213	23,954 / 88%	65	121	24	140	40	1,448
2010	80	29,200	1,286	782	199	24,698 / 85%	68	107	10	104	48	1,281
2011	80	29,200	1,489	863	232	25,225 / 85%	69	124	20	143	25	1,506
2015	80	26,595*	1,547	936	228	23,276 / 88%	64	129	23	166	32	1,555
2016	80	28,297*	1,519	880	239	25,873 / 91%	71	126	18	162	31	1,499
2017	80	28,667*	1,486	839	249	26,528 / 93%	73	124	9	151	21	1,488
2018	37-70**	20,183*	723	448	111	18,988 / 94%	53	62	0	19	83	757

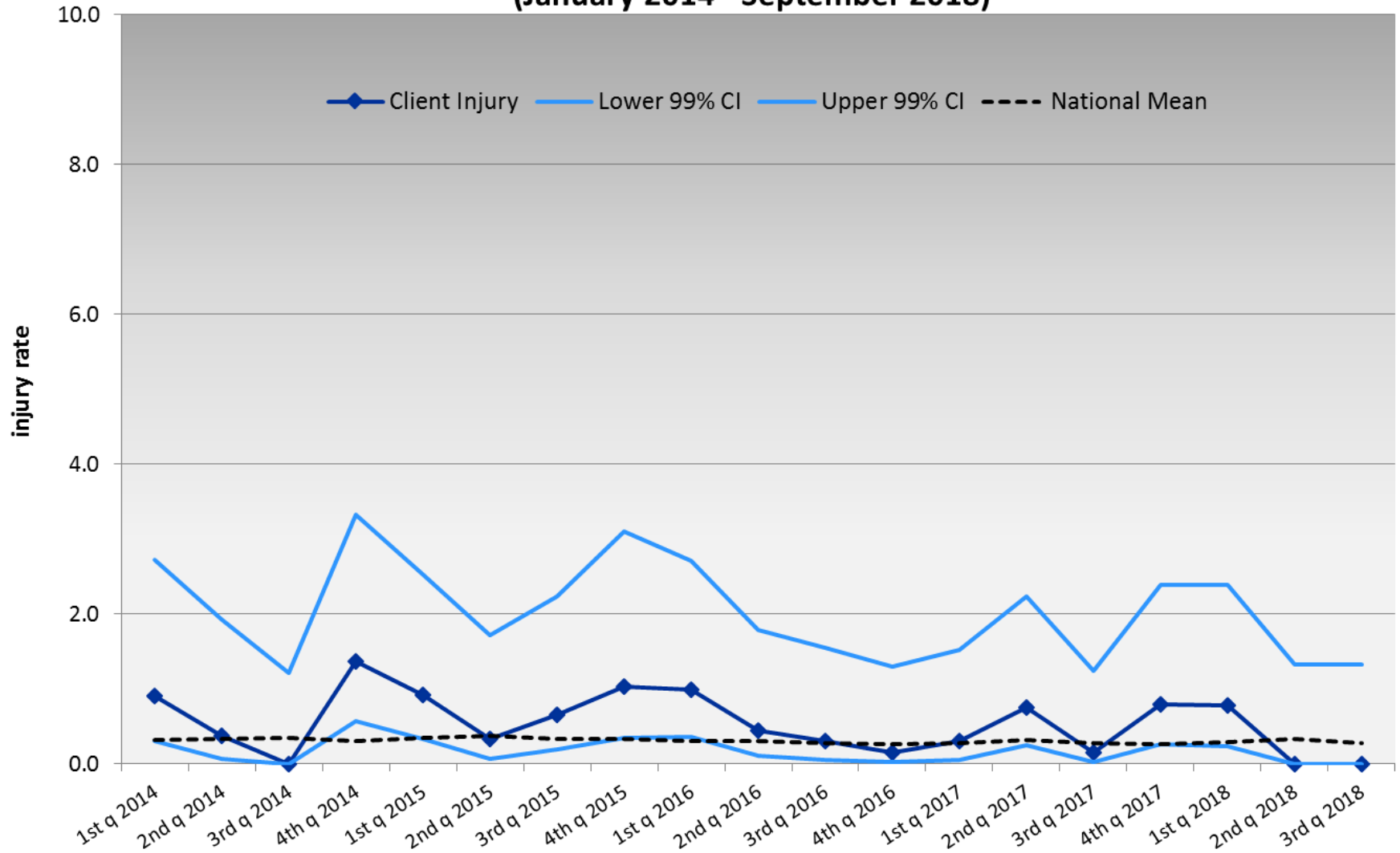
*Maximum Patient Bed Days reflects unit closures during the year.

**Official bed capacities fluctuated throughout 2018 due to unit renovations and staffing shortages.

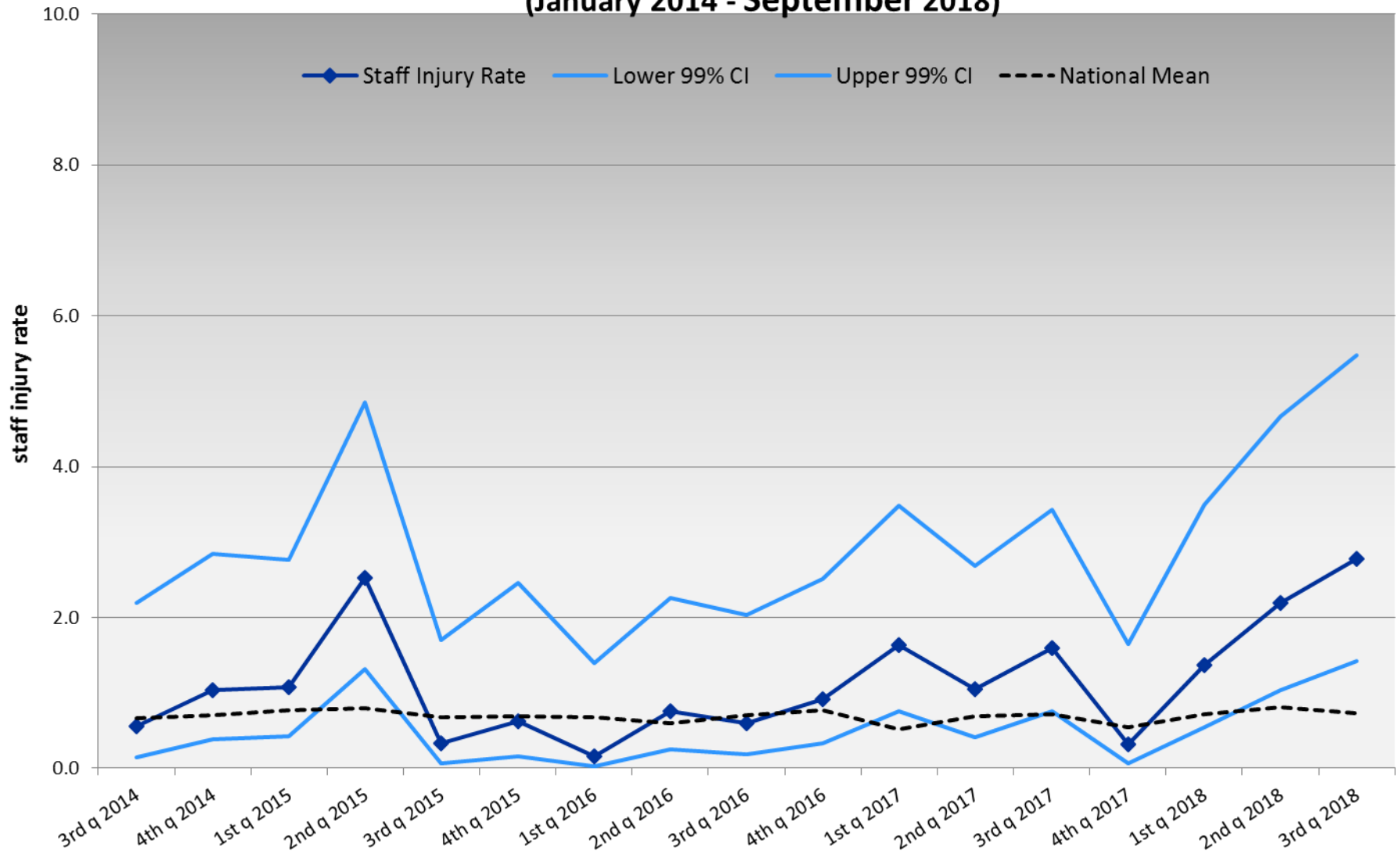
Patient Injury Rate -

Number of Patient Injury Events of Severity Requiring Medical Intervention or Hospitalization for Every 1000 Inpatient Days

(January 2014 - September 2018)

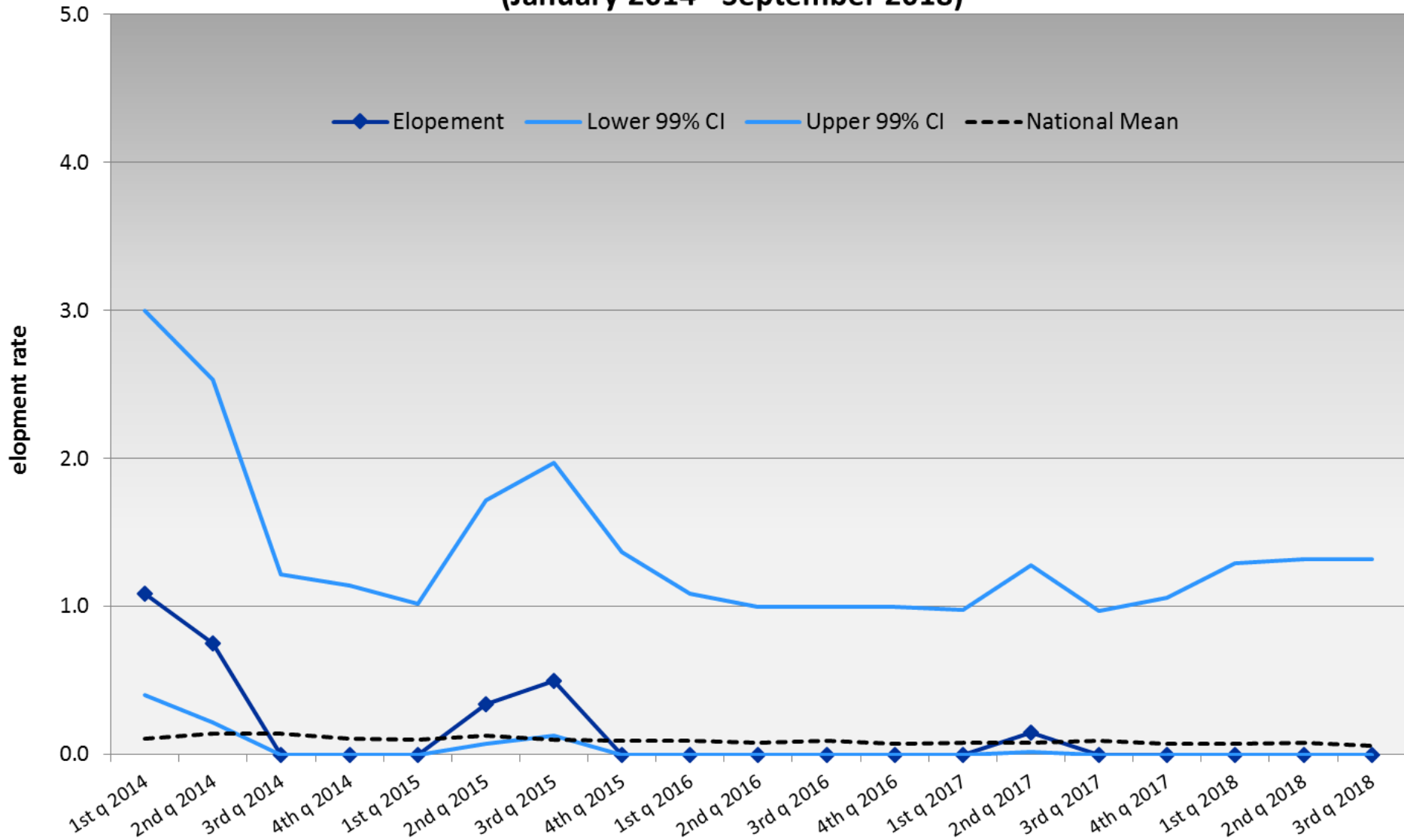


Staff Injury Rate - Number of Staff Injury Events of Severity Requiring Medical Intervention or Hospitalization that Occurred for Every 1000 Inpatient Days. (January 2014 - September 2018)



Elopement Rate* -

Number of elopements that occurred for every 1000 inpatient days
(January 2014 - September 2018)

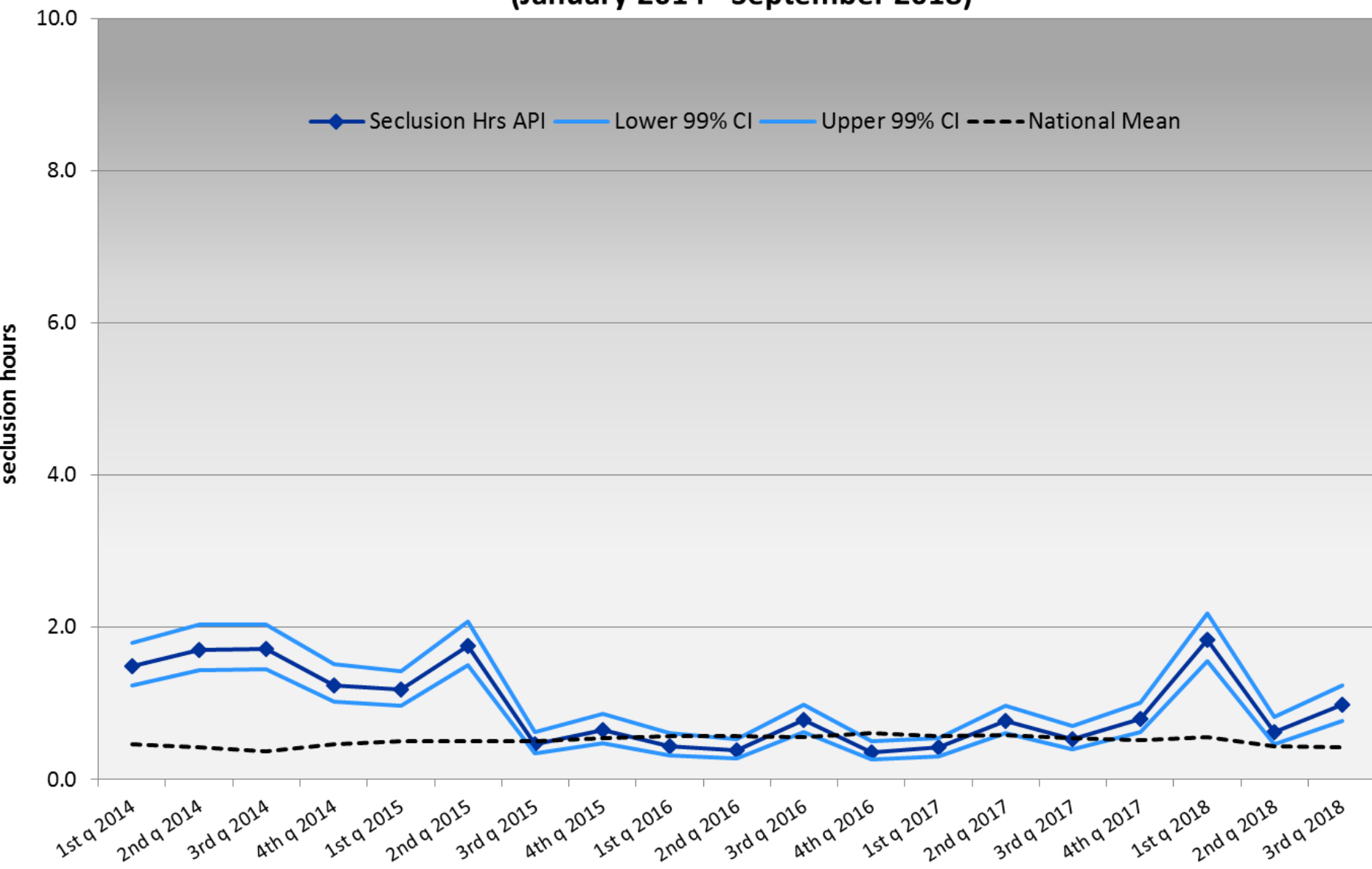


*Elopement is defined as any absence from a location as defined by the patient's privilege status regardless of leave or lethal status. An elopement in this sense does not indicate departure from the physical building.

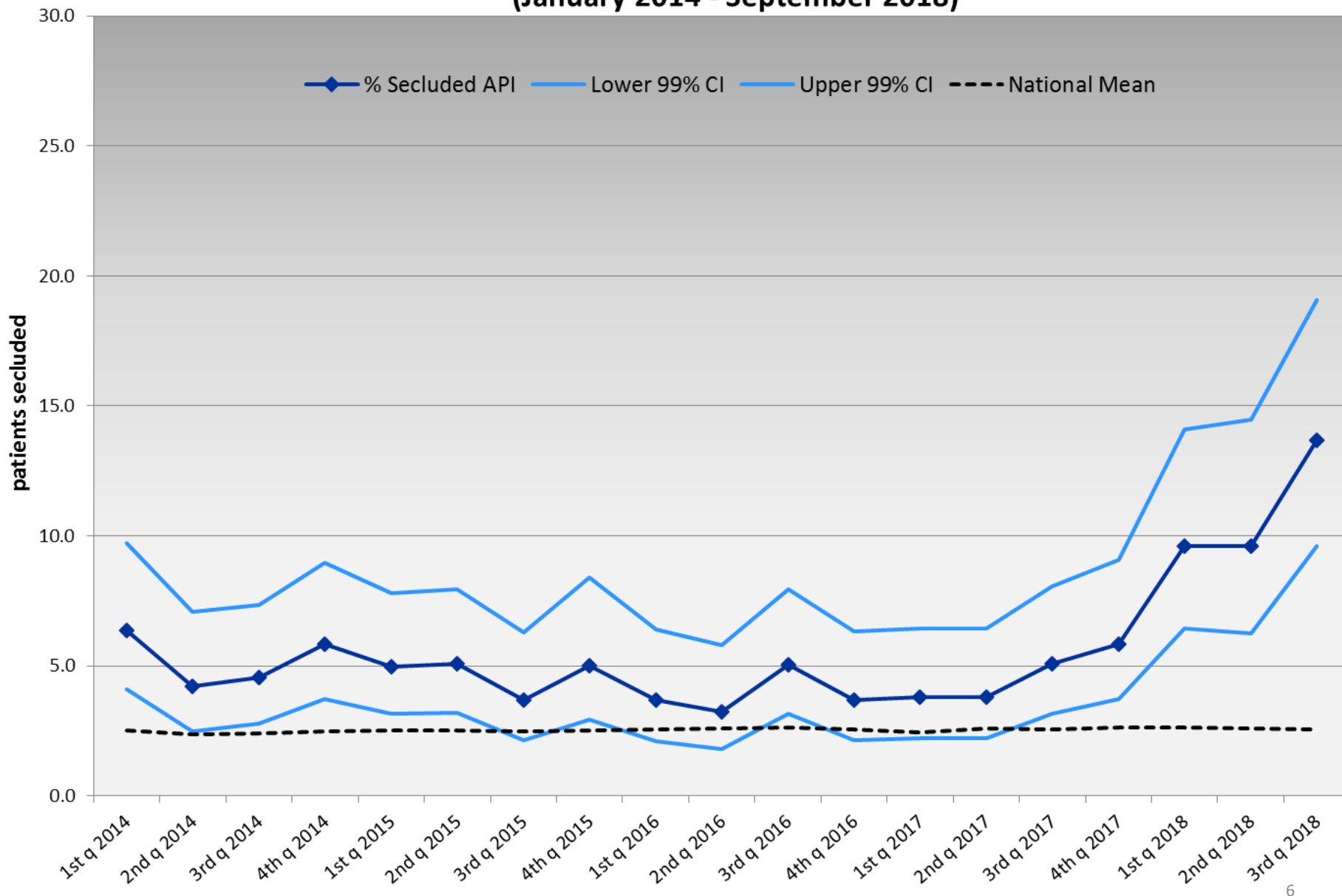
Seclusion Hours -

Number of Hours Spent in Locked Seclusion per 1000 Inpatient Hours.

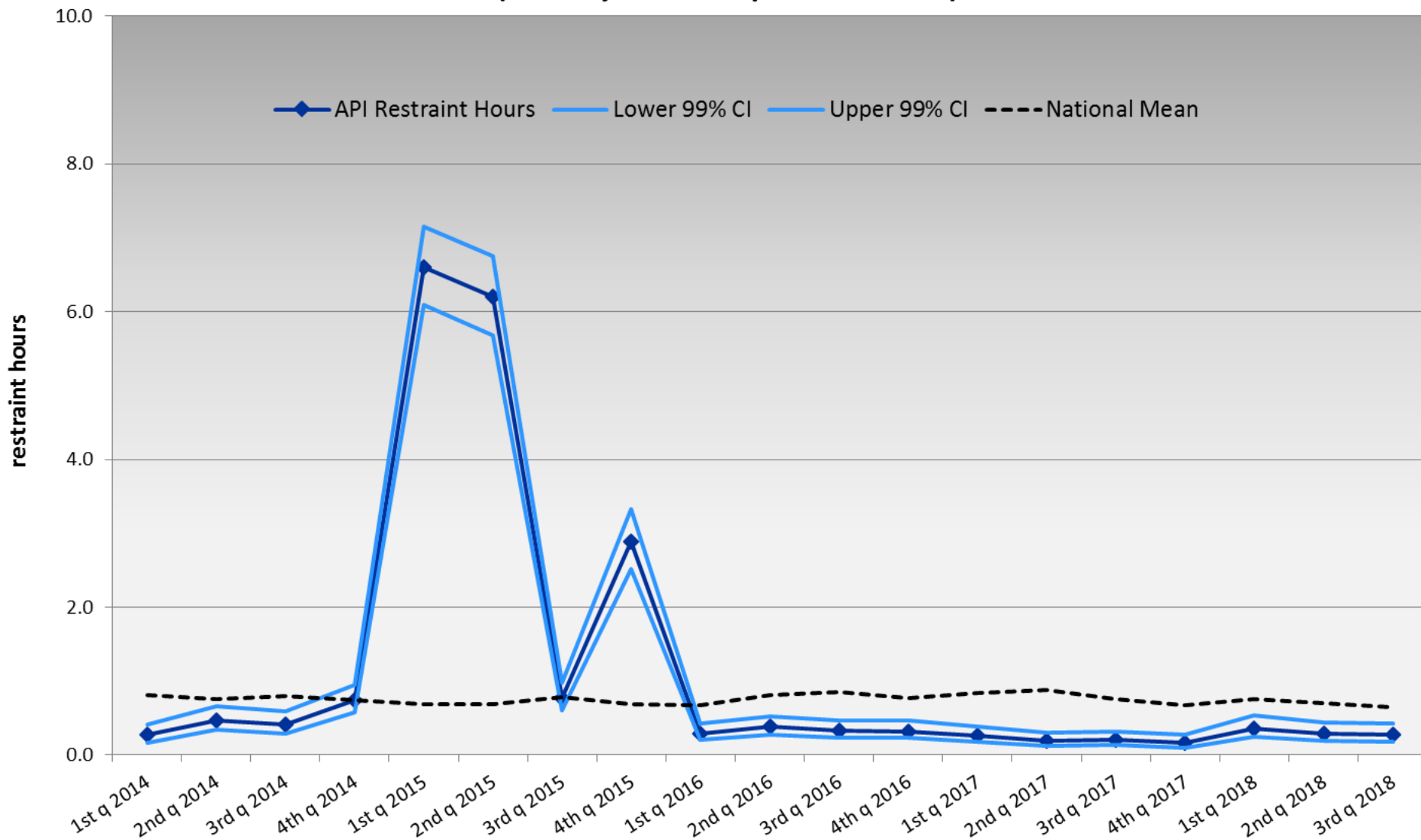
(January 2014 - September 2018)



Patients Secluded - Percentage of Unique Patients Secluded at Least Once in the Quarter. (January 2014 - September 2018)

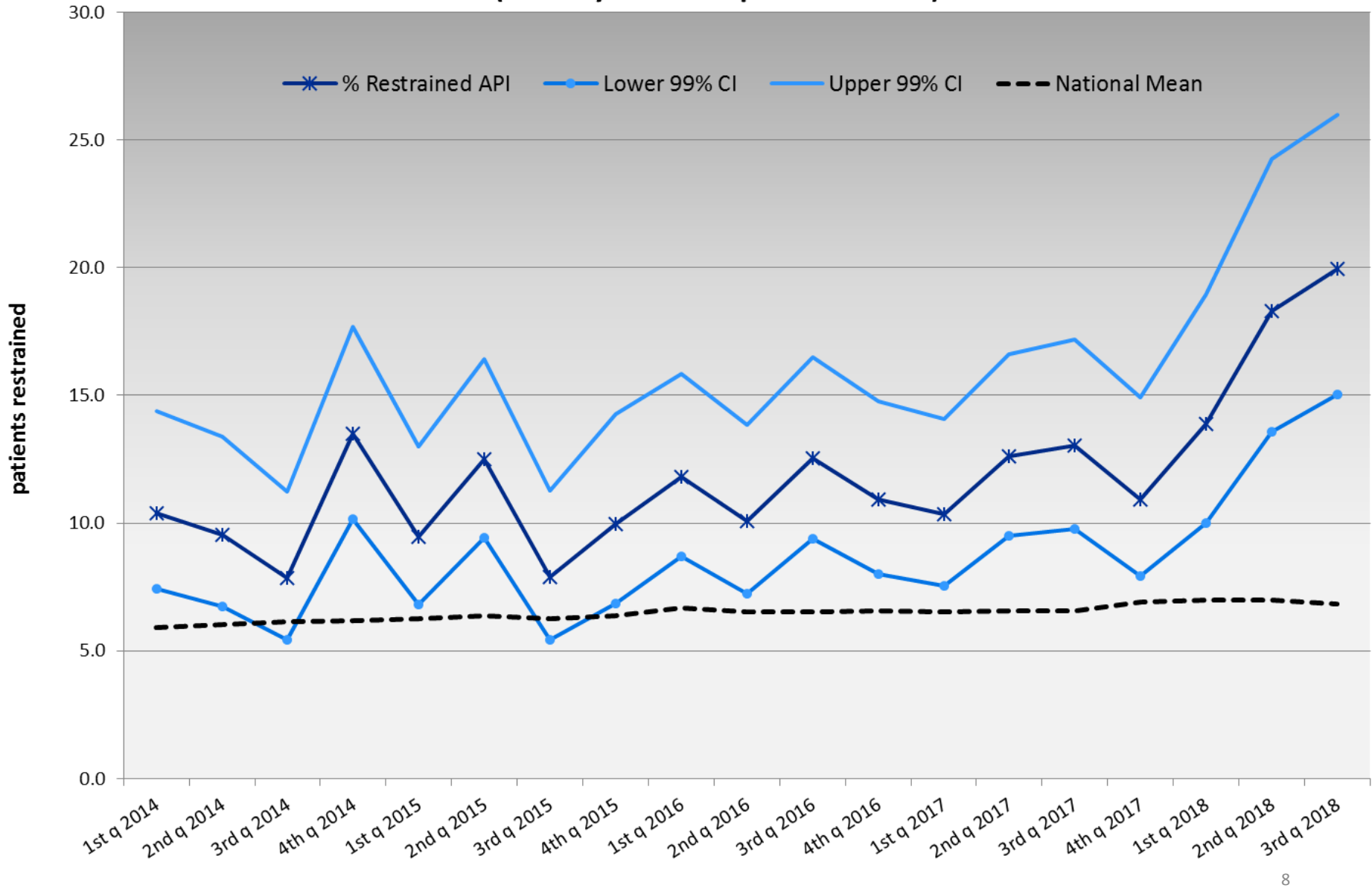


Restraint Hours* - Number of Hours Patients Spent in Restraint for Every 1000 Inpatient Hours (January 2014 - September 2018)

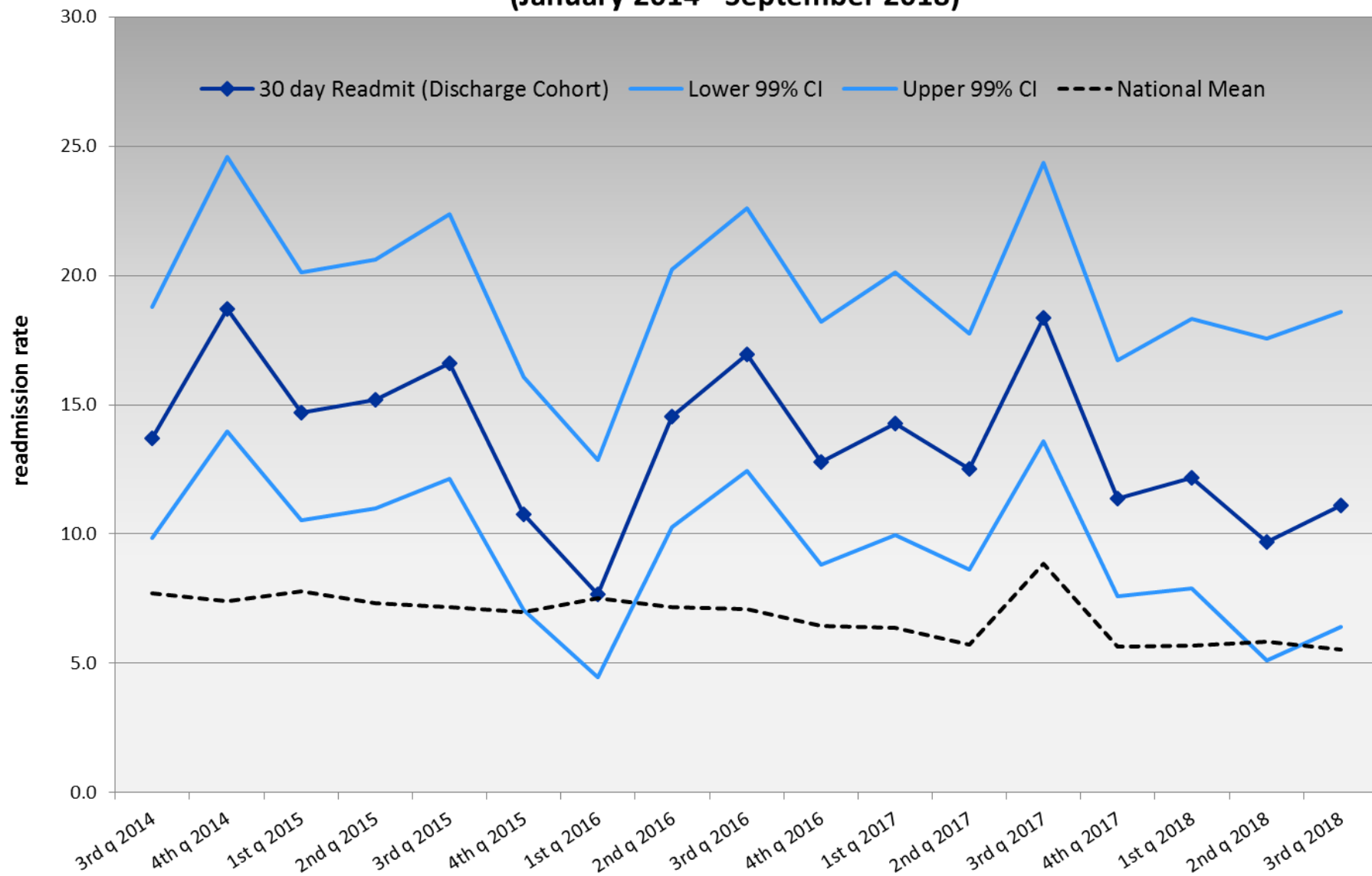


*Includes manual holds, walking restraints and bed restraints.

Patients Restrained - Percentage of Unique Patients Restrained at Least Once in the Quarter (January 2014 - September 2018)



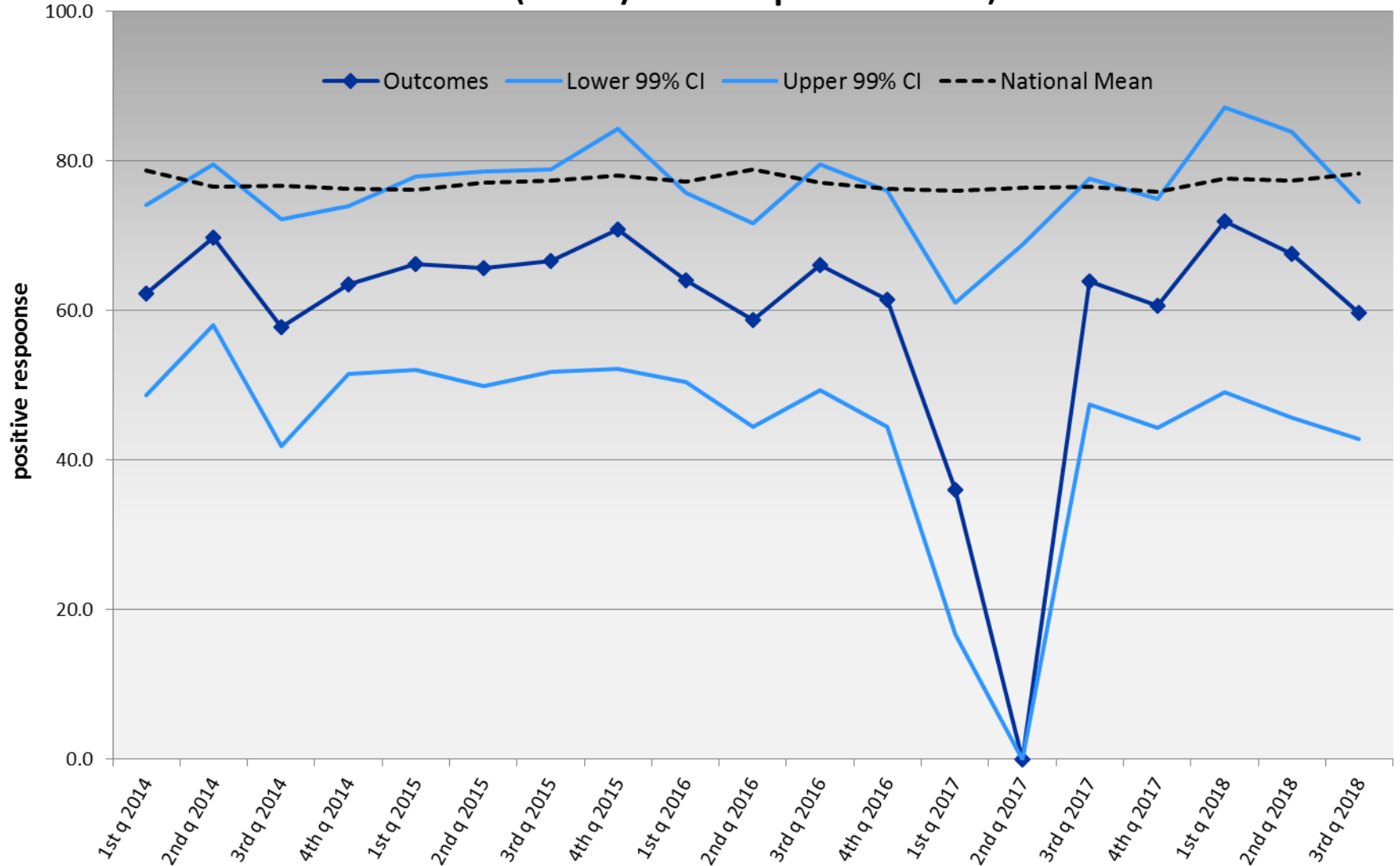
30 Day Readmission Rate - Percentage of Patient Discharges from API that Returned within 30 days (January 2014 - September 2018)



MHSIP Patient Survey - Outcome

Percentage of clients surveyed indicating agreement, or strong agreement with statements indicating improved mental health and coping skills as a result of services received

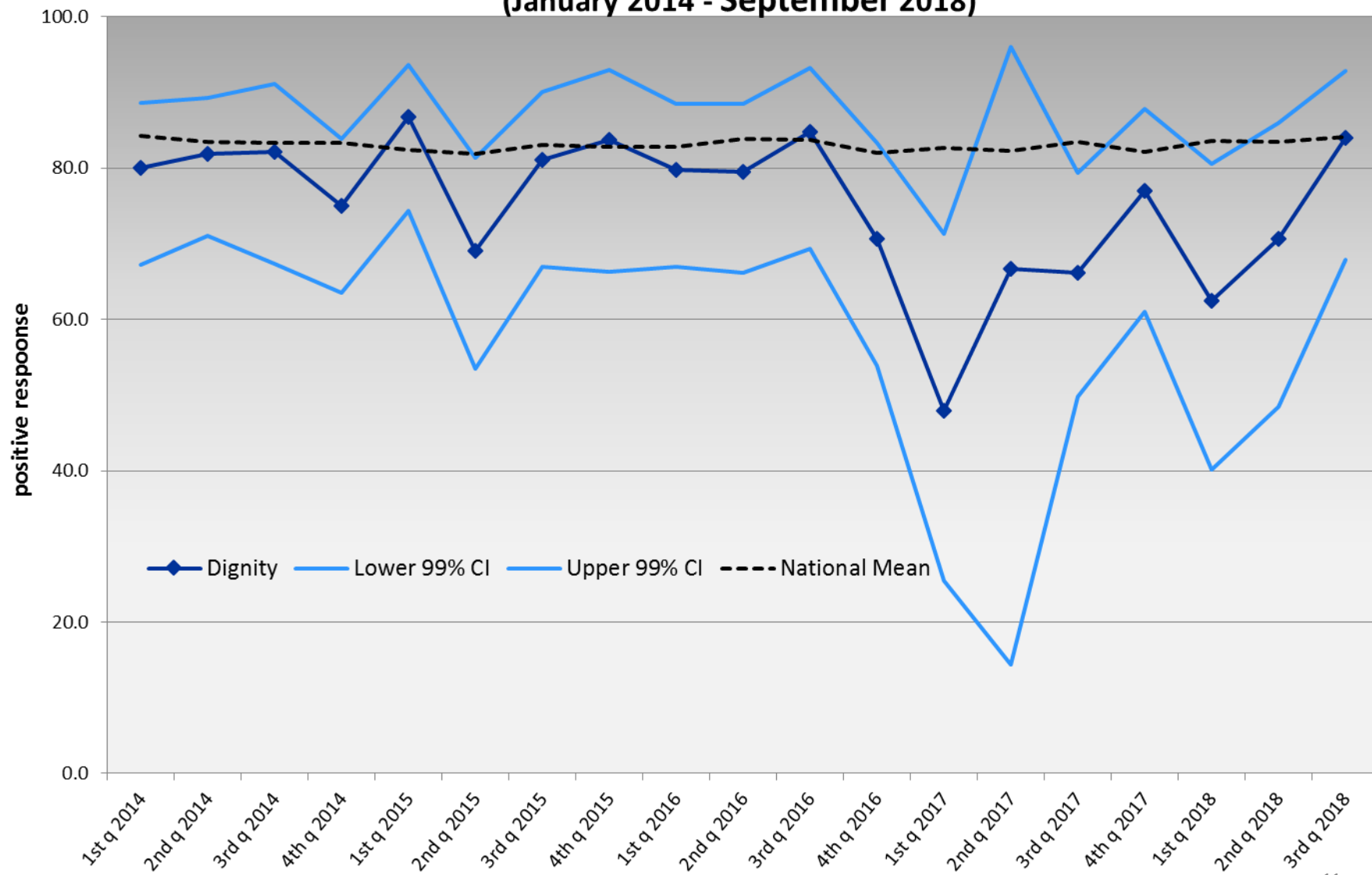
(January 2014 - September 2018)



Patient Survey - Dignity

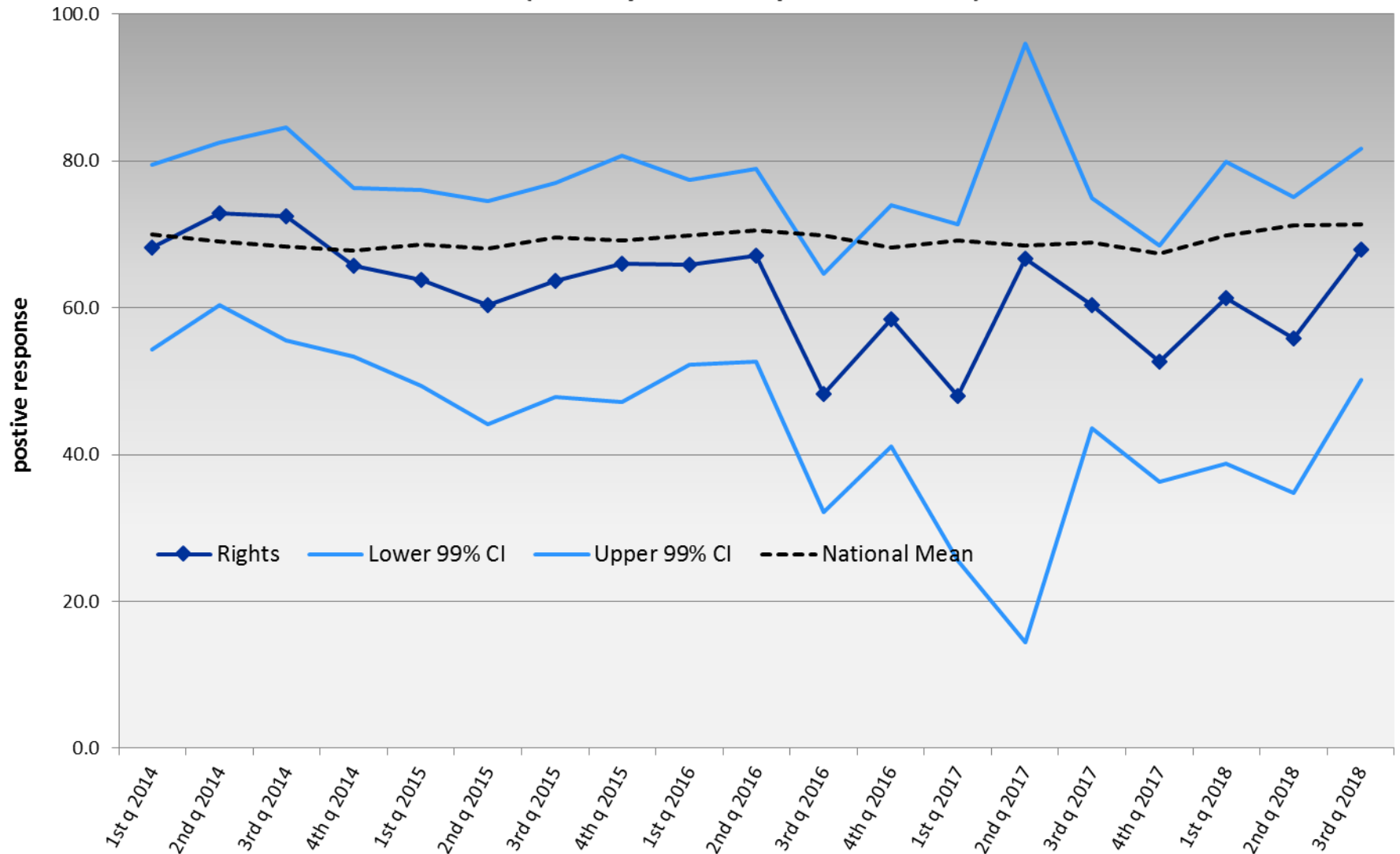
Percentage of clients surveyed indicating agreement, or strong agreement with statements indicating they were treated with dignity and respect

(January 2014 - September 2018)



Patient Survey - Rights

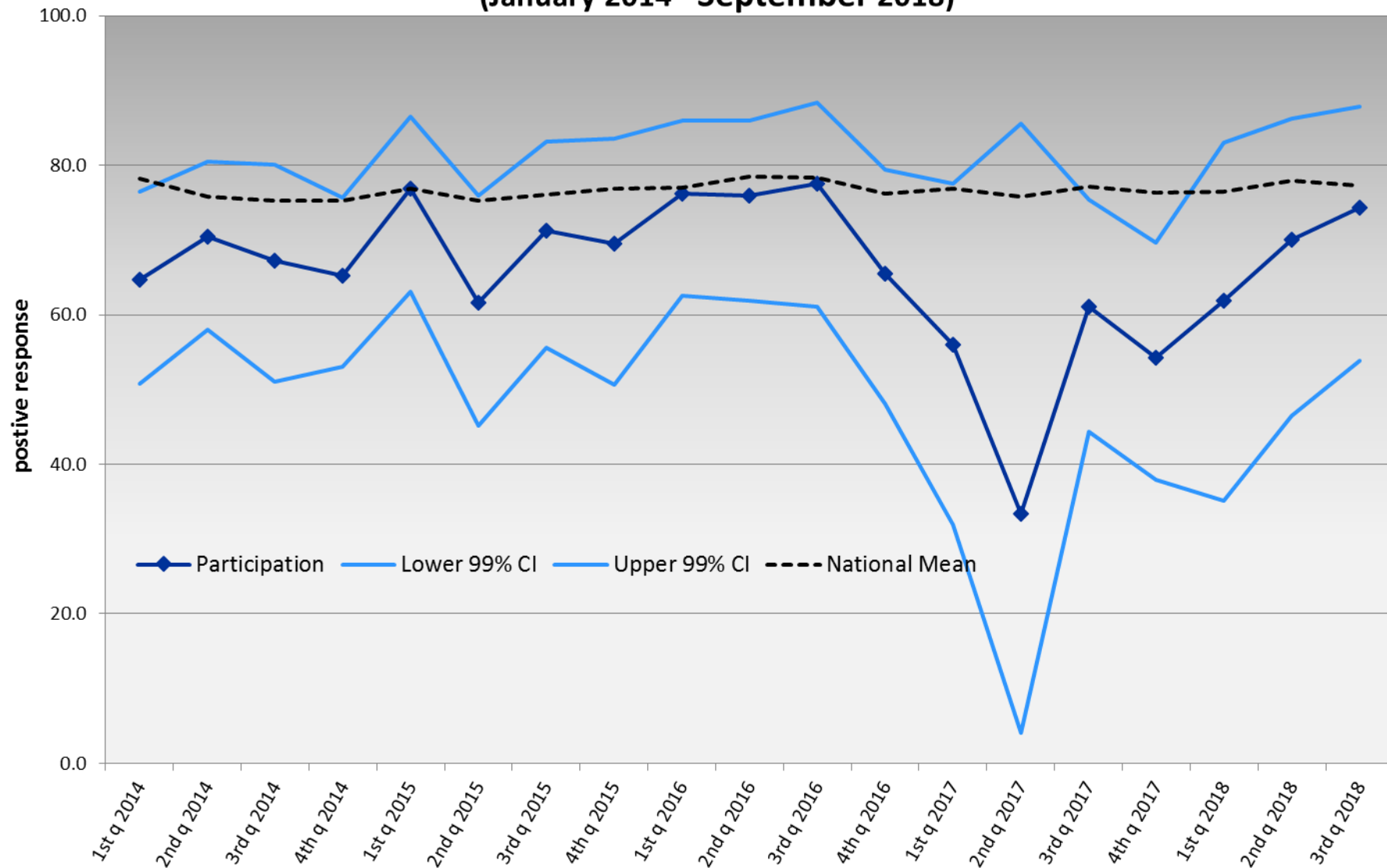
Percentage of clients surveyed indicating agreement, or strong agreement with statements indicating freedom to refuse medications, safe to file complaints, and that complaints were addressed
(January 2014 - September 2018)



Patient Survey - Participation

Percentage of clients surveyed indicating agreement, or strong agreement with statements indicating active involvement in treatment

(January 2014 - September 2018)



Patient Survey - Environment

Percentage of clients surveyed indicating agreement, or strong agreement with statements indicating safety, privacy, cleanliness and comfort

(December 2014 - September 2018)

