



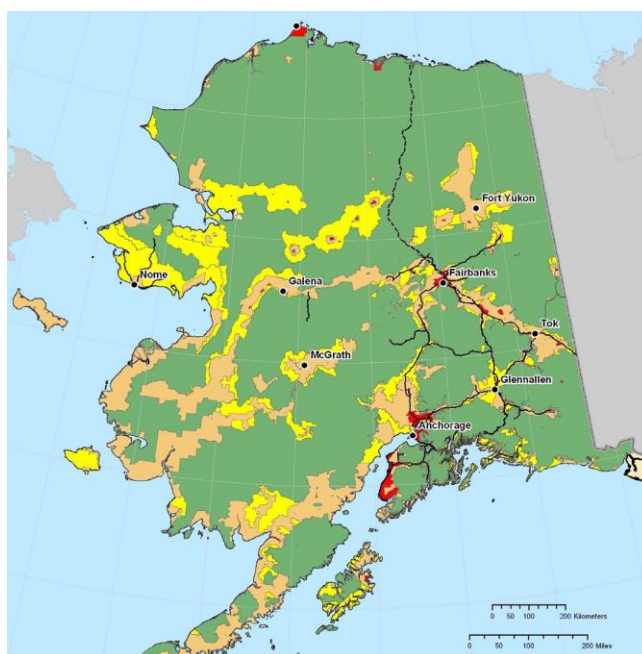
The Alaska Interagency Wildland Fire Management Plan

The **AIWFMP** defines management options which pre-select initial strategies for a wildland fire; responses range from immediate suppression actions to periodic surveillance.

The management options provide a guide for the agencies to prioritize the use of suppression resources upon initial attack. Management Options are defined in the Alaska Interagency Wildland Fire Management Plan and designations are reviewed yearly.

Critical (red): Critical addresses areas and sites where people live and fulfills legal mandates; the objective in the Critical option areas is to protect the area or site from fire.

Full (orange): In Full, the objectives include control of all wildland fires at the smallest reasonable size and to protect high value natural resource areas. Native allotments are designated Full or Critical; developed recreation facilities or administrative sites may also be designated Full. Each agency has a structure or site protection policy and it varies between agency.



Modified (yellow): The Modified option designations afford jurisdictional agencies the opportunity to accomplish fire-related land use and resource management objectives when fire and environmental conditions are favorable.

Limited (green): Limited is designed for broad, landscape-scale areas where the low density and wide distribution of values to be protected best allows for fire to function in its ecological role. Site-specific action may be taken as warranted.

The Management Option categorizations:

- *Prioritize areas for initial response and ensure human life, designated property and identified resources receive an appropriate level of protection with available firefighting resources.*
- *Optimize the ability to achieve land use and resource management objectives and integrate fire management, mission objectives, land use, and natural resource goals.*
- *Reinforce the premise that the cost of the suppression effort be commensurate with values identified for protection*

The full plan can be found at this link: https://fire.ak.blm.gov/content/planning/aiwfmp_2010.pdf

**Land management agencies operate from their respective unit fire management plans. The AIWFMP complements the plans and facilitates cooperation/coordination across boundaries.*

Fire Management

Federal, State, and Alaska Native jurisdictional land managers have the overall planning and management direction responsibility for their lands. Fire management decisions incorporate fire science research, vegetative fuels data, proactive public education, as well as training and qualification of firefighters. Three agencies provide wildland fire suppression service to the jurisdictional agencies.

The map at right shows the fire suppression agency boundaries as outlined in the Alaska Interagency Wildland Fire Management Plan.

- **Bureau of Land Management - Alaska Fire Service Protection = 191 million acres**
- **State of Alaska Division of Forestry Protection = 154 million acres**
- **U.S. Forest Service Protection = 26 million acres**

