

# CSHB 231 (FSH) Alaska Commercial Fisheries Entry Commission



Presented by

Sylvan Robb, Deputy Commissioner, Administration

Fate Putman, Commissioner, Commercial Fisheries Entry Commission

# Commercial Fisheries Entry Commission

- The Commercial Fisheries Entry Commission (CFEC) is a regulatory and quasi-judicial agency that is tasked to:
  - Limit entry of participants and vessels into the commercial fisheries
  - Issue and transfer annual commercial fishing permits and vessel licenses
  - Adjudicate appeals of actions including denials of applications and transfers
  - Study, analyze, and report on the economics and stability of commercial fisheries
  - Ensure reliable and timely access to fishery data; and
  - Promote the conservation and sustained yield management of Alaska's commercial fishery resource
  - Assess demerit points against or suspend fishing privileges of permit holders for convictions for violations of commercial fishing laws

# What HB 231 Does

- Reduces number of commissioners of the CFEC from three to two
- Changes compensation for commissioners:
  - Commissioner serving as chair retains a Range 27(\$8789/month)
  - Pay for second commissioner is reduced to a Range 24 (\$7225/month)
- Removes the CFEC staff from exempt service and assigns them to classified service
  - Division of Personnel/Labor Relations will perform a classification study and place positions on appropriate classified pay scale
  - Current CFEC staff will not receive a reduction in pay—their pay will be “frozen” until the pay scale catches up to the newly classified position
  - New CFEC staff will start at the new Range/Step A
  - Staff will be represented by appropriate unions—Supervisors Union (SU) and General Government Unit (GGU) or Confidential Employees Association (CEA)

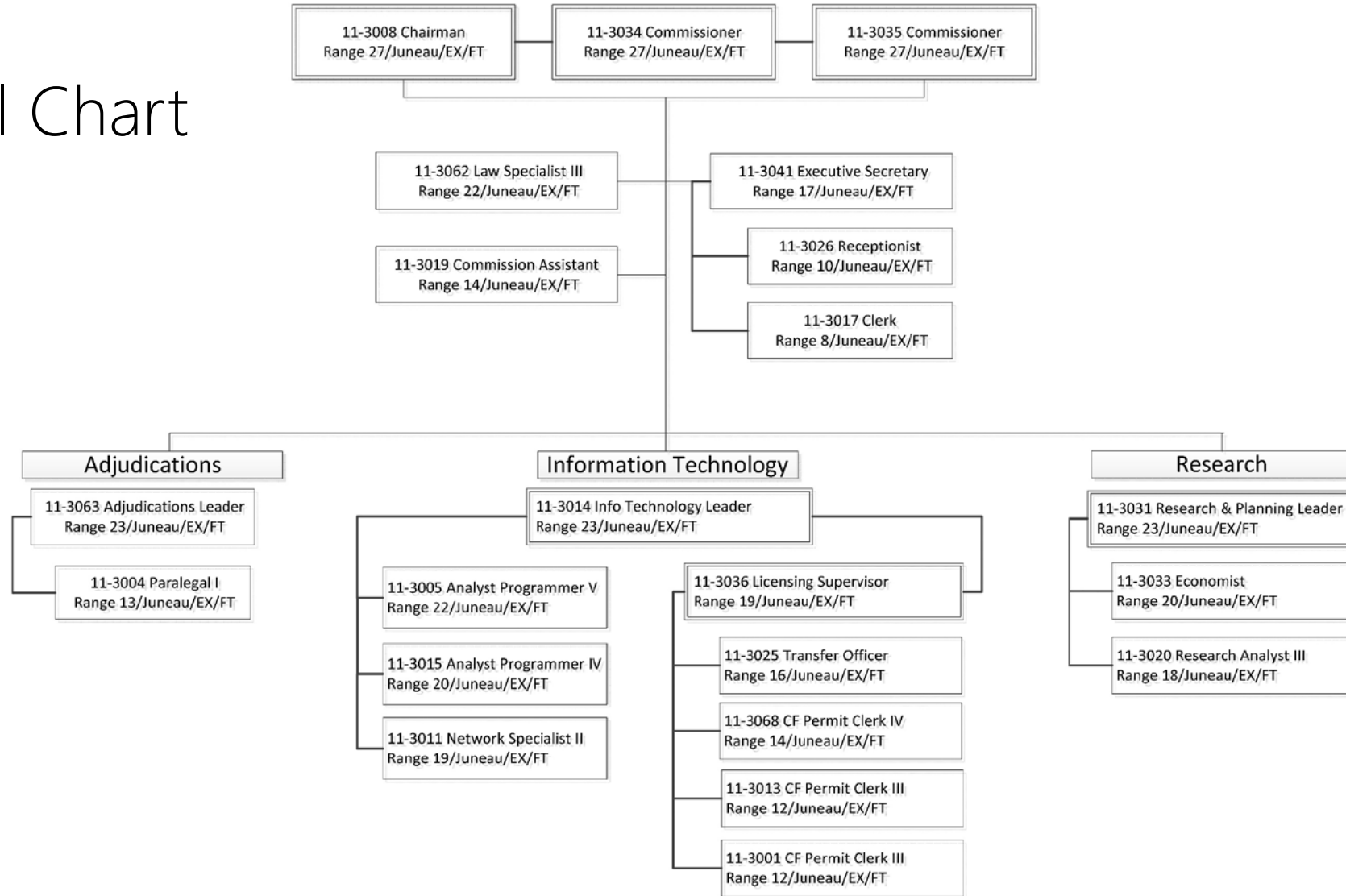
# Why is HB 231 Needed

- Caseload is lighter
  - Decisions from the CFEC have declined over time
- Save money
  - Align commissioners to similar ranges of similar positions (OAH, Hearing Officers)
  - Align staff with similar positions in classified service

# Commercial Fisheries Entry Commission

(Administratively attached to the Department of Fish and Game)

## Current CFEC Organizational Chart



# Questions?

For more information, please contact:

Minta Montalbo, Legislative Liaison

[minta.montalbo@alaska.gov](mailto:minta.montalbo@alaska.gov)

465-2200