



ALL ALASKA
PEDIATRIC
PARTNERSHIP



Help Me Grow
Alaska

Tamar Ben-Yosef

Executive director,
All Alaska Pediatric
Partnership

What is Help Me Grow?



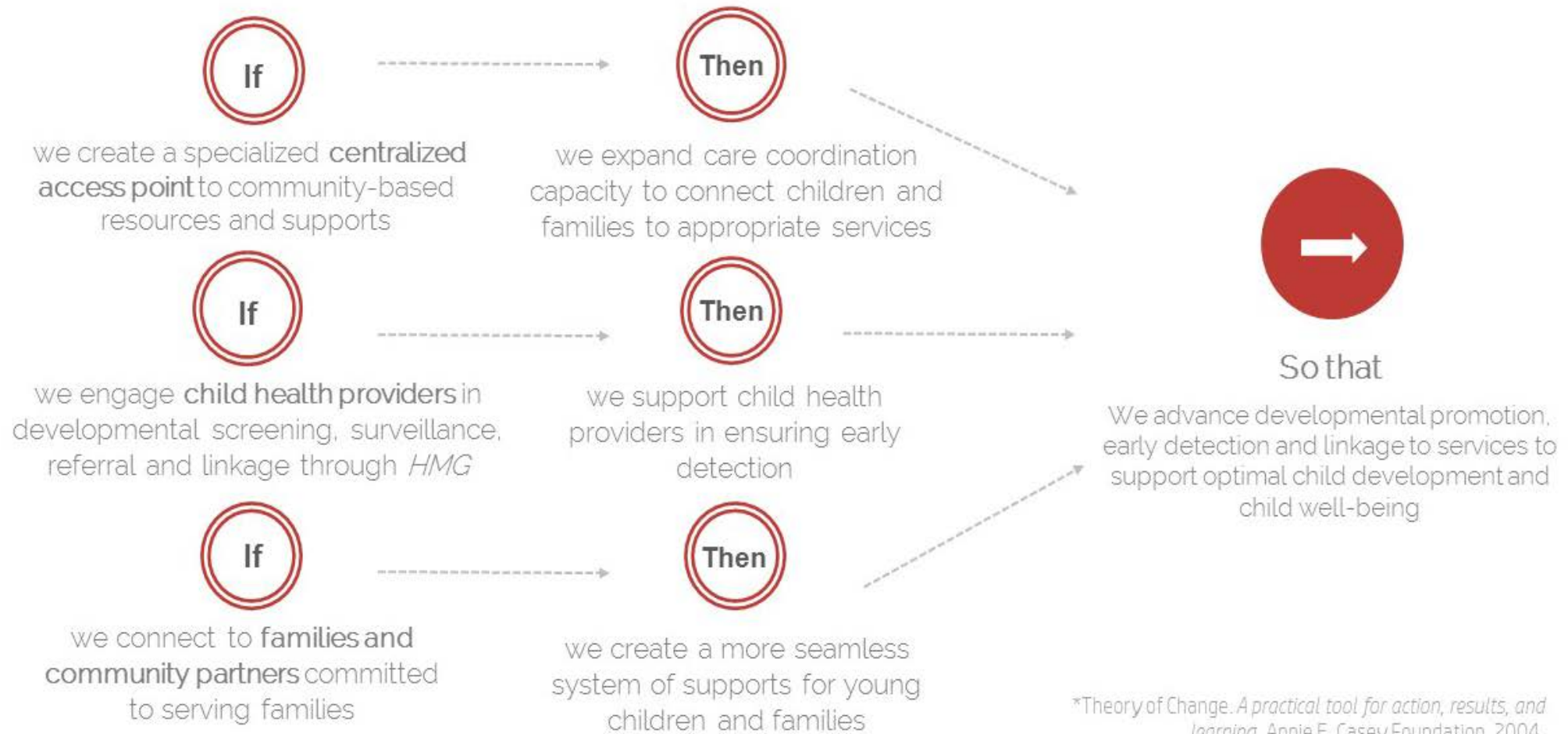
Help Me Grow is a system that
connects children *and families* with
the services they need.



ALL ALASKA
PEDIATRIC
PARTNERSHIP

Help Me Grow Theory of Change:

LOCAL IMPLEMENTATION



*Theory of Change. A practical tool for action, results, and learning. Annie E. Casey Foundation. 2004.

There are NO wrong doors

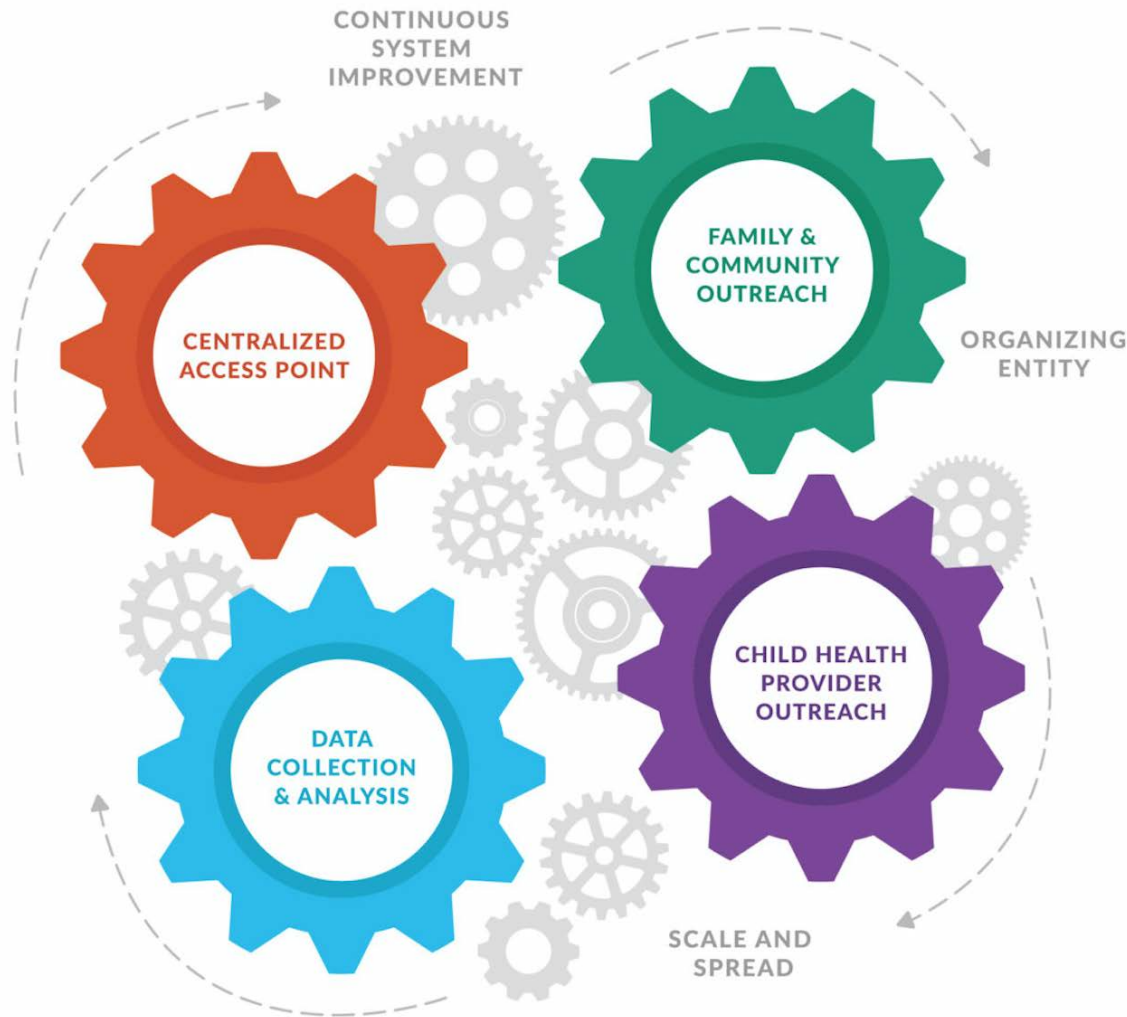
- **Question:** “Where can I turn if I have questions about my child or a child in my care?”
- **Answer:** *Help Me Grow* helps with questions about behavior, development & learning, making a connection to community-based services.



Community-based services and supports for all children and their families such as:

- Early Care and Education
- Child Health
- Early Intervention
- Family Support

The Four Core Components of Help Me Grow



- **HMG Builds collaboration across sectors to improve access**
- **Identifies gaps and barriers to accessing services**



ALL ALASKA
PEDIATRIC
PARTNERSHIP

Developmental Screening Priority



- Increase access to **standardized** developmental screening statewide
- **ASQ-3 and ASQ:SE-2** both online and paper versions
 - Will interpret results with family and, with consent, share them with the child's primary health care provider to close the information loop
- Built-in resource and referral service via HMG-AK care coordinators during and after screening

“Help Me Grow will centralize screening data and work alongside current partners to promote on-time universal screening”

- Governor's Council on Disabilities and Special Education task force on developmental screening



ALL ALASKA
PEDIATRIC
PARTNERSHIP

CENTRALIZED PHONE ACCESS POINT

to connect children and their families to services and care coordination

The call center is the “go-to” place for families, child health care providers, and other professionals seeking information, support, and referrals for children. Call center staff are trained in telephone casework, cultural sensitivity, and child development. Call centers use a computerized resource directory and an automated client-tracking system.



ALL ALASKA
PEDIATRIC
PARTNERSHIP

DATA COLLECTION & ANALYSIS

to understand all aspects of the *Help Me Grow* system, including gaps and barriers

Call centers are in a unique position to collect data that reflect system-level issues—information not only on who calls and why, but also on what happens to families seeking help. This includes identification of gaps in and barriers to services. Data collection also includes gathering information on how well the other components of the *HMG* system are operating.



ALL ALASKA
PEDIATRIC
PARTNERSHIP

FAMILY & COMMUNITY OUTREACH

to promote *Help Me Grow* and bolster healthy child development through families

A community presence encourages support for and participation in the *Help Me Grow* system. It also facilitates the building of a robust resource directory and helps keep the directory up-to-date. Outreach staff engage families by participating in community meetings, forums, and fairs, and facilitating sessions that help families learn about child development and the role of *Help Me Grow*.



ALL ALASKA
PEDIATRIC
PARTNERSHIP

CHILD HEALTH PROVIDER OUTREACH

to support developmental promotion,
early detection, and intervention

Help Me Grow staff conduct targeted outreach to child health care providers through office-based education and training. Trainings help providers:

1. conduct developmental surveillance and screening of children from birth to age five;
2. use the call center; and
3. systematize surveillance and screening and the use of *Help Me Grow* in their practices.



ALL ALASKA
PEDIATRIC
PARTNERSHIP



Partnerships are Key

Linkage goes beyond just getting children to services. Our goal is a more connected and collaborative system to support families.

Technology

Outreach

Policy



ALL ALASKA
PEDIATRIC
PARTNERSHIP

Questions?

Tamar Ben-Yosef
Executive Director,
**All Alaska Pediatric
Partnership**

(907) 903-6770
tamar@a2p2.org
www.a2p2.org

