

# **Introduction to the Alaska Early Childhood Coordinating Council**

**Joint House Education and Health and Social Services Committees**

**March 14, 2018**

**Anji Gallanos**

**Early Learning Administrator**

**Department of Education and Early Development**



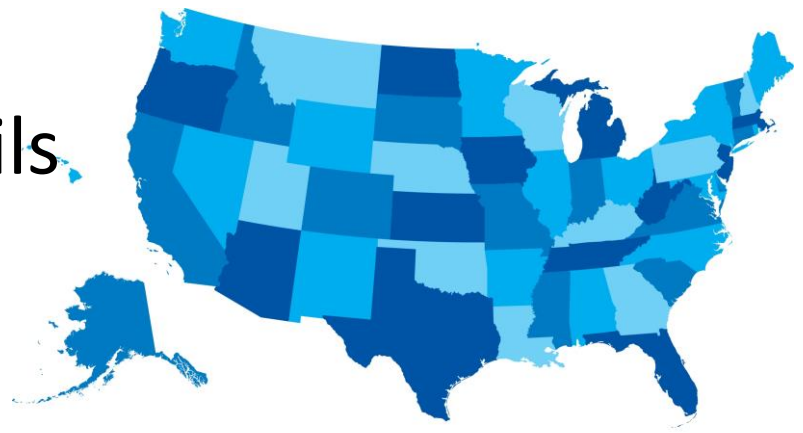
# **Alaska Early Childhood Coordinating Council AECCC**

# AECCC

## Discussion

- Overview of Advisory Councils across the states
- Need for Advisory Council in Alaska
- Structure of the AECCC
- Subcommittee Discussion

# Overview of Advisory Councils across the States



Nearly all Governors have designated a state advisory council to advise policymakers.

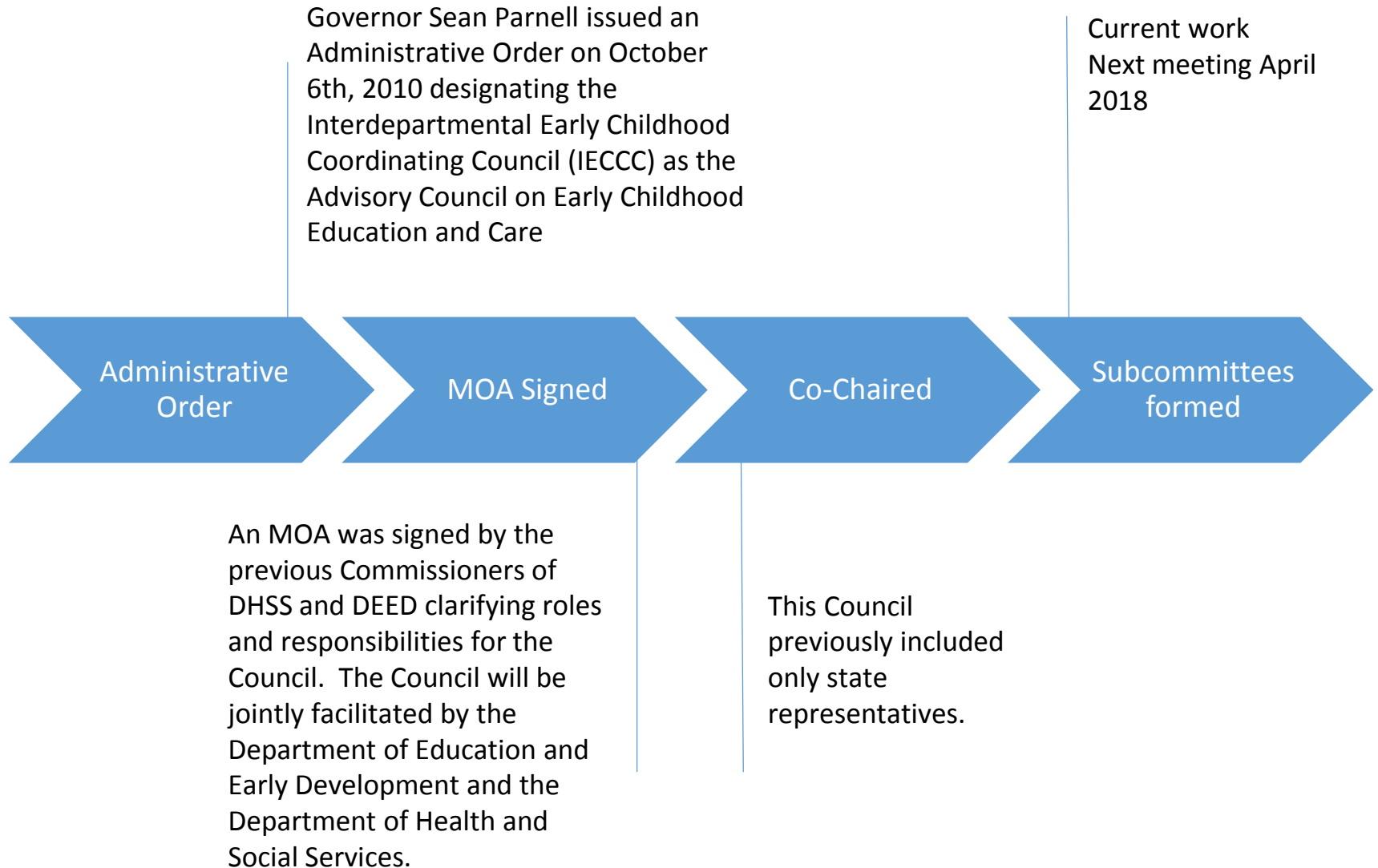
Policy Councils are organized differently in each state.

Several federal initiatives require state advisory councils.

## Federal Initiatives that require a state advisory council

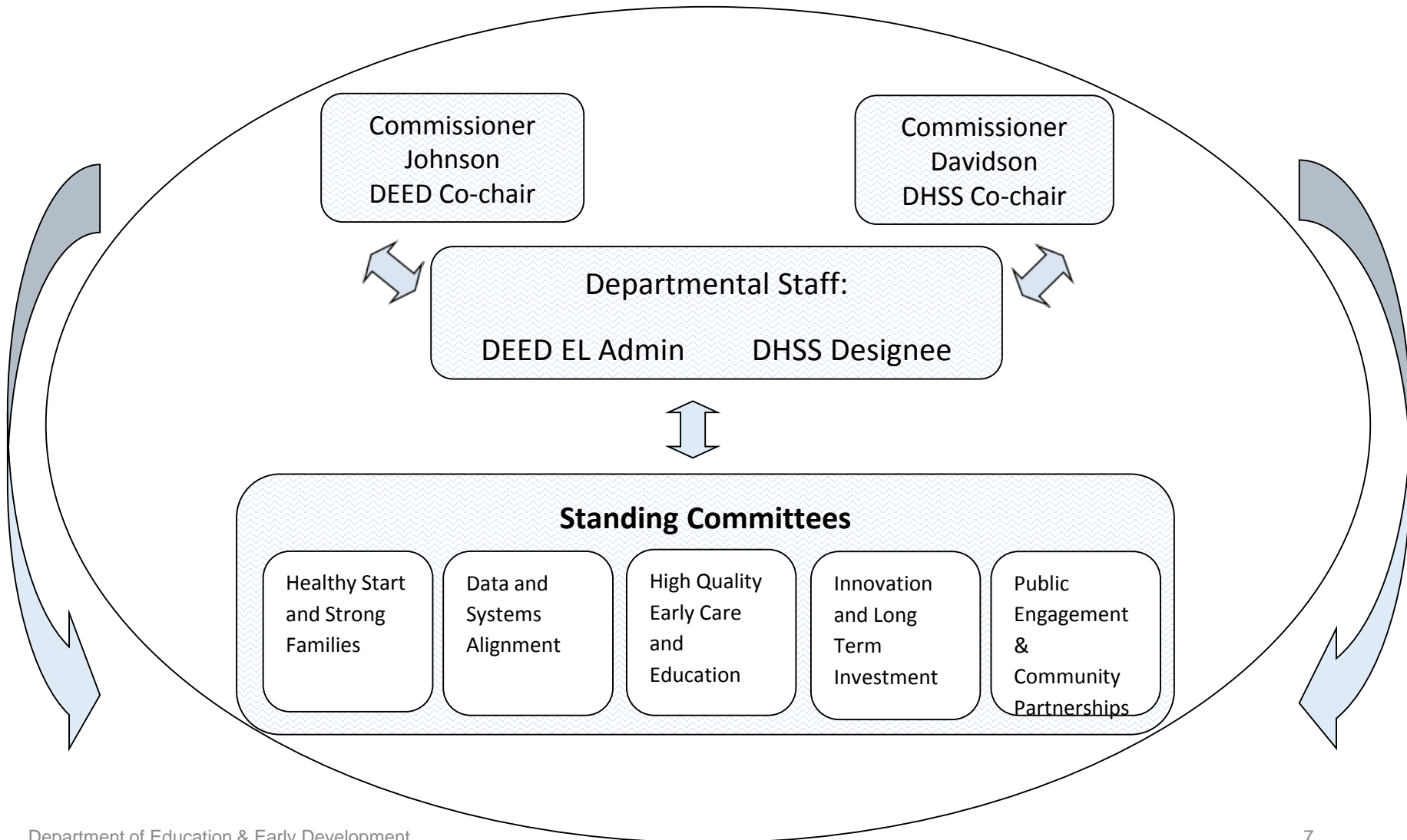
<b>Head Start</b>	<p>Section 642 B(b)(1)(A)(i) of the Head Start Act requires the Governor of each State to designate or establish a council to serve as the State Advisory Council on Early Childhood Education and Care for children from birth to school entry.</p>
<b>MIECHV (Maternal Infant Early Childhood Home Visiting)</b>	<p>Recipients should ensure that home visiting is part of a continuum of early childhood services through project planning and service coordination at state, territory and/or local levels with entities, such as those listed below, and/or their local affiliates, as applicable:</p> <p>The State Advisory Council on Early Childhood Education and Care authorized by § 642B(b)(1)(A)(i) of the Head Start Act, if applicable</p>
<b>Child Care Development Fund</b>	<p>The State Advisory Council on Early Childhood Education and Care authorized by § 642B(b)(1)(A)(i) of the Head Start Act, if applicable</p>

# AECCC History



# AECCC Structure

Children, youth, families, individual, business, community, regional input is given to and used by all levels of the Council.



# AECCC

## Alaska Early Childhood Coordinating Council





# AECCC Members

## Public

- Office of the Governor
- Commissioner of DEED
- Commissioner of DHSS
- Commissioner of DOL
- Commissioner of Public Safety
- DEED Director of Student Learning
- Head Start Collaboration Director
- Part C/Early Intervention Program Manager
- Child Care Program Manager
- Early Childhood Comprehensive Systems Program Officer
- Representative from UAA
- Alaska Mental Health Board

## Private

- Alaska Association of School Administrators
- Alaska Association of School Boards
- Association for Infant Learning Programs
- Alaska's Child Care Resource and Referral
- Alaska Head Start Association
- Alaska Native Health
- Alaska Libraries Association
- Alaska Children's Trust Mental Health Representative
- Best Beginnings Representative
- Parent Representative
- Business Community Representative

# AECCC Sub-Committee Chairs

Subcommittee	Chair Representative
<b>Healthy Start and Strong Families</b>	Alaska Native Health Association for Infant Learning Programs
<b>Data and Systems Alignment</b>	Alaska Mental Health Board
<b>High Quality Early Care and Education</b>	Representative from UAA Child Care Program Manager
<b>Innovation and Long Term Investment</b>	Alaska Head Start Association Business Community Representative
<b>Public Engagement &amp; Community Partnerships</b>	Alaska Association of School Boards Alaska Children's Trust Best Beginnings Representative

# AECCC Subcommittee Priorities

<b>Healthy Start and Strong Families</b>	<ul style="list-style-type: none"><li>• Map and inventory who is using Strengthening Families and how and advocate to embed Strengthening Families in all DEED and DHSS programs and work of the departments</li><li>• Normalize well child checks and increase adherence to the well child exam schedule among families with children between age 1 and age 2 through targeted messaging to families and providers who see families.</li></ul>
<b>Data and Systems Alignment</b>	<ul style="list-style-type: none"><li>• Baseline data on rate of developmental screening (use of Ages + Stages developmental tool) among children.</li><li>• Research early childhood settings, rates of pay within those settings, and use that information to identify priorities for pay increase.</li><li>• Compile information on funding sources for early childhood services.</li><li>• Identify baseline data for all priorities and data sets to track: 'State of the Alaska Child' report.</li><li>• Review data from well child exams.</li></ul>
<b>High Quality Early Care and Education</b>	<ul style="list-style-type: none"><li>• Identify which early childhood services have the most impact, the biggest return on investment, and which services to focus funding on during this year to expand access; identify and establish data sets to track.</li><li>• Continue to align Quality Recognitions and Improvement Systems (QRIS) for Head Start and preschool programs and create crosswalk between systems; track data for enrollment in QRIS.</li><li>• Begin process to update and revise early learning guidelines to align with kindergarten standards for literacy and math.</li></ul>
<b>Innovation and Long Term Investment</b>	<ul style="list-style-type: none"><li>• Protect funding from prenatal/Title V/MIECHV for early childhood, infant mental health, behavioral health; oppose Medicaid block grants, repeal of Affordable Care Act.</li><li>• Increase braided funding opportunities to expand access to early childhood services.</li></ul>
<b>Public Engagement &amp; Community Partnerships</b>	<ul style="list-style-type: none"><li>• Identify and use community-based solutions to expand access to early childhood services.</li></ul>

# AECCC

## Alaska Early Childhood Coordinating Council



Thank you!