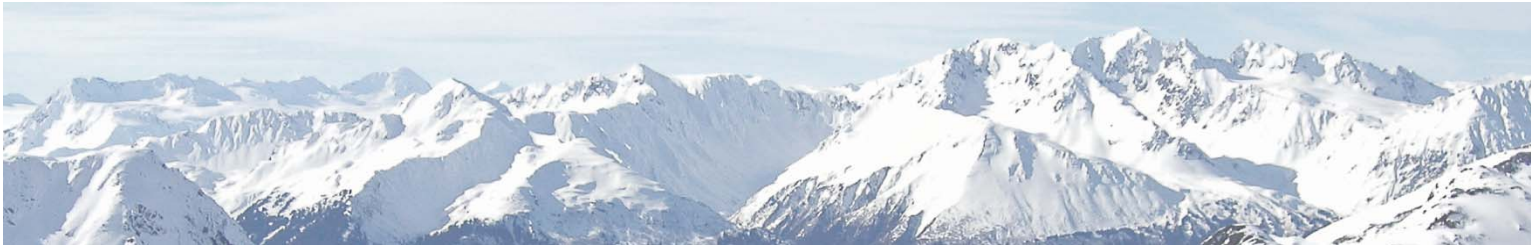


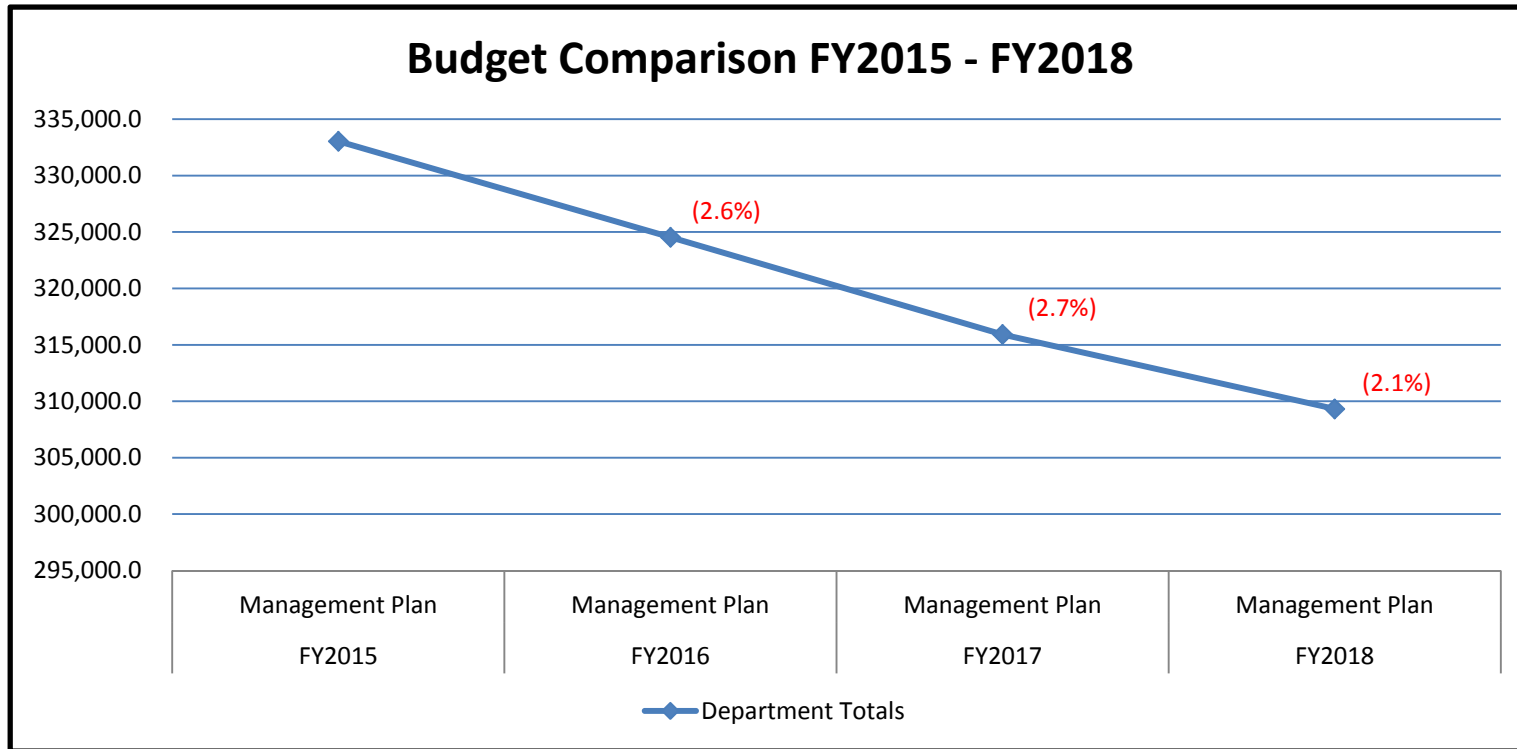


Alaska Department of Corrections



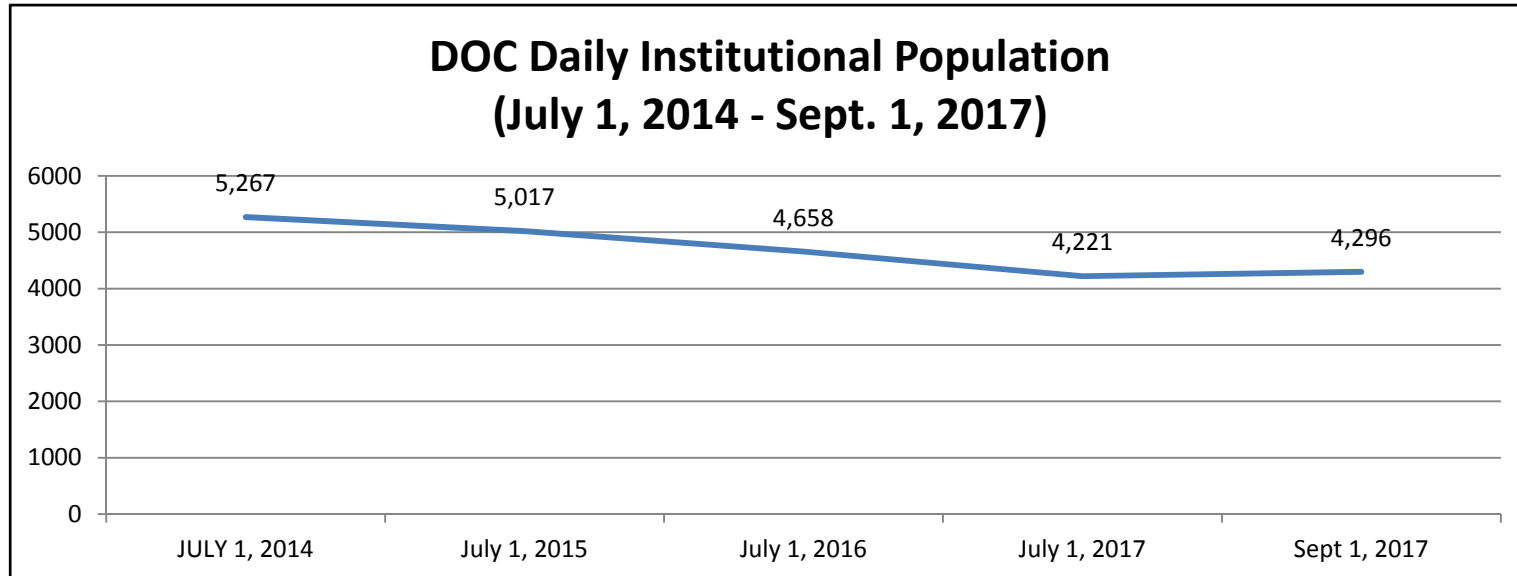
**House Finance Sub-Committee
Department of Corrections
October 5, 2017**

Department Budget Comparison



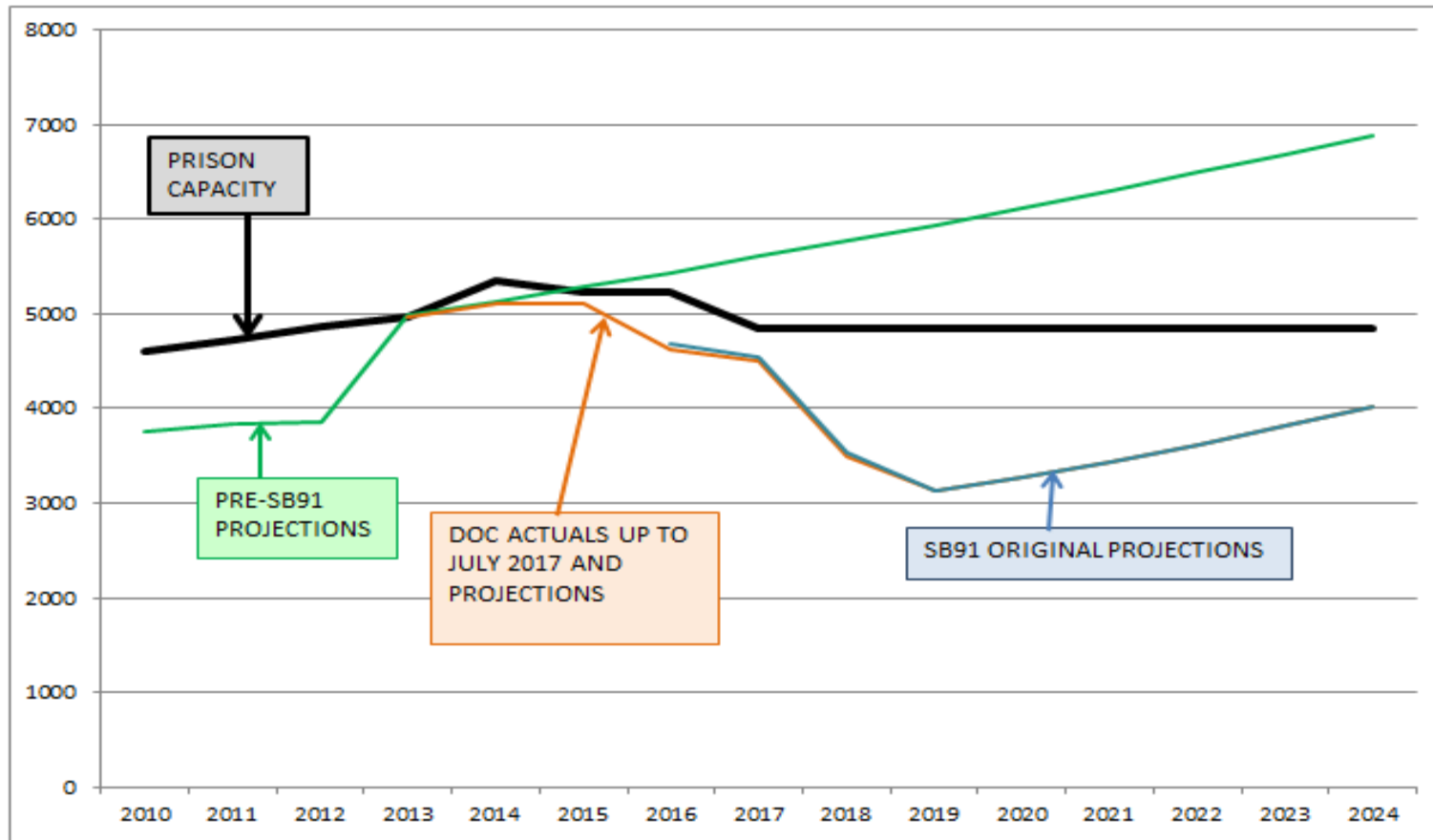
- The Department's budget has decreased by **(7.1%)** from the FY2015 budget of \$333,040.5 to the current FY2018 budget of \$309,319.0.

Institutional Offender Population Daily



- Using a one-day snapshot (first day of each month) of the prison population, since SB91 went in effect, the population has reduced by 437.

Institutional Offender Population Projections

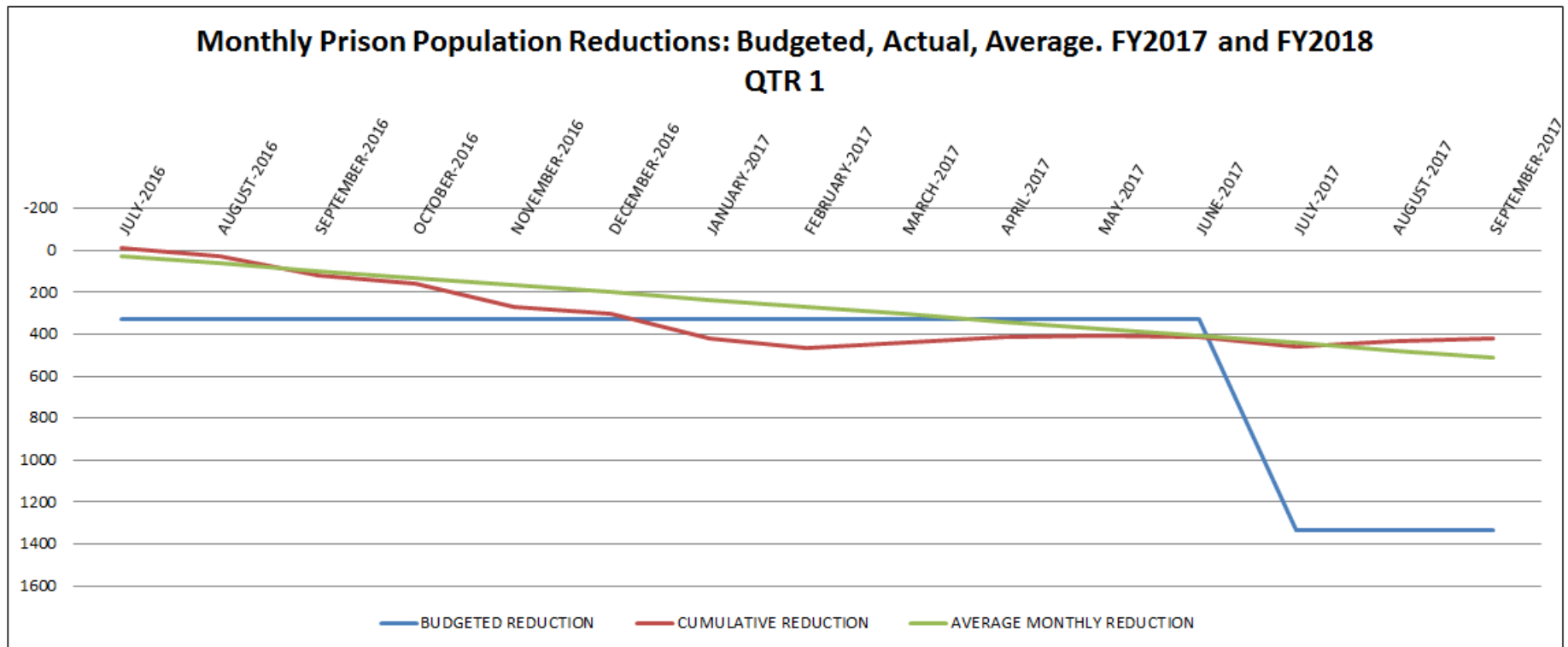


Offender Population

- Annual funding was reduced under SB91 in anticipation of the projected offender population reductions:

	FY2017	FY2018	FY2019	FY2020	FY2021	FY2022
Funding	\$(3,594.6)	\$(18,713.6)	\$(24,756.0)	\$(22,454.1)	\$(20,031.0)	\$(17,350.5)
Population	(248)	(1,009)	(399)	152	160	177

Offender Population Budgeted vs Actual Changes

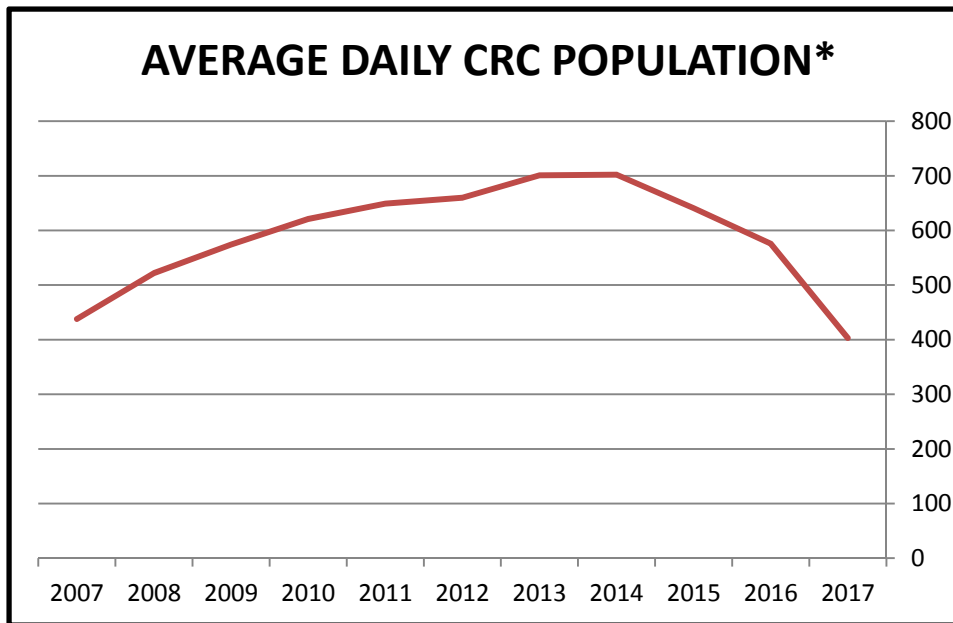


- The budgeted reduction to the offender population was immediate compared to the monthly average prison population which reflects a gradual decline.

Offender Population Community Residential Centers (CRCs)

CRC Average Daily Population*

FISCAL YEAR	AVERAGE DAILY POPULATION
2017	403
2016	576
2015	641
2014	702
2013	701
2012	660
2011	649
2010	621
2009	574
2008	522
2007	438



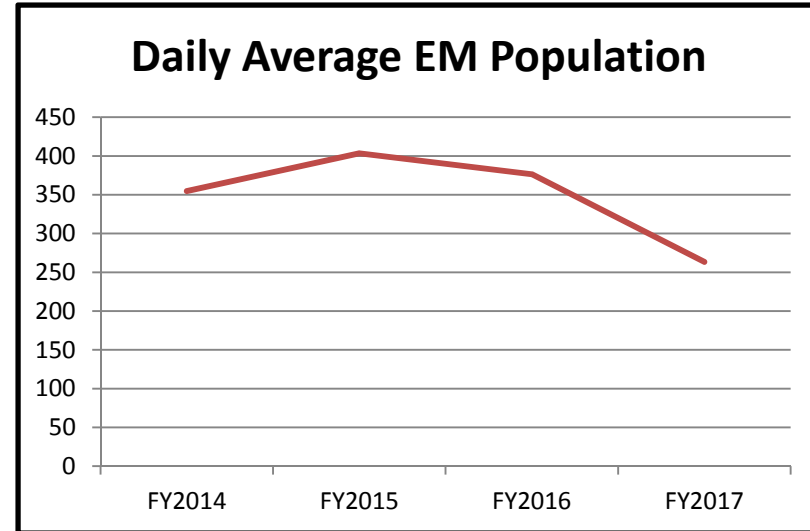
*CRC counts do not include those on probation who voluntarily stay at a CRC.

- The drop in prison population has also resulted in a drop in CRC eligible inmates.

Offender Population Electronic Monitoring (EM)

Daily Average EM Population:
Fiscal Years 2014-2017

Year	Daily Average EM Population	Percent Change
FY2014	354.74	
FY2015	403.51	13.75%
FY2016	376.36	-6.73%
FY2017	263.25	-30.05%



- There has been a drop in the number of EM applicants and placements, due to the incarcerated population being ineligible to be placed on EM.
 - Previously eligible offender not being incarcerated
 - Prior EM placements being diverted to home confinement
 - Remaining inmates do not meet the eligibility for EM placement.

SB91 Funds

Substance Abuse Treatment Program

- Expanded Institutional Substance Abuse Treatment Programming
- Recidivism Reduction funding was appropriated for expanded institutional substance abuse treatment programs.

FY2017	FY2018	FY2019	FY2020	FY2021	FY2022
\$500.0	\$1,000.0	\$1,000.0	\$1,000.0	\$1,000.0	\$1,000.0

- DOC has used this funding during FY2017 to support medically assisted treatment for incarcerated opioid addicts.
 - DOC began offering Vivitrol to releasing offenders with serious opioid addiction.

SB91 Funds

Community Residential Centers (CRCs)

- Implement CRC Substance Abuse Treatment Programming
- Recidivism Reduction funding was appropriated for CRC substance abuse treatment programs.

FY2017	FY2018	FY2019	FY2020	FY2021	FY2022
\$500.0	\$1,000.0	\$1,000.0	\$1,000.0	\$1,000.0	\$1,000.0

- Implemented outpatient substance abuse services for offenders housed at the Nome Seaside CRC
- Northstar Center in Fairbanks continues to offer a low-level outpatient substance abuse treatment program utilizing cognitive behavioral intervention
- Additional expansion of treatment options are currently underway for FY2018 with outpatient treatment being added to the Cordova Center in Anchorage and additional substance abuse treatment services at Glacier Manor in Juneau

SB91 Creates Pretrial Services

- Established a new Statewide Pretrial Services Program effective January 2018
- Funding was appropriated with 29 new positions.

	FY2017	FY2018	FY2019	FY2020	FY2021	FY2022
Funding	\$3,260.1	\$10,187.7	\$10,187.7	\$10,187.7	\$10,187.7	\$10,187.7
PCNs	29	*	*	*	*	*

*Note: 30 PCNs were transferred in the FY2018 budget due to closure of the Palmer Correctional Center. Additional positions are to be made available through the reduction of the offender population or contract services as appropriate.

- Developed and validated an Alaska pretrial risk assessment tool for the Alaska population
- Developed and preparing to deploy a pilot pretrial database in October 2017

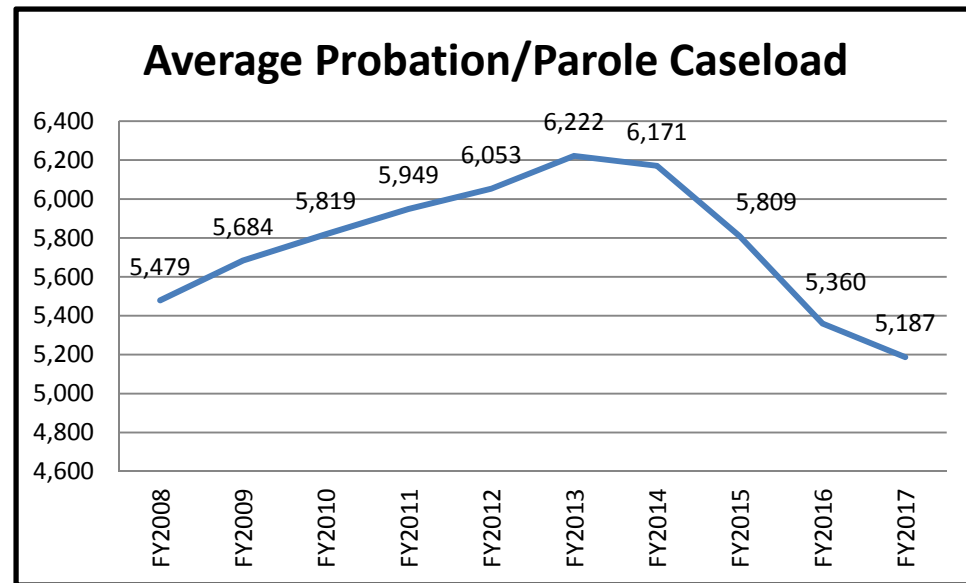
To date, DOC has established Pretrial offices in:

- Anchorage
- Fairbanks
- Palmer
- Temporary office in Juneau

Probation and Parole

- No funding changes were implemented with the anticipated reduction in the number of probation caseloads as it was expected to be offset through the expected increase associated with the offender population releasing from prisons.

Fiscal Year	Average Caseload	Percent Change
FY2008	5,479	
FY2009	5,684	3.61%
FY2010	5,819	2.32%
FY2011	5,949	2.19%
FY2012	6,053	1.72%
FY2013	6,222	2.72%
FY2014	6,171	-0.83%
FY2015	5,809	-6.23%
FY2016	5,360	-8.38%
FY2017	5,187	-3.34%



Offender Reentry

- Modified the DOCs offender management system to assist in the community referral process
- The Offender Management Plan (OMP) reviews the release plan beginning at 90 days to the door (vs 30 days)
- Expansion of transitional options and services for releasing offenders
- Collaboration with Department of Labor Linking Employment Activities for Pre-release (LEAP)
- Coordinated efforts with the DMV to provide releasing offenders with valid state IDs
- Medicaid applications are being prepared in the facilities prior to release.
- A case management program has been implemented in partnership with the Department of Health & Social Services.
- DOC continues to be a partner in assisting the Coalitions (outside service agencies) in training, referrals and in-reach/outreach efforts.



Alaska Department of Corrections



Thank You
Questions?