



Nenana Totchaket Bridge To Resources

MARCH 2017 BY REP. DAVE TALERICO

City of Nenana



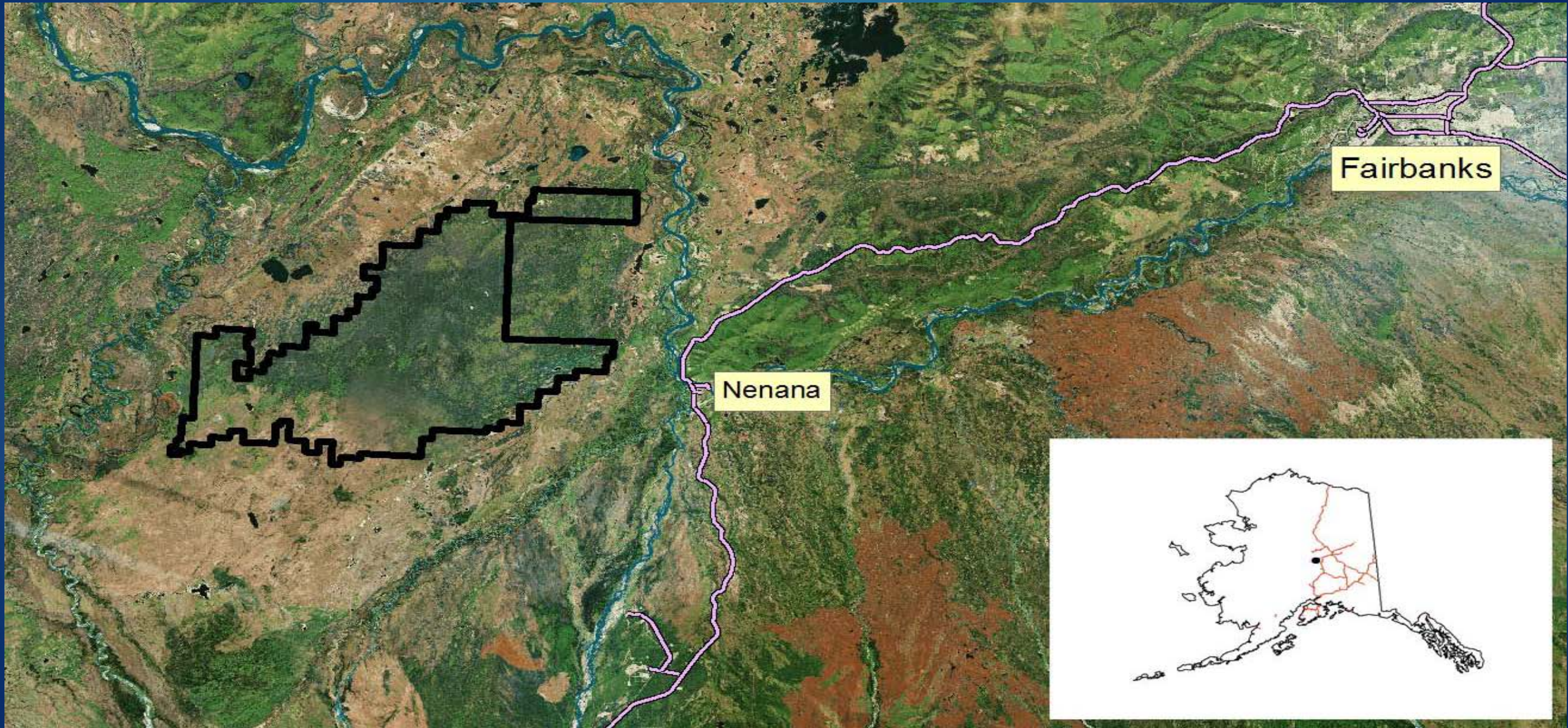
West side of Nenana River



West Nenana Agricultural Project

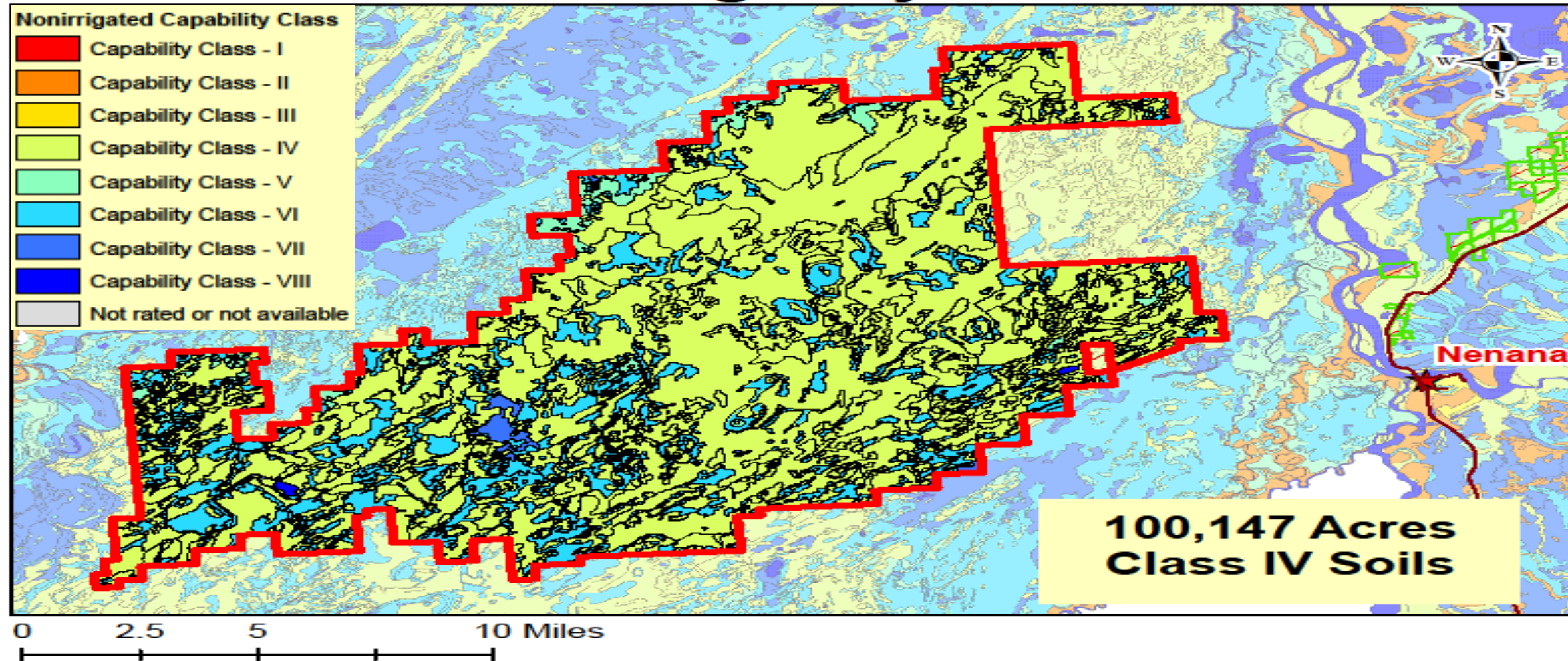
- ▶ The Nenana Totchaket State Agricultural Project encompasses around **133,000 acres** commencing about 6 miles from the west shore of the Nenana River, across from the 10th Ave boat launch and stretches almost to the Kantishna River, approximately 27 miles east to west.
- ▶ The project is composed over 75% class 4 soils.
- ▶ This area has an advantage over other agricultural areas in the northern region, e.g. Delta, in that Nenana has significant more sunlight and degree days for growing crops.
- ▶ It may be possible to grow oats where as it is a marginal crop in Delta for example.
- ▶ In addition to Agricultural potential there is great interest in fee simple lots in that area as well as timber resources on the western boundary.

Less than an hour from Fairbanks



Types of Soils

Nenana Tolchaket Ag Project Area



Phased Ag Project

10 acres	10 acres	20 acres	20 acres	20 acres	20 acres	20 acres	20 acres	10 acres	10 acres
40 acres			40 acres		40 acres		40 acres		
80 acres			80 acres		80 acres		80 acres		

Phase 1

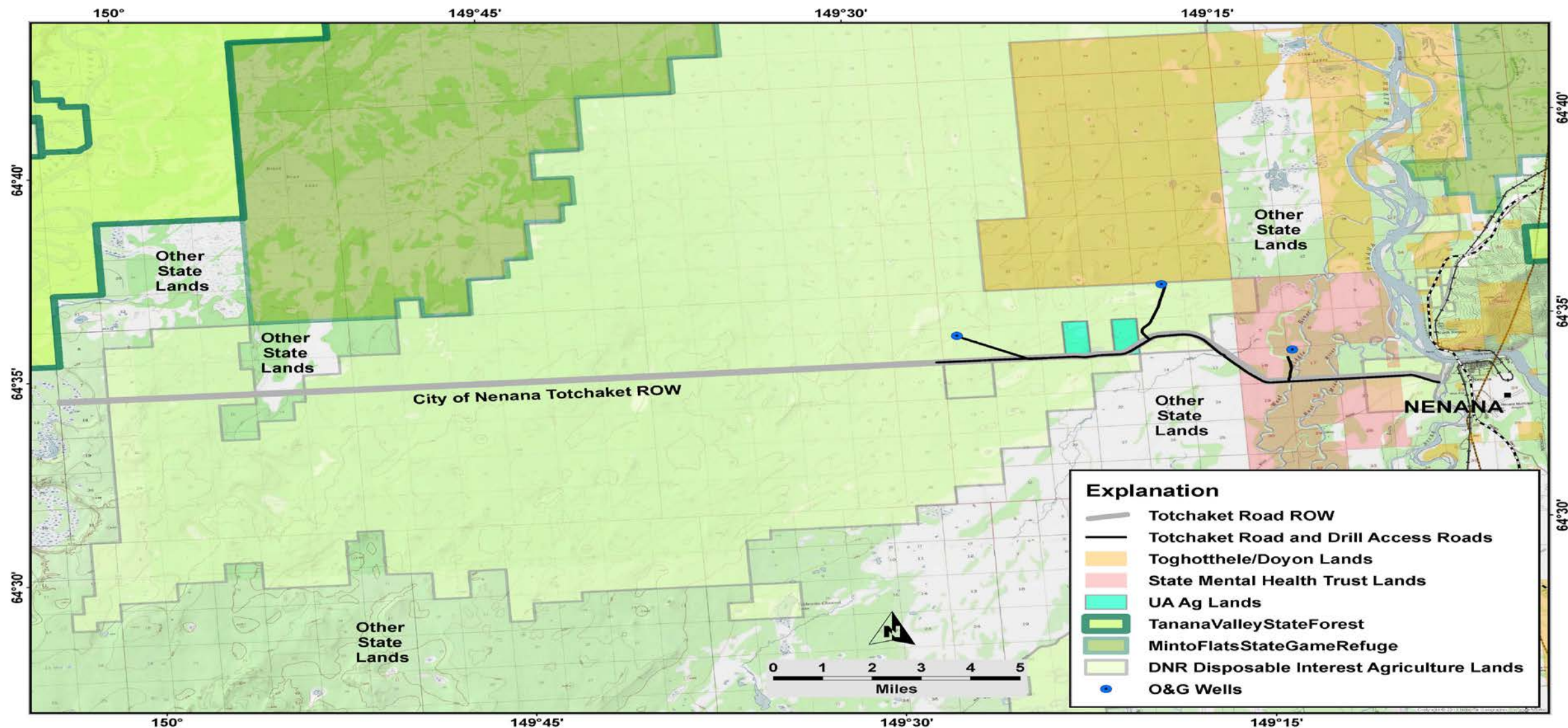
Phase 2

Phase 3

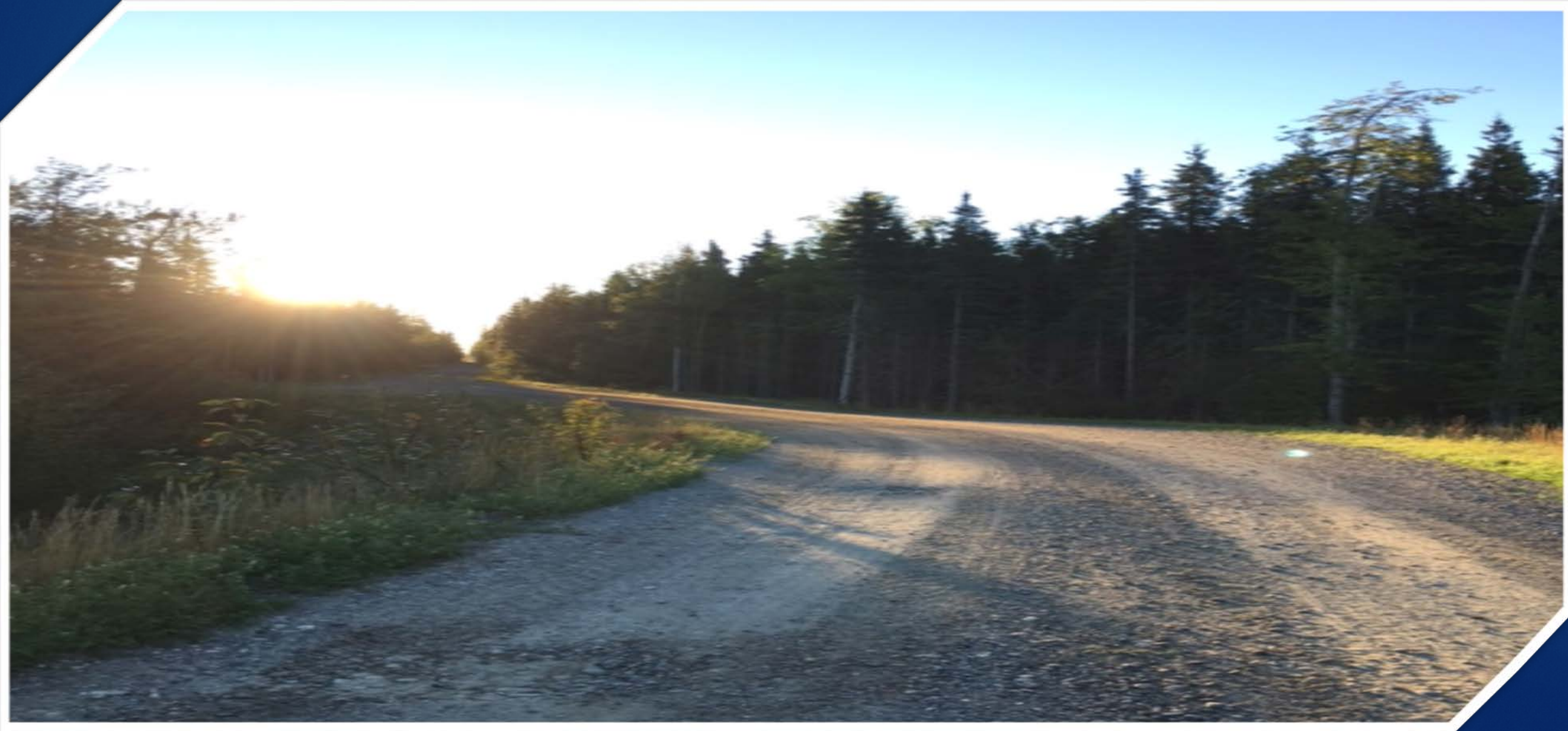
Access to other owned land

- ▶ The interest in the project from all interviewed stakeholders has been positive. Other land owners are listed below
 - Total State Land over 600,000 Acres
 - Toghothele Native Corporation Land 40,000 Acres
 - Alaska Mental Health Trust Land 11,000 Acres
 - University of Alaska Land 640 Acres

Existing Right of Way & Road



Existing Road over 11 Miles



Nenana Totchaket Bridge



Partially Built Bridge



Most pilings already driven



Remaining Materials Sitting On-site



Brief History of the Project

- ▶ Discussion started in 1980 as a road to resources
- ▶ Right of Way granted to City of Nenana by DNR 1984
- ▶ Legislation introduced in 1985 by Sen. Jack Coghill. Passed both bodies and was vetoed by Gov Sheffield.
- ▶ Initial permits granted for construction of ROW roads and small bridges 1992
- ▶ 2008-2009 11 miles of Road and three smaller bridges on ROW built
- ▶ Required NEPA document completed, Army Corp of Engineers permit obtained and Environmental Assessment completed and submitted to the Coast Guard for permit March 2014
- ▶ Partial funding in FY 2013-2014 & smaller little Nenana bridge completed and piles driven

Great potential for our state

- ▶ With 133,000 designated state ag acres of choice farm land and over 470,000 acres of other state lands all Alaskans will benefit from completion of this bridge
- ▶ Existing Totchaket road and completed small bridges would provide instant access to state, Toghotele, university and mental health's land once the Nenana bridge is completed
- ▶ State land can then be sold or leased to farmers, timber harvesters, Oil & gas development etc. thus generating revenue to the state and new Alaskan grown products

Where we are at

- ▶ Waited over three years for a bridge permit from USCG
- ▶ Governor talked with USCG Admiral and we will have the USCG permit this June
- ▶ Looking for remaining funds to complete bridge assembly