



Alaska Longline

FISHERMEN'S ASSOCIATION



Linda Behnken, executive director

Alaska Longline Fishermen's Association (ALFA)

- ALFA founded 1978 to end foreign overfishing, promote Alaska fisheries.
- Members longline for halibut and sablefish; also troll, seine and gillnet for salmon.
- Involved in state, federal and national fisheries issues.



Josh Roper Photography

ALFA's Mission: Promoting Sustainable Fisheries and Thriving Fishing Communities

- Policy Advocacy
- Collaborative Research
- Young Fishermen's* Initiative

*and fisherwomen!



Collaborative Research: ALFA's Fishery Conservation Network



**Empowering stewardship innovation through
research and collaboration**

ALFA's Fishery Conservation Network

Combining the problem-solving genius of fishermen with the rigors of science

- Innovative solutions that improve resource and fishery viability.
- Sharing data, mentoring young fishermen.
- *Small boats, Big ideas:* Increasing the viability of small boat fishing.
- 99 fishermen members



ALFA FCN Projects

- Rockfish Reporting Network
- Bathymetric Mapping Network
- Electronic Monitoring Initiative
- Fuel Efficiency Partnership
- Southeast Alaska Sperm Whale Avoidance Project



Project support and collaborators include: The Oak Foundation, Central Bering Sea Fishermen's Association, National Bycatch Reporting and Engineering Program, Alaska Fisheries Development Foundation, University of Alaska SE, Sitka Sound Science Center, Scripps Institute of Oceanography, National Marine Fisheries Service, North Pacific Research Board, City of Sitka, Alaska Conservation Foundation

Managing Rockfish Bycatch

- Halibut and Sablefish fishermen are allowed a “bycatch” of rockfish
- Rockfish are long-lived (up to 120 years!) and slow to recover if overfished
- Rockfish overfishing has triggered fishery closures on the west coast and British Columbia
- In 2009, the AK Board of Fisheries challenged commercial and charter fishermen to control bycatch



ALFA Rockfish Reporting Network

- Logbook data collected from halibut and sablefish fishermen.
- Data verified with ADFG fish tickets.
- Catch and bycatch rates logged by set quartile.
- 25 members contributing bycatch information.
- Provide fishermen with the tools to control bycatch rates.

Term Whale Hotline Number: 907-747-3600

Page: _____ of _____ for trip

ALFA Fishery Conservation Network Logbook Sheet: Bycatch

Vessel: _____

Date: _____ % DSR _____ % DSR _____ % DSR _____ % DSR _____
 Set: _____ % slope _____ % slope _____ % slope _____ % slope _____
 Trip: _____ % Target _____ % Target _____ % Target _____ % Target _____
 Target species: _____ fm _____ fm _____ fm _____ fm _____

Observations: _____

Total for Set: _____
 DSR _____ Slope _____
☐ lbs or ☐ Numbers
 Target _____
☐ lbs or ☐ Numbers

Date: _____ % DSR _____ % DSR _____ % DSR _____ % DSR _____
 Set: _____ % slope _____ % slope _____ % slope _____ % slope _____
 Trip: _____ % Target _____ % Target _____ % Target _____ % Target _____
 Target species: _____ fm _____ fm _____ fm _____ fm _____

Observations: _____

Total for Set: _____
 DSR _____ Slope _____
☐ lbs or ☐ Numbers
 Target _____
☐ lbs or ☐ Numbers

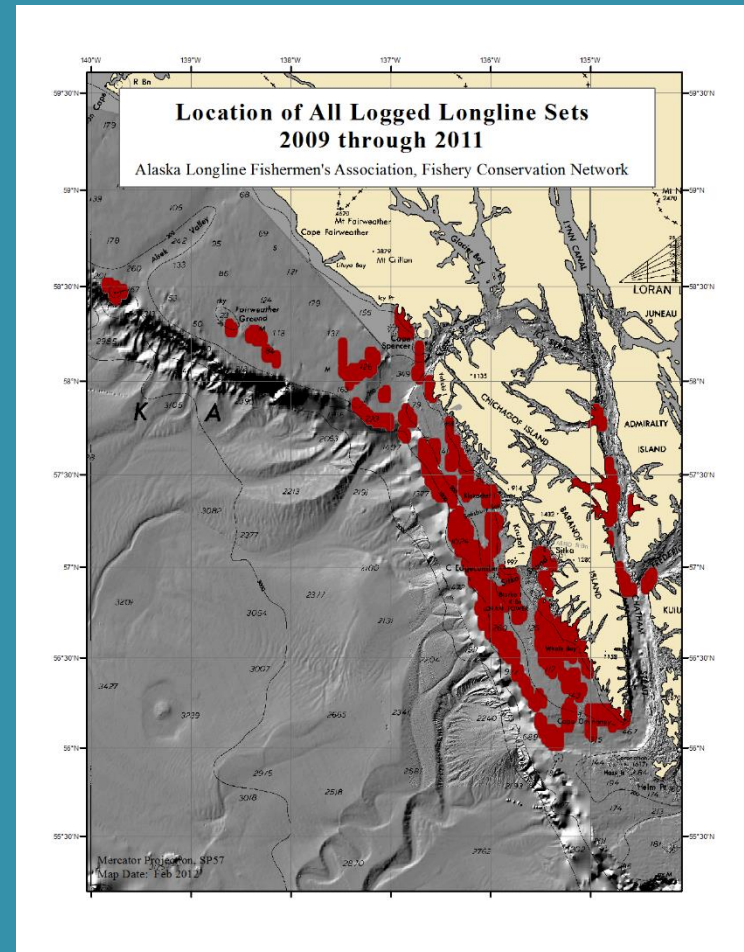
Date: _____ % DSR _____ % DSR _____ % DSR _____ % DSR _____
 Set: _____ % slope _____ % slope _____ % slope _____ % slope _____
 Trip: _____ % Target _____ % Target _____ % Target _____ % Target _____
 Target species: _____ fm _____ fm _____ fm _____ fm _____

Observations: _____

Total pounds from fish ticket: Halibut: _____ Sablefish: _____ Yelloweye: _____ other DSR: _____
 SR: _____ RE: _____ Idiots: _____ other slope: _____ pelagic rockfish _____

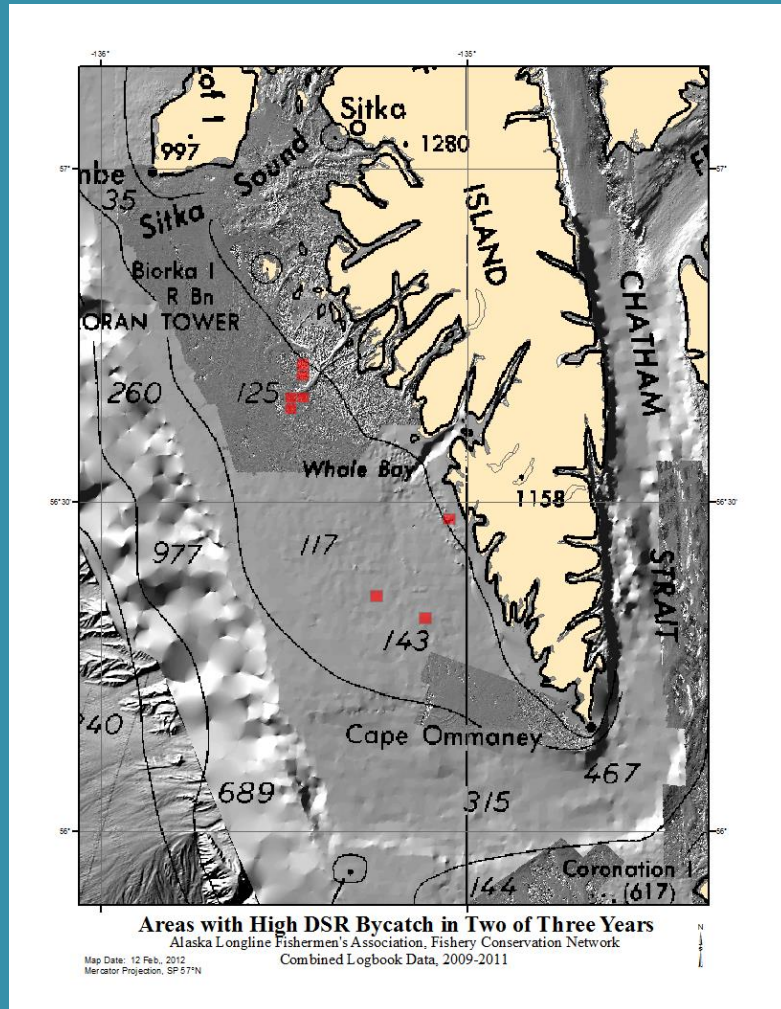
Reducing Rockfish Bycatch

- Catch and bycatch rate data compiled by area and mapped over seafloor bathymetry (more on bathymetry soon!)
- Bycatch hot spots identified; individual set data provided to FCN members.

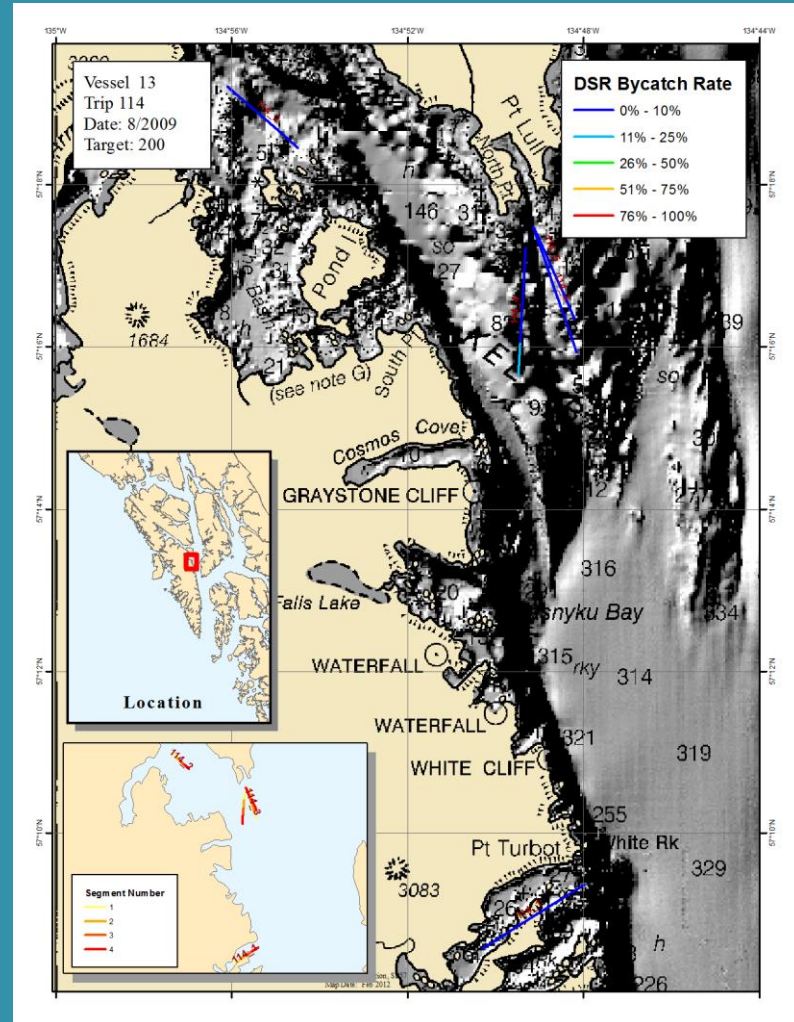


Reducing Rockfish Bycatch

Identifying bycatch hotspots

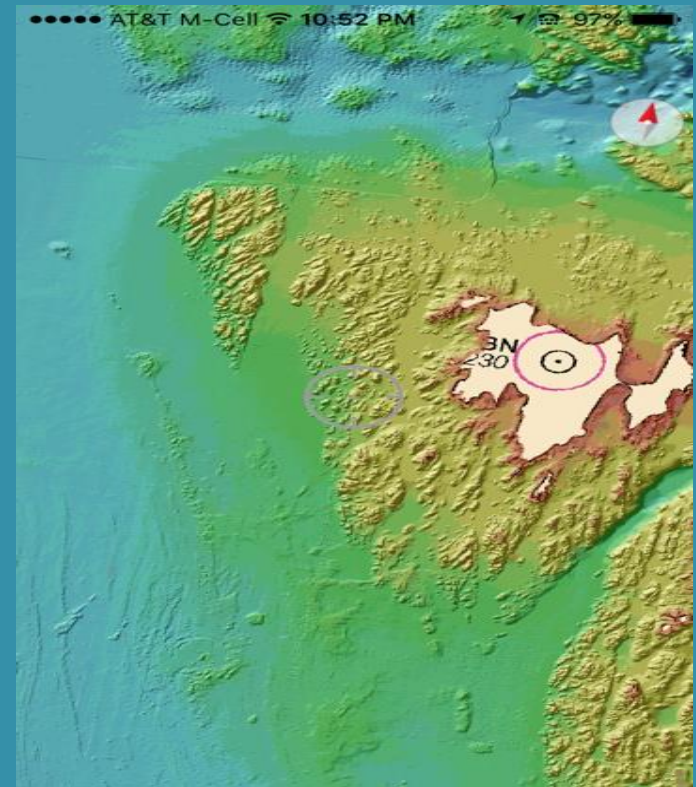
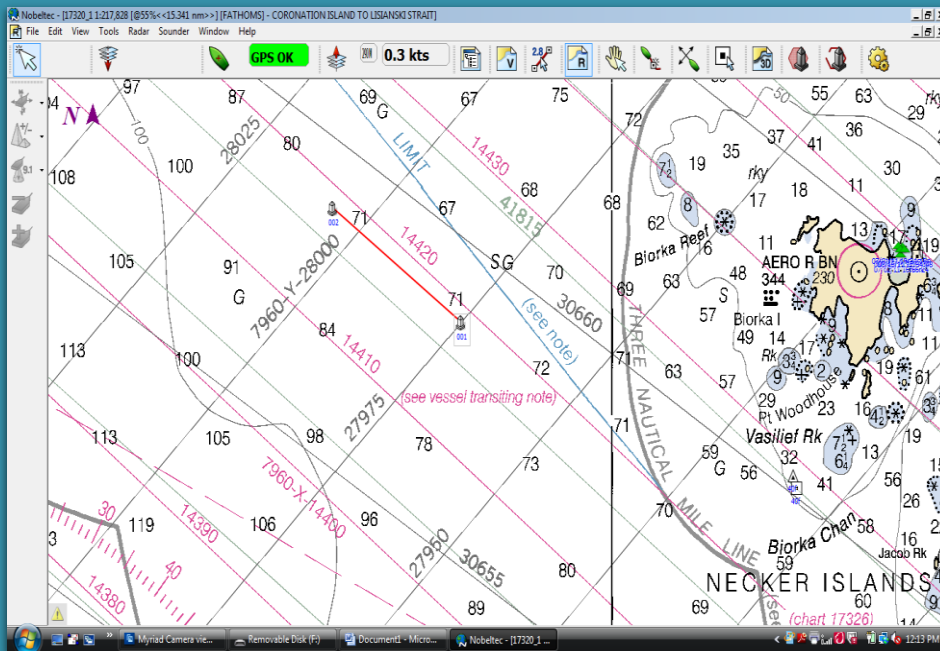


Overlay bathymetry with set data



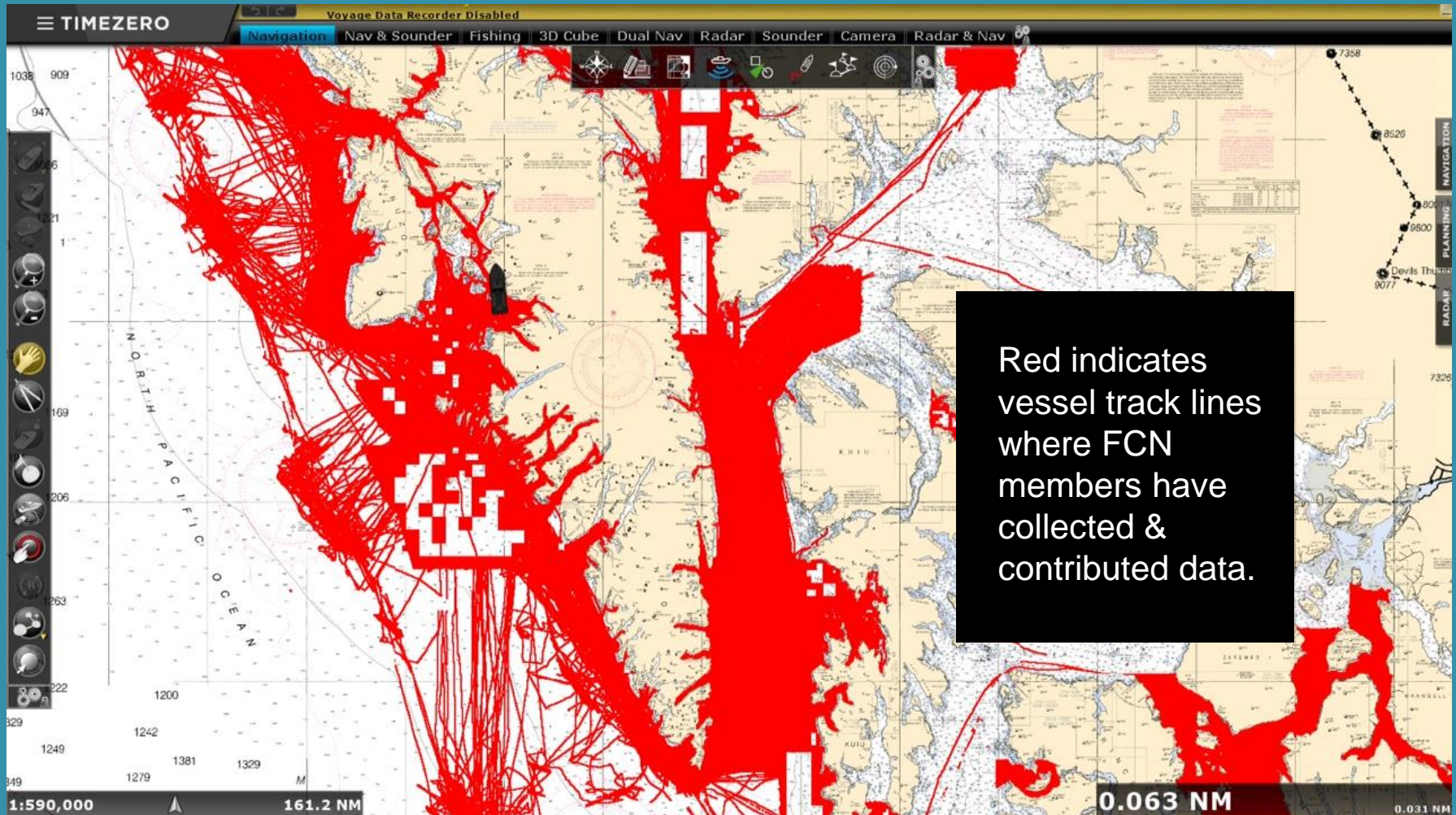
ALFA Bathymetric Mapping

- Provide fishermen with tools to visualize benthic structure
- Control rockfish bycatch
- Improve fishing efficiency
- 63 fishermen contributing to data set

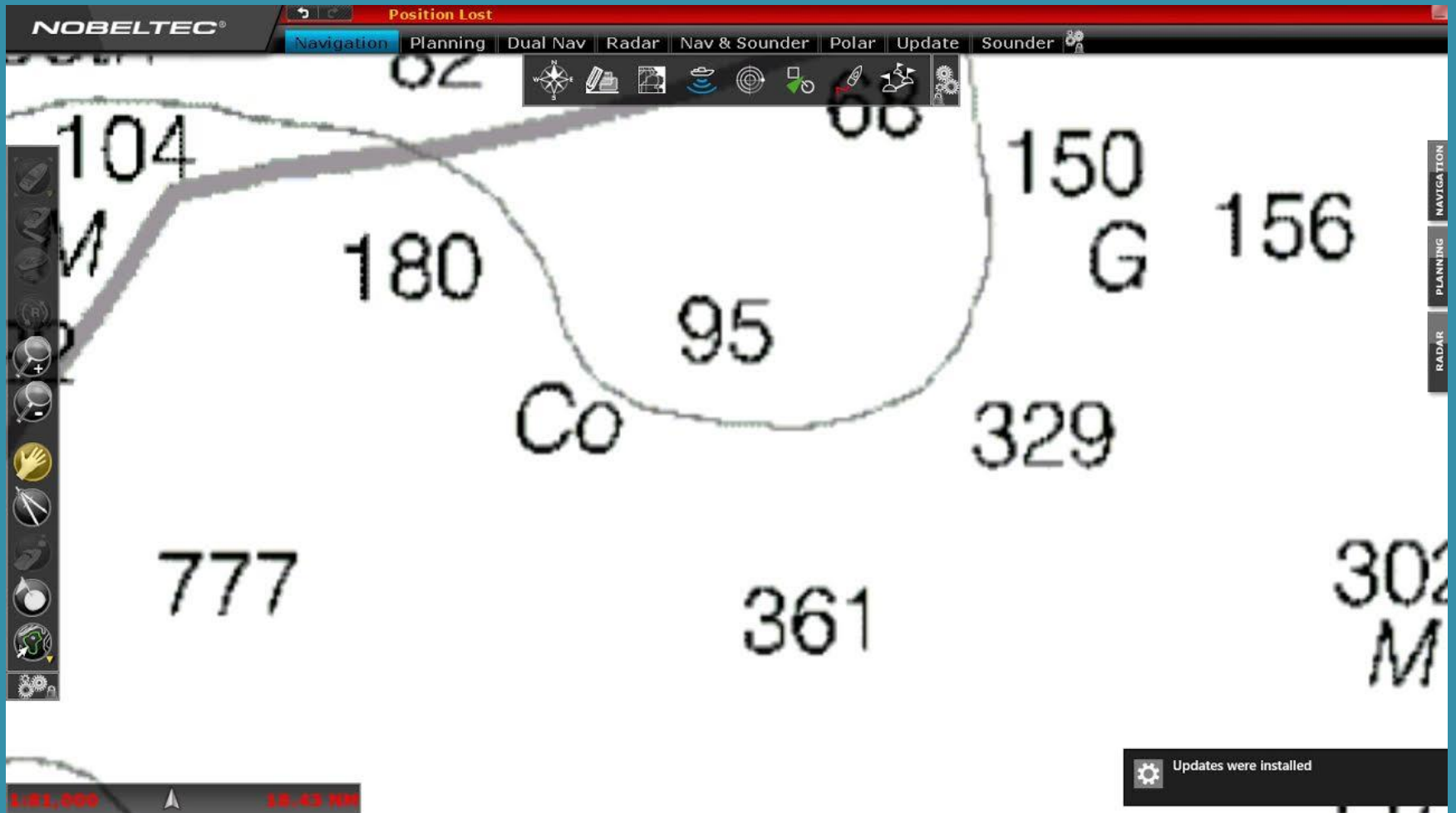


Project participants include: ALFA, Furuno/ Nobletec, ADFG & volunteer fishermen.
Support provided by: Oak Foundation

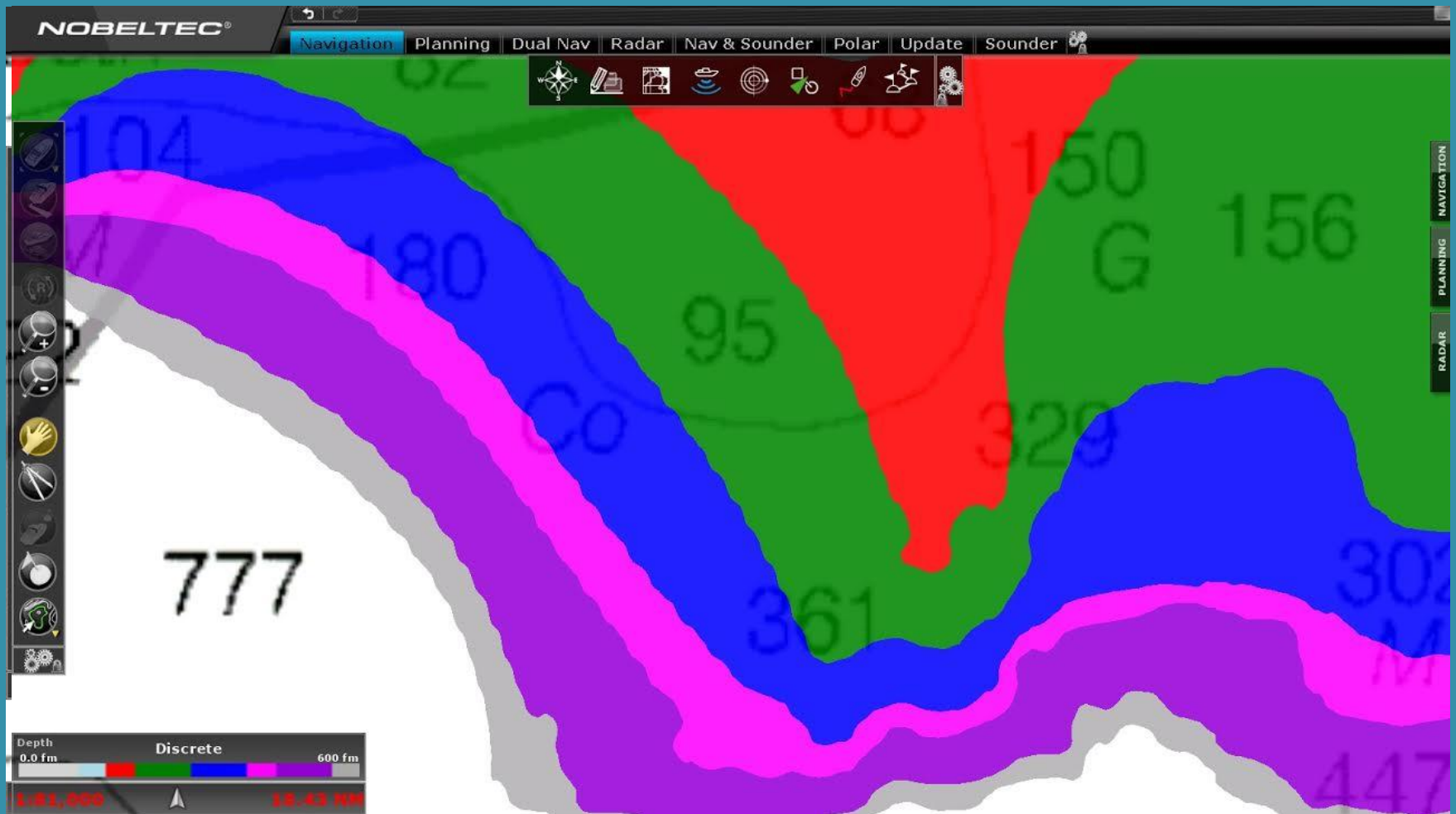
ALFA Bathymetric Mapping Network



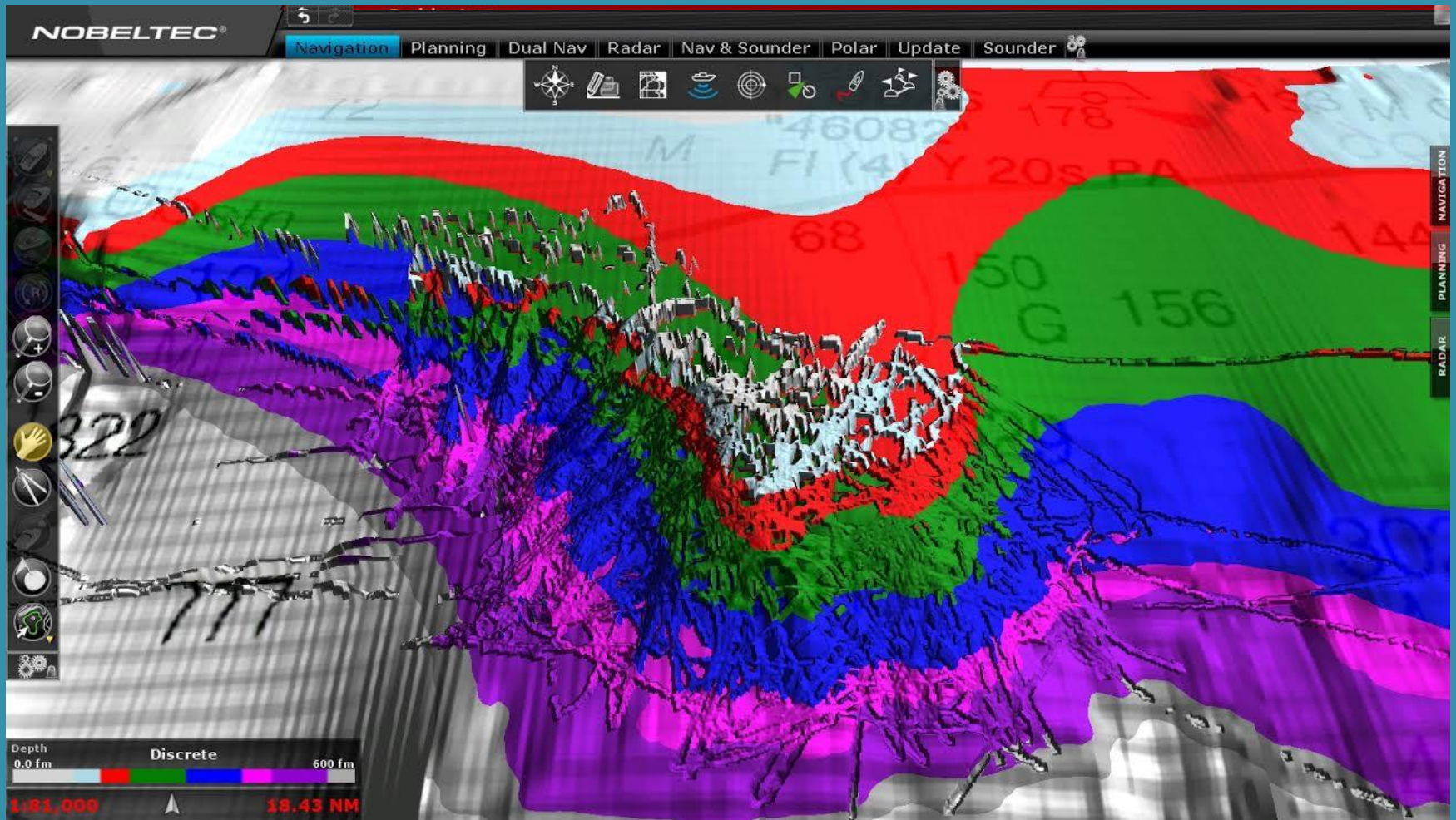
Bathymetric Mapping



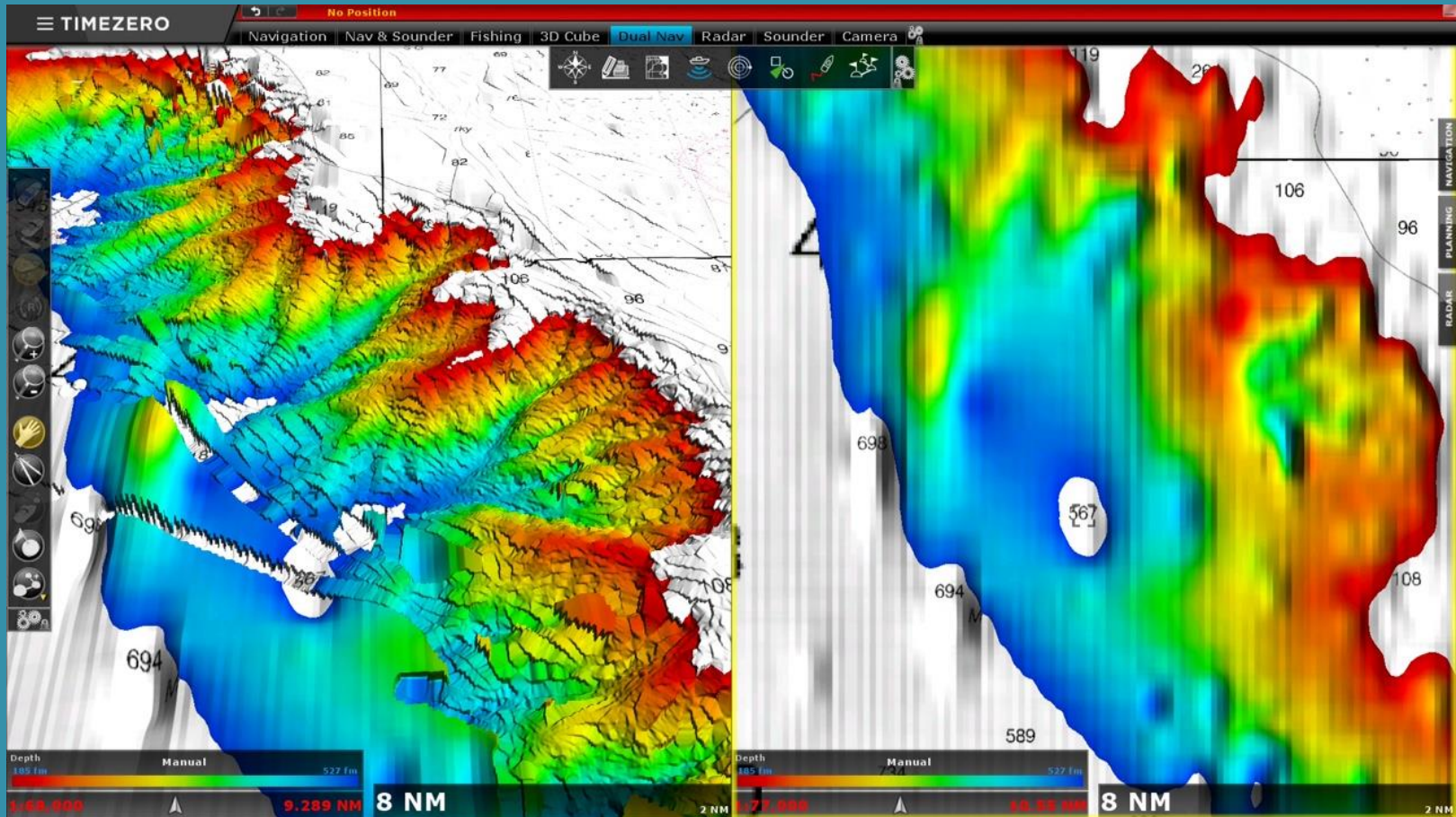
Bathymetric Mapping



Bathymetric Mapping



Bathymetric Mapping



Bathymetry + Rockfish Mapping

- In three years, FCN members reduced rockfish bycatch by:
 - 20% in the halibut fishery
 - 6% in the sablefish fishery
- Current focus: maintaining rockfish bycatch at or below permitted bycatch levels.



A large sperm whale is breaching the ocean surface, creating a massive splash of white water. The whale's dark, curved back and large pectoral fins are visible above the water. In the background, a fishing boat with a white cabin and blue hull is partially visible. Several people are on the boat, some looking towards the whale. The sky is overcast and grey.

Thank you!

Southeast Alaska Sperm Whale Avoidance Network
A Fishery Conservation Network collaboration