



**AT-SEA PROCESSORS ASSOCIATION**

Partners for Healthy Fisheries

# House Special Committee on Fisheries

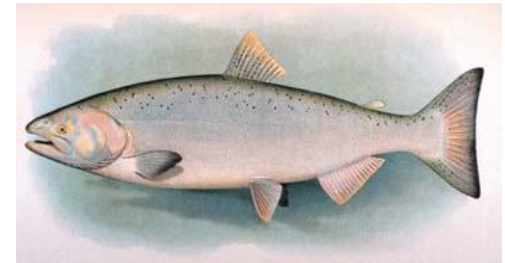
**Innovative approach to reducing bycatch**

March 9, 2017

Stephanie Madsen, Executive Director  
Juneau, Alaska

# Presentation Outline

- ▶ Who we are
  - At-sea Processors/Pollock Conservation Cooperative
- ▶ Brief overview of Regulatory Requirements
  - Incentive Plan Agreements- What are they?
- ▶ How the CP fleet is reducing its Chinook bycatch
  - Avoiding hotspots
  - Effect of vessel-level incentives
  - Communication
  - Required use of excluders
  - Additional vessel performance indicator



# At-sea Processors Association - Who are we?





## Alaska Pollock:



- ✓ A cousin to cod; flaky white meat and mild flavor
- ✓ Largest fishery in the U.S.; largest certified sustainable fishery in the world.



- ✓ American Fisheries Act
- ✓ A Federal fishery.
- ✓ 2 Federal observers.
- ✓ Flow scales and cameras



**Amendment 91** to the Bering Sea and Aleutian Islands Groundfish Fishery Management Plan (BSAI FMP) limits Chinook salmon bycatch in the eastern Bering Sea (EBS) pollock fishery.

Implemented in 2011- The approach is designed to motivate fishery participants to avoid Chinook salmon bycatch at the individual vessel level under any condition of pollock and Chinook abundance in all years. The vessel-level incentives are created through contracts among the fishery participants.

**Amendment 110** modified program to included a chum salmon bycatch avoidance program, provided for a lower limit in times of low Chinook returns to Western Alaska and requested additional incentives for consistently poor performers.

Implemented in 2017



# Chinook PSC Limits

|            | Low abundance limit | Performance Standard limit | Absolute Limit |
|------------|---------------------|----------------------------|----------------|
| Inshore    | 18,525              | 26,484                     | 33,390         |
| Mothership | 2,599               | 3,707                      | 4,674          |
| CDQ        | 2,732               | 3,883                      | 4,896          |
| CP         | 9,462               | 13,516                     | 17,040         |
|            |                     |                            |                |
| PCC        | A season            |                            | 13,818         |
| HSCC       | B season            |                            | 3,222          |
| OP         |                     |                            |                |



# What is an IPA?

- ▶ Incentive Plan Agreement (CP IPA) is designed to provide the incentives necessary to achieve the goals and objectives of Amendment 91/110.
- ▶ The plan:
  - builds on experience gained in the development and refinement of time-and-area-based, rolling hot-spot avoidance programs.
  - creates incentives to avoid salmon bycatch by restricting the pollock fishing opportunities of vessels with poor Chinook bycatch performance while allowing vessels with good performance increased access to the fishing grounds.
- ▶ Losing access to good pollock fishing raises vessel operating costs and reduces product values.
- ▶ Avoiding grounds restrictions reduces operating costs and allows for the production of higher-valued products (especially during the A-season), thus increasing profits.

# Primary Incentive Plan Agreement (IPA) components

- ▶ Data gathering, monitoring, reporting, information sharing.
- ▶ Identification of bycatch avoidance areas.
- ▶ Fishing area prohibitions for vessels with poor bycatch performance.
- ▶ A-season closed area & conditional B-season closed areas.
- ▶ Vessel outlier penalties
- ▶ Gear research-Salmon excluders

Annual Report to NPFMC due April 1st





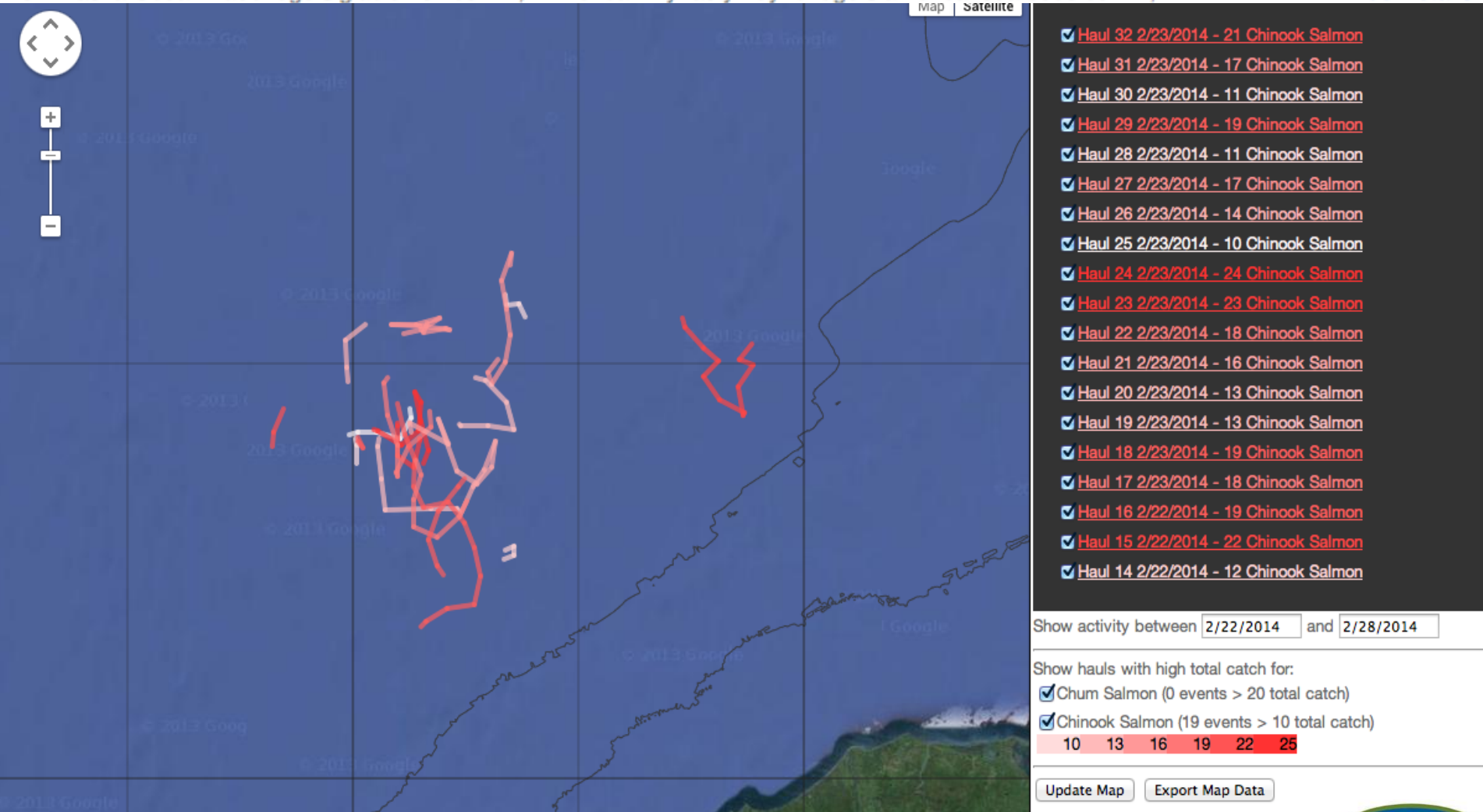
# CP IPA results—alarms and real-time trawl tracks.

Karl Haflinger <karl@seastateinc.com>

March 24, 2014 10:25 AM

To: Alaska Ocean <aobridge@glacierfish.com>, American Dynasty <dynbridge@americanseafoods.com> ,

[Hide Details](#)

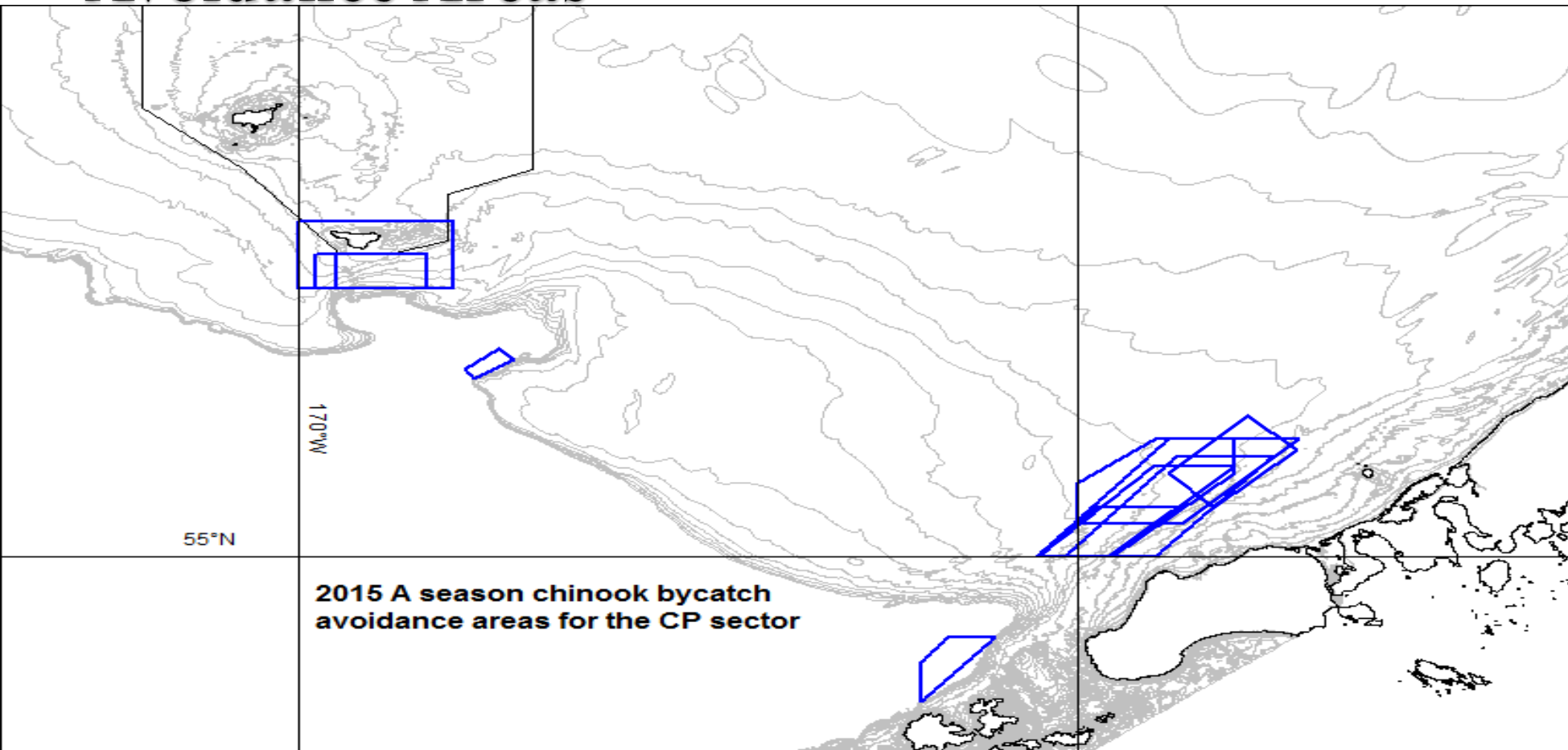


VMS track:

<https://acct.seastateinc.com/Seastate/a.aspx?n=1&a=1507&b=024460568&app1662>



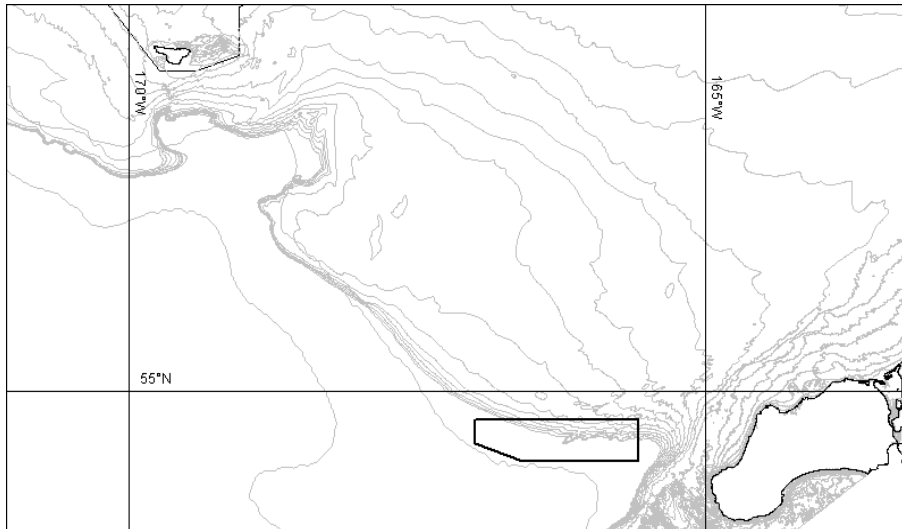
# 2015 CP IPA results—A-season Bycatch Avoidance Areas



| Week                         | 1/29 | 2/5 | 2/12 | 2/19 | 2/26 | 3/5 | 3/12 | 3/19 | 3/26 | 4/02 |
|------------------------------|------|-----|------|------|------|-----|------|------|------|------|
| # of C/Ps excluded from BAAs | 4    | 1   | 0    | 4    | 7    | 2   | 1    | 0    | 0    | 0    |

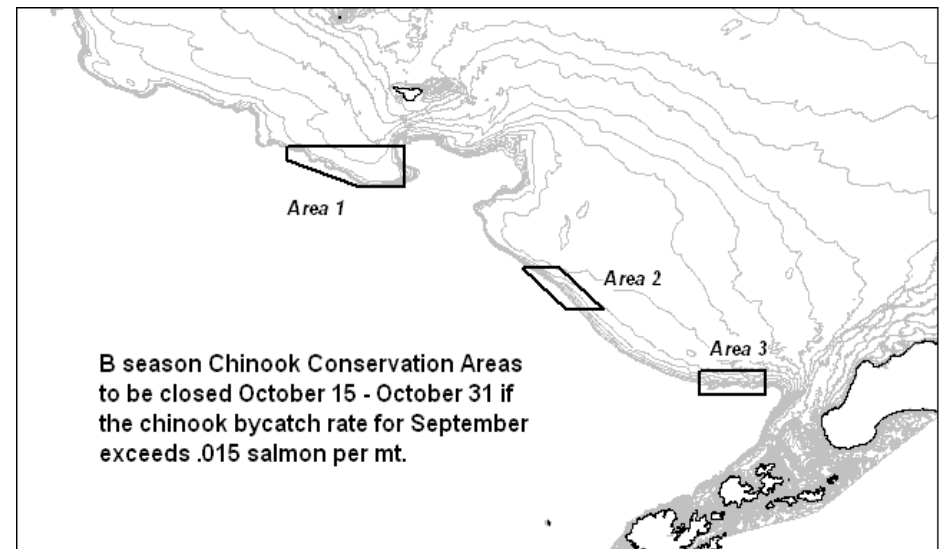
## A-season Chinook Conservation Area

735 square mile area closed to all pollock fishing 100% of the time during A season

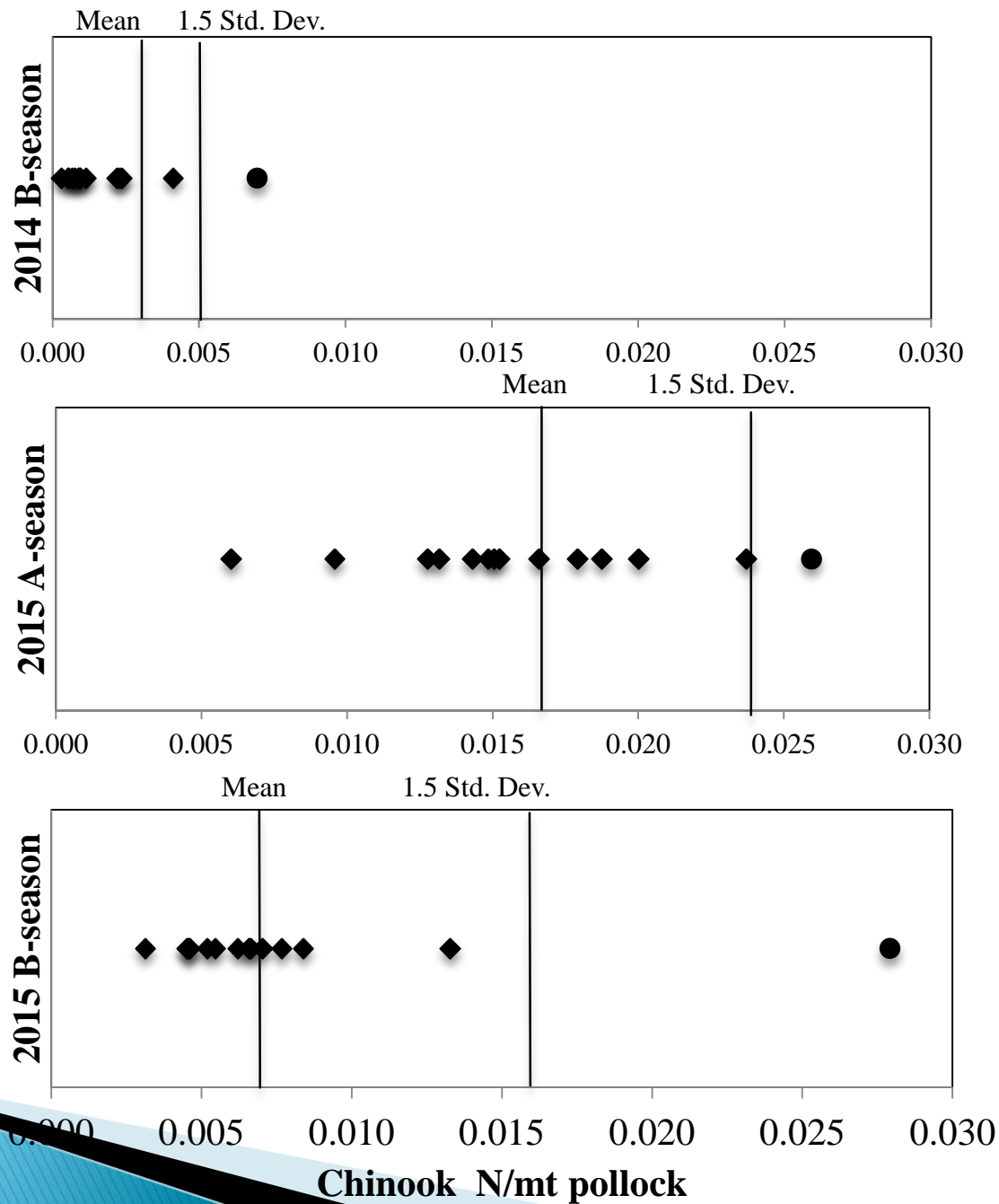


## B-season Chinook Conservation Areas

Areas totaling 1295 square miles closed to CP pollock fishing Oct 15-Oct 31 if the Chinook bycatch rate for September exceeds 1.5 Chinook per 100 tons pollock.



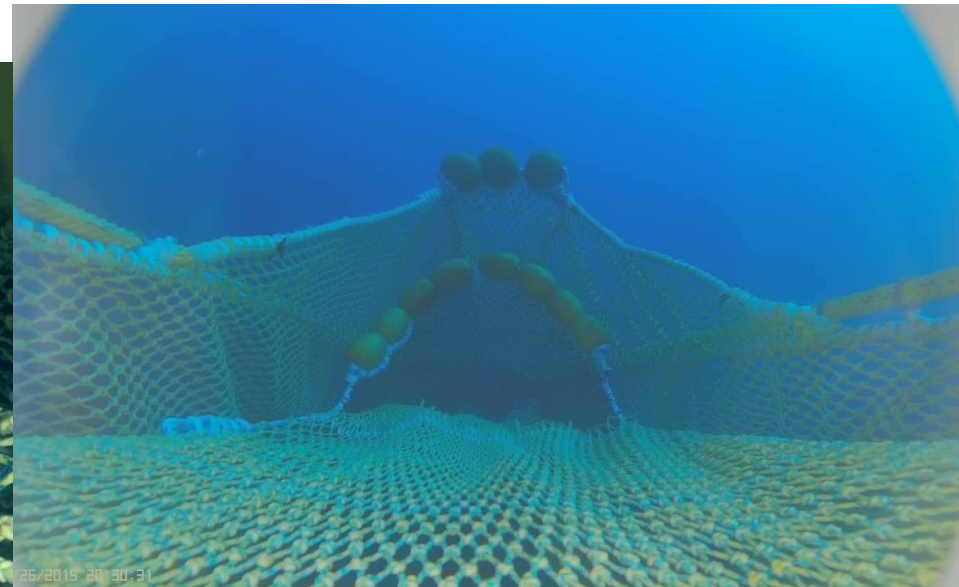
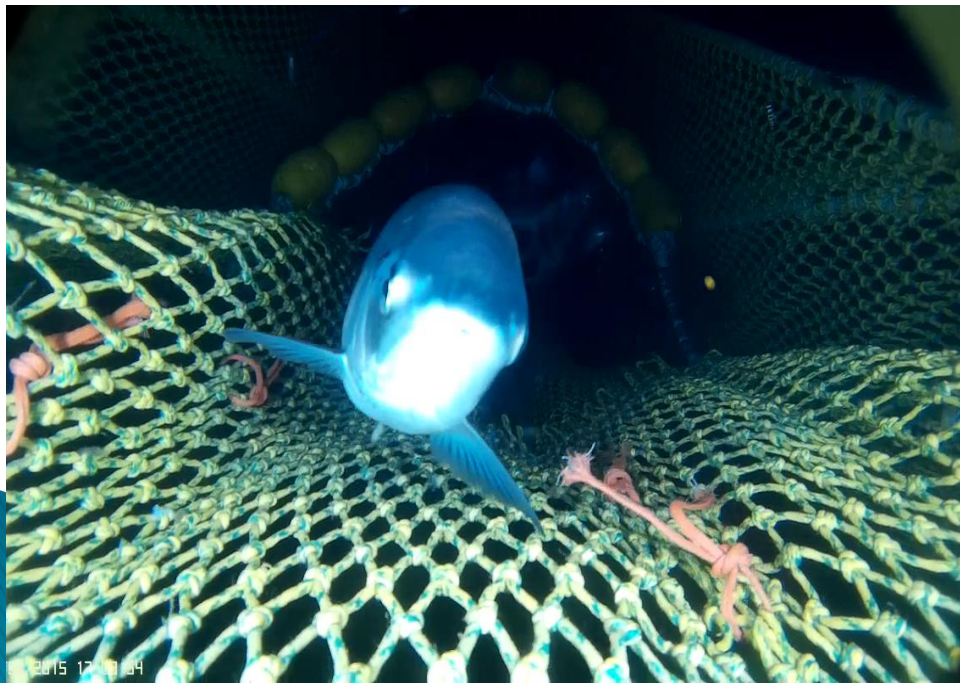
# 2015 CP IPA Amendments



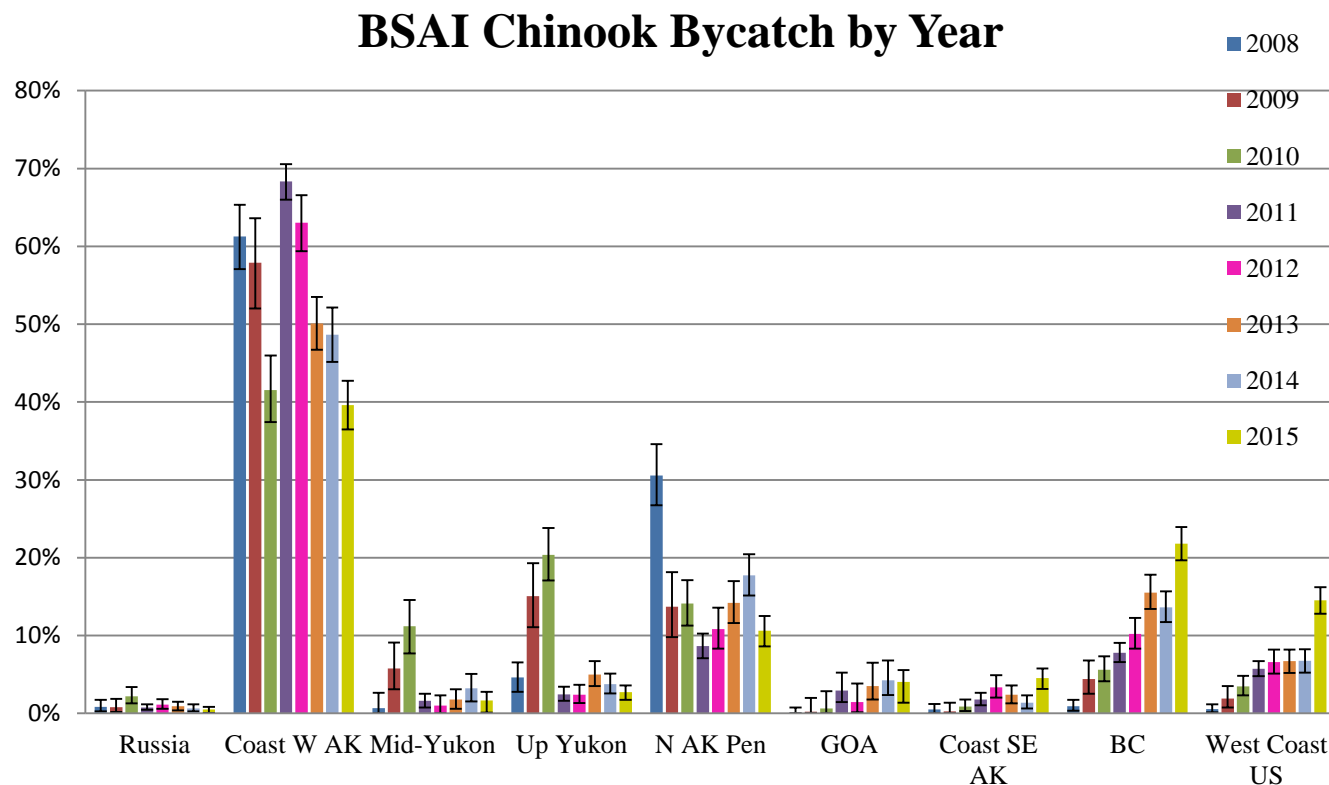


# Use of New Gear Technologies

- MacMarine prototype titanium trawl camera Mobius ActionCam HD wide-angle lens
- Sexton prototype Aluminum trawl camera
- Underwater LED lights attract both chum and Chinook salmon in field experiments



# Genetic Stock Composition Analysis of the Chinook Salmon Bycatch from 2015 BS Pollock Trawl Fishery



**Figure 12.** -- Comparison of yearly stock composition estimates (2008-2015) from the BSAI Chinook salmon bycatch. Estimates from 2011-15 are overall bycatch estimates whereas earlier compositions are of available sample sets. The same genetic baseline and general regional groupings were used in all analyses. GOA group consists of combined values for NWGOA, Copper, and NE GOA. BAYES 95% credible intervals are plotted for yearly estimates.

# Food Bank Efforts

Bean's Café  
Anchorage



Millionaire Club - Seattle

**SEASHARE**

*APA members partner with  
SeaShare, a non-profit  
hunger relief organization,  
by donating 1 million  
meals annually.*



# Summary

The CP IPA is composed of three types of incentive measures:

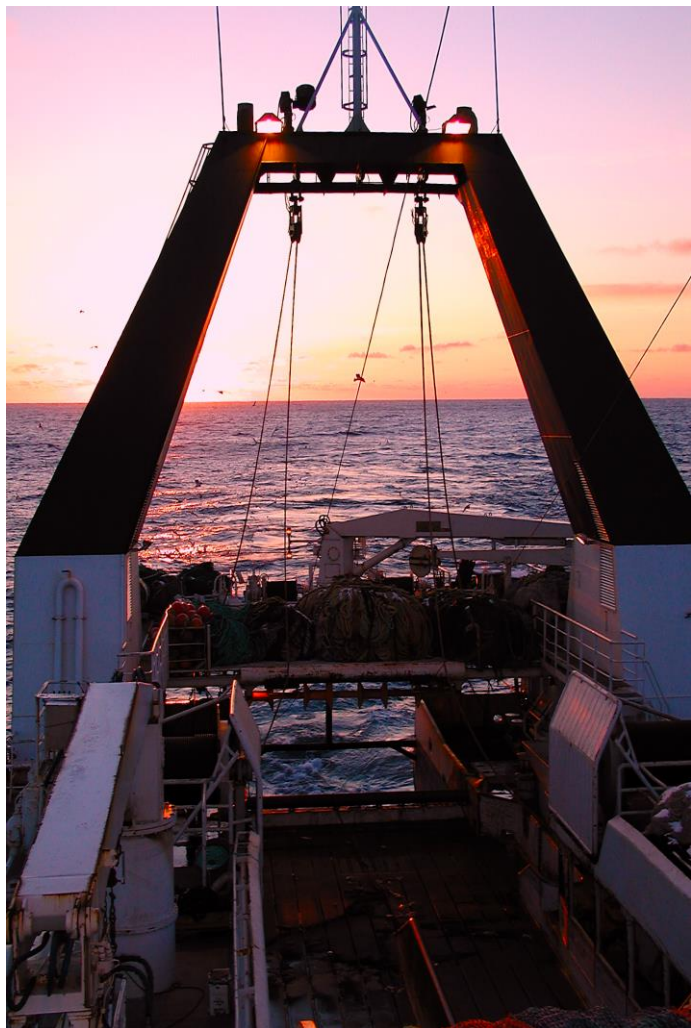
- ▶ The Chinook cap, allocated at vessel level with buffers
- ▶ RHS avoidance areas
- ▶ Seasonal closures

There is evidence that these measures are working to change vessel behavior and improve avoidance of Chinook salmon bycatch:

- ▶ Movement of vessels to avoid higher risk areas.
- ▶ Better Chinook bycatch performance than previously
- ▶ Development of salmon excluders







Thank you!



Aleutian Spray Fisheries  
American Seafoods Company  
Arctic Storm, Inc.  
C/P Northern Hawk  
Glacier Fish Company  
Trident Seafoods Corporation

[www.atsea.org](http://www.atsea.org)

