

# Transportation & Energy Infrastructure Village Cluster Consolidated Services Plan

## Alaska State Legislature House Resources Committee

Presented by:

**Monica James**  
Executive Vice President/Chief Operating Officer

and

**George Owletuck, MA**  
Government Relations Liaison

March 18, 2015



**CALISTA CORPORATION**  
[www.calistacorp.com](http://www.calistacorp.com)

# Community Sustainability

## 1. Transportation Access

- Access In & Out
- Airports, ferries, railroad, ports, roads, trails
- Federal Land restrictions isolate our communities and resources today

## 2. Affordable Energy

- Dependable Power
- Affordable Energy
- Diesel used for heat and electricity is largely imported
- Few Transmission Grids

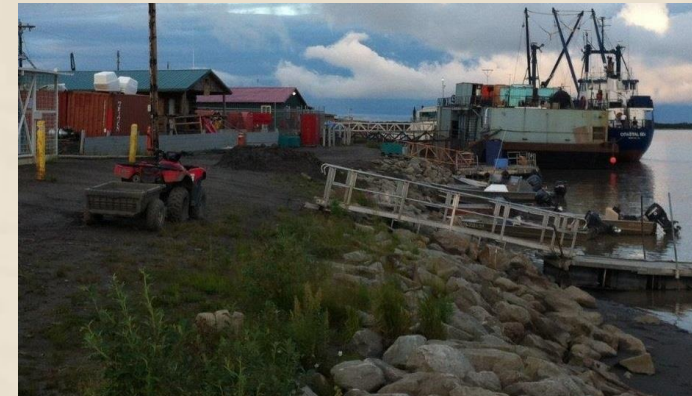
## → Economic Growth ←

**\$1.4M request** for Road Design/Eng/Permits for Pilcher Mtn Project to provide critical source for high quality construction material for projects

**\$7.5M request** for the Emmonak Dock Project that would contribute to expanded economic opportunities

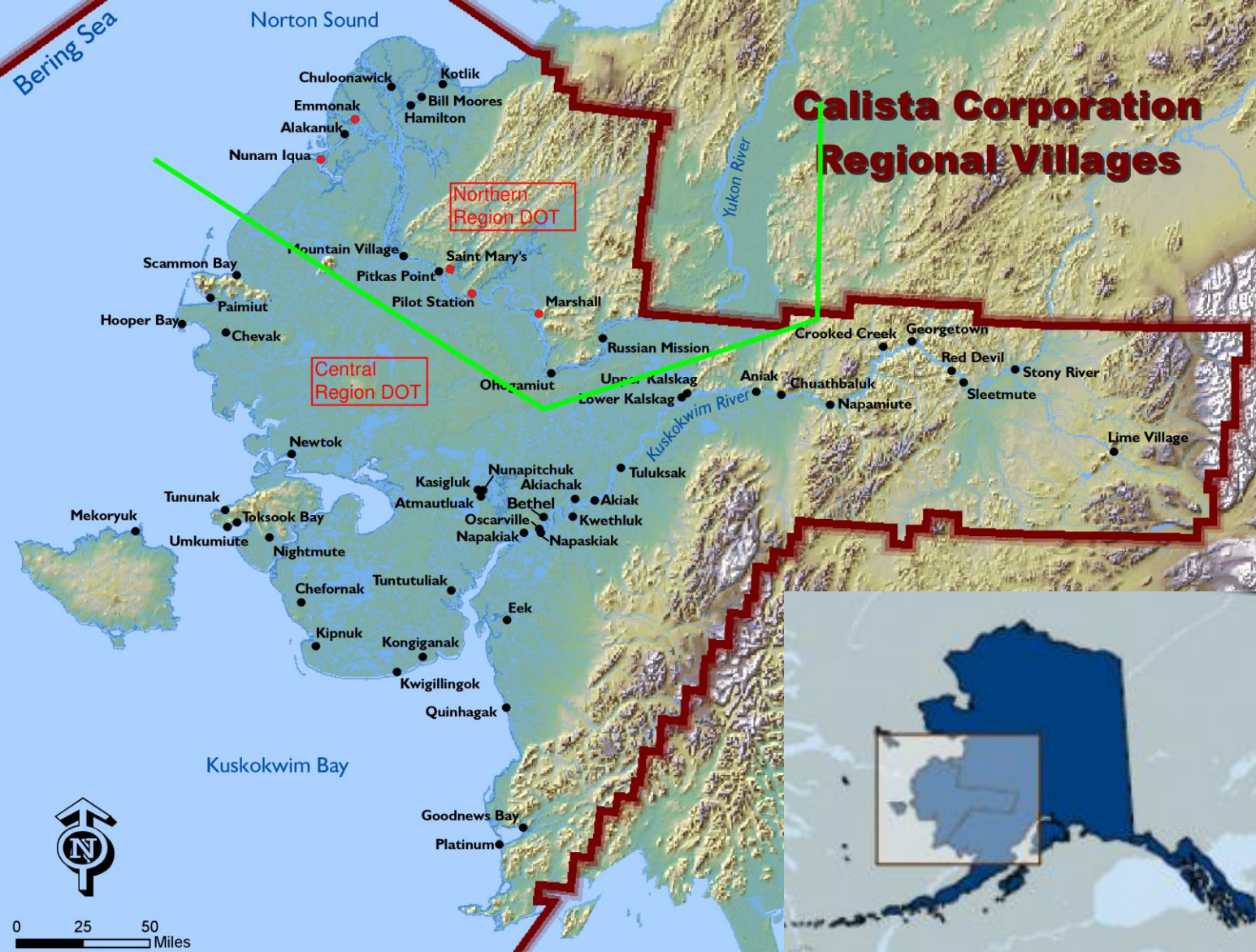


Pilcher Mountain at Marshall, AK



Barge docked at Emmonak, AK





57,000 sq. m. vs. IL 56,343 sq. m. #24 in US

Demographics	Calista Region	Alaska
Population	25,735	737,259
Median income	45,933	70,760
High school education	78.1%	91.6%
Bachelor's +	8.6%	27.5%
Persons below poverty	27.1%	9.9%
Persons under 18 years	39.1%	25.6%
Unemployment Rate	17.6%	6.3%

Source: US Census

January 2015	Y-K Delta	On-Road	Statewide
Heating Fuel	\$6.38	\$3.41	\$5.10
Gasoline	\$6.90	\$3.42	\$5.80

2012 Fish & Game	Households	Est. Harvest/lbs
Subsistence	Harvesting-Sharing	All Resources
Bethel Hub	85.1% - 70.1%	954,525



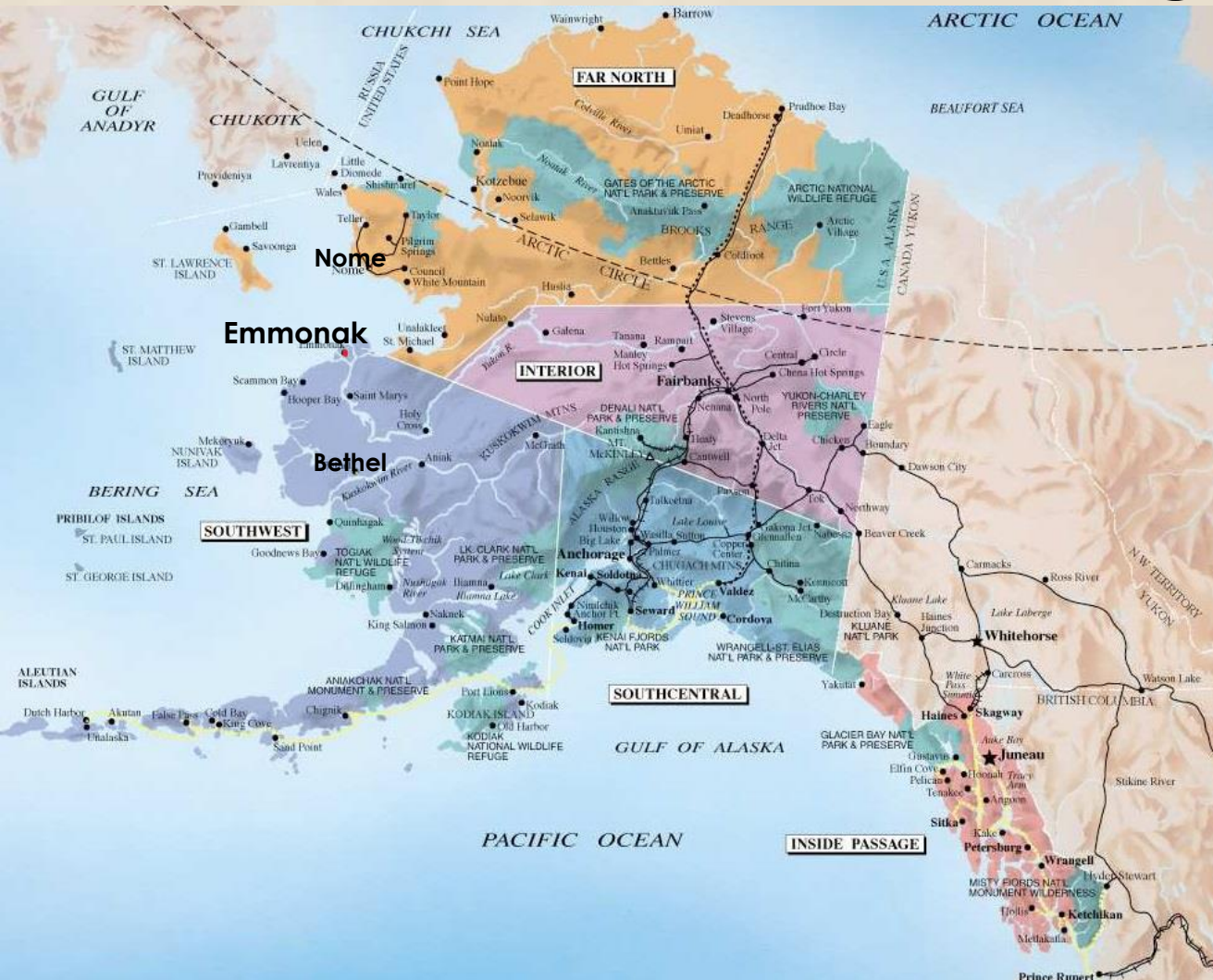
# Lower Yukon Region Port Needed

- No regional port in the 700 miles between Bethel & Nome
- Intermodal Linkage: with Nenana and Fairbanks rail/highway networks.

“The Yukon & Kuskokwim villages are often perceived as grouped together, but are entirely separate. Maritime infrastructure in Bethel does not serve the lower Yukon.”

Lower Yukon River Regional Port Project: Situational Analysis & Potential Impacts March 2014, DCCED

- **Region divided geographically/politically:** with representation from Nome, Bethel & Dillingham
- **Administratively:** Northern & Central Region DOT&PF
- Region can end up a “foster-child” on funded projects



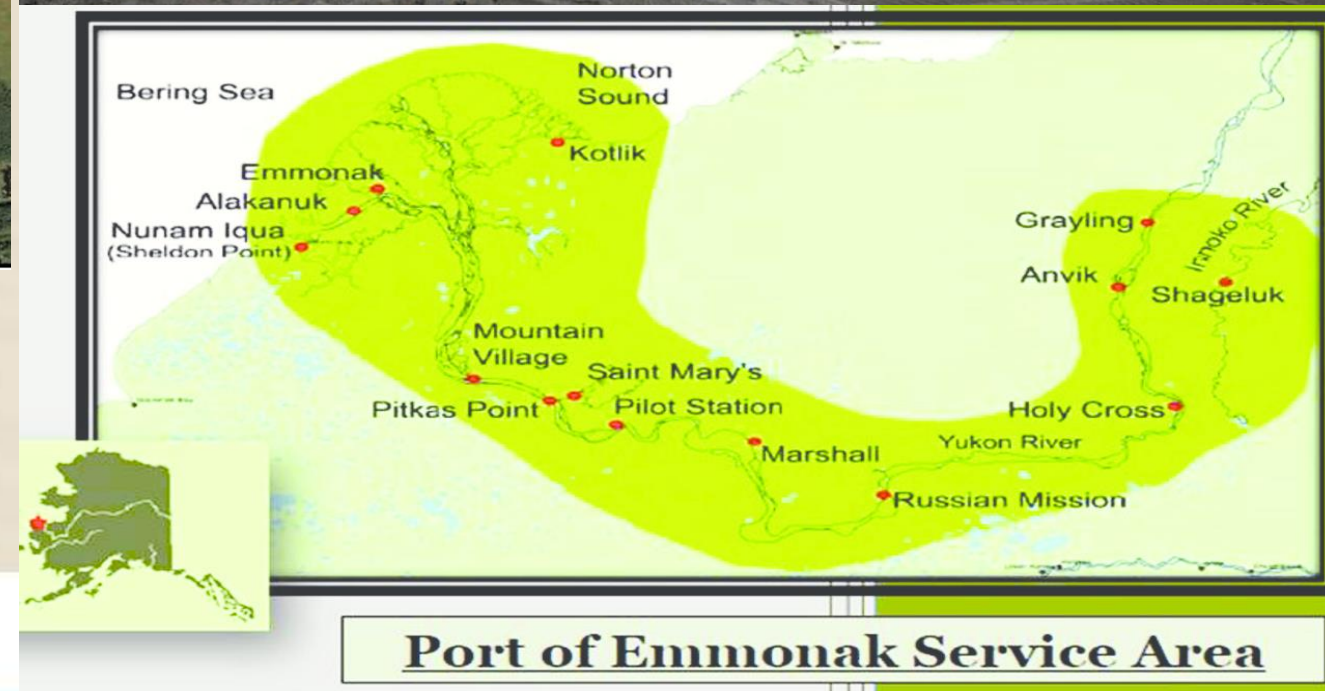
# Proposed 650' Dock vs. Existing Barge Landing



Overcrowding  
Erosion & Flooding  
Support Economic Diversity & Stability

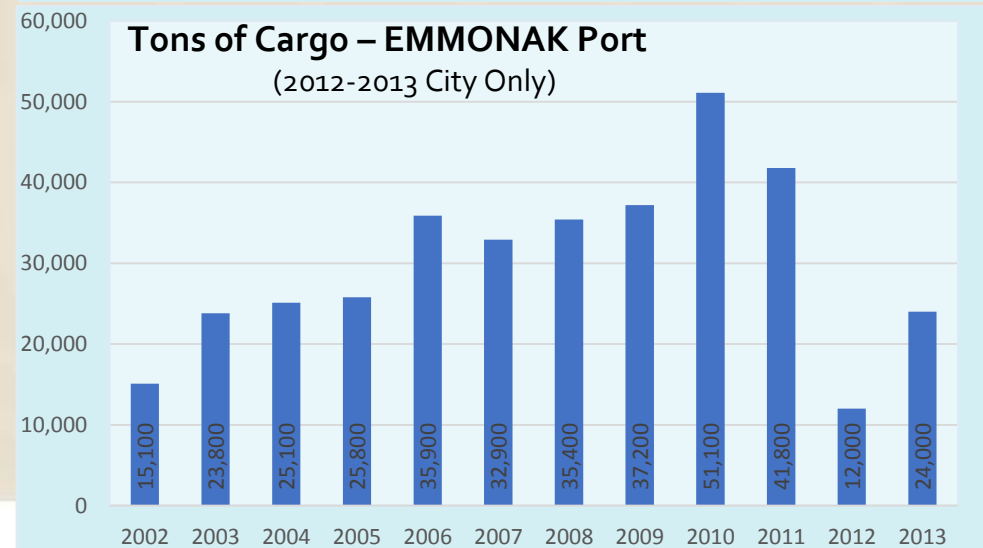
\$17.2 Million Total Cost – permitted & 'shovel ready'

2009 \$516,000 State Grant for port design  
FY13 \$3 M GO Bond delivers rock by Oct 2015  
from Nome, St. Mary's & Stebbins  
\$7.5 Million Request for Phase 1

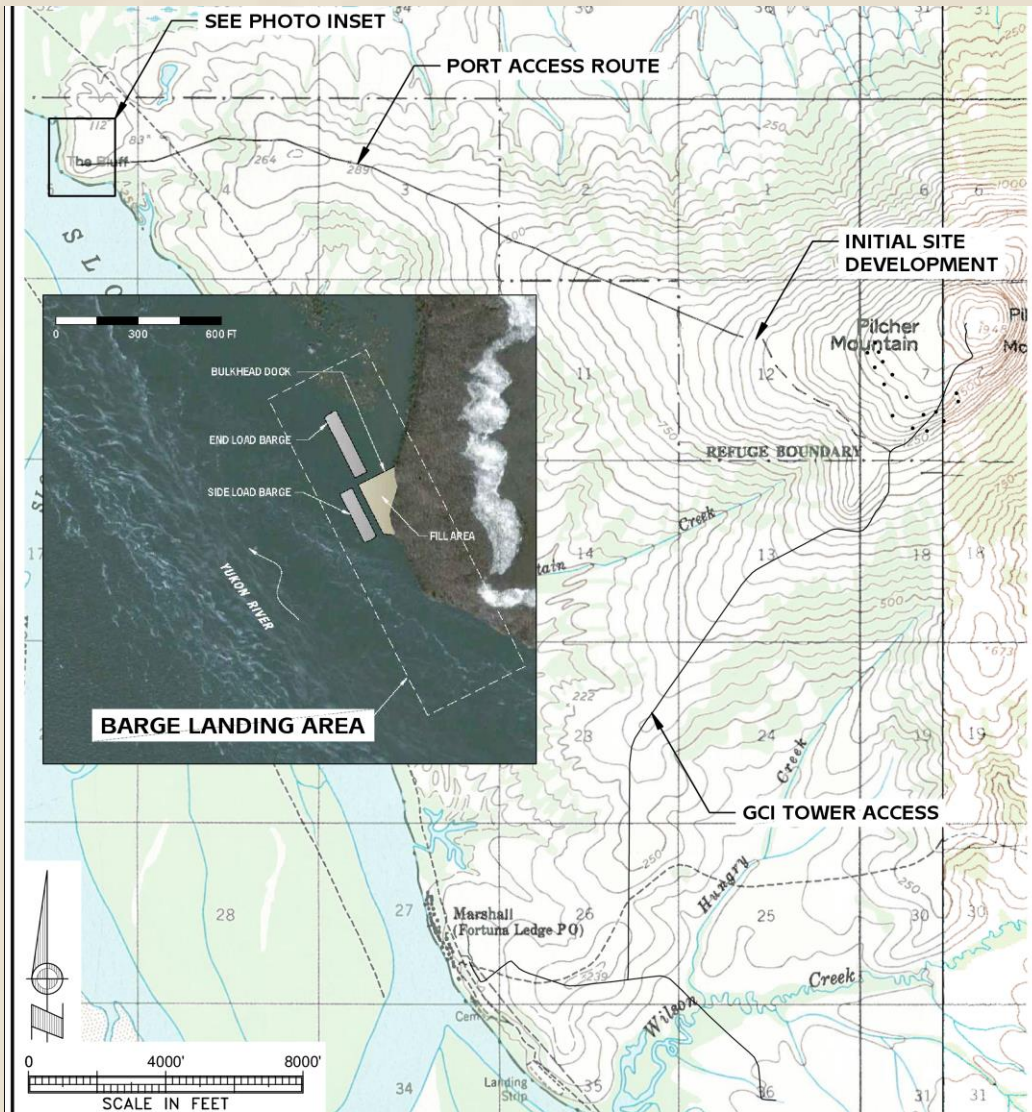


# Yukon Delta Fisheries Dev. Assn. Kwik'pak Fisheries, Yukon Marine Manufacturing

2002-2013 21.58 Million lbs. of salmon sold by 451 fishermen, valued at \$21M



# Marshall Dock & Quarry Road



"DOT is looking for material ...the rock... must be barged from Nome. Pilcher Mtn. is of great interest to us" Kevin Maxwell, DOT

\$1.4M Request: Road Design/Engineering/Permits

Project Estimate: \$12.45 Million – Projected Savings: \$20-24 M

**St. Mary's / Mt. Village 15 Mile Road Rehabilitation** –\$13M project

**Pilot Station Airport Relocation** – new airport & a 3 mile access road  
\$10M - \$20M construction Fall 2015.

**St. Mary's Airport Improvements** – \$10M-\$20M est. 2017 or 2018.

**Nunam Iqua Runway Extension** – with new access road \$2.5 M - \$5 M.

\*Source DOT Northern/Central Region March 2015.

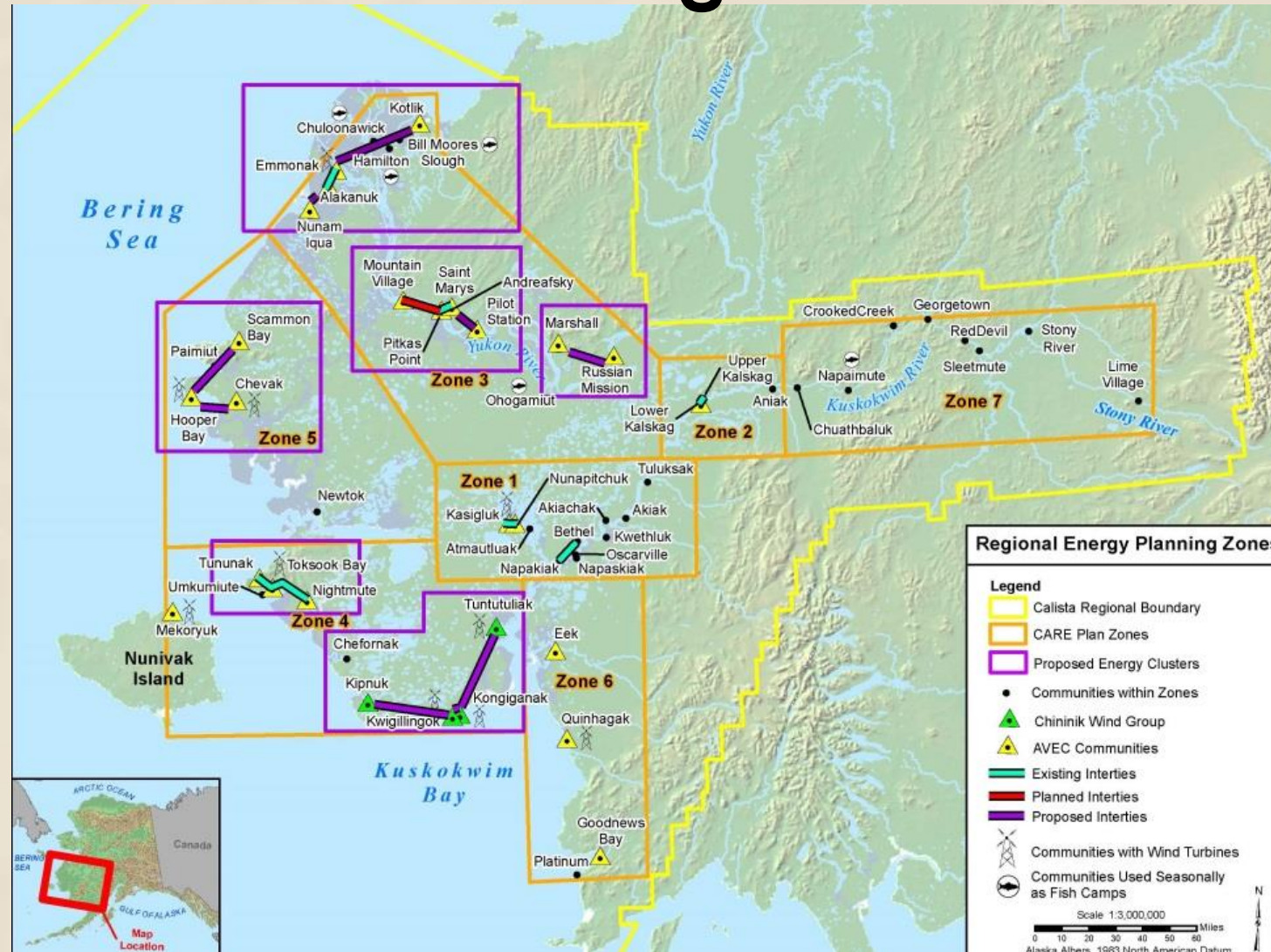


# Solution: Village Cluster Consolidated Services

## High Cost of Energy Threatens Sustainability

AVEC, Inc.	No PCE	PCE	Anchorage	Alaska
Cents/KwH	59.17	39.55	13.48	17.88

- Access:** commit to link villages by road
- Energy:** commit to transmission grids and alternative energy solutions
- Coordination:** of the shared public services, infrastructure, Maint. & Ops.
  - Power Plants
  - Chininik Wind Group
  - Schools-institute regional high schools
  - Airports
  - Sub-regional Clinics already implemented



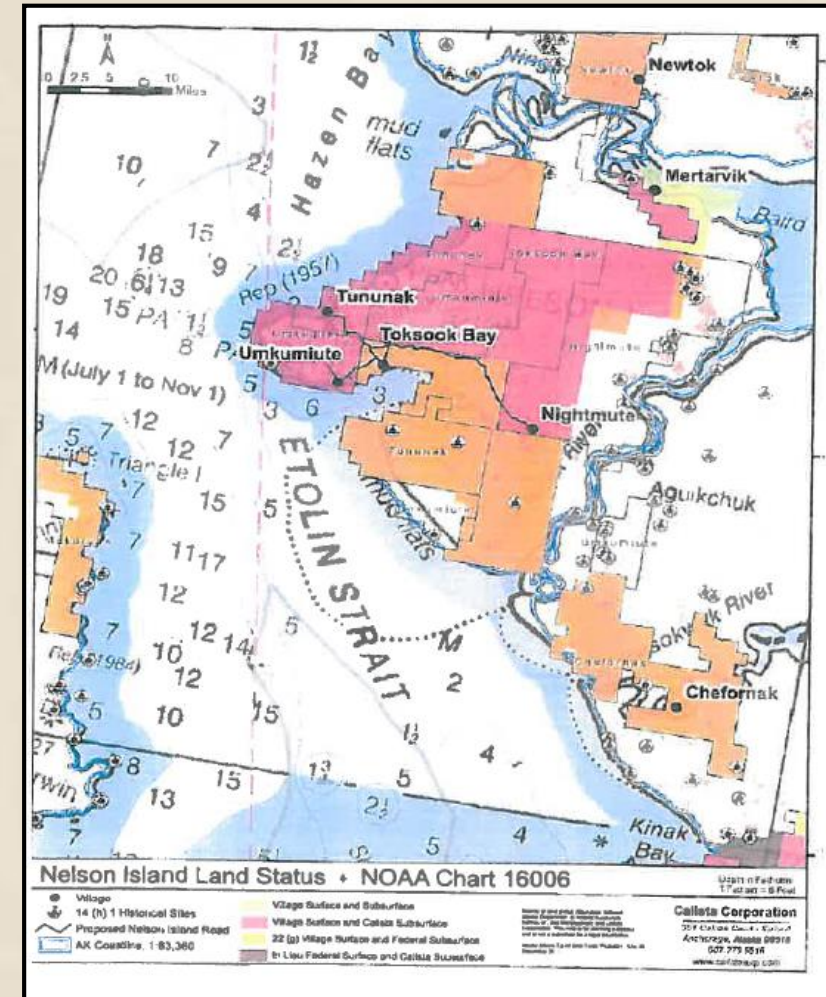
# Village Cluster Consolidated Services

## State Benefits:

- Reduce Duplication
- Economies of Scale
- Coordinated State Agency Master Plans
- Sharing of Resources
- Centralized, Better Schools
- Leverage Limited State Capital & Operating Funds

## Local Benefits:

- Linked Communities
- More Reliable Power
- Cheaper Energy and Transportation Costs
- Higher Quality Services
- Improved Education for Rural Students
- Improved emergency services and resources

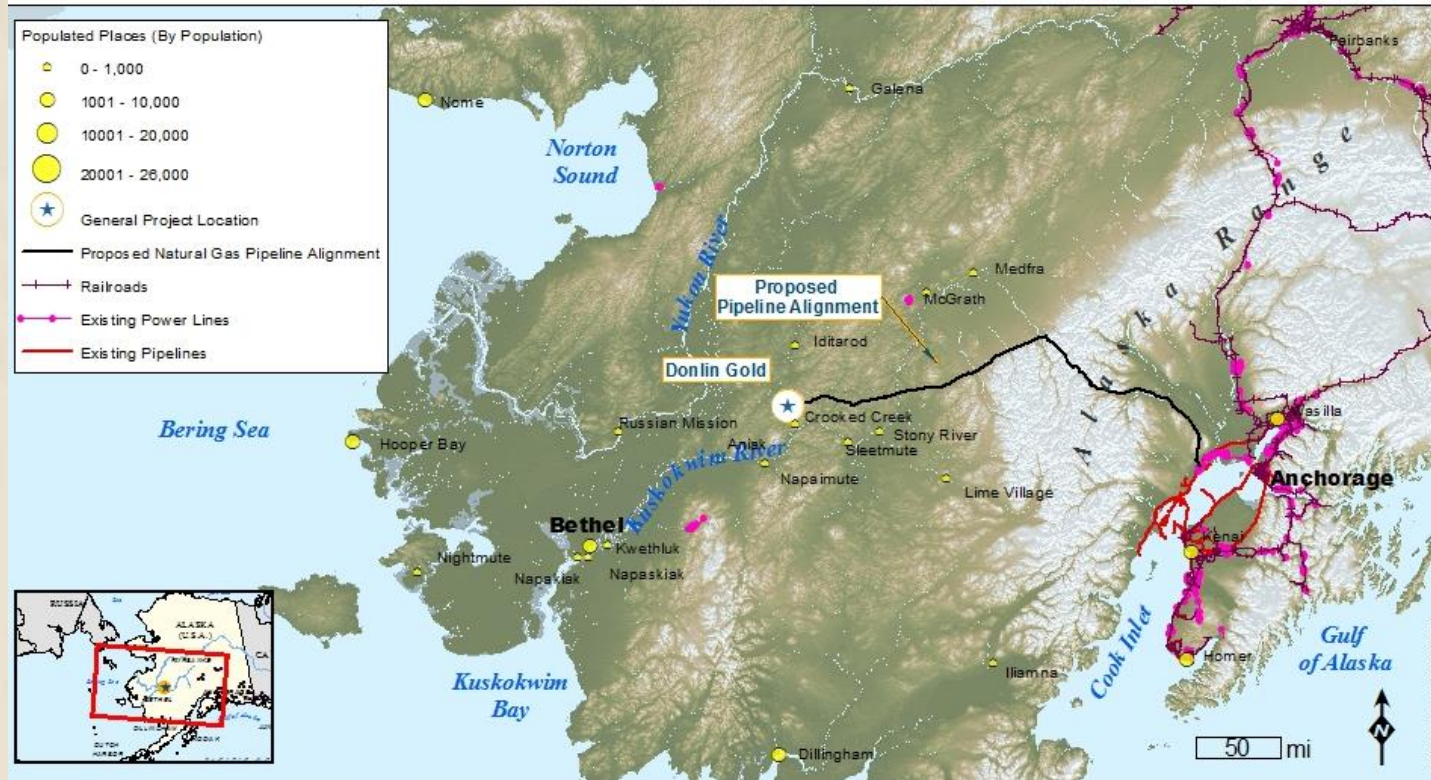


Toksook Bay Cluster Communities



# Donlin Creek Mine Affords Access to Energy

**\$1 Billion pipeline privately financed**



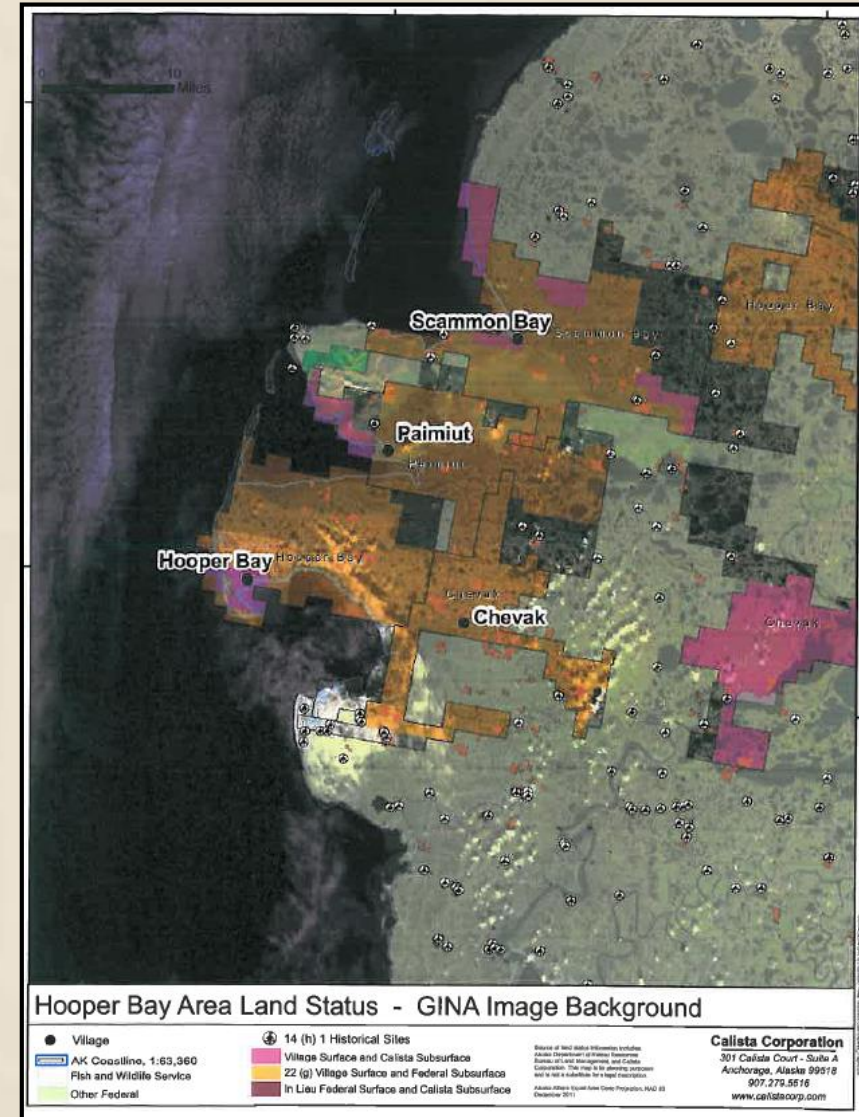
- Provides dependable power to mine
- 315 mile buried 14" natural gas pipeline with access capacity
- Affordable energy for the mine could also be a future supply chain for region
- Potential to expand into an energy grid for the planned cluster community electric interties



# Quyana - Thank You!

[www.facebook.com/CalistaCorp](http://www.facebook.com/CalistaCorp)

[www.CalistaCorp.com](http://www.CalistaCorp.com)



## Hooper Bay Cluster Communities

