

Northwestern Alaska Career and Technical Center

Report for:
Senate Education Committee
February 26, 2015



YOUR HORIZONS ARE LIMITLESS

NACTEC PROGRAM FOCUS

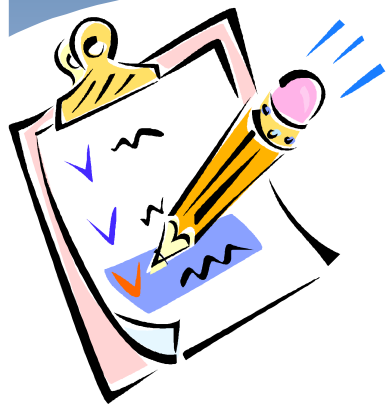
MISSION STATEMENT:

NACTEC WILL PREPARE STUDENTS FOR THE WORLD OF WORK BY ASSISTING IN THE DEVELOPMENT OF **LIFE SKILLS, WORK READINESS SKILLS, ACADEMIC SKILLS, AND CAREER AWARENESS.**

VISION STATEMENT:

OUR STUDENTS WILL **DEVELOP WORK ETHICS AND EMPLOYMENT SKILLS** TO BECOME **CAPABLE OF INDEPENDENT LIVING WHILE SUSTAINING A HEALTHY CULTURAL IDENTITY.**

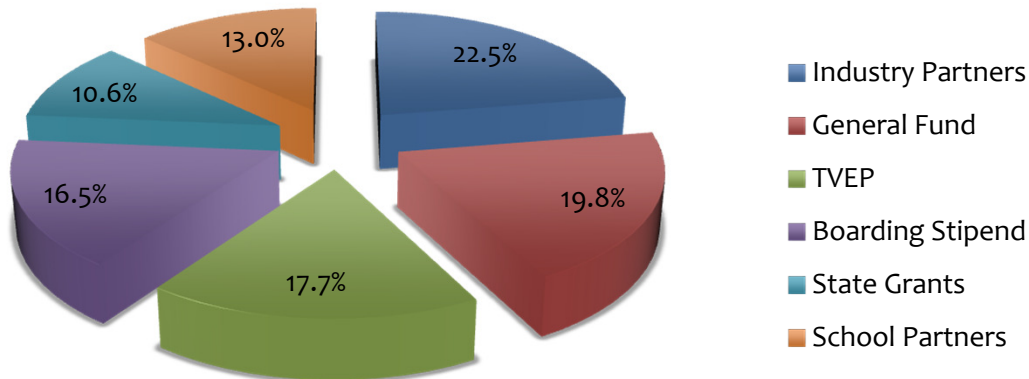
Training: AK Priority Industries



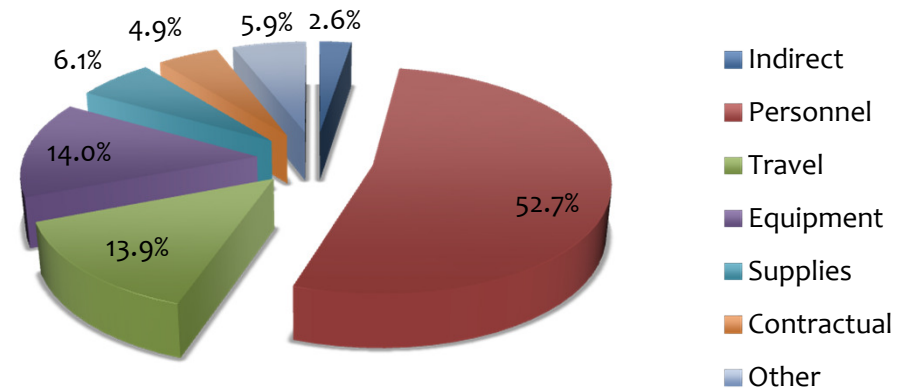
- * Health Care
- * Construction
- * Transportation
- * Seafood Harvesting & Processing
- * Hospitality and Tourism

NACTEC Funding

FY15 Budget (w/in-kind)



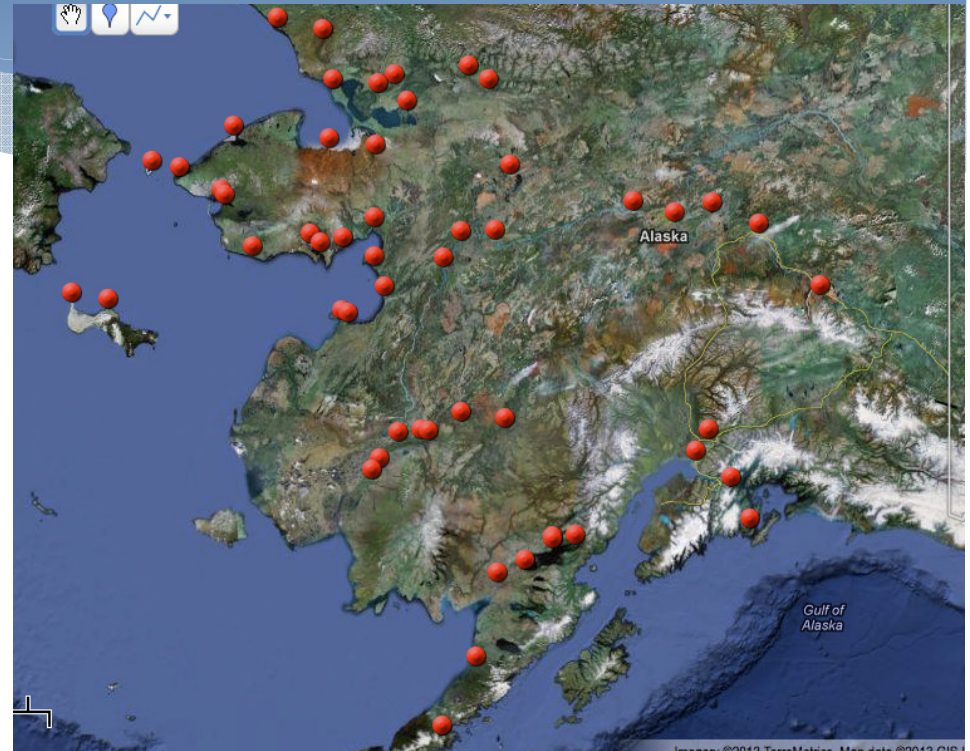
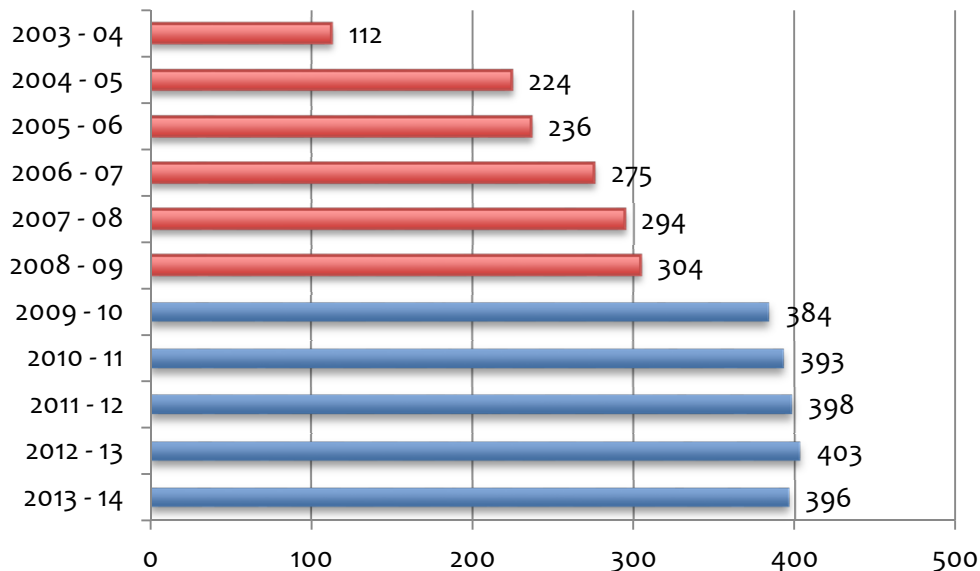
FY15 % of Budget/Category



\$1.74M FY15 Budget (+ 13% in-kind)
 54% = GF, TVEP, Boarding Stipend
 46% = Partners and Grants

Students Served at NACTEC:

- * 64% Enrollment Increase
 - * FY04-09 = 241/year (apply)
 - * FY10-14 = 395/year
 - * 26 Bed Dorm
 - * \$2,942/student (FY14)

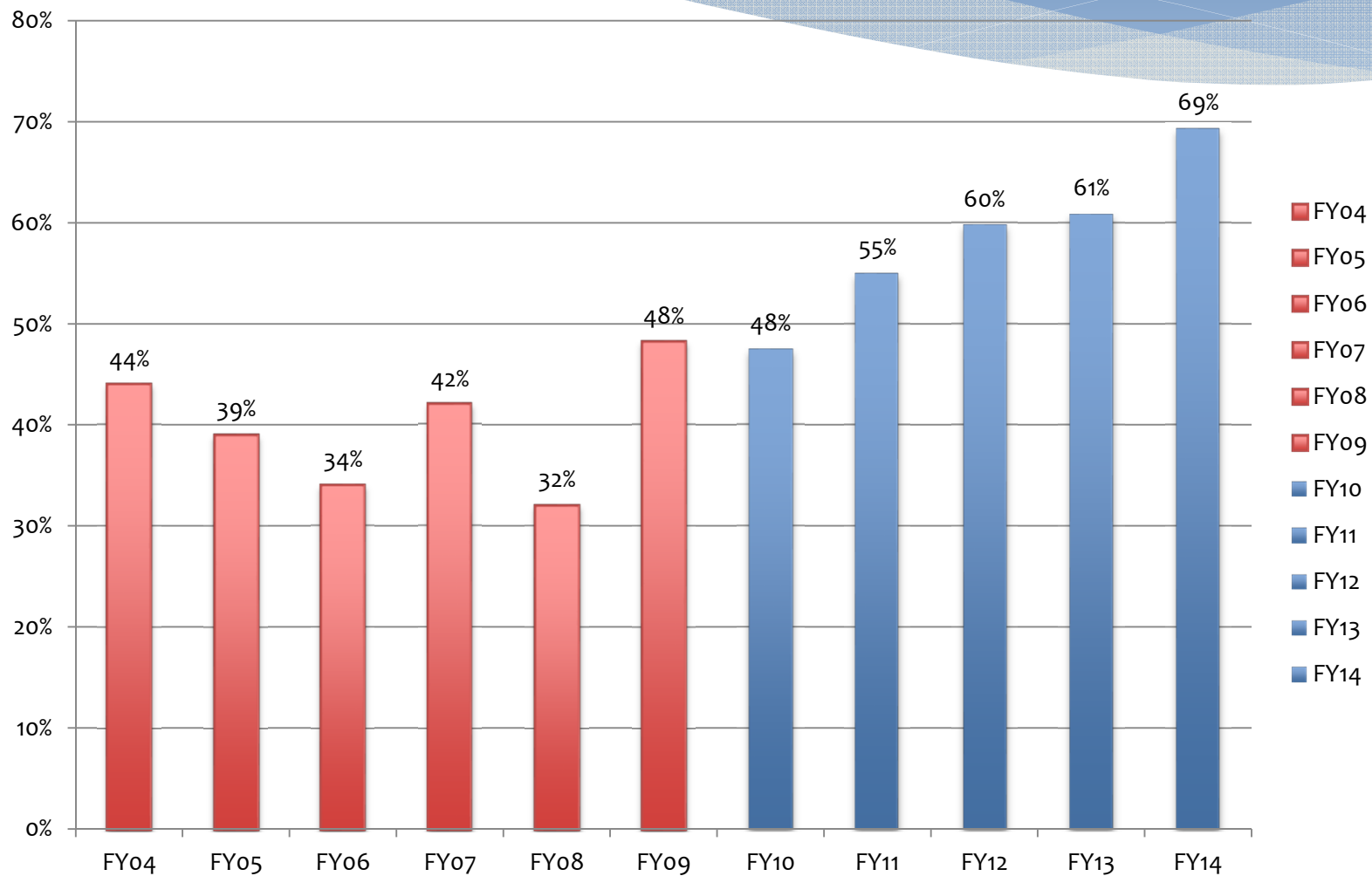


Over 3500 students since FY04
96% from BSSD & NPS
50+ Villages/10 Districts served
BSSD, NPS, Chugach, & Yupiit (FY15)

Impacts of NACTEC Programs:

Alaska CTE “Concentrators” = 28% higher graduation rates

BSSD Graduation Rate



Correlation: NACTEC Participation & BSSD Graduation Rate (3yr trends)

