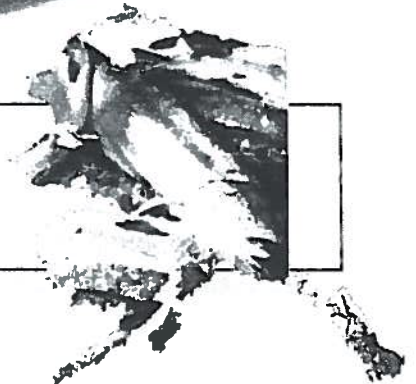


C F E C



**Commercial Fisheries
Entry Commission
2012 Annual Report**



Introduction

The commercial fishing industry is a crucial component of Alaska's economy and serves as the economic backbone of Alaska's coastal communities. The seafood industry is the state's largest private-sector employer. The Alaska Commercial Fisheries Entry Commission (CFEC or Commission) plays an essential management role in developing and sustaining Alaska's billion-dollar fishing industry.

The Limited Entry Act directs the Commission to promote the conservation and sustained-yield management of Alaska's fishery resources, and the economic health and stability of the fishing industry, by regulating entry into Alaskan commercial fisheries. To fulfill these responsibilities, the Commission is organized into five sections: Administration, Adjudications, Research & Planning (sometimes shortened to Research), Licensing, and Information Technology (IT) (see chart on page 8).

The Commission engages in the following activities as mandated by the Limited Entry Act (AS 16.43.010 *et seq.*):

- Establishing maximum numbers of entry permits for fisheries to be limited and administering applications and point systems to rank eligible applicants;
- Processing entry permit applications and adjudicating claims not resolved in the initial classification process;
- Issuing annual permits in limited and open-access fisheries, and issuing annual vessel licenses for all commercial vessels as required to legally participate in the state's commercial fisheries;
- Processing requests for emergency and permanent transfers of limited entry and interim-use permits and compiling data on all such transfers;
- Enforcing provisions of the Limited Entry Act including regulation of permit transfer activities;
- Participating in the research and development of comprehensive fisheries economic data;
- Working with other State and federal management agencies to develop, analyze, and coordinate fisheries policies;
- Assessing demerit points against, and when appropriate suspending the fishing privileges of, permit holders for convictions for violations of commercial fishing laws in the salmon fisheries.

The Commission has limited entry into 68 of Alaska's fisheries, continues to receive requests for the limitation of additional fisheries and works with fishermen and the Alaska Department of Fish & Game (ADF&G) to analyze these requests.

The percentage of limited entry permits held by Alaska residents continues to remain relatively stable. After 40 years, Alaskans hold about 77% of all limited entry permits. At the end of 2012, Alaskans held nearly 11,000 permanent limited entry permits, with rural Alaskans holding nearly two-thirds of that number.

For calendar year 2012, the Commission issued a combined total of 29,574 permanent permits, interim-use permits, and vessel licenses, and reviewed 1,972 permit transfer requests. In fiscal year 2012 (July 1, 2011 to June 30, 2012), the Commission collected approximately \$7.5 million in revenues for the State. The economic challenges facing the salmon industry have generated substantial discussion about potential cost efficiencies in the fisheries, including consideration of options for reducing fleet size. The Commission plays a direct role in fleet-reduction programs, and continues to participate in ongoing discussions with the public and policy makers, and provides data to assist and inform



the exploration of ideas for further fleet-reduction plans (see Decisions and Activities section for more information, page 4).

By working with other State and federal agencies, the Commission continues to help Alaska fishermen protect their fishing privileges. In addition to working with policy makers, agencies, fisheries organizations, and individual fishermen on the many pressing issues facing the fishing industry, the Commission continues to perform its primary functions of limiting fisheries, licensing fishermen and vessels, adjudicating claims, performing critical research, and providing data to governmental agencies, private organizations and the general public.

Major decisions and activities of the Commission in 2012 are outlined in this report. Prior years' activities, events, and decisions that affected the Commission's operations are highlighted in the appendices.

Alaska's fishing industry is vital to the state's economy and provides an important food source to the world. Alaskans must continue to ensure that our fisheries are developed wisely and sustained through sound management. We at the Commission are committed to fulfill our statutory role in achieving this goal.

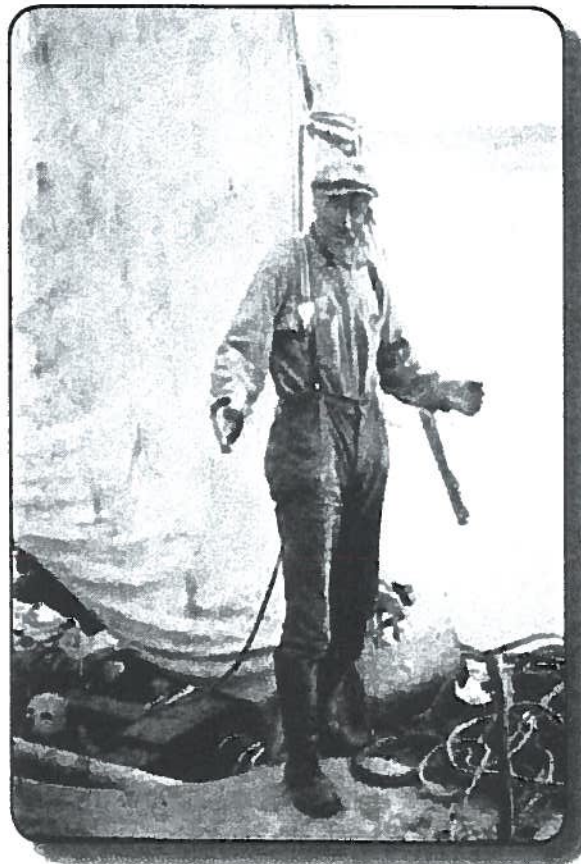


Photo courtesy of Susan Brown French From the collection of Dr Charles Black & family. Photo is circa 1917.