



BUILDING KNOWLEDGE TO  
IMPROVE SOCIAL POLICY

About MDRC / Methodology / Careers / News & Media / Contact Us / Newsletter ▾ / 

Solutions  
We're Working On

Questions  
We're Asking

Issues  
We Focus On

Populations  
We Work With

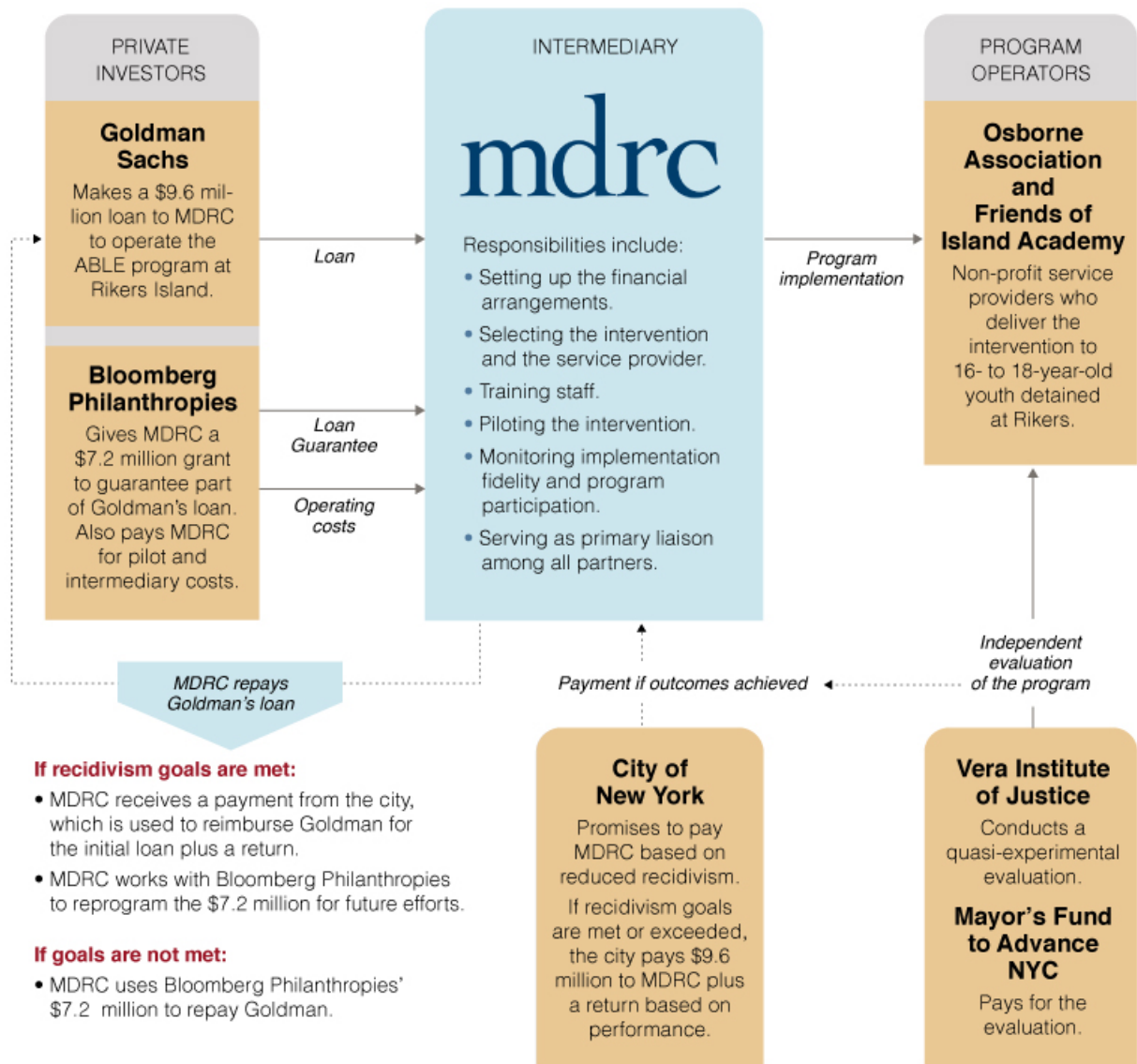
Publications

Projects

Key Partners in NYC's Social Impact Bond

A Social Impact Bond (SIB) encourages private investment in the scaling of evidence-based preventive services with the goal of spurring innovation and increasing accountability. Investors provide financing for federal, state, or locally-run programs with the potential to achieve savings for government budgets or returns for society at large, for example, a reduction in incarceration. If the program meets pre-established outcome goals, the government entity uses the savings to pay back investors with interest. An intermediary organization may put the pieces of a SIB together, making a match between the government and the investors and overseeing program operations. MDRC plays this role in the Adolescent Behavioral Learning Experience (ABLE), which is implementing a cognitive behavioral therapy program for youth detained at New York City's Rikers Island with the goal of reducing recidivism by at least 10 percent. A look at how the SIB is structured and the key partners:

<http://www.mdrc.org/key-partners-nycs-social-impact-bond>[4/1/2014 2:09:12 PM]



What We're Working On  
Questions We're Asking  
Issues We Focus On  
Populations We Work With  
Publications  
Projects



About MDRC  
Careers  
News & Media  
Contact Us  
Privacy Policy  
Site Map  
2014 MDRC®