



# Guide Concession Program: Commercial Guiding on State Lands

Department of Natural Resources

March 17, 2014

# What is a Guide Concession Program

- Area based allocation system for Big Game Guides
  - Land use/access only
  - Competitive selection process
  - Manage and distribute land use within Guide Concession Areas (GCA's)

# Guide Industry History

- In 1973 the Alaska Legislature created Guide License and Control Board
- In 1974 the Board established an area system limiting guides within Exclusive Guide Areas
- By 1976 the program was extended statewide
- In 1988 the Alaska Supreme Court found the Exclusive Guide Area system unconstitutional
- Since 1988 there has been no framework for the allocation of commercial use of state land by big game hunting guides

# Why Implement the GCP on State Lands

- Address the issues identified by the guide industry, the Big Game Commercial Services Board (BGCSB) and the Alaska Board of Game (BOG) related to the ongoing problems identified in the field.
  - Decreased incentive to practice wildlife conservation
  - Decreased quality of experience for guided clients
  - Conflicts between user groups
  - An overall lack of land stewardship
  - Difficulties enforcing game laws

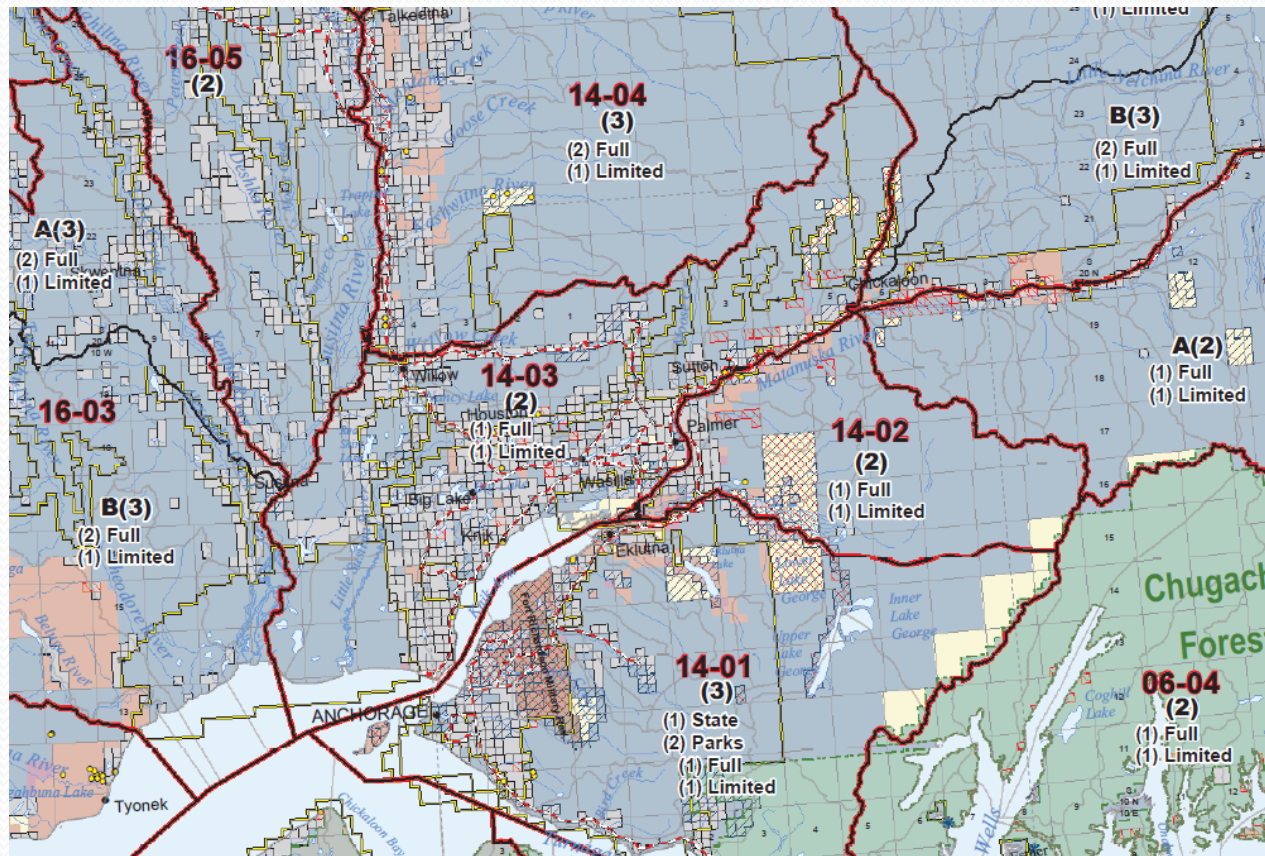
# GCP Design

- GCP application has minimum requirements and four sections
- All applications will be evaluated and scored by panels comprised of agency staff
- Concessions will be offered to the highest scoring applicants within each guide concession area
- Two types of Concessions – Full (208) and Limited (90)

# Aspects of the Program

- Application
- Scoring process and evaluation panel
- Fees (application, annual and per client)
- Full and limited guide concessions
- Limit on the number of assistant guides
- Apply for and be awarded a maximum number of areas
- Maps
- Duration of the permit
- Transferability and vacancies

# GCA Map Close-up





# Historical Information

Issue	2009 White Paper	2012 Proposed Decision	2013 Framework Doc
# of Applications	3	2	3
# of Concessions Awarded	2	2	3
Application Fee	\$250	\$250	\$250
Per client Fee	\$200	\$500/\$750	\$250/\$500 AK resident exempt
Annual Fee (Full)	Flat fee and bid	\$4000	\$2000
Annual Fee (Limited)	n/a	\$2000	\$1000
Assistant Guides (Full)	Set by operations plan	3 per concession	6 per concession
Assistant Guides (Limited)	0	1 per concession	1 per concession
Clients (Full)	No limit on clients	No limit on clients	No limit on clients
Clients (Limited)	6 – 8 annually	No limit on clients	4 annually, per GCA
Transferability	Not transferable	Not transferable	Not transferable
Transporters	Not included in program	Not included in program	Not included in program
Concession Term	5 yr term with 5 yr reissue	5 yr term with 5 yr evaluation and reissue	5 yr term with 5yr evaluation and reissue
# of Full Concessions	244	215	208
# of Limited Concessions	0	85	90





# Where we are today

- Management Framework Document – January 2013
- Collected/reviewed comments and input
- Draft –Final documents created
- No staff currently working on the project

# Current and Requested Statute Authority

## **Current Authority**

- AS 38.05.020 –Duties of the Commissioner
- AS 38.05.035 – Power and duties of the Director
- AS 38.05.850 – Permits

## **Requested Authority**

- Limited enforcement authority
- Program receipt authority
- Confidentiality

# Timeline – if approved for July, 2014

- April 2014 – Legislature approves FY15 budget
- Fall 2014 – Recruit and hire staff
- Spring-fall 2015 – Regulations development
- Winter 2015 – GCP Development completed
- January 1, 2016 – Applications available
- April 1, 2016 – Deadline for applications to be submitted to DNR
- April-July, 2016 – Scoring of applications
- August-September 2016 – Notification of areas, permit sent for review and signature, payment
- January 1, 2017 – Guide concession areas effective on the ground

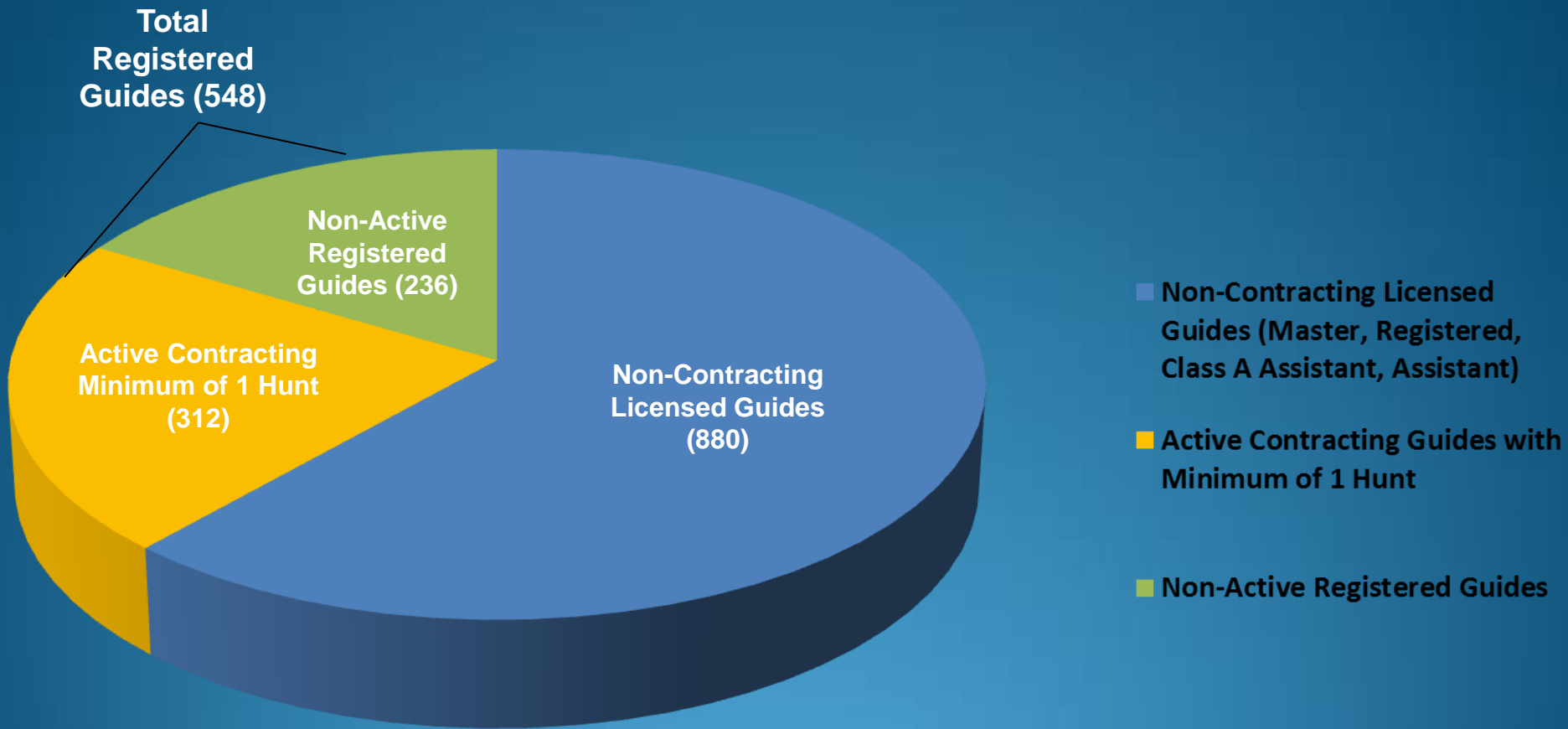
# Additional Information

website: <http://dnr.alaska.gov/mlw/gcp/>

Questions?

- 
- Extra slides if needed

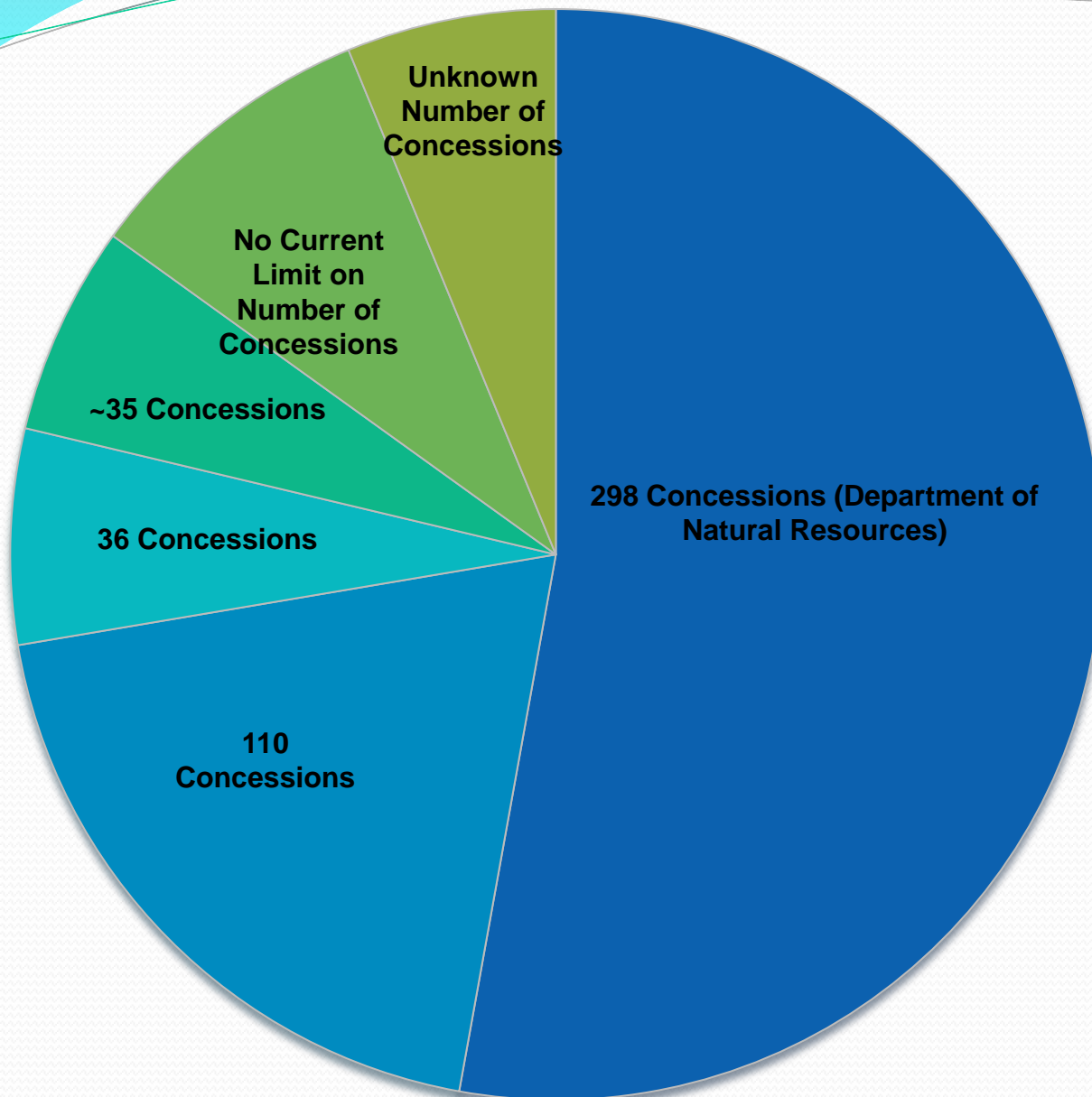
## 2011 Guide License by Class as of 2/11/13



**Total Licensed Guides in Alaska:  
1428**

\*Data from Occupational Licensing, Big Game Commercial Services Board, and Alaska Department of Commerce, Community, and Economic Development. The Division of Mining, Land and Water reserves the right to waive technical defects in this publication.

# Guide Concession Area Opportunities in Alaska



- Department of Natural Resources (89.8 million acres)
- U.S. Fish & Wildlife Service (78.8 million acres)
- National Park Service (52.4 million acres)
- U.S. Forest Service (22.3 million acres)
- Bureau of Land Management (82.5 million acres)
- Private Ownership (45.2 million acres)



# GCP Public Involvement

- Whitepaper distributed in 2009
  - 113 day comment period; 277 comments received
- Proposed Decision released February 15, 2012
  - 68 day comment period; 190 comments received
- Framework Management Document released January 23, 2013
  - 37 day comment period; 77 comments received