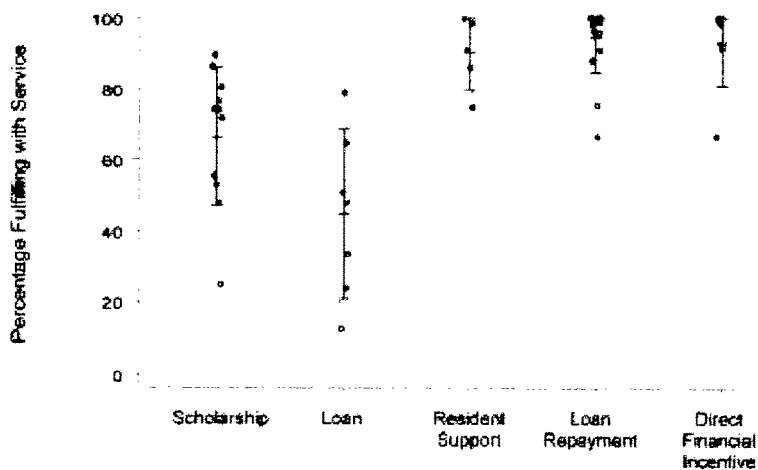


From: Pathman DE, Konrad TR, King TS, Taylor DH, Koch GG. Outcomes of states' scholarship, loan repayment, and related programs for physicians. *Medical Care*. 2004;42:560-568.

FIGURE 1. Percentage of recent physicians in each program (%) who fulfilled their obligations with service, grouped by program type.



Bars denote group means \pm standard deviations

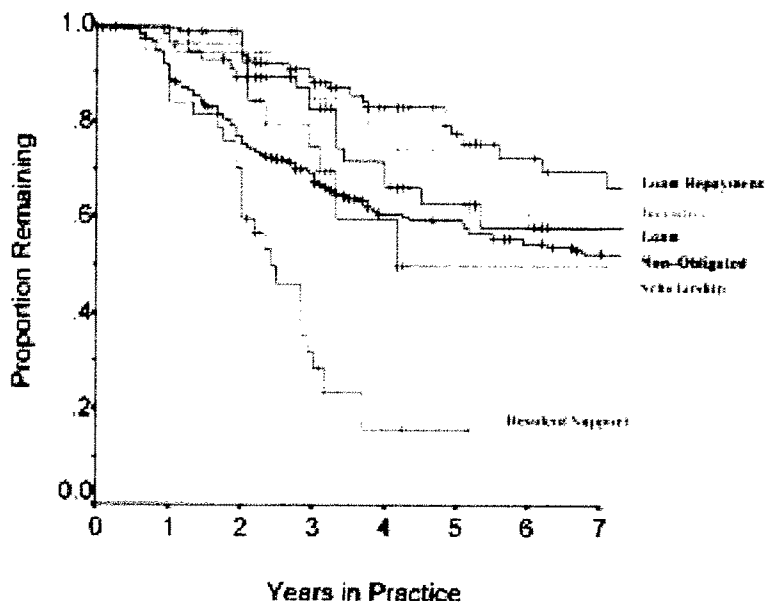


FIGURE 3. Retention of obligated physicians within their service practices: Kaplan-Meier estimations by type of program and compared with nonobligated physicians