

# ***Combined Headquarters***

---



## **Command Overview**

**For**

**Joint Armed Services Committee**

***COL Cory Mendenhall***

**22 Mar 18**

The Overall Classification of this Briefing is: **UNCLASSIFIED**



# Overview

---

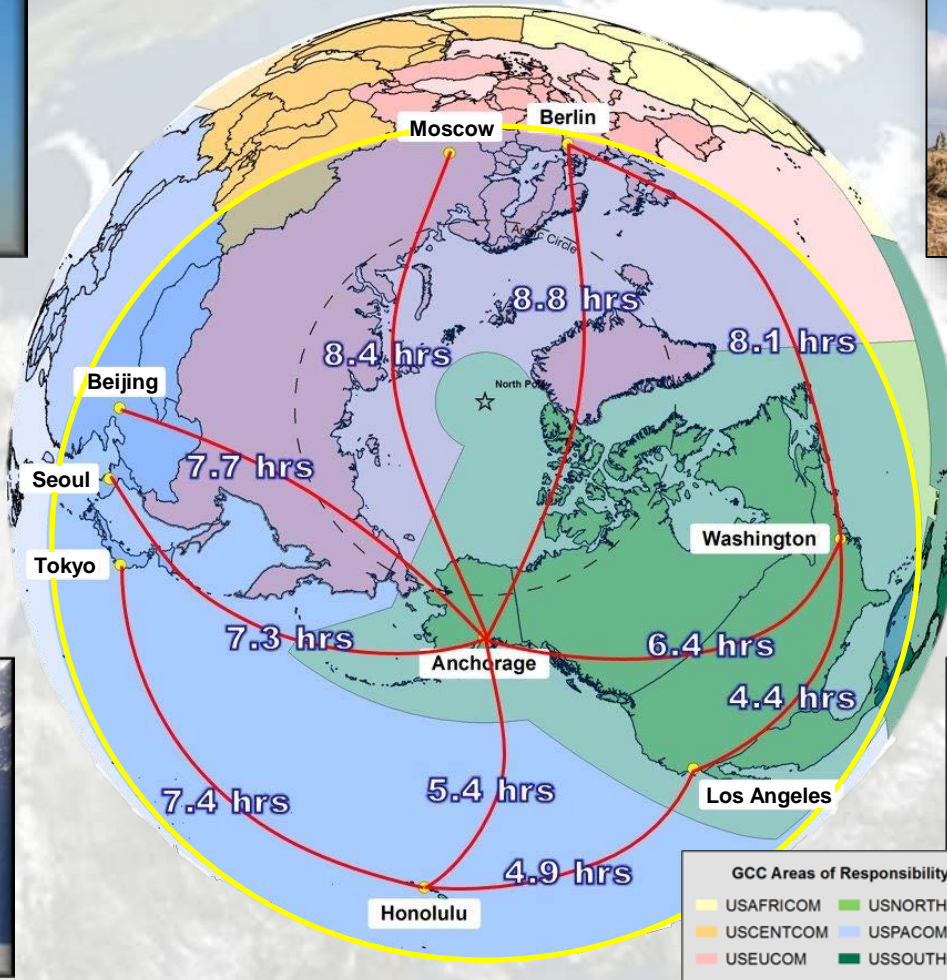
- **Where We Are Today**
- **Year in Review**
- **A Look to the Future**
- **Take Away**





# Alaska's Strategic Importance

**4,000 NM Radius from  
Joint Base Elmendorf-Richardson, Anchorage, Alaska**  
Approximate Range of USAF Aircraft flying 450 knots (.75 Mach) for 9 hrs

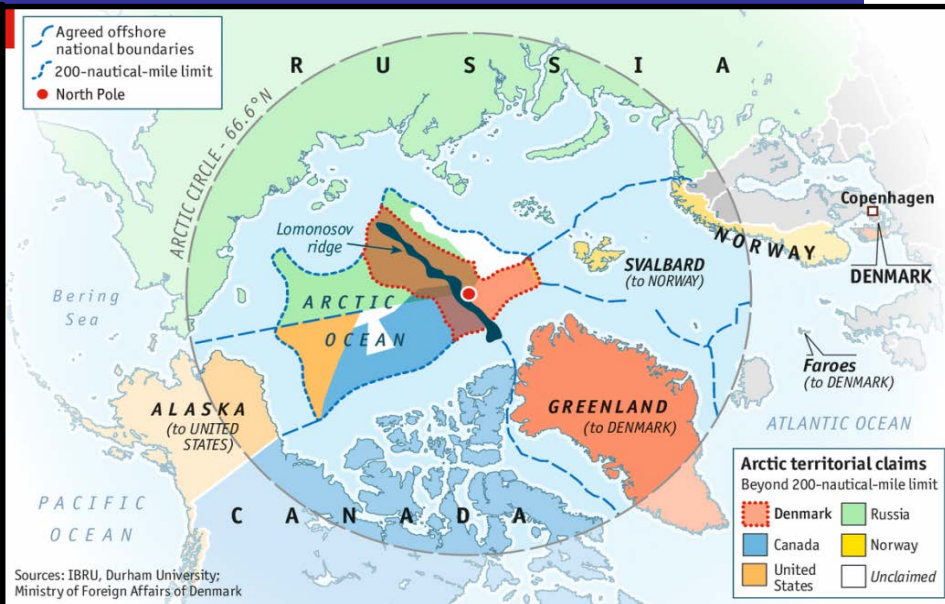


“Alaska is the most strategic place on earth” – BG William "Billy" Mitchell, Testimony to Congress 1935 <sub>3</sub>

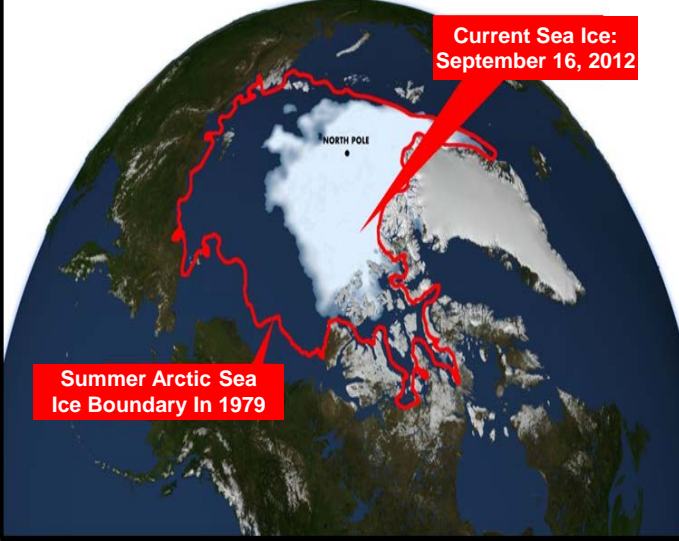




# Understanding the Arctic



Receding Arctic Sea Ice, 1979-2012



## Arctic Evolution

- Decrease in seasonal sea ice
  - Increase in human activity
  - Access to natural resources
  - Proximity to national interests
  - Russian trends & sovereignty implications
- ....Arctic understanding is a global challenge

Russian Claimed Territory & Arctic Bases





# Military Footprint

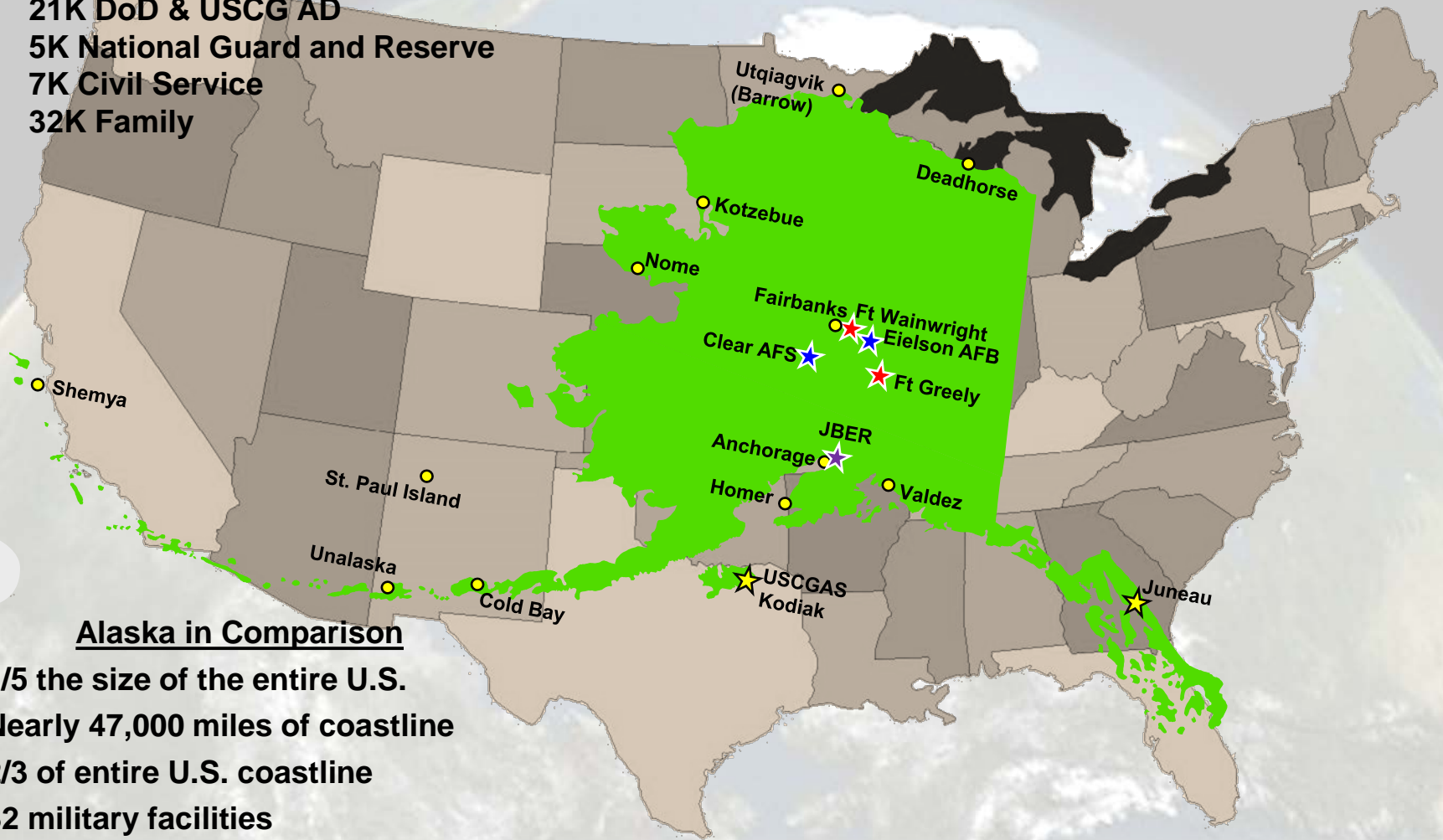
## 65,000 Direct Military Influence

21K DoD & USCG AD

5K National Guard and Reserve

7K Civil Service

32K Family



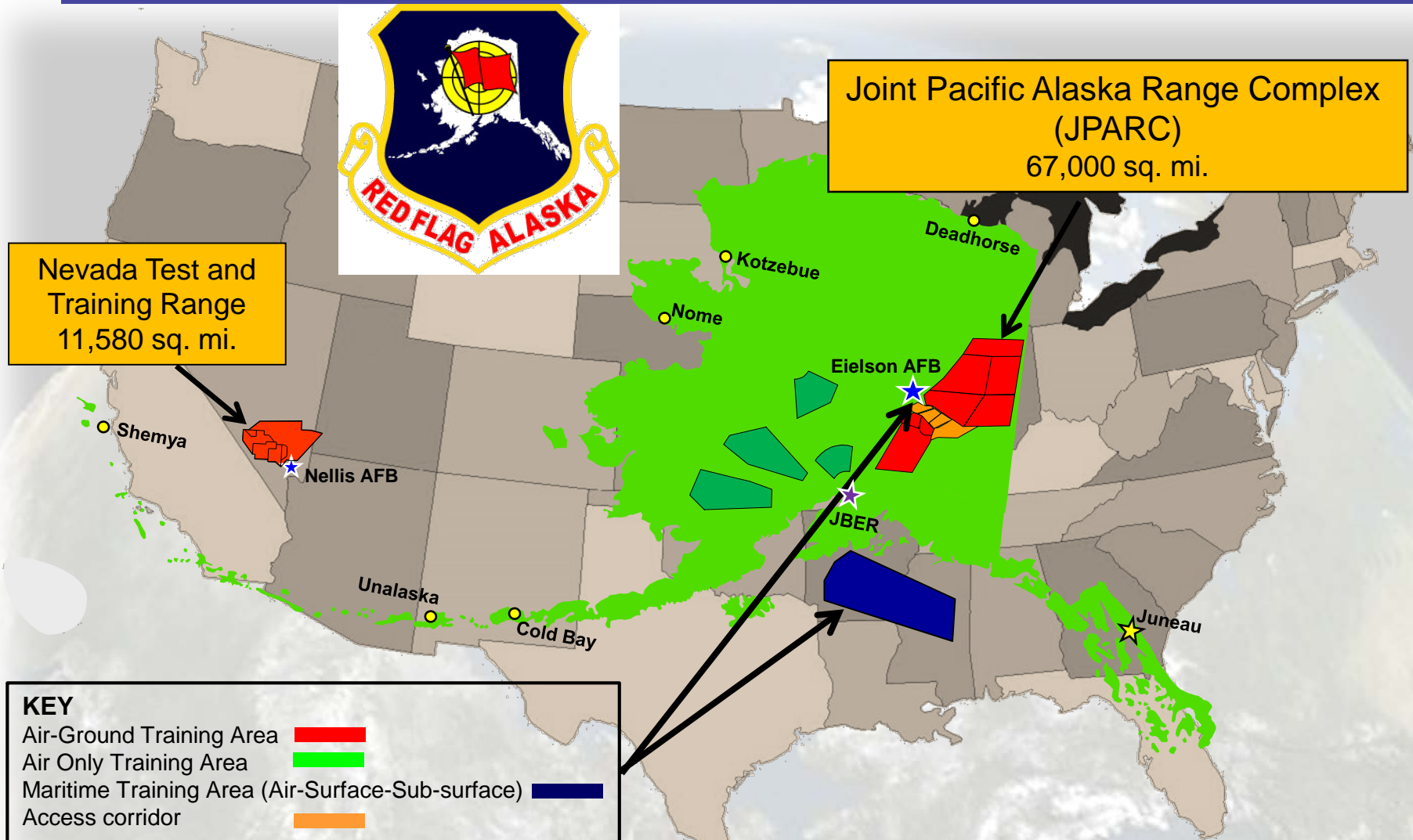
### Alaska in Comparison

- 1/5 the size of the entire U.S.
- Nearly 47,000 miles of coastline
- 2/3 of entire U.S. coastline
- 32 military facilities
- 12 major military bases/stations





# Valuable Training Resource





# Key Military Exercises

- **VIGILANT SHIELD (NORAD and USNORTHCOM)**

- Annual homeland defense exercise



- **ARCTIC EDGE (USNORTHCOM)**

- Biennial Homeland Defense and/or Defense Support to Civil Authorities exercise linked with joint/interagency/State Arctic exercises



- **RED FLAG-Alaska (USAF)**

- 3 to 4 events per year featuring joint and coalition/international partners
- 14 nations participated in CY17



- **NORTHERN EDGE (USPACOM)**

- Biennial exercise, joint air/land/sea (Gulf of Alaska), 6,000+ participants



# Operations and Events

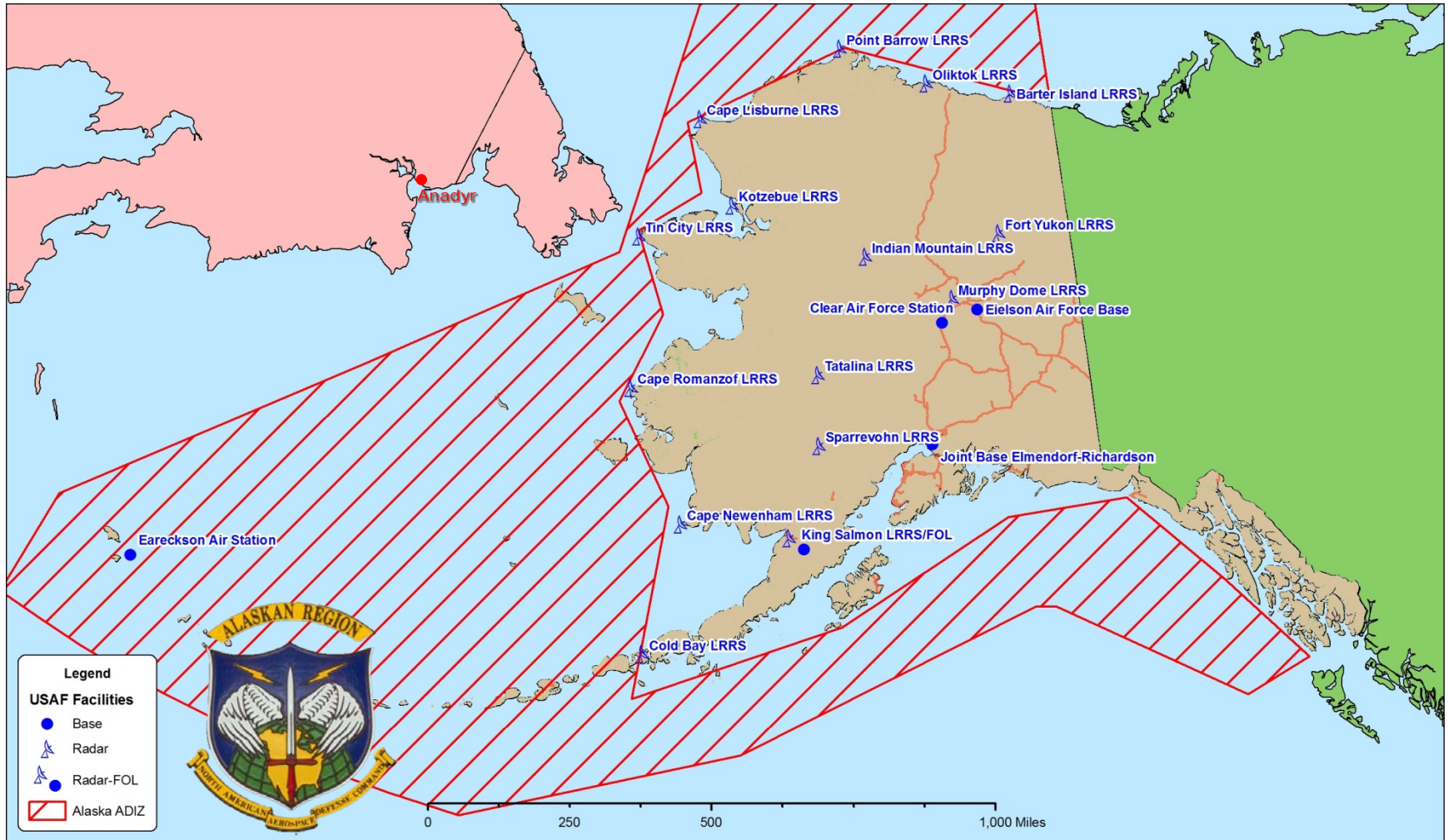
- **USAF Arctic Security Expedition**
  - Improving operational capabilities
  - Support domain awareness, comm, infrastructure, and sustainable presence in the Arctic
- **Arctic Maritime Symposium**
  - Awareness of Arctic maritime challenges
- **Operation Colony Glacier**
  - Annual joint operation
  - Coordinated recovery of remains and debris from 1952 crash of C-124
- **Rescue Coordination Center**
  - 22 Saves
- **NORAD Alert Mission**
  - 24/7 x 365 Fighter Response Capability
  - 24/7 x 365 Aerospace Warning/Control







# Alaskan NORAD Region



**The Alaskan NORAD Region conducts aerospace warning, aerospace control, and maritime warning in the defense of North America.**



# FY18 MILCON

- **Fort Greely**
  - Missile Defense Field #4 - **\$200M**
  - Additional 20 Ground Based Interceptors
- **Eielson AFB**
  - F-35 Bed down - **\$169M in FY '18**
  - 54 Aircraft Arrive in Spring 2020 - 2022
  - Personnel – All Additive
    - 1245+ military / 65-80 Contractors
    - + Dependents
    - Total = ~3500 personnel
  - Will make AK only location worldwide with over **100 5<sup>th</sup> Generation fighters (F-22/F-35)**



## **FY 17 Totals:**

- \$298M in new & renovated bldgs
- 11 bldgs built or renovated

## **FY 18 Totals:**

- \$169M in new & renovated bldgs
- 19 bldgs built or renovated

## **FY 19+ Totals:**

- \$45M in new & renovated bldgs
- 2 bldgs built or renovated

**\$563M Invested in Alaska in FY17 – Over \$120M more than any other U.S. state**

**\$369M Invested in Alaska in FY18**



# Take Away

## Defense of the Homeland and our citizens is our #1 Priority

- Our Forces are ready to deploy and fight in response to any regional threat
- Alaskan Command, in coordination with local civil authorities and interagency partners, continues to support and stands ready to assist when required.
- The strategic significance of Alaska to our Nation will continue to grow as the Arctic evolves.
- Alaskan support to our military service members and families is second to none.







# Thank You for Your Support

