



## Joint House Education and Health and Social Services Committees

March 16, 2018

**Anji Gallanos**  
Early Learning Administrator  
Department of Education and Early Development

# Early Care & Learning FY17 Report

ALASKA DEPARTMENT OF EDUCATION AND EARLY EDUCATION



# AECCC

## Alaska Early Childhood Coordinating Council



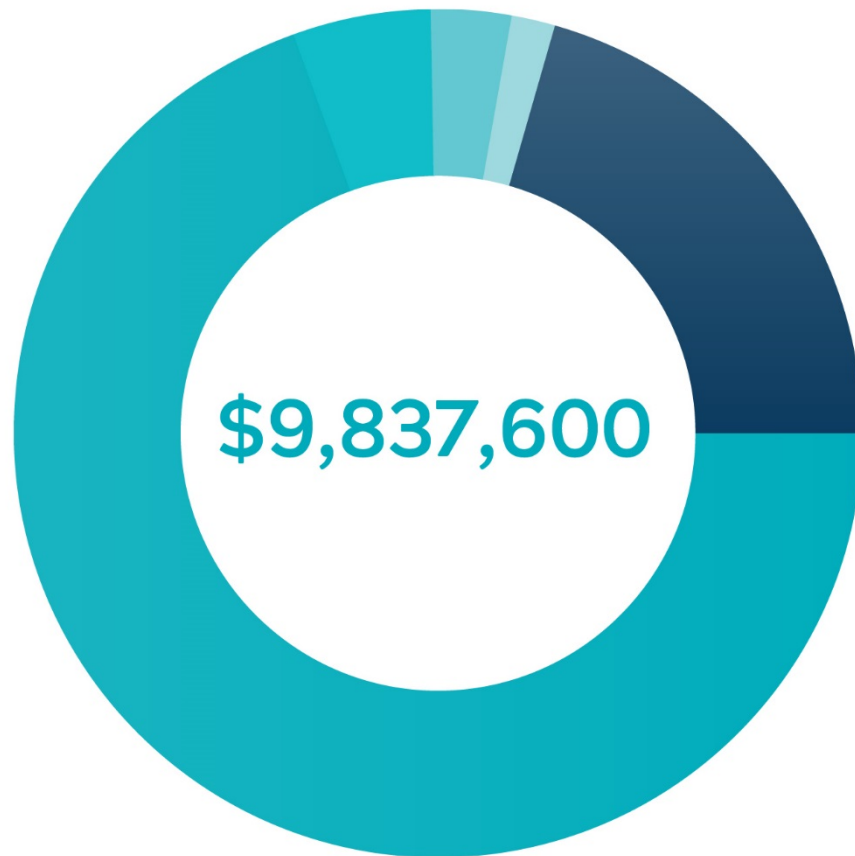
## ► OVERVIEW OF DEED EARLY LEARNING PROGRAMS

DEED Funding Allocation	Parents as Teachers
Pre-Elementary	thread
Head Start	
Best Beginnings	





## ALLOCATION OF DEED SPENDING FY 17



Distribution of DEED funding to Alaska  
Early Care & Learning Programs

### Early Learning Coordination

- **\$6,857,700** Head Start
- **\$500,000** Parents as Teachers
- **\$320,000** Best Beginnings
- **\$159,900** thread

### Pre-Elementary Grants

- **\$2,000,000** Pre-Elementary



## PRE-ELEMENTARY



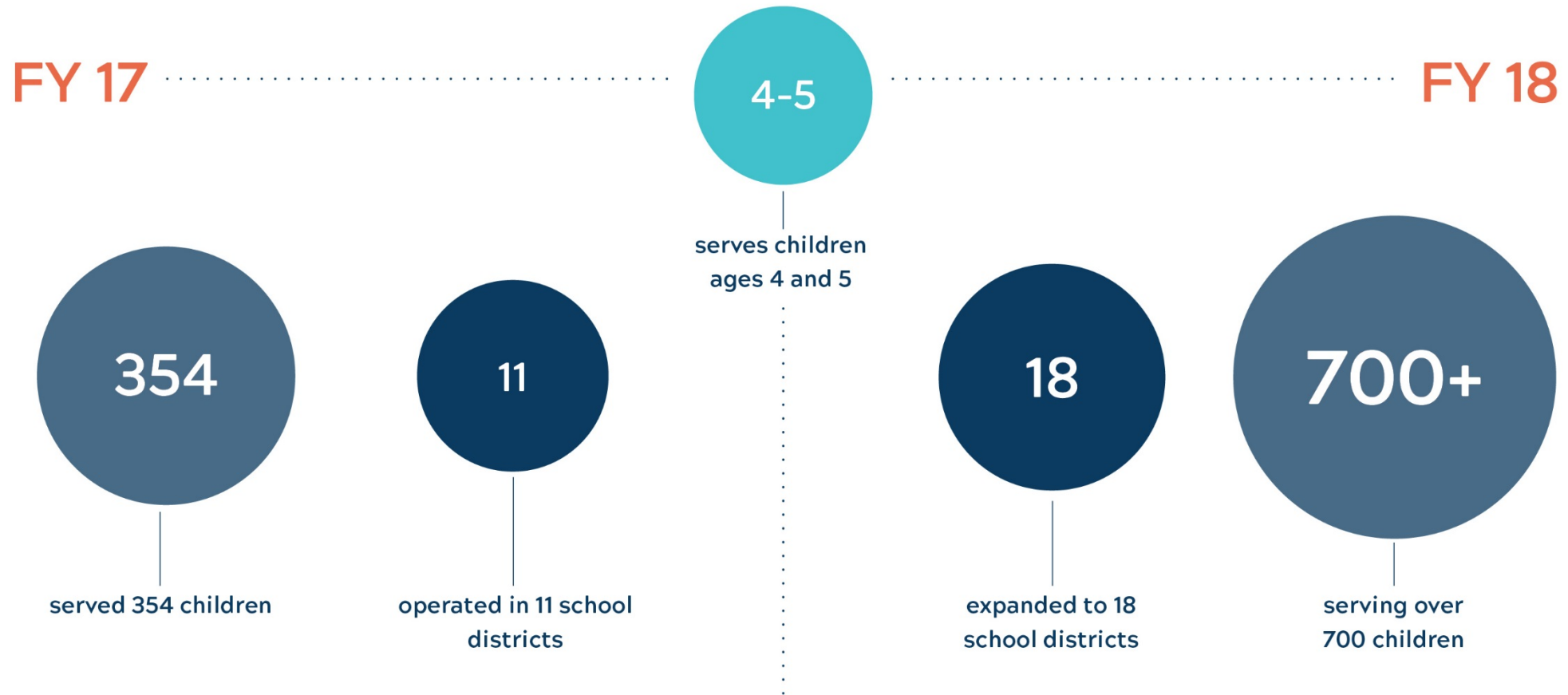
### Definition of Pre-Elementary and School Readiness

Alaska Statute AS 14.07.020 defines pre-elementary as school for children ages three through five years if the school's primary function is educational.

DEED programs are consistently working towards helping young children become "school ready." School readiness describes both the preparedness of a child and their family to engage in and benefit from learning experiences. In order to best prepare young children for school, families and community service providers must work collectively to ensure that every child is ready for higher engagement in learning

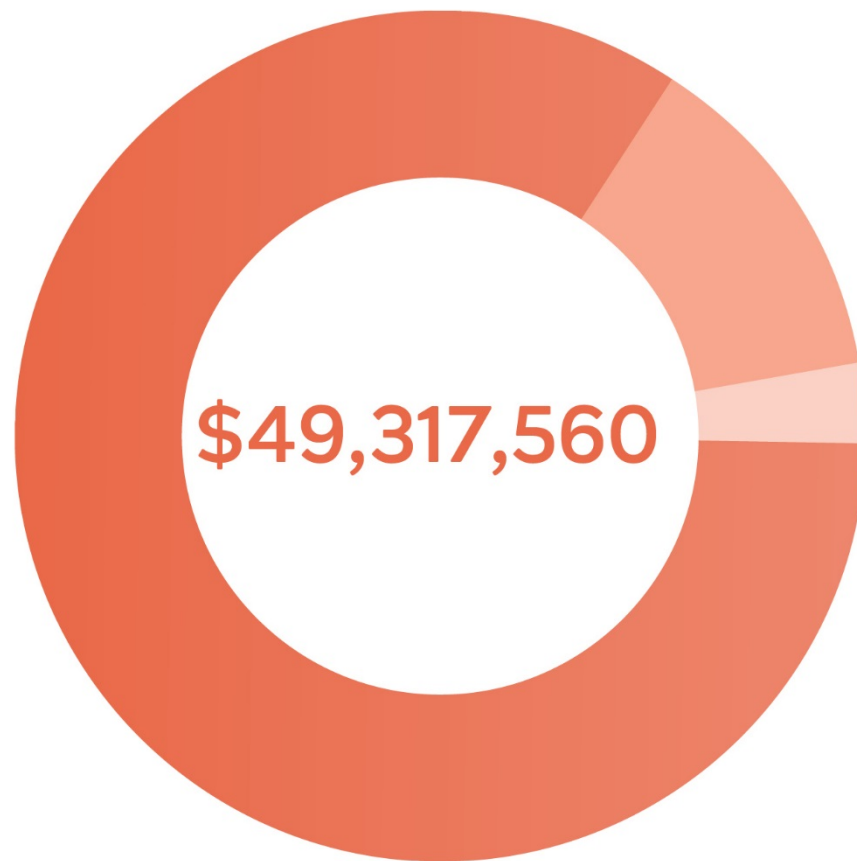


## FY 17 to FY 18 PRE-ELEMENTARY





## FY 17 HEAD START



### Head Start Funding Sources

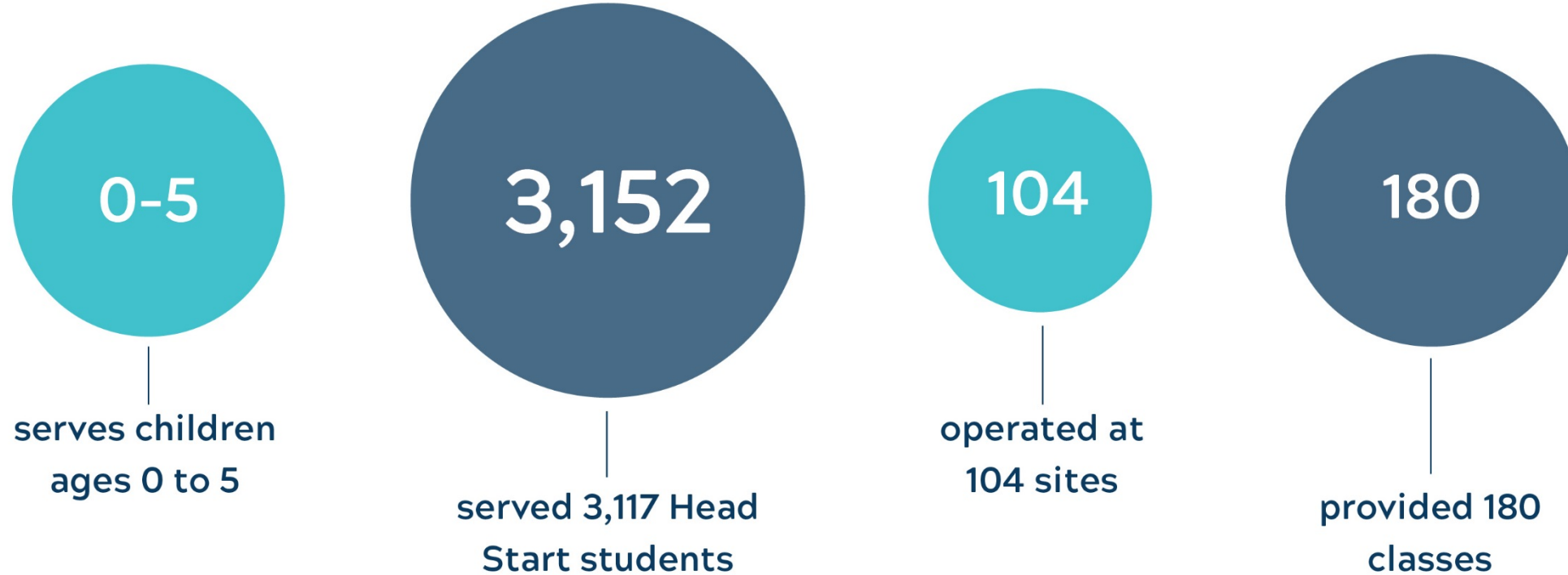
- 84% Federal\***
- 13% State**
- 3% Other** Parents as Teachers

*\*Covers 0-3, 3-5, EHS expansion, EHS Child Care Partnerships, Duration, and Training & Support.*





## FY 17 HEAD START BY THE NUMBERS







## MEASURING GROWTH

Educators in grant programs observed children in the following four developmental areas:



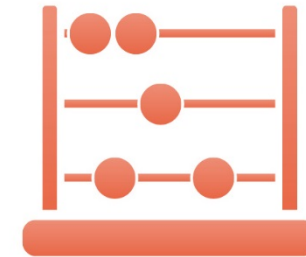
Cognitive



Language



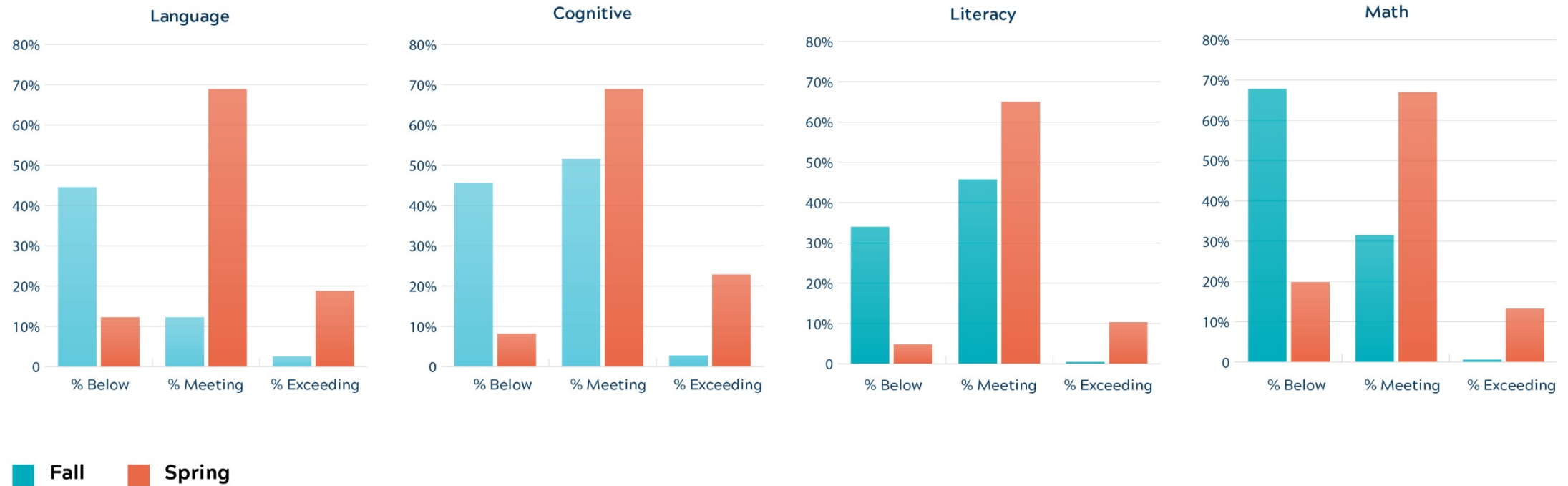
Literacy



Math



## FY 17 FINAL GROWTH DATA





## FY 17 BEST BEGINNINGS



**35%**

of Alaska children under  
age 5 are enrolled in  
Imagination Library



**231,887**

Imagination Library books  
were delivered at no cost  
to families

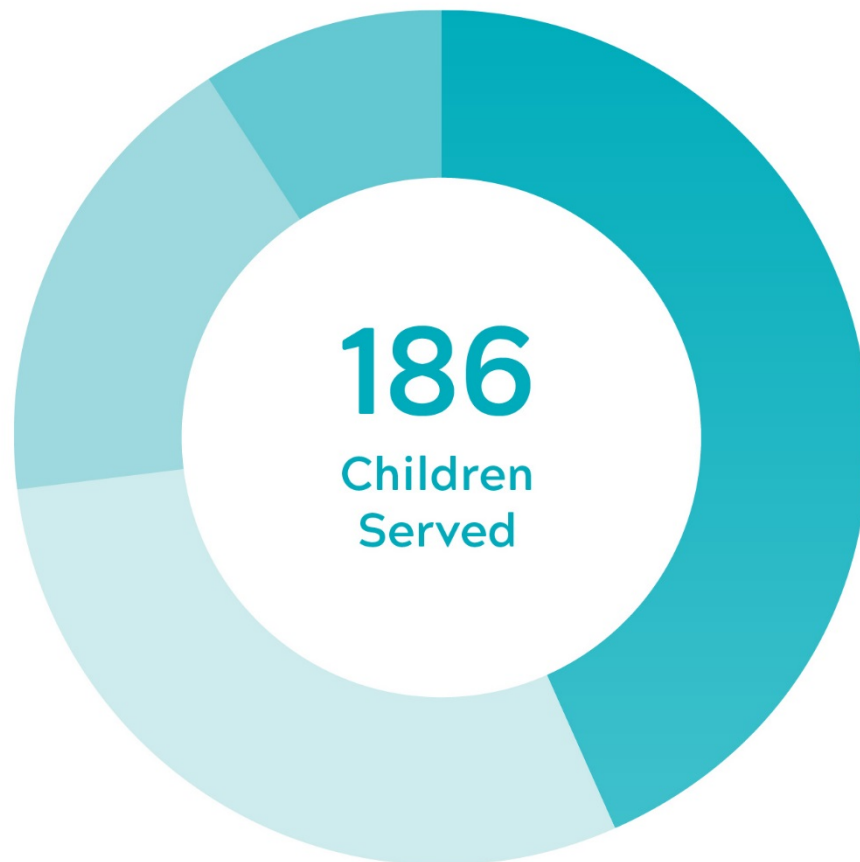


**85%**

of parents reported that  
receiving Imagination  
Library books increased the  
time they spent reading  
with their child



## FY 17 PARENTS AS TEACHERS



Number of Children Served by Parents  
as Teachers by Grantee and Region

- 81 Rural CAP** (Haines, Kake & Kodiak)
- 55 Southeast AEYC** (Juneau)
- 33 Kid's Corp** (Anchorage)
- 17 Sprout** (Homer)



## Alaska's Child Care Resource and Referral

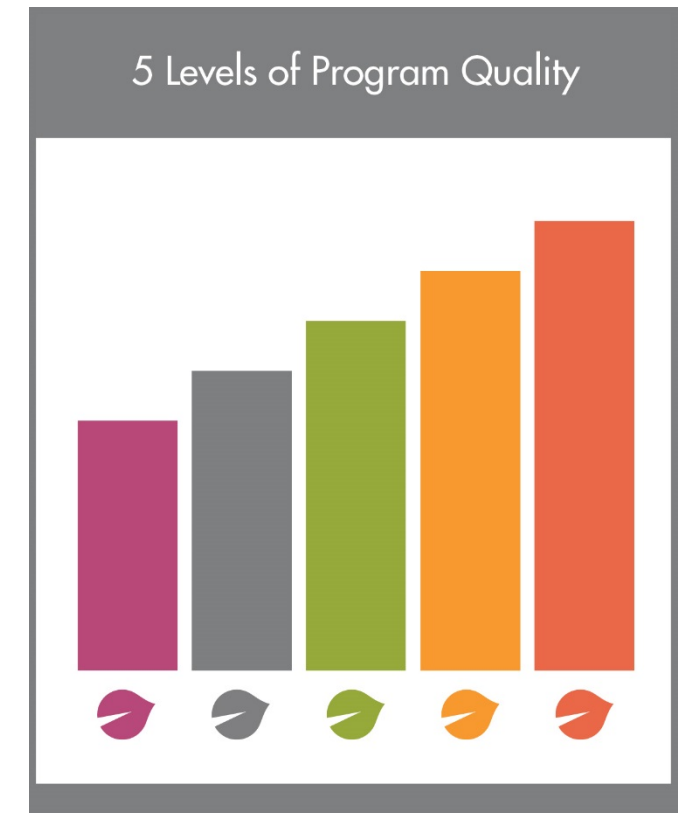
Thread provides resources and referrals for early learning throughout the state.

They have been successfully providing professional development, including coaching and training for over 30 years.

Thread is partnering with DEED to establish Learn & Grow, Alaska's Quality Recognition and Improvement System (QRIS). Learn & Grow provides a framework with quality standards and activities for all early care and learning programs to help those programs participate in continuous quality improvement.



Professional Development  
Training & Coaching Supports



Learn & Grow



**VISION**

ALASKA INDIVIDUALS, FAMILIES AND COMMUNITIES ARE SAFE AND HEALTHY

**MISSION**

TO PROMOTE AND PROTECT THE HEALTH AND WELL-BEING OF ALASKANS

Department of Education & Early Development  
Department of Health & Social Services

**JOINT PRESENTATION | HOUSE**

**March 16, 2018**

---

# Early Intervention/Infant Learning Program: Addressing Special Needs Populations

Duane Mayes | Director

Maureen Harwood | Chief of Developmental Programs





# What Services Are Required to be Provided Under IDEA Part C?

- Family Training
- Special Instruction
- Speech-language pathology and audiology services, and sign language and cued language services
- Physical Therapy
- Occupational Therapy
- Psychological Services
- Service Coordination Services
- Medical Services (only for diagnostic or evaluation purposes)



# Where and When Are Services Provided?

---

- Referrals must be responded to within **7** business days
- Initial evaluation, family assessment, and IFSP development must be completed within **45** days from the date of referral unless there are documented exceptional family circumstances.



# Comprehensive System of Personnel Development (CSPD) Required Under IDEA, Part C

- Our personnel standards for Early Intervention Service providers were created as one activity to meet our requirement under Part C of the Individuals with Disabilities Education Act to establish and maintain qualifications to ensure personnel necessary to carry out Part C Services are appropriately and adequately prepared and trained.
- Who Provides Services?
  - Early Childhood Specialist Educators
  - Speech-Language Pathologists
  - Physical Therapists
  - Social Workers
  - Occupational Therapists
  - Family Therapists
  - Vision Specialists



# How Many Providers in Alaska?

- 124 Providers + contractors at local early intervention agencies
- Nearly half of our providers hold master's degrees in fields such as Early Childhood Special Education, Speech-Language Pathology, Physical Therapy, Occupational Therapy, Communication Disorders, and Social Work.
- 5 providers hold doctorate degrees



# Part C to Part B Transition Requirements

---

Part B is the over age 3 part (section) of the Special Education law (Individuals with Disabilities Education Act — IDEA)

- Transition Plan: A transition plan must be developed at least 90 days and not more than 9 months prior to a child's 3rd birthday
- LEA Notification: Local Education Agency (LEA) must be notified that a potentially eligible for preschool special education services will be referred to the LEA
- Transition Conference: Transition conference must be convened at least 90 days and not more than 9 months prior to a child's 3rd birthday



# Results Driven Accountability

- Office of Special Education Programs (OSEP) has shifted its primary emphasis on compliance to a framework that focuses on improved results for children with disabilities while continuing to ensure States meet IDEA requirements.
- States are required to a State Systemic Improvement Plan (SSIP) as part of their State Performance Plan/Annual Performance Report (SPP/APR)



# State Systemic Improvement Plan (SSIP)

- In developing, implementing, and evaluating the SSIP, OSEP expects States to focus on innovation in the use of evidence-based practices in the delivery of services to children with disabilities, which will lead to improved results.
- States are required to identify a measurable result referred to as the State Identified Measurable Result (SIMR).
- Alaska Part C's SIMR Statement: Alaska Part C's infants and toddlers with show greater than expected growth in their social-emotional development.





# Division of Public Assistance

---

We promote self sufficiency and provide basic living expenses to Alaskans in need

Monica Windom | Director



# High Quality Early Care and Education

---

- Child Care Licensing
- Child Care Grant Program
- Alaska Inclusive Child Care Program (Alaska IN!)
- Child Care Resource and Referral



# AECCC

## Alaska Early Childhood Coordinating Council

