



Trust  

---

Land Office

# HB 155 - Alaska Mental Health Trust Land Exchange with the USFS



# The Alaska Mental Health Trust

- A perpetual trust using its resources to ensure a comprehensive integrated mental health program in Alaska.
- Funding programs that serve Alaska's most vulnerable populations for the past two decades.
- Providing programs for mental illnesses, developmental disabilities, Alzheimer's disease and related dementias, traumatic brain injuries & substance abuse disorders.

*Their Mission: to improve the lives of beneficiaries.*



Trust  
Land Office

# The Trust Land Office

Manages the Trust owned land and resources to generate revenue, used by the Trust to improve the lives of the beneficiaries.

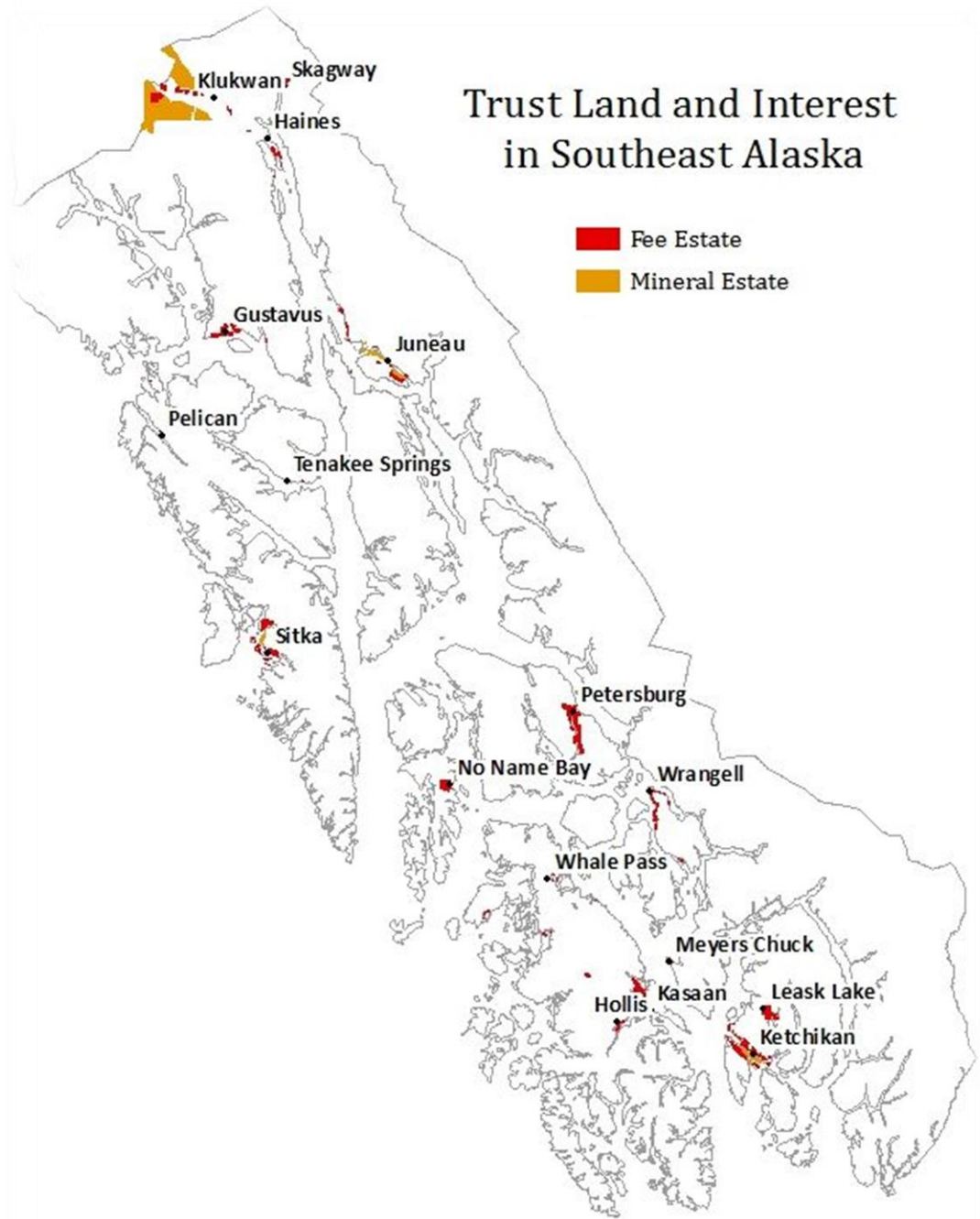
***Our Mission:*** to protect & enhance the value of Alaska Mental Health Trust lands.



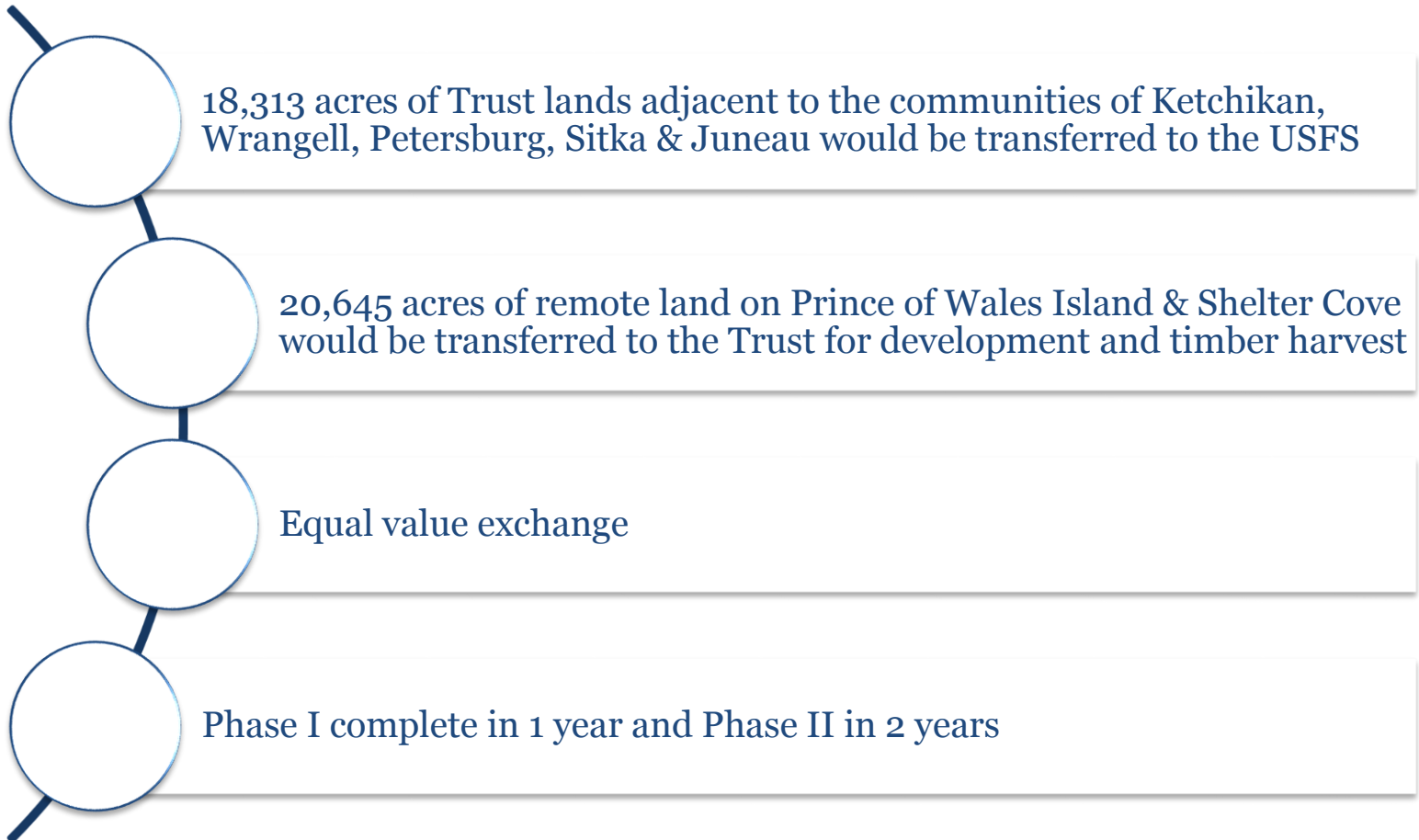
# Trust Management Principles

1. Maximize long-term revenue & productivity from trust land
2. Protect corpus
3. Encourage diverse revenue-producing uses of trust land
4. Manage trust land prudently, efficiently & with accountability to the trust and its beneficiaries

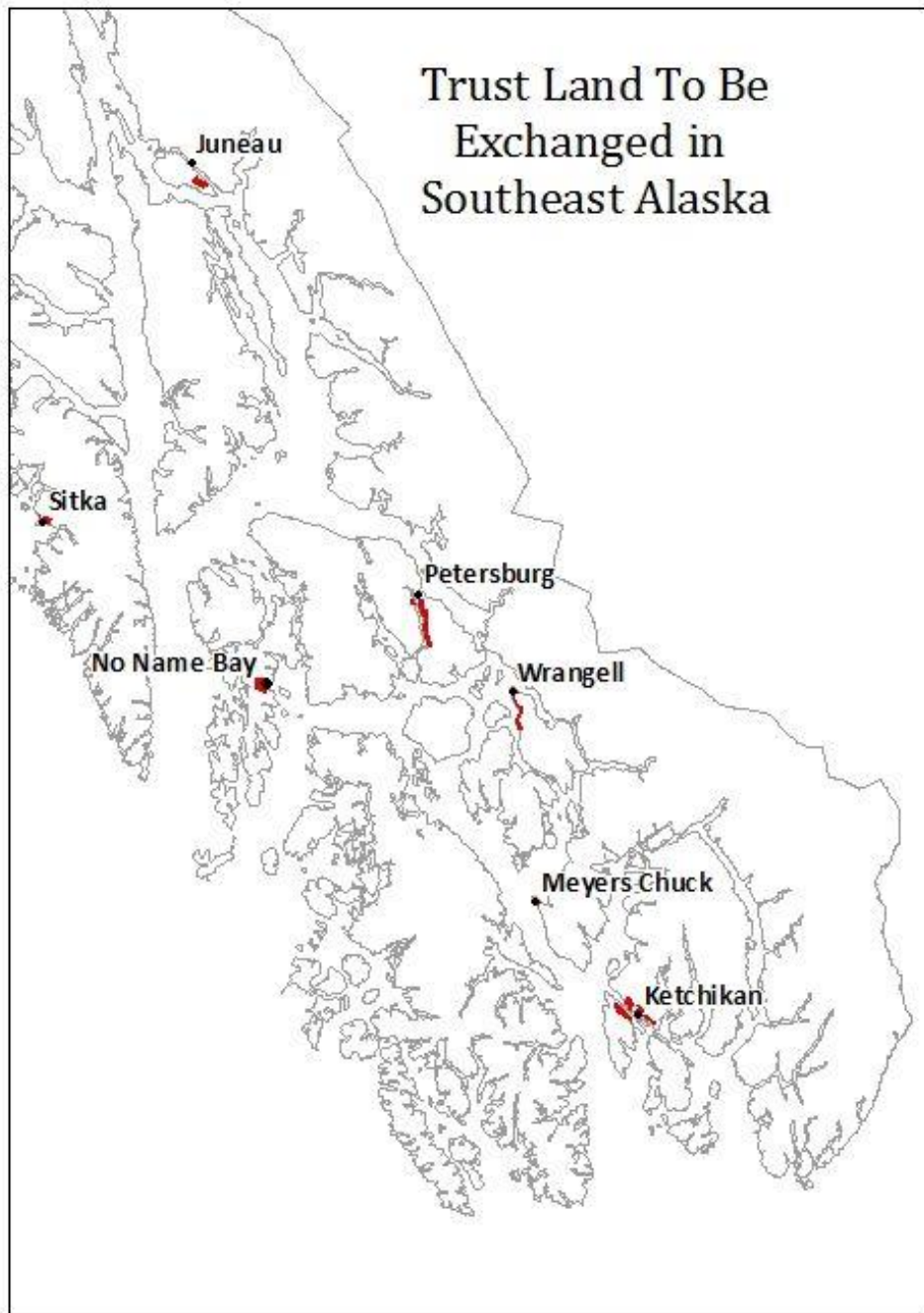
# Land Distribution



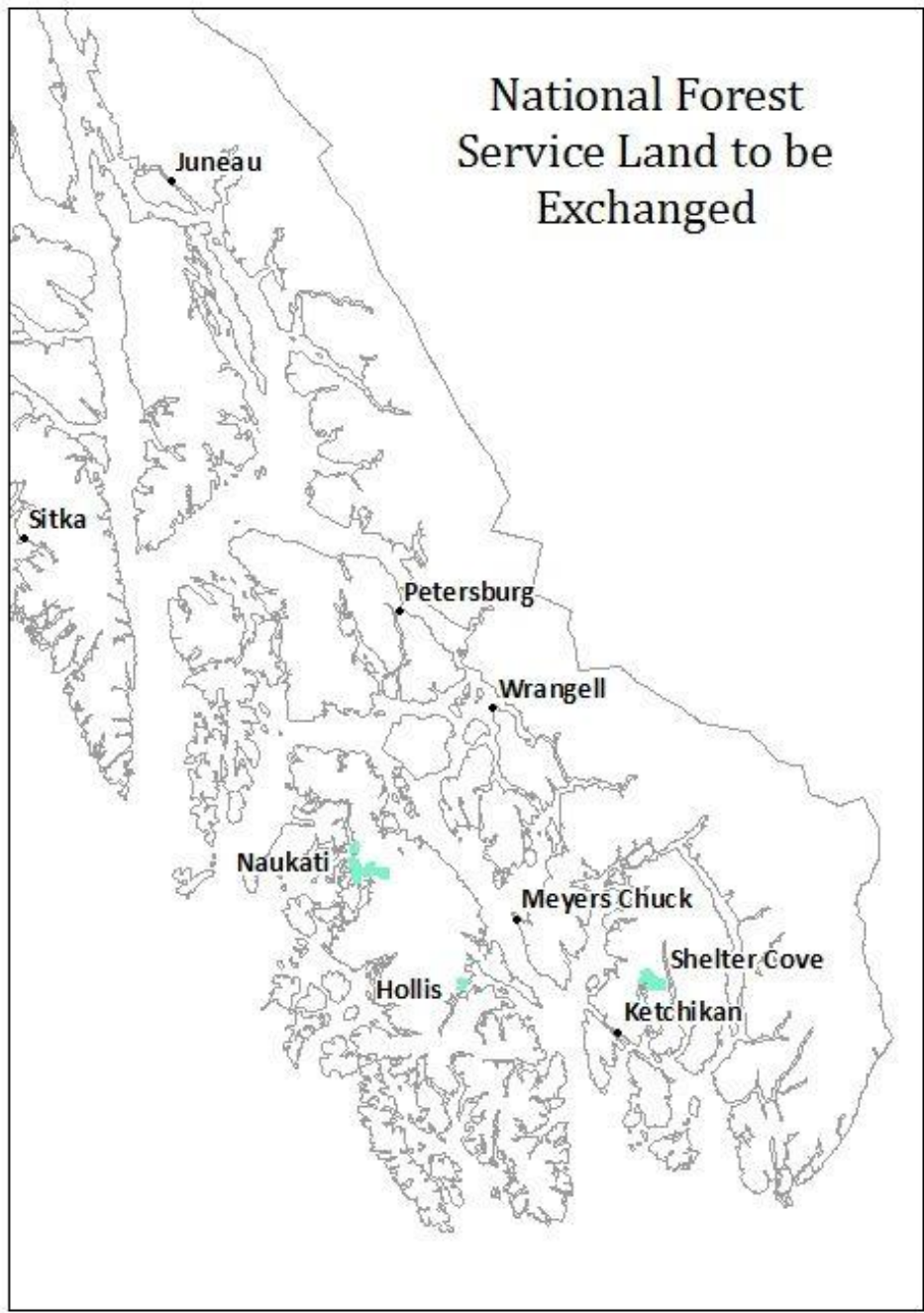
# Land Exchange Details



## Trust Land To Be Exchanged in Southeast Alaska



## National Forest Service Land to be Exchanged



# Land Exchange Benefits

Consolidates Trust land ownership

Replaces lands adjacent to communities with lands that are more conducive to revenue production such as from timber harvest

Protects timber and tourism industries

Protects jobs and economies in SE Alaska

Protects viewsheds, watersheds, and certain old growth timber stands



# Why Now?

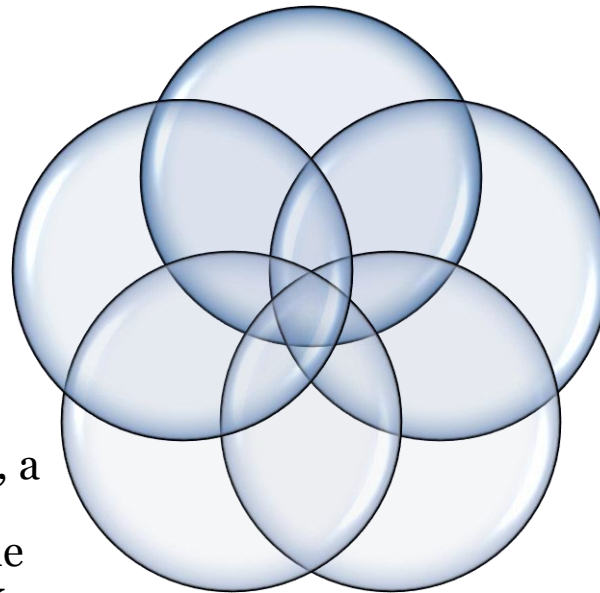
Result of 10 years of  
planning and public  
input

USFS timber  
supplies have  
dwindled

Extensive  
negotiations with  
USFS

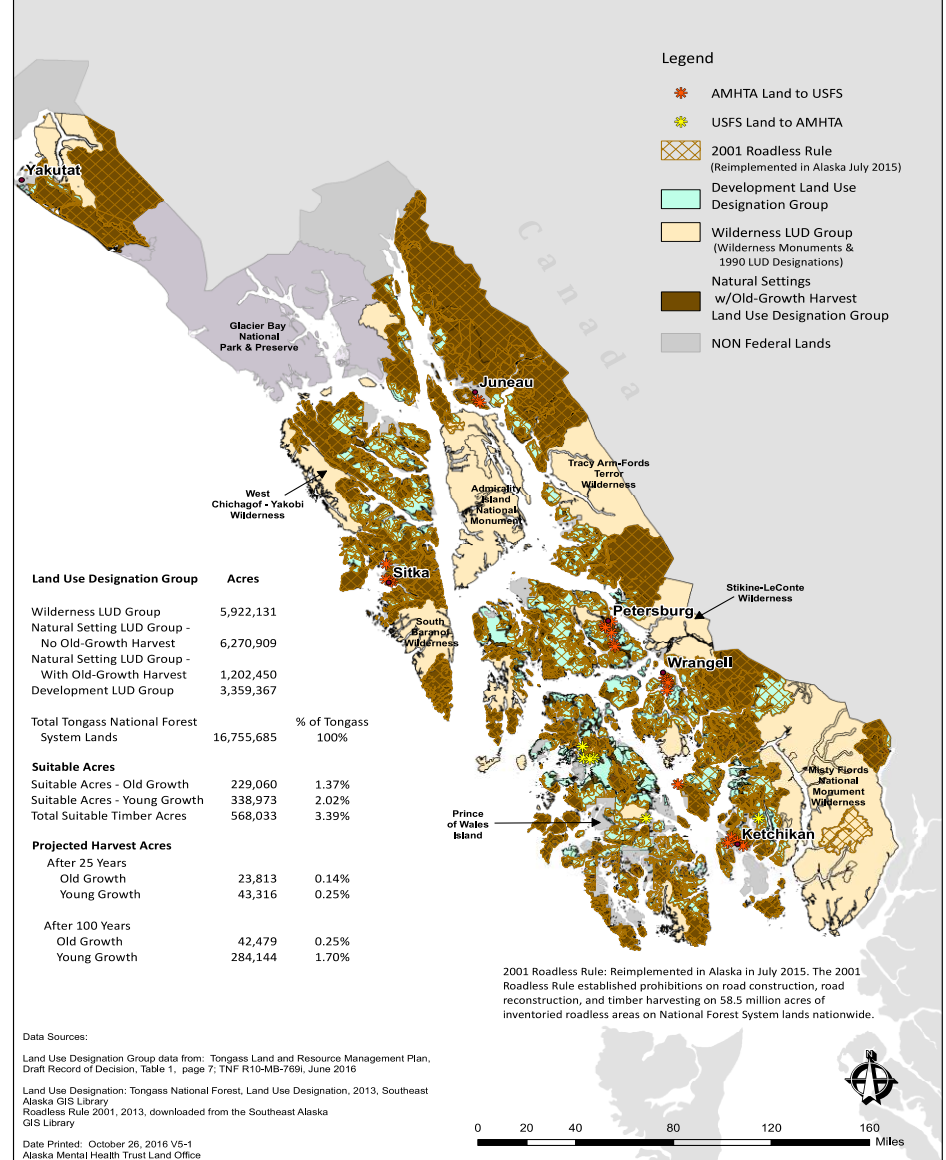
Timber industry, a  
key revenue  
generator for the  
Trust, is at risk  
because of low  
timber supply

Addressing  
concerns from  
conservation  
groups and other  
interests



# USFS Forest Plan

## Tongass National Forest Land Use Map



# Federal Legislation

- S. 131 introduced by Senator Murkowski and Sullivan in January 2017
- HR. 513 introduced by Representative Young in January 2017
- Language compatible with SB 88 and HB 155
- Directs the USFS to complete the exchange

# Thank You to Our Supporters

We are grateful to all of the organizations, leaders & individual community members who support the Trust land exchange legislation.

## Resolutions

**Southeast Conference**  
**City & Borough of Wrangell**  
**Ketchikan Gateway Borough**

## Supporters

**Dan Bockhorst** – Ketchikan Gateway Borough  
**David Landis** – Ketchikan Gateway Borough  
**Cindi Lagoudakis** – Petersburg Borough  
**Julie Decker** – City & Borough of Wrangell  
**David L. Jack** – City & Borough of Wrangell  
**Kim Lane** – City & Borough of Wrangell  
**Curtis Thayer** – Alaska State Chamber of Commerce  
**Clare Doig** – Alaska Council of Foresters  
**Owen Graham** – Alaska Forest Association  
**Senator Bert Stedman** – Alaska State Legislature  
**Representative Dan Ortiz** – Alaska State Legislature

# Thank You to Our Supporters

## Supporters

**Randy Ruaro** – Alaska State Legislature

**Jason Custer** – Alaska Power & Telephone Co. (AP&T)

**Brian Brown** – Alcan Forest Products

**Eric Nichols** – Alcan Forest Products

**Larry Norene** – Alaska Mental Health Trust

**Mary Jane Michael** – Alaska Mental Health Trust

**Russ Webb** – Alaska Mental Health Trust

**Todd Shipp** – Alta Forest Products, LLC

**Bess Clark** – Community Connections

**Liz Cornejo** – Constantine Metal Resources Ltd

**Dennis Reynvaan** – Dahlstrom Lumber Co.

**William Swift** – Greater Ketchikan Chamber of Commerce

**Graham Neale** – HDI Heatherdale Resources Ltd

**Kim Champney** – REACH Inc.

**Carl Portman** – Resource Development Council

**Shawn Richardson** – Samson Tug & Barge Co.

**Shelly Wright** – Southeast Conference

**Chelsea Goucher** – Southeast Conference

**Les Cronk** – Southeast Stevedoring Corporation

**Paul Axelson** – Southeast Stevedoring Corporation

**Randy Johnson** – Tyler Rental, Inc.

**Bryce Dahlstrom** – Viking Lumber Co., Inc.

**Kirk Dahlstrom** – Viking Lumber Co., Inc.

**James D. Balamaci** – Special Olympics

**Jerry Jenkins** – Anchorage Community Mental Health Services

**Adam Molenda** – Timber Products Manufacturers Association

**Joan O'Keefe** – Southeast Alaska Independent Living (SAIL)

**Mike Barton** – Past Chair of the Alaska Mental Health Trust

**Bob Sivertsen**

**Kristina Woolston**

**Petersburg Mental Health Services**

**National Council on Alcoholism and Drug Dependence – Juneau**