



Public Health FY2022 Overview

House Health and Social Services Finance Subcommittee

Dr. Anne Zink, Chief Medical Officer

Heidi Hedberg, Director

Britten Niemi, Administrative Operations Manager

March 16, 2021

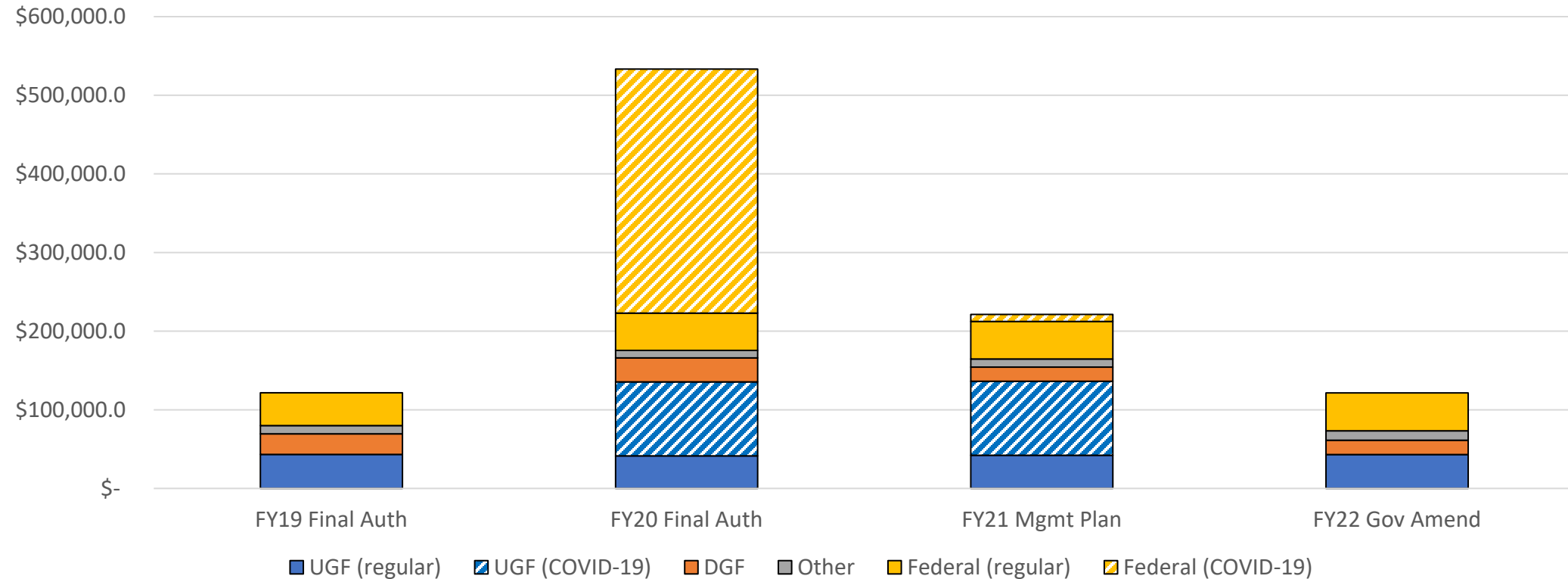


Sections Overview

- Bureau of Vital Statistics
- Chronic Disease Prevention and Health Promotion
- Emergency Programs
- Epidemiology
- Office of Substance Misuse and Addiction Prevention
- Public Health Laboratories
- Public Health Nursing
- State Medical Examiner
- Women's, Children's, and Family Health



Division of Public Health Operating Budget Comparison FY2019-FY2022 (in thousands)



	FY19 Final Auth	FY20 Final Auth	FY21 Mgmt Plan	FY22 Gov Amend	Difference FY19 and FY22	% Difference FY19 and FY22	Difference FY21 and FY22
UGF (regular)	\$ 43,304.3	\$ 41,404.3	\$ 42,196.4	\$ 43,168.9	\$ (135.4)	-0.3%	\$ 972.5
UGF (COVID-19)		\$ 94,091.1	\$ 94,056.7				\$ (94,056.7)
DGF	\$ 26,259.8	\$ 30,492.9	\$ 18,023.6	\$ 18,171.4	\$ (8,088.4)	-30.8%	\$ 147.8
Other	\$ 10,378.6	\$ 9,526.3	\$ 10,323.7	\$ 11,969.7	\$ 1,591.1	15.3%	\$ 1,646.0
Federal (regular)	\$ 41,678.5	\$ 47,565.8	\$ 47,762.0	\$ 48,272.9	\$ 6,594.4	15.8%	\$ 510.9
Federal (COVID-19)		\$ 310,121.3	\$ 9,000.0				\$ (9,000.0)
Total	\$ 121,621.2	\$ 533,201.7	\$ 221,362.4	\$ 121,582.9	\$ (38.3)	0.0%	\$ (99,779.5)

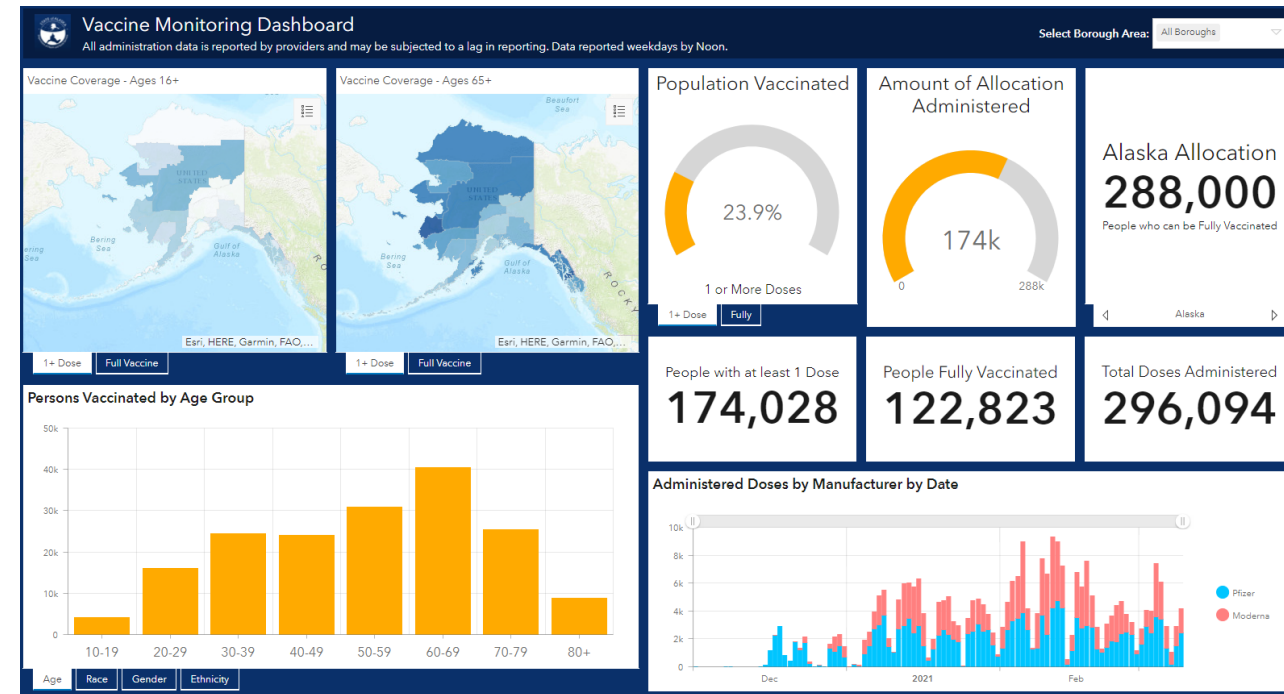


Division of Public Health Operating Budget Changes FY2021-FY2022 (in thousands)

- Carryforward language of authority for COVID-19 response for FY2022
- Increment for nurse salary study affecting multiple components: \$1,603.4 total -- \$1,014.3 UGF, \$11.3 DGF, \$576.4 federal, \$1.4 other
- Fiscal note for SB93 medical provider incentives, SHARP-3, in Emergency Programs: \$593.6 SDPR
- Increment for AIDS drug assistance program in Epidemiology: \$895.0 SDPR
- Transfer Chief Medical Officer/Director (06-1868) to Commissioner's Office: (\$395.3) total – (\$166.0) GF Match, (\$229.3) federal

Bureau of Vital Statistics

- Registered
 - 9,530 Alaska resident births
 - 4,684 resident deaths
 - 4,376 marriages
 - 2,492 legal separations
 - Completed 3,252 paternities and 665 adoptions
 - Issued 73,264 certificates to 47,818 individual customers
 - Of the total certificates issued, 3,109 (4.2%) were issued to families of veterans free of charge
- Launched COVID-19 data dashboards for cases, testing, hospitalizations, epidemiological curve, and vaccine monitoring
- Provide analytical reports based off data collected



Chronic Disease Prevention and Health Promotion

- COVID-19 shows Alaskans with underlying health conditions are at higher risk. Two out of three Alaskan adults have an underlying chronic health concern that increases their chances of serious illness or death should they contract COVID-19
- Evergreen Economics, Long-Term Forecast of Medicaid Enrollment and Spending in Alaska (MESA Report). Reducing preventable chronic disease reduces Medicaid costs.
- Established Plan Safer Events consultation services to support organizers of events, gatherings, and sporting events during COVID-19
- Launched new data dashboard to provide easy access to important information about the health risks of Alaska youth

Emergency Programs

- Supported successful repatriation flight of US citizens from Wuhan, China in January 2020
- Launched hospital capacity dashboard to reduce patient transfer times
- 223 nurses signed up with AK Respond
- Assisted in addressing 2,690 COVID-19 resource requests to Unified Command
- EMS support at vaccination clinics

Personal Protective Equipment	Quantity Shipped
N-95 Masks, Surgical Masks, Cloth Masks	1,074,793
Gowns	144,056
Face Shields	55,536
Bleach Wipe and Hand Sanitizer Containers	3,926
Gloves, Boxes	25,402
Shoe Covers	32,374
Coveralls, Tyvek Suits	5,886
PAPR's	1,094

Testing Supplies	Quantity Shipped*
Swabs	465,206
Tubes	30,700
Transport Media	414,630
Transport/ Swab Kits	133,620
Cue Tests	307,700
ID Now	4,438,248
BinaxNow	12,133,600
Cepheid	960,600
Curative	20,010
Specimen Collection Bags	125,231

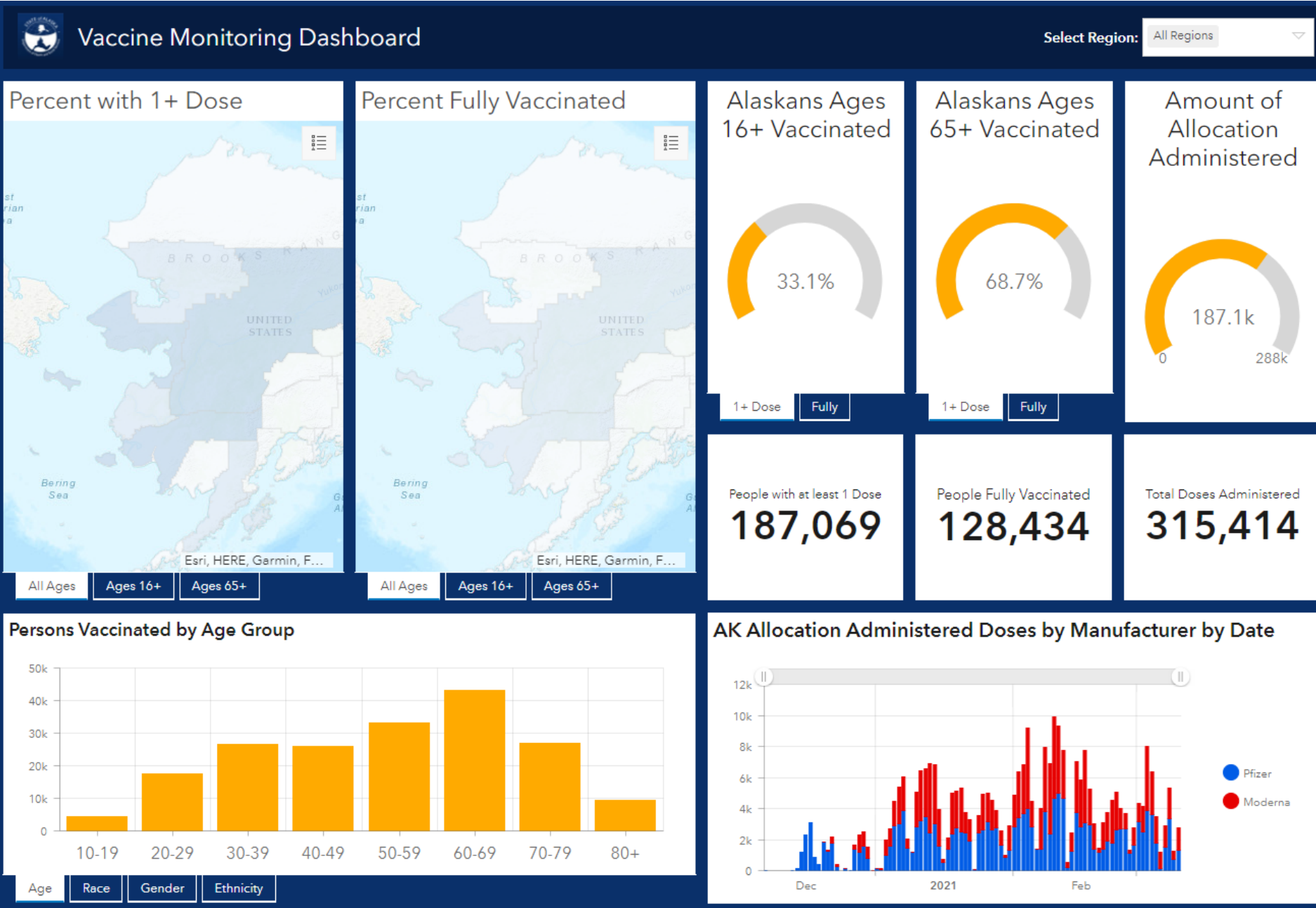
*Individual Unit Count

Medical Supplies	Quantity Shipped
Ventilators and Circuit Kits	67
Oxygen Concentrators	18



Epidemiology

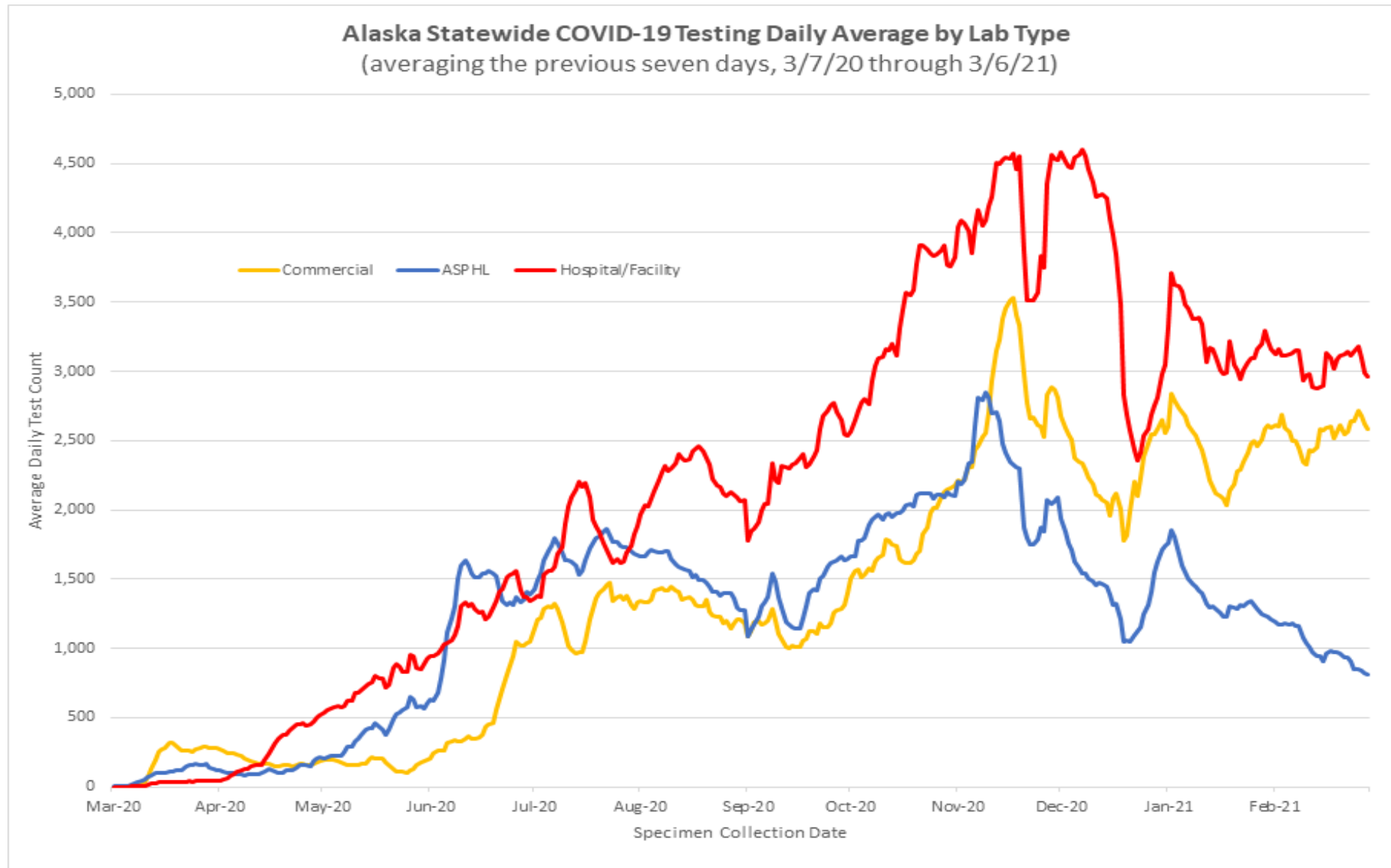
- Ongoing infectious disease outbreak response
 - COVID-19
 - Tuberculosis
 - Syphilis
- Provide expertise and guidance to
 - Health care providers and facilities, communities, schools, childcare providers, critical infrastructure partners, camps, faith-based groups, large events and sports organizers, and other partners on COVID-19 mitigation strategies
- Provide Epi Bulletins, health e-alerts, clinical updates, provider grand rounds
- Coordinating the distribution of COVID-19 vaccine



Public Health Laboratories

- Alaska was the only state without a commercial lab to support COVID-19 testing until October 2020
- Expanded testing capacity at the State Public Health Laboratories from 300 to over 2,900 samples/day during the COVID-19 response
- Established a sequencing program that has sequenced approximately 5% of all positive cases. Within the last month 85-90% of all positive specimens received by ASPHL have been sequenced.
 - Partnership with the UAF and UAA to support sequencing
 - Weekly genomic surveillance report
- Alaska has the highest rate of sequencing positive COVID-19 specimens

Public Health Laboratories



Public Health Nursing

- Expanded case investigation and contact tracing
 - Partnered with UAA to develop Alaska specific training system
 - Partnered with Anchorage Health Department, North Slope Borough, Maniilaq Association, ANTHC Epi Center, CDC Arctic Investigations Program, YKHC, UAA, school districts, Alaska Primary Care Association, and others to build workforce
- Supporting communities on COVID-19 vaccine clinics
- Public Health Nursing staff the call center
- Federal funding supports non-perm staff surge expansion



Questions?

